

Rec'd 09/28/2020 - NMOCD

**Caza Petroleum, Inc.**  
**Sioux 35-24 State Fed Com 8H**  
**Rig: Citadel 2**



**Production**  
**T-24462**  
**County: Lea**  
**Supervisor: Cody Reeves**

Cementing Job Log						
Date	Time	Description	Rate (BPM)	Volume (BBL)	Pressure (PSI)	Details of Operation and Procedure
05/13/2020	10:00	Called Out				HARD TIME WAS 16:00
05/13/2020	11:30	Load Up For Job				LOADED EVERYTHING FOR THE JOB
05/13/2020	13:30	Conduct Meetings				JOURNEY MANAGEMENT
05/13/2020	14:00	Depart For Job				
05/13/2020	16:00	On Location Time				
05/13/2020	16:00	Arrived on Location				
05/13/2020	16:05	Rigs Progress at Arrival				RIG WAS RUNNING CASING
05/13/2020	16:30	Conduct Meetings				JSA FOR RIGGING UP AND SPOTTING TRUCKS
05/13/2020	16:45	Discuss Job With Customer				FOUND OUT THEY HAD A TD OF 22,150 FT AND 22,136 FT OF 6 INCH 24.5# CASING AND HAVE A 7 FT SHOE JOINT AND A 8 3/4 OPEN HOLE WITH A PREVIOUS CASING OF 9 5/8 40# CASING SET @ 9130 FT AND 10.9# OBM AND WE ARE RUNNING THEIR PLUG AND DIPLACING WITH FRESH WATER
05/13/2020	18:30	Casing On Bottom				
05/13/2020	18:45	Equipment Arrives to Location				LAST BULK TRUCK ARRIVED ON LOCATION
05/13/2020	18:50	Install Cement Head				STABBED HEAD SO RIG COULD BURST DISC AND CIRCULATE AIR OUT
05/13/2020	19:15	Rig Circulate Hole				RIG BURST DISC
05/13/2020	20:30	Rig Circulate Hole				RIG STARTED CIRCULATING BOTTOMS UP @ 6 BBL A MINUTE 965 PSI
05/13/2020	22:30	Conduct Meetings				SAFETY MEETING
05/13/2020	23:23	Fill Lines				3 BBLS AHEAD
05/13/2020	23:25	Pressure Test			10000	TESTED LINES
05/13/2020	23:38	Start Spacer	5	0	700	HOLE SCRUB SPACER @ 11.5 PPG VERIFIED BY MUD SCALES
05/13/2020	23:55	Spacer Complete				HOLE SCRUB SPACER @ 11.5 PPG
05/13/2020	23:56	Start Cement	5.7	0	1070	LEAD CEMENT @ 11.5 PPG 1125 SACKS VERIFIED BY MUD SCALES
05/14/2020	01:19	Cement Complete	5.7	447	800	LEAD CEMENT @ 11.5 PPG
05/14/2020	01:20	Start Cement	6	0	800	TAIL CEMENT @ 14.2 PPG 2940 SACKS VERIFIED BY MUD SCALES
05/14/2020	03:09	Cement Complete	6	618	700	TAIL CEMENT @ 14.2 PPG
05/14/2020	03:20	Shut Down				
05/14/2020	03:24	Wash Out Pumps & Lines				
05/14/2020	03:30	Release Plug				
05/14/2020	03:35	Start Displacement	6	0	250	FRESH WATER WITH CPT-21L
05/14/2020	03:38	Switch Displacement Fluid	6	20	250	FRESH WATER WITH KCL
05/14/2020	04:41	Other	6	400	3250	GOT CEMENT BACK AT 400 BBLS GONE WHICH GAVE US 182 BBLS BACK WHICH IS 458 SACKS
05/14/2020	05:00	Caught Cement	6	125	550	CAUGHT LIFT PRESSURE WENT FROM 250-550 PSI

05/14/2020	05:00	Decrease Rate	4	525	3300	SLOWED TO 4 BBL A MINUTE FINAL PRESSURE 3300 PSI
05/14/2020	05:13	Bump Plug	3	582	3800	LANDED PLUG PRESSURE WENT FROM 3300-3800 PSI
05/14/2020	05:18	Check Floats				CHECKED FLOATS THEY HELD AND WE GOT BACK 8.5 BBLs BACK
05/14/2020	05:30	Conduct Meetings				JSA FOR RIGGING DOWN
05/14/2020	07:30	Other				DEPART FOR THE YARD

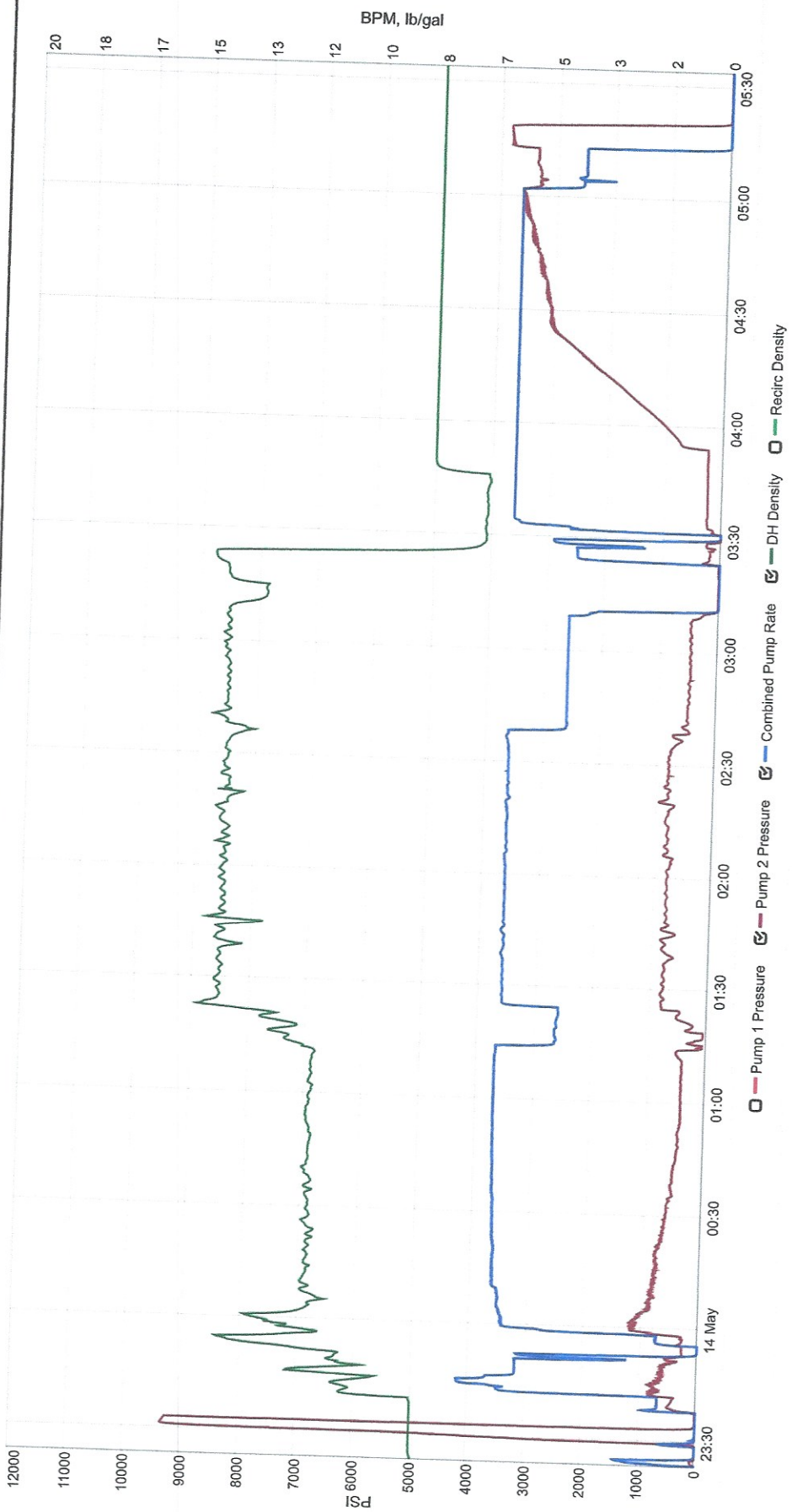
Cement Heights and Tops			
Slurry Type	Cement Height	Cement Top	
Spacer		0	
Lead CMT	5218	0	
Tail CMT	16918	5218	
Crew Members			
Field Supervisor	Cody Reeves		
Field Supervisor	Bryce Townsend		
Bulk Hand	Sergio Flores		
	Raul Rangel		
	ILIAN SABORI		
Casing Information			
	Previous Casing	Hole & Casing Info	
Hole Size 1		8.5	
MD:		22150	
TVD:		12147	
Casing Size	9.625	6.000	
Casing Length	9130	22,136	
Casing Weight	40.00	24.50	
Casing ID		5.195	
DV Tool			
Shoe Joint		7	
Burst Pressure	10264		
Cement Returns	182		
Mud Info		Water Info	
Type	OBM	PH	7
Weight	10.9	Chlrd	278
		Temp	70

Spacer					
	PPG		YLD		H2O
			1	lb/bbl	GXT Spacer
			0.2	gal/bbl	CPT-41L
			5	lb/bbl	CPT-503P
			2	lb/bbl	Citric Acid
			175	lb/bbl	Barite
			5	lb/bbl	HoleScrub
Lead CMT					
11.5	PPG	2.23	YLD	11.93	H2O
			1125	Sacks	50/50 Poz H
			5	bwow	Sodium Chloride (Salt)
			7	%	Bentonite Gel
			0.5	%	CPT-19
			0.8	%	CPT-45
			0.4	%	CPT-503P
			0.25	lbs/sk	Cellophane Flakes
			3	lbs/sk	Kol Seal
			0.2	%	CPT-20A
			0.2	%	Citric Acid
Tail CMT					
14.2	PPG	1.18	YLD	4.86	H2O
			2940	Sacks	35/65 Poz H
			2	%	Bentonite Gel
			0.5	%	CPT-30
			0.1	%	D-3
			0.3	%	CPT-45
			0.4	%	CPT-23



CAZA

T-24462



Events

Date	Flag	Total	Description
------	------	-------	-------------