

DISTRICT I  
1625 N. FRENCH DR., HOBBBS, NM 88240  
Phone: (575) 393-6161 Fax: (575) 393-0720

DISTRICT II  
811 S. FIRST ST., ARTESIA, NM 88210  
Phone: (575) 748-1283 Fax: (575) 748-8720

DISTRICT III  
1000 RIO BRAZOS RD., AZTEC, NM 87410  
Phone: (505) 334-6178 Fax: (505) 334-6170

DISTRICT IV  
1220 S. ST. FRANCIS DR., SANTA FE, NM 87505  
Phone: (505) 476-3460 Fax: (505) 476-3462

State of New Mexico  
Energy, Minerals & Natural Resources Department  
**OIL CONSERVATION DIVISION**  
1220 SOUTH ST. FRANCIS DR.  
Santa Fe, New Mexico 87505

Form C-102  
Revised August 1, 2011  
Submit one copy to appropriate  
District Office

Rec'd 8/26/2020 - NMOCD

☐ AMENDED REPORT

**WELL LOCATION AND ACREAGE DEDICATION PLAT**

API Number <b>30-025-45640</b>	Pool Code <b>98138</b>	Pool Name <b>WC-025 G-09 S243310P; Upper Wolfcamp</b> <i>KZ</i>
Property Code	Property Name <b>BELL LAKE 19-18 STATE COM</b>	Well Number <b>32H</b>
OGRID No. <b>6137</b>	Operator Name <b>DEVON ENERGY PRODUCTION COMPANY, L.P.</b>	Elevation <b>3540.5'</b>

**Surface Location**

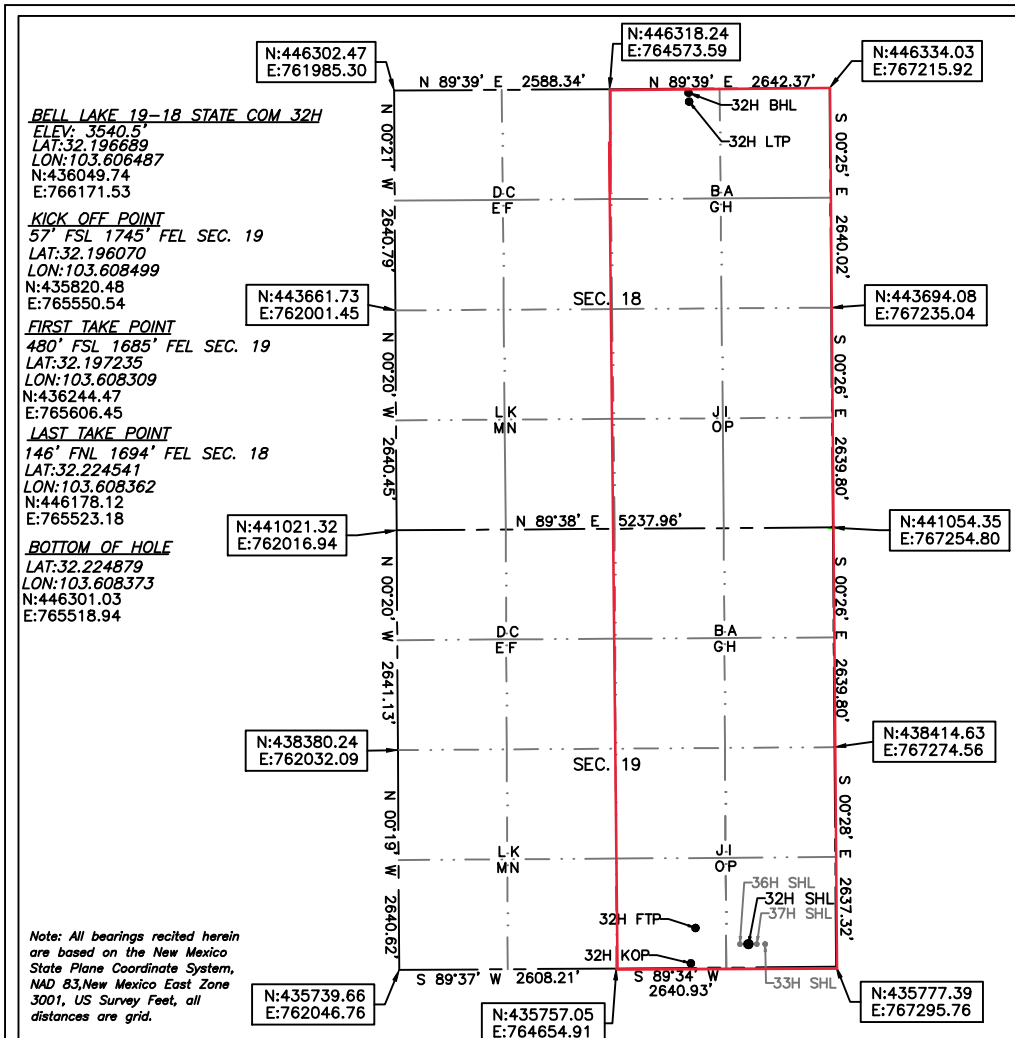
UL or lot No.	Section	Township	Range	Lot Idn	Feet from the	North/South line	Feet from the	East/West line	County
P	19	24-S	33-E		281	SOUTH	1122	EAST	LEA

**Bottom Hole Location If Different From Surface**

UL or lot No.	Section	Township	Range	Lot Idn	Feet from the	North/South line	Feet from the	East/West line	County
B	18	24-S	33-E		23	NORTH	1697	EAST	LEA

Dedicated Acres <b>640</b>	Joint or Infill	Consolidation Code	Order No.
-------------------------------	-----------------	--------------------	-----------

**NO ALLOWABLE WILL BE ASSIGNED TO THIS COMPLETION UNTIL ALL INTERESTS HAVE BEEN CONSOLIDATED  
OR A NON-STANDARD UNIT HAS BEEN APPROVED BY THE DIVISION**



**OPERATOR CERTIFICATION**

I hereby certify that the information herein is true and complete to the best of my knowledge and belief, and that this organization either owns a working interest or unleased mineral interest in the land including the proposed bottom hole location or has a right to drill this well at this location pursuant to a contract with an owner of such mineral or working interest, or to a voluntary pooling agreement or a compulsory pooling order heretofore entered by the division.

*Rebecca Deal* 8/14/2020  
Signature Date

Rebecca Deal, Regulatory Analyst  
Printed Name

rebecca.deal@dvn.com  
E-mail Address

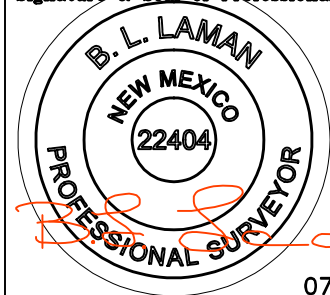
**SURVEYOR CERTIFICATION**

I hereby certify that the well location shown on this plat was plotted from field notes of actual surveys made by me or under my supervision, and that the same is true and correct to the best of my belief.

7/2020

Date of Survey

Signature & Seal of Professional Surveyor



07/14/20

Certificate No. 22404 B.L. LAMAN  
DRAWN BY: CM

Intent ☐ As Drilled ☒

Rec'd 8/26/2020 - NMOCD

API #  
30-025-45640

Operator Name: DEVON ENERGY PRODUCTION COMPANY, LP.	Property Name: BELL LAKE 19-18 STATE COM	Well Number 32H
---	---	--------------------

Kick Off Point (KOP)

UL N	Section 19	Township 24-S	Range 33-E	Lot	Feet 57	From N/S SOUTH	Feet 1745	From E/W EAST	County LEA
Latitude 32.196070					Longitude 103.608499				NAD 83

First Take Point (FTP)

UL N	Section 19	Township 24-S	Range 33-E	Lot	Feet 480	From N/S SOUTH	Feet 1685	From E/W EAST	County LEA
Latitude 32.197235					Longitude 103.608309				NAD 83

Last Take Point (LTP)

UL C	Section 18	Township 24-S	Range 33-E	Lot	Feet 146	From N/S NORTH	Feet 1694	From E/W WEST	County LEA
Latitude 32.2245541					Longitude 103.608362				NAD 83

Is this well the defining well for the Horizontal Spacing Unit? ☐

Is this well an infill well? ☐

If infill is yes please provide API if available, Operator Name and well number for Defining well for Horizontal Spacing Unit.

API #

Operator Name: DEVON ENERGY PRODUCTION COMPANY, LP.	Property Name: BELL LAKE 19-18 STATE COM	Well Number 37H
---	---	--------------------

KZ 06/29/2018



## Final MWD Survey Certification

Lea, New Mexico

Client: Devon Energy

Well Name: Bell Lake 19-18 State Com 32H

Total Job No: 2019-686-135

API No: 30-025-45640

Start Date: 9/29/2019

End Date: 11/22/2019

Measured Start Depth: 0'

Measured End Depth: 22790'

Vertical Section from well center at PTB: 10255.90

I, Shaun Heck, certify that; I am employed by Total Directional Services, LLC and we conducted or supervised the taking of these open hole MWD surveys at the request of this client. This data is true, correct, complete and within the limitations of the tool as set forth by Total Directional Services, LLC. I am authorized and qualified to make this report and have reviewed this report and find that it conforms to the principals and procedures as set forth by Total Directional Services, LLC.

Date: 11/22/2019

Signed: *Shaun Heck*



# Bell Lake 19-18 State Com 32H

## Directional Survey Report

Start date: 9/29/2019  
End date: 11/22/2019

**Company Name:** Devon Energy  
**Well Name:** Bell Lake 19-18 State Com 32H  
**Field:** Delaware Basin  
**Rig ID:** Cactus 135  
**API/UWI:** 30-025-45640

**State/Prov:** New Mexico  
**County:** Lea  
**Country:** USA  
**Location:** Lea County  
**Latitude/Longitude:** 32.196689 / -103.606390

**Survey Company:** Total Directional  
**Job Number:** 2019-686-135  
**Proposed Azimuth:** 359.57  
**Declination:** 6.34    **KB:** 3570.5  
**North Reference:** Grid

Svy	Depth	Inc	Azm	TVD	NS	EW	VS	CD	CA	DLS	CL
TieIn	0.00	0.00	0.00	0.00	0.00	0.00	0.00	0.00	90.00	0.00	
1	199.00	0.30	336.60	199.00	0.48	-0.21	0.48	0.52	336.60	0.15	199.00
2	307.00	0.30	336.30	307.00	1.00	-0.43	1.00	1.09	336.52	0.00	108.00
3	402.00	0.50	321.90	402.00	1.55	-0.79	1.56	1.74	333.04	0.23	95.00
4	498.00	0.40	340.90	497.99	2.20	-1.16	2.21	2.48	332.23	0.19	96.00
5	593.00	0.50	337.30	592.99	2.89	-1.43	2.90	3.22	333.77	0.11	95.00
6	688.00	0.70	330.00	687.98	3.78	-1.88	3.79	4.22	333.60	0.22	95.00
7	784.00	1.00	344.70	783.97	5.09	-2.39	5.11	5.63	334.87	0.38	96.00
8	879.00	1.20	342.80	878.96	6.84	-2.90	6.86	7.43	337.02	0.21	95.00
9	975.00	1.40	342.40	974.93	8.92	-3.55	8.95	9.60	338.28	0.21	96.00
10	1,070.00	1.80	344.90	1,069.89	11.47	-4.29	11.50	12.25	339.47	0.43	95.00
11	1,175.00	1.90	351.40	1,174.84	14.78	-4.98	14.82	15.60	341.37	0.22	105.00
12	1,322.00	1.50	357.80	1,321.77	19.11	-5.42	19.15	19.87	344.16	0.30	147.00
13	1,385.00	1.00	313.20	1,384.76	20.31	-5.85	20.36	21.14	343.92	1.68	63.00
14	1,481.00	1.50	290.70	1,480.74	21.33	-7.64	21.39	22.66	340.29	0.72	96.00
15	1,576.00	2.40	277.30	1,575.68	22.02	-10.78	22.10	24.52	333.93	1.06	95.00
16	1,671.00	3.40	270.30	1,670.56	22.29	-15.57	22.41	27.19	325.07	1.11	95.00
17	1,766.00	4.50	261.10	1,765.33	21.73	-22.07	21.89	30.97	314.56	1.33	95.00
18	1,862.00	4.60	254.20	1,861.03	20.10	-29.49	20.32	35.69	304.27	0.58	96.00
19	1,957.00	7.50	236.20	1,955.50	15.61	-38.31	15.90	41.37	292.17	3.61	95.00
20	2,053.00	8.40	252.20	2,050.59	9.98	-50.20	10.36	51.18	281.25	2.48	96.00
21	2,148.00	8.30	249.20	2,144.58	5.42	-63.21	5.90	63.44	274.91	0.47	95.00
22	2,244.00	8.50	250.00	2,239.55	0.54	-76.36	1.11	76.36	270.40	0.24	96.00
23	2,339.00	8.60	249.30	2,333.50	-4.37	-89.60	-3.70	89.71	267.21	0.15	95.00
24	2,434.00	8.40	246.10	2,427.45	-9.70	-102.59	-8.93	103.04	264.60	0.54	95.00
25	2,530.00	8.50	251.80	2,522.41	-14.75	-115.74	-13.88	116.67	262.74	0.88	96.00
26	2,625.00	8.40	252.40	2,616.38	-19.04	-129.02	-18.08	130.42	261.60	0.14	95.00
27	2,721.00	8.40	253.60	2,711.35	-23.14	-142.43	-22.07	144.30	260.77	0.18	96.00
28	2,816.00	8.80	248.70	2,805.29	-27.74	-155.86	-26.57	158.31	259.91	0.88	95.00
29	2,911.00	9.00	247.70	2,899.14	-33.20	-169.51	-31.93	172.73	258.92	0.27	95.00
30	3,007.00	7.60	247.00	2,994.13	-38.53	-182.30	-37.16	186.32	258.06	1.46	96.00
31	3,102.00	8.10	247.90	3,088.24	-43.51	-194.28	-42.05	199.09	257.38	0.54	95.00
32	3,198.00	8.40	249.30	3,183.25	-48.53	-207.11	-46.97	212.72	256.81	0.38	96.00
33	3,293.00	8.40	251.50	3,277.23	-53.18	-220.18	-51.53	226.51	256.42	0.34	95.00

Svy	Depth	Inc	Azm	TVD	NS	EW	VS	CD	CA	DLS	CL
34	3,388.00	8.60	254.50	3,371.19	-57.28	-233.60	-55.53	240.52	256.22	0.51	95.00
35	3,483.00	7.30	251.50	3,465.27	-61.10	-246.17	-59.25	253.84	256.06	1.44	95.00
36	3,579.00	6.60	247.20	3,560.57	-65.17	-257.04	-63.24	265.17	255.77	0.91	96.00
37	3,674.00	5.80	243.30	3,655.01	-69.44	-266.36	-67.44	275.27	255.39	0.95	95.00
38	3,769.00	5.30	242.90	3,749.57	-73.60	-274.56	-71.53	284.25	254.99	0.53	95.00
39	3,864.00	5.30	242.90	3,844.16	-77.59	-282.37	-75.47	292.84	254.63	0.00	95.00
40	3,960.00	5.20	240.90	3,939.76	-81.73	-290.12	-79.55	301.41	254.27	0.22	96.00
41	4,055.00	5.10	240.20	4,034.37	-85.92	-297.54	-83.69	309.70	253.89	0.12	95.00
42	4,150.00	5.00	238.80	4,129.00	-90.17	-304.75	-87.88	317.81	253.52	0.17	95.00
43	4,245.00	6.50	238.30	4,223.52	-95.14	-312.86	-92.79	327.01	253.09	1.58	95.00
44	4,340.00	7.10	242.90	4,317.86	-100.64	-322.67	-98.21	338.00	252.68	0.85	95.00
45	4,436.00	6.20	234.80	4,413.21	-106.33	-332.18	-103.83	348.79	252.25	1.35	96.00
46	4,530.00	7.30	238.90	4,506.56	-112.34	-341.45	-109.77	359.45	251.79	1.28	94.00
47	4,626.00	9.40	239.90	4,601.54	-119.42	-353.45	-116.77	373.08	251.33	2.19	96.00
48	4,721.00	9.90	235.30	4,695.19	-127.96	-366.88	-125.20	388.55	250.77	0.97	95.00
49	4,816.00	9.60	226.80	4,788.83	-138.03	-379.37	-135.18	403.70	250.01	1.55	95.00
50	4,912.00	8.90	234.20	4,883.58	-147.86	-391.23	-144.92	418.24	249.30	1.44	96.00
51	5,008.00	8.70	246.60	4,978.46	-155.09	-403.91	-152.05	432.66	249.00	1.98	96.00
52	5,103.00	7.90	245.40	5,072.46	-160.66	-416.45	-157.53	446.36	248.90	0.86	95.00
53	5,199.00	7.70	244.70	5,167.57	-166.15	-428.26	-162.93	459.36	248.80	0.23	96.00
54	5,294.00	7.70	243.60	5,261.72	-171.70	-439.71	-168.40	472.05	248.67	0.16	95.00
55	5,389.00	7.70	243.20	5,355.86	-177.40	-451.09	-174.01	484.72	248.53	0.06	95.00
56	5,484.00	7.50	242.60	5,450.03	-183.12	-462.28	-179.65	497.23	248.39	0.23	95.00
57	5,580.00	6.70	244.10	5,545.29	-188.45	-472.88	-184.90	509.05	248.27	0.86	96.00
58	5,675.00	6.40	244.10	5,639.67	-193.19	-482.63	-189.56	519.86	248.18	0.32	95.00
59	5,770.00	6.00	249.40	5,734.11	-197.25	-492.04	-193.55	530.10	248.16	0.73	95.00
60	5,865.00	5.80	249.80	5,828.61	-200.65	-501.19	-196.88	539.86	248.18	0.21	95.00
61	5,960.00	5.50	250.30	5,923.15	-203.84	-509.98	-200.01	549.21	248.21	0.32	95.00
62	6,056.00	5.20	250.10	6,018.73	-206.87	-518.40	-202.98	558.16	248.24	0.31	96.00
63	6,151.00	3.60	251.60	6,113.45	-209.28	-525.28	-205.33	565.44	248.28	1.69	95.00
64	6,246.00	3.40	252.80	6,208.27	-211.06	-530.80	-207.07	571.22	248.32	0.22	95.00
65	6,341.00	2.10	255.90	6,303.16	-212.31	-535.18	-208.29	575.76	248.36	1.38	95.00
66	6,437.00	1.90	246.30	6,399.10	-213.38	-538.35	-209.34	579.09	248.38	0.41	96.00
67	6,532.00	1.90	250.90	6,494.05	-214.53	-541.28	-210.46	582.24	248.38	0.16	95.00
68	6,627.00	2.00	247.90	6,588.99	-215.67	-544.30	-211.58	585.47	248.38	0.15	95.00
69	6,722.00	1.90	253.20	6,683.94	-216.75	-547.34	-212.63	588.70	248.40	0.22	95.00
70	6,817.00	1.40	254.20	6,778.90	-217.52	-549.97	-213.39	591.42	248.42	0.53	95.00
71	6,913.00	1.30	259.60	6,874.87	-218.03	-552.17	-213.88	593.66	248.45	0.17	96.00
72	7,008.00	1.20	256.40	6,969.85	-218.46	-554.19	-214.30	595.70	248.49	0.13	95.00
73	7,103.00	1.00	253.70	7,064.83	-218.93	-555.96	-214.75	597.51	248.51	0.22	95.00
74	7,198.00	1.00	264.20	7,159.82	-219.25	-557.58	-215.06	599.13	248.53	0.19	95.00
75	7,294.00	1.10	262.50	7,255.80	-219.45	-559.32	-215.25	600.84	248.58	0.11	96.00
76	7,389.00	1.10	259.90	7,350.79	-219.73	-561.13	-215.51	602.61	248.62	0.05	95.00
77	7,484.00	1.00	254.80	7,445.77	-220.11	-562.82	-215.88	604.33	248.64	0.14	95.00
78	7,580.00	0.80	263.20	7,541.76	-220.41	-564.30	-216.17	605.81	248.67	0.25	96.00
79	7,675.00	0.50	239.20	7,636.75	-220.70	-565.31	-216.45	606.87	248.67	0.42	95.00
80	7,770.00	0.60	242.90	7,731.75	-221.14	-566.11	-216.88	607.77	248.66	0.11	95.00
81	7,865.00	0.40	220.40	7,826.74	-221.61	-566.77	-217.36	608.56	248.64	0.29	95.00

Svy	Depth	Inc	Azm	TVD	NS	EW	VS	CD	CA	DLS	CL
82	7,960.00	0.20	193.60	7,921.74	-222.03	-567.02	-217.77	608.94	248.62	0.25	95.00
83	8,055.00	0.30	219.80	8,016.74	-222.38	-567.22	-218.12	609.26	248.59	0.16	95.00
84	8,150.00	0.40	272.00	8,111.74	-222.56	-567.71	-218.29	609.78	248.59	0.34	95.00
85	8,245.00	0.50	248.70	8,206.74	-222.70	-568.43	-218.43	610.50	248.61	0.22	95.00
86	8,341.00	0.70	248.20	8,302.73	-223.07	-569.36	-218.79	611.50	248.61	0.21	96.00
87	8,436.00	0.70	265.60	8,397.72	-223.33	-570.48	-219.04	612.64	248.62	0.22	95.00
88	8,531.00	0.80	250.50	8,492.72	-223.60	-571.69	-219.30	613.86	248.64	0.23	95.00
89	8,626.00	0.90	261.50	8,587.71	-223.93	-573.05	-219.62	615.25	248.66	0.20	95.00
90	8,721.00	1.20	261.50	8,682.69	-224.18	-574.77	-219.86	616.94	248.69	0.32	95.00
91	8,817.00	1.30	260.30	8,778.67	-224.52	-576.84	-220.18	618.99	248.73	0.11	96.00
92	8,912.00	1.40	263.70	8,873.64	-224.83	-579.05	-220.47	621.17	248.78	0.13	95.00
93	9,008.00	1.50	268.30	8,969.61	-224.99	-581.48	-220.62	623.49	248.85	0.16	96.00
94	9,103.00	1.60	272.60	9,064.58	-224.97	-584.04	-220.58	625.87	248.93	0.16	95.00
95	9,198.00	1.60	274.00	9,159.54	-224.82	-586.69	-220.41	628.29	249.03	0.04	95.00
96	9,294.00	1.40	268.70	9,255.51	-224.75	-589.20	-220.32	630.61	249.12	0.25	96.00
97	9,389.00	1.50	275.70	9,350.47	-224.65	-591.60	-220.21	632.82	249.21	0.21	95.00
98	9,485.00	1.50	281.40	9,446.44	-224.28	-594.08	-219.81	635.01	249.32	0.16	96.00
99	9,580.00	1.50	280.60	9,541.41	-223.80	-596.52	-219.32	637.12	249.43	0.02	95.00
100	9,675.00	2.10	290.60	9,636.36	-222.96	-599.37	-218.46	639.50	249.60	0.71	95.00
101	9,770.00	2.80	300.50	9,731.28	-221.17	-603.00	-216.64	642.28	249.86	0.86	95.00
102	9,865.00	3.70	290.70	9,826.12	-218.91	-607.87	-214.34	646.08	250.19	1.11	95.00
103	9,961.00	3.30	282.90	9,921.94	-217.20	-613.46	-212.59	650.77	250.50	0.65	96.00
104	10,056.00	2.60	286.80	10,016.82	-215.97	-618.19	-211.32	654.83	250.74	0.77	95.00
105	10,151.00	2.90	284.10	10,111.71	-214.76	-622.58	-210.08	658.58	250.97	0.34	95.00
106	10,246.00	0.80	28.30	10,206.67	-213.59	-624.60	-208.89	660.11	251.12	3.36	95.00
107	10,342.00	0.60	46.90	10,302.66	-212.65	-623.91	-207.97	659.16	251.18	0.31	96.00
108	10,437.00	0.30	48.90	10,397.66	-212.15	-623.36	-207.47	658.47	251.20	0.32	95.00
109	10,532.00	1.00	102.30	10,492.65	-212.16	-622.36	-207.49	657.53	251.18	0.90	95.00
110	10,628.00	0.40	159.40	10,588.64	-212.66	-621.43	-207.99	656.81	251.11	0.89	96.00
111	10,723.00	0.70	176.90	10,683.64	-213.55	-621.28	-208.88	656.96	251.03	0.36	95.00
112	10,819.00	0.90	136.90	10,779.63	-214.68	-620.73	-210.02	656.81	250.92	0.60	96.00
113	10,915.00	1.00	130.00	10,875.62	-215.77	-619.58	-211.12	656.07	250.80	0.16	96.00
114	11,010.00	0.90	134.60	10,970.60	-216.83	-618.41	-212.18	655.32	250.68	0.13	95.00
115	11,105.00	0.70	165.50	11,065.60	-217.91	-617.73	-213.27	655.04	250.57	0.49	95.00
116	11,200.00	1.00	214.10	11,160.59	-219.16	-618.05	-214.52	655.76	250.48	0.79	95.00
117	11,296.00	1.20	208.90	11,256.57	-220.74	-619.01	-216.08	657.19	250.37	0.23	96.00
118	11,391.00	1.00	184.50	11,351.55	-222.43	-619.55	-217.78	658.27	250.25	0.53	95.00
119	11,486.00	1.00	210.00	11,446.54	-223.98	-620.03	-219.32	659.25	250.14	0.46	95.00
120	11,582.00	0.80	178.80	11,542.53	-225.37	-620.44	-220.71	660.10	250.04	0.54	96.00
121	11,677.00	1.10	184.80	11,637.51	-226.94	-620.50	-222.28	660.70	249.91	0.33	95.00
122	11,776.00	0.90	201.60	11,736.50	-228.61	-620.87	-223.95	661.62	249.79	0.36	99.00
123	11,867.00	0.80	177.80	11,827.49	-229.91	-621.11	-225.25	662.29	249.69	0.40	91.00
124	11,963.00	2.00	23.60	11,923.47	-229.05	-620.41	-224.39	661.34	249.74	2.86	96.00
125	12,058.00	6.00	19.30	12,018.22	-222.84	-618.10	-218.20	657.05	250.17	4.22	95.00
126	12,153.00	22.70	14.70	12,109.93	-200.26	-611.77	-195.67	643.71	251.87	17.61	95.00
127	12,249.00	28.80	11.30	12,196.37	-159.63	-602.53	-155.10	623.31	255.16	6.54	96.00
128	12,344.00	39.40	9.10	12,274.92	-107.27	-593.25	-102.81	602.87	259.75	11.23	95.00
129	12,439.00	46.60	7.20	12,344.36	-43.17	-584.14	-38.79	585.73	265.77	7.70	95.00

Svy	Depth	Inc	Azm	TVD	NS	EW	VS	CD	CA	DLS	CL
130	12,534.00	53.50	4.80	12,405.33	29.21	-576.61	33.54	577.35	272.90	7.52	95.00
131	12,630.00	59.70	3.70	12,458.15	109.10	-570.70	113.38	581.03	280.82	6.53	96.00
132	12,725.00	69.80	3.80	12,498.62	194.73	-565.08	198.96	597.69	289.01	10.63	95.00
133	12,820.00	85.40	1.10	12,518.96	287.13	-561.20	291.34	630.39	297.10	16.65	95.00
134	12,915.00	89.30	359.00	12,523.35	382.01	-561.12	386.21	678.81	304.25	4.66	95.00
135	13,010.00	89.40	358.20	12,524.43	476.97	-563.44	481.19	738.22	310.25	0.85	95.00
136	13,106.00	90.50	0.50	12,524.51	572.96	-564.53	577.18	804.35	315.42	2.66	96.00
137	13,201.00	90.00	0.40	12,524.10	667.95	-563.78	672.17	874.08	319.83	0.54	95.00
138	13,296.00	93.10	2.10	12,521.53	762.88	-561.71	767.08	947.37	323.64	3.72	95.00
139	13,391.00	91.30	1.60	12,517.88	857.76	-568.65	861.93	1,023.64	326.92	1.97	95.00
140	13,487.00	89.50	1.10	12,517.21	953.72	-565.38	957.87	1,104.15	329.74	1.95	96.00
141	13,582.00	89.80	1.10	12,517.79	1,048.71	-554.56	1,052.84	1,186.31	332.13	0.32	95.00
142	13,677.00	89.80	1.90	12,518.13	1,143.67	-552.07	1,147.78	1,269.95	334.23	0.84	95.00
143	13,773.00	87.50	359.90	12,520.39	1,239.62	-550.57	1,243.72	1,356.39	336.05	3.17	96.00
144	13,868.00	87.00	359.00	12,524.95	1,334.51	-551.48	1,338.61	1,443.96	337.55	1.08	95.00
145	13,963.00	90.50	358.30	12,527.02	1,429.44	-553.71	1,433.56	1,532.94	338.83	3.76	95.00
146	14,058.00	91.00	356.40	12,525.77	1,524.33	-558.11	1,528.47	1,623.29	339.89	2.07	95.00
147	14,154.00	89.00	354.60	12,525.77	1,620.02	-565.64	1,624.22	1,715.93	340.75	2.80	96.00
148	14,248.00	91.30	357.40	12,525.53	1,713.78	-572.19	1,718.02	1,806.78	341.54	3.85	94.00
149	14,344.00	91.30	359.10	12,523.35	1,809.70	-575.12	1,813.97	1,898.89	342.37	1.77	96.00
150	14,439.00	92.00	359.20	12,520.61	1,904.65	-576.53	1,908.93	1,990.00	343.16	0.74	95.00
151	14,534.00	90.40	0.40	12,518.63	1,999.63	-576.86	2,003.90	2,081.17	343.91	2.11	95.00
152	14,630.00	90.60	0.40	12,517.79	2,095.62	-576.19	2,099.89	2,173.39	344.63	0.21	96.00
153	14,725.00	91.10	0.60	12,516.38	2,190.61	-575.36	2,194.86	2,264.91	345.28	0.57	95.00
154	14,820.00	89.60	0.60	12,515.80	2,285.60	-574.37	2,289.84	2,356.66	345.89	1.58	95.00
155	14,916.00	90.30	1.40	12,515.88	2,381.58	-572.69	2,385.81	2,449.47	346.48	1.11	96.00
156	15,011.00	90.20	1.40	12,515.47	2,476.55	-570.37	2,480.76	2,541.39	347.03	0.11	95.00
157	15,106.00	91.90	0.40	12,513.73	2,571.52	-568.88	2,575.72	2,633.69	347.53	2.08	95.00
158	15,202.00	90.30	1.60	12,511.88	2,667.48	-567.21	2,671.66	2,727.12	348.00	2.08	96.00
159	15,297.00	88.80	0.30	12,512.63	2,762.46	-565.63	2,766.63	2,819.78	348.43	2.09	95.00
160	15,392.00	88.20	359.80	12,515.12	2,857.43	-565.55	2,861.59	2,912.86	348.80	0.82	95.00
161	15,488.00	88.80	359.30	12,517.63	2,953.39	-566.30	2,957.56	3,007.20	349.15	0.81	96.00
162	15,583.00	89.10	359.30	12,519.37	3,048.37	-567.46	3,052.54	3,100.74	349.45	0.32	95.00
163	15,678.00	89.10	359.40	12,520.86	3,143.35	-568.54	3,147.53	3,194.35	349.75	0.11	95.00
164	15,774.00	90.10	359.80	12,521.53	3,239.35	-569.21	3,243.53	3,288.98	350.03	1.12	96.00
165	15,869.00	90.30	0.00	12,521.20	3,334.34	-569.38	3,338.52	3,382.61	350.31	0.30	95.00
166	15,964.00	91.90	359.90	12,519.38	3,429.32	-569.46	3,433.50	3,476.28	350.57	1.69	95.00
167	16,060.00	90.30	0.30	12,517.53	3,525.30	-569.29	3,529.48	3,570.97	350.83	1.72	96.00
168	16,155.00	89.90	0.00	12,517.37	3,620.30	-569.04	3,624.47	3,664.75	351.07	0.53	95.00
169	16,250.00	90.20	0.40	12,517.29	3,715.30	-568.71	3,719.46	3,758.58	351.30	0.53	95.00
170	16,345.00	90.00	0.20	12,517.12	3,810.30	-568.21	3,814.46	3,852.43	351.52	0.30	95.00
171	16,441.00	90.10	0.30	12,517.04	3,906.30	-567.79	3,910.45	3,947.35	351.73	0.15	96.00
172	16,536.00	89.80	0.40	12,517.12	4,001.30	-567.21	4,005.44	4,041.30	351.93	0.33	95.00
173	16,631.00	88.40	358.40	12,518.61	4,096.27	-568.21	4,100.42	4,135.49	352.10	2.57	95.00
174	16,726.00	89.90	358.80	12,520.02	4,191.23	-570.53	4,195.39	4,229.88	352.25	1.63	95.00
175	16,822.00	90.30	359.20	12,519.85	4,287.22	-572.20	4,291.39	4,325.23	352.40	0.59	96.00
176	16,917.00	90.60	359.80	12,519.11	4,382.21	-573.03	4,386.39	4,419.52	352.55	0.71	95.00
177	17,013.00	91.30	359.70	12,517.51	4,478.19	-573.45	4,482.37	4,514.76	352.70	0.74	96.00

Svy	Depth	Inc	Azm	TVD	NS	EW	VS	CD	CA	DLS	CL
178	17,108.00	90.80	359.80	12,515.77	4,573.18	-573.87	4,577.35	4,609.04	352.85	0.54	95.00
179	17,203.00	91.30	359.20	12,514.03	4,668.16	-574.70	4,672.34	4,703.40	352.98	0.82	95.00
180	17,298.00	90.00	359.00	12,512.96	4,763.14	-576.19	4,767.33	4,797.86	353.10	1.38	95.00
181	17,393.00	90.10	359.10	12,512.87	4,858.12	-577.76	4,862.32	4,892.36	353.22	0.15	95.00
182	17,488.00	90.20	359.00	12,512.62	4,953.11	-579.34	4,957.32	4,986.88	353.33	0.15	95.00
183	17,583.00	90.00	359.40	12,512.46	5,048.10	-580.66	5,052.32	5,081.39	353.44	0.47	95.00
184	17,678.00	90.20	358.50	12,512.29	5,143.08	-582.41	5,147.31	5,175.95	353.54	0.97	95.00
185	17,773.00	89.80	355.70	12,512.29	5,237.95	-587.21	5,242.21	5,270.76	353.60	2.98	95.00
186	17,868.00	89.80	356.90	12,512.62	5,332.75	-593.34	5,337.05	5,365.66	353.65	1.26	95.00
187	17,963.00	87.60	355.60	12,514.78	5,427.52	-599.55	5,431.86	5,460.53	353.70	2.69	95.00
188	18,059.00	92.80	357.90	12,514.44	5,523.32	-604.99	5,527.71	5,556.36	353.75	5.92	96.00
189	18,154.00	92.10	358.60	12,510.38	5,618.19	-607.89	5,622.59	5,650.98	353.82	1.04	95.00
190	18,249.00	90.60	359.70	12,508.14	5,713.15	-609.30	5,717.56	5,745.55	353.91	1.96	95.00
191	18,344.00	88.60	359.00	12,508.81	5,808.13	-610.38	5,812.55	5,840.12	354.00	2.23	95.00
192	18,440.00	89.10	359.60	12,510.73	5,904.11	-611.55	5,908.53	5,935.70	354.09	0.81	96.00
193	18,535.00	87.70	359.00	12,513.39	5,999.06	-612.71	6,003.49	6,030.27	354.17	1.60	95.00
194	18,630.00	88.50	358.80	12,516.54	6,093.99	-614.53	6,098.43	6,124.90	354.24	0.87	95.00
195	18,725.00	90.20	0.20	12,517.61	6,188.97	-615.36	6,193.42	6,219.49	354.32	2.32	95.00
196	18,821.00	91.60	0.00	12,516.11	6,284.96	-615.19	6,289.40	6,315.00	354.41	1.47	96.00
197	18,916.00	90.90	359.70	12,514.03	6,379.94	-615.44	6,384.38	6,409.55	354.49	0.80	95.00
198	19,011.00	92.80	0.20	12,510.97	6,474.88	-615.53	6,479.32	6,504.07	354.57	2.07	95.00
199	19,107.00	91.70	1.10	12,507.20	6,570.80	-614.44	6,575.23	6,599.46	354.66	1.48	96.00
200	19,202.00	90.80	1.50	12,505.13	6,665.75	-612.28	6,670.16	6,693.81	354.75	1.04	95.00
201	19,297.00	90.30	1.60	12,504.21	6,760.71	-609.71	6,765.10	6,788.15	354.85	0.54	95.00
202	19,392.00	90.90	2.90	12,503.22	6,855.63	-605.98	6,859.99	6,882.36	354.95	1.51	95.00
203	19,488.00	89.40	1.90	12,502.97	6,951.54	-601.96	6,955.86	6,977.56	355.05	1.88	96.00
204	19,583.00	89.00	1.90	12,504.29	7,046.48	-598.81	7,050.78	7,071.88	355.14	0.42	95.00
205	19,678.00	91.60	2.00	12,503.80	7,141.42	-595.58	7,145.68	7,166.21	355.23	2.74	95.00
206	19,774.00	90.10	0.90	12,502.37	7,237.37	-593.15	7,241.62	7,261.64	355.31	1.94	96.00
207	19,869.00	88.40	359.50	12,503.62	7,332.36	-592.82	7,336.60	7,356.28	355.38	2.32	95.00
208	19,964.00	88.80	359.70	12,505.94	7,427.33	-593.48	7,431.57	7,451.00	355.43	0.47	95.00
209	20,059.00	88.70	359.50	12,508.01	7,522.30	-594.15	7,526.55	7,545.73	355.48	0.24	95.00
210	20,155.00	88.50	359.80	12,510.36	7,618.27	-594.73	7,622.52	7,641.45	355.54	0.38	96.00
211	20,250.00	89.70	359.20	12,511.85	7,713.25	-595.56	7,717.50	7,736.21	355.58	1.41	95.00
212	20,346.00	90.60	358.20	12,511.60	7,809.22	-597.74	7,813.49	7,832.07	355.62	1.40	96.00
213	20,441.00	89.80	357.60	12,511.26	7,904.16	-601.22	7,908.45	7,926.99	355.65	1.05	95.00
214	20,536.00	92.40	359.40	12,509.44	7,999.10	-603.71	8,003.40	8,021.85	355.68	3.33	95.00
215	20,632.00	88.30	358.30	12,508.85	8,095.05	-605.63	8,099.37	8,117.68	355.72	4.42	96.00
216	20,727.00	90.00	357.40	12,510.26	8,189.97	-609.20	8,194.31	8,212.60	355.75	2.02	95.00
217	20,822.00	91.40	357.50	12,509.10	8,284.87	-613.42	8,289.24	8,307.55	355.77	1.48	95.00
218	20,918.00	90.90	357.30	12,507.18	8,380.75	-617.78	8,385.15	8,403.49	355.78	0.56	96.00
219	21,013.00	90.70	357.30	12,505.85	8,475.64	-622.25	8,480.07	8,498.45	355.80	0.21	95.00
220	21,108.00	92.10	358.50	12,503.53	8,570.54	-625.73	8,574.99	8,593.35	355.82	1.94	95.00
221	21,204.00	92.90	358.80	12,499.34	8,666.42	-627.99	8,670.89	8,689.14	355.86	0.89	96.00
222	21,299.00	93.70	359.00	12,493.87	8,761.24	-629.81	8,765.72	8,783.85	355.89	0.87	95.00
223	21,394.00	93.70	359.20	12,487.74	8,856.03	-631.30	8,860.52	8,878.51	355.92	0.21	95.00
224	21,490.00	93.30	1.00	12,481.88	8,951.85	-631.14	8,956.34	8,974.07	355.97	1.92	96.00
225	21,585.00	90.80	0.70	12,478.48	9,046.77	-629.73	9,051.24	9,068.66	356.02	2.65	95.00

Svy	Depth	Inc	Azm	TVD	NS	EW	VS	CD	CA	DLS	CL
226	21,680.00	91.10	0.30	12,476.91	9,141.76	-628.90	9,146.22	9,163.36	356.06	0.53	95.00
227	21,775.00	89.70	359.00	12,476.25	9,236.75	-629.48	9,241.21	9,258.17	356.10	2.01	95.00
228	21,871.00	89.90	359.00	12,476.58	9,332.73	-631.15	9,337.21	9,354.05	356.13	0.21	96.00
229	21,966.00	91.30	0.70	12,475.59	9,427.72	-631.40	9,432.19	9,448.84	356.17	2.32	95.00
230	22,061.00	90.90	359.40	12,473.76	9,522.70	-631.32	9,527.17	9,543.60	356.21	1.43	95.00
231	22,157.00	91.30	358.60	12,471.92	9,618.67	-633.00	9,623.15	9,639.47	356.23	0.93	96.00
232	22,252.00	91.70	358.30	12,469.43	9,713.60	-635.56	9,718.10	9,734.37	356.26	0.53	95.00
233	22,347.00	89.50	358.30	12,468.44	9,808.55	-638.38	9,813.06	9,829.30	356.28	2.32	95.00
234	22,442.00	89.30	358.30	12,469.43	9,903.50	-641.20	9,908.03	9,924.24	356.30	0.21	95.00
235	22,537.00	90.20	358.20	12,469.85	9,998.45	-644.10	10,003.01	10,019.18	356.31	0.95	95.00
236	22,633.00	90.80	358.10	12,469.01	10,094.40	-647.20	10,098.97	10,115.13	356.33	0.63	96.00
237	22,737.00	90.90	358.00	12,467.47	10,198.33	-650.74	10,202.92	10,219.07	356.35	0.14	104.00
238	22,790.00	90.90	358.00	12,466.63	10,251.29	-652.59	10,255.90	10,272.04	356.36	0.00	53.00