

District I
1625 N. French Dr., Hobbs, NM 88240
Phone: (575) 393-6161 Fax: (575) 393-0720
District II
811 S. First St., Artesia, NM 88210
Phone: (575) 748-1283 Fax: (575) 748-9720
District III
1000 Rio Brazos Road, Aztec, NM 87410
Phone: (505) 334-6178 Fax: (505) 334-6170
District IV
1220 S. St. Francis Dr., Santa Fe, NM 87505
Phone: (505) 476-3460 Fax: (505) 476-3462

State of New Mexico
Energy, Minerals & Natural Resources
Department
OIL CONSERVATION DIVISION
1220 South St. Francis Dr.
Santa Fe, NM 87505

FORM C-102

Revised August 1, 2011

Submit one copy to appropriate

District Office

☐ AMENDED REPORT

WELL LOCATION AND ACREAGE DEDICATION PLAT

¹ API Number 30-025-46606	² Pool Code 97964	³ Pool Name WC025 G07 S243225C; LOWER BONE SPRING
⁴ Property Code 320555	⁵ Property Name PYTHON 36 STATE COM	⁶ Well Number 503H
⁷ OGRID No. 7377	⁸ Operator Name EOG RESOURCES, INC.	⁹ Elevation 3559'

¹⁰Surface Location

UL or lot no.	Section	Township	Range	Lot Idn	Feet from the	North/South line	Feet from the	East/West line	County
N	36	24-S	32-E	-	439'	SOUTH	1688'	WEST	LEA

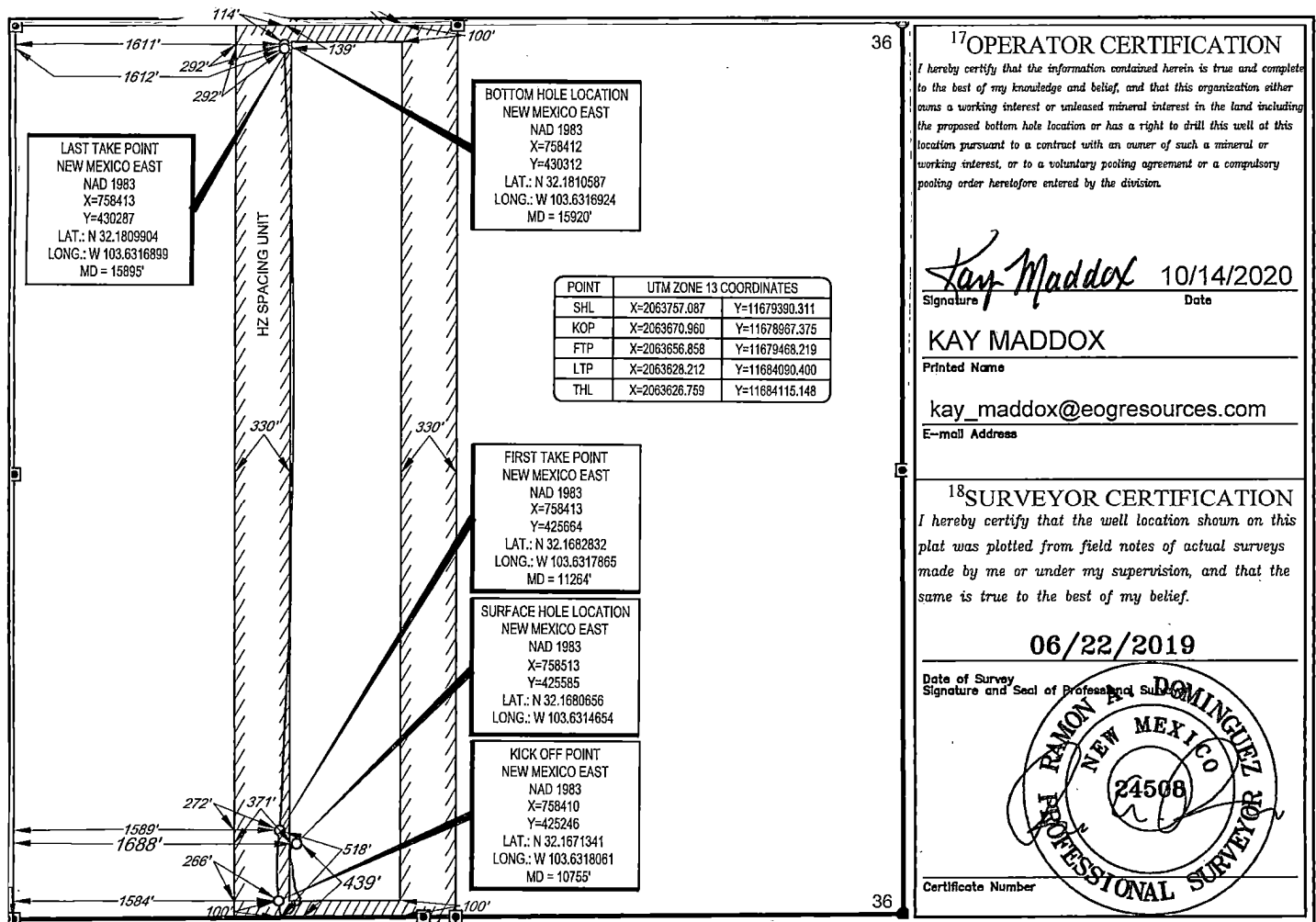
¹¹Bottom Hole Location If Different From Surface

SL

UL or lot no.	Section	Township	Range	Lot Idn	Feet from the	North/South line	Feet from the	East/West line	County
C	36	24-S	32-E	-	114'	NORTH	1611'	WEST	LEA

¹² Dedicated Acres 160.00	¹³ Joint or Infill	¹⁴ Consolidation Code	¹⁵ Order No.
---	-------------------------------	----------------------------------	-------------------------

No allowable will be assigned to this completion until all interests have been consolidated or a non-standard unit has been approved by the division.



Intent ☐ As Drilled ☐ XXX

API # 30-025-46606			
Operator Name: EOG RESOURCES, INC		Property Name: PYTHON 36 STATE COM	Well Number 503H

Kick Off Point (KOP)

UL N	Section 36	Township 24S	Range 32E	Lot	Feet 100	From N/S SOUTH	Feet 1584	From E/W WEST	County LEA
Latitude 32.1671341					Longitude 103.6318061			NAD 1983	

First Take Point (FTP)

UL N	Section 36	Township 24S	Range 32E	Lot	Feet 518	From N/S SOUTH	Feet 1589	From E/W WEST	County LEA
Latitude 32.1682832					Longitude 103.6317865			NAD 1983	

Last Take Point (LTP)

UL C	Section 36	Township 24S	Range 32E	Lot	Feet 139	From N/S NORTH	Feet 1612	From E/W WEST	County LEA
Latitude 32.1809904					Longitude 103.6316899			NAD 1983	

Is this well the defining well for the Horizontal Spacing Unit? ☐ NO

Is this well an infill well? ☐ YES

If infill is yes please provide API if available, Operator Name and well number for Defining well for Horizontal Spacing Unit.

API # 30-025-46607			
Operator Name: EOG RESOURCES, INC		Property Name: PYTHON 36 STATE COM	Well Number 504H

KZ 06/29/2018



EOG Resources - Midland

Lea County, NM (NAD 83 NME)

Python 36 State Com

#503H

OH

Design: OH

Midland PVA

09 February, 2020



EOG Resources
Midland PVA

Company:	EOG Resources - Midland	Local Co-ordinate Reference:	Well #503H
Project:	Lea County, NM (NAD 83 NME)	TVD Reference:	KB = 25 @ 3584.0usft
Site:	Python 36 State Com	MD Reference:	KB = 25 @ 3584.0usft
Well:	#503H	North Reference:	Grid
Wellbore:	OH	Survey Calculation Method:	Minimum Curvature
Design:	OH	Database:	EDM

Project	Lea County, NM (NAD 83 NME)		
Map System:	US State Plane 1983	System Datum:	Mean Sea Level
Geo Datum:	North American Datum 1983		
Map Zone:	New Mexico Eastern Zone		

Site	Python 36 State Com		
Site Position:		Northing:	425,448.00 usft
From:	Map	Easting:	757,528.00 usft
Position Uncertainty:	0.0 usft	Slot Radius:	13-3/16 "
		Latitude:	32° 10' 3.739 N
		Longitude:	103° 38' 4.742 W
		Grid Convergence:	0.37 °

Well	#503H		
Well Position	+N-S	0.0 usft	Northing:
	+E-W	0.0 usft	Easting:
Position Uncertainty	0.0 usft	Wellhead Elevation:	usft
		Latitude:	32° 10' 5.032 N
		Longitude:	103° 37' 53.273 W
		Ground Level:	3,559.0 usft

Wellbore:	OH		
Magnetics	Model Name	Sample Date	Declination
	IGRF2015	2/4/2020	6.69
			Dip Angle
			59.97
			Field Strength
			47,626.96285095

Design	OH		
Audit Notes:			
Version:	1.0	Phase:	ACTUAL
		Tie On Depth:	0.0
Vertical Section:	Depth From (TVD)	+N-S	+E-W
	(usft)	(usft)	(usft)
	0.0	0.0	0.0
			Direction
			359.24

Survey Program	Date	2/9/2020		
From	To	Survey (Wellbore)	Tool Name	Description
(usft)	(usft)			
190.0	15,920.0	Prodirectional (OH)	EOG MWD+IFR1	MWD + IFR1



EOG Resources
Midland PVA

Company:	EOG Resources - Midland	Local Co-ordinate Reference:	Well #503H
Project:	Lea County, NM (NAD 83 NME)	TVD Reference:	KB = 25 @ 3584.0usft
Site:	Python 36 State Com	MD Reference:	KB = 25 @ 3584.0usft
Well:	#503H	North Reference:	Grid
Wellbore:	OH	Survey Calculation Method:	Minimum Curvature
Design:	OH	Database:	EDM

MD (usft)	Inc (°)	Azi (azimuth) (°)	TVD (usft)	N/S (usft)	E/W (usft)	DLeg (°/100usft)	Build (°/100usft)	Turn (°/100usft)	High to Plan (usft)	Right to Plan (usft)
0.0	0.00	0.00	0.0	0.0	0.0	0.00	0.00	0.00	0.0	0.0
190.0	1.50	273.70	190.0	0.2	-2.5	0.79	0.79	0.00	0.0	0.0
304.0	1.50	298.10	303.9	1.0	-5.3	0.56	0.00	21.40	0.0	0.0
391.0	1.20	265.80	390.9	1.4	-7.2	0.92	-0.34	-37.13	0.0	0.0
475.0	1.10	271.80	474.9	1.4	-8.9	0.19	-0.12	7.14	0.0	0.0
573.0	0.80	238.70	572.9	1.1	-10.4	0.63	-0.31	-33.78	0.0	0.0
667.0	1.50	249.20	666.9	0.3	-12.1	0.77	0.74	11.17	0.0	0.0
762.0	1.70	250.70	761.8	-0.6	-14.6	0.22	0.21	1.58	0.0	0.0
856.0	1.40	215.00	855.8	-2.0	-16.6	1.06	-0.32	-37.98	0.0	0.0
951.0	1.30	209.40	950.8	-3.9	-17.8	0.17	-0.11	-5.89	0.0	0.0
1,046.0	0.70	235.00	1,045.8	-5.2	-18.8	0.77	-0.63	26.95	0.0	0.0
1,140.0	0.70	248.10	1,139.8	-5.7	-19.8	0.17	0.00	13.94	0.0	0.0
1,164.0	0.70	313.00	1,163.7	-5.7	-20.0	3.13	0.00	270.42	0.0	0.0
1,317.0	1.60	284.70	1,316.7	-5.2	-22.8	0.82	0.59	-31.57	-1.5	0.6
1,411.0	3.70	220.60	1,410.6	-7.7	-26.1	2.96	2.23	-46.91	-4.0	-1.8
1,506.0	6.60	196.30	1,505.2	-15.2	-29.7	3.76	3.05	-25.58	-6.8	-5.3
1,600.0	7.30	194.30	1,598.5	-26.2	-32.6	0.79	0.74	-2.13	-10.7	-7.1
1,694.0	7.20	195.40	1,691.8	-37.7	-35.7	0.18	-0.11	1.17	-14.8	-8.6
1,789.0	6.50	188.20	1,786.1	-48.7	-38.0	1.16	-0.74	-7.58	-16.6	-11.9
1,883.0	6.50	175.30	1,879.5	-59.3	-38.4	1.55	0.00	-13.72	-16.0	-15.5
1,978.0	6.40	175.20	1,973.9	-69.9	-37.5	0.11	-0.11	-0.11	-18.4	-14.4
2,073.0	5.10	172.60	2,068.4	-79.4	-36.5	1.40	-1.37	-2.74	-19.1	-14.1
2,167.0	3.90	168.50	2,162.1	-86.7	-35.3	1.32	-1.28	-4.36	-17.5	-13.7
2,262.0	3.70	167.20	2,256.9	-92.8	-34.0	0.23	-0.21	-1.37	-15.5	-12.0
2,356.0	3.40	169.10	2,350.8	-98.5	-32.8	0.34	-0.32	2.02	-13.7	-9.4
2,450.0	3.30	169.00	2,444.6	-103.9	-31.7	0.11	-0.11	-0.11	-11.2	-7.5
2,545.0	3.30	166.90	2,539.4	-109.3	-30.6	0.13	0.00	-2.21	-8.4	-5.8



EOG Resources
Midland PVA

Company:	EOG Resources - Midland	Local Co-ordinate Reference:	Well #503H
Project:	Lea County, NM (NAD 83 NME)	TVD Reference:	KB = 25 @ 3584.0usft
Site:	Python 36 State Com	MD Reference:	KB = 25 @ 3584.0usft
Well:	#503H	North Reference:	Grid
Wellbore:	OH	Survey Calculation Method:	Minimum Curvature
Design:	OH	Database:	EDM

MD (usft)	Inc (°)	Azi (azimuth) (°)	TVD (usft)	N/S (usft)	E/W (usft)	DLeg (°/100usft)	Build (°/100usft)	Turn (°/100usft)	High to Plan (usft)	Right to Plan (usft)
2,640.0	3.20	162.60	2,634.3	-114.5	-29.2	0.28	-0.11	-4.53	-5.6	-3.8
2,734.0	3.10	165.30	2,728.1	-119.4	-27.8	0.19	-0.11	2.87	-3.1	-1.0
2,828.0	2.90	164.10	2,822.0	-124.2	-26.5	0.22	-0.21	-1.28	-0.2	1.5
2,923.0	2.70	164.50	2,916.9	-128.6	-25.2	0.21	-0.21	0.42	3.0	4.1
3,018.0	2.80	165.90	3,011.8	-132.9	-24.1	0.13	-0.11	1.47	6.7	6.5
3,112.0	3.90	167.00	3,105.6	-138.1	-22.8	1.38	1.38	1.17	9.4	8.6
3,207.0	6.50	171.60	3,200.2	-146.5	-21.3	2.77	2.74	4.84	9.6	9.6
3,301.0	6.70	172.70	3,293.6	-157.2	-19.9	0.25	0.21	1.17	7.0	11.0
3,396.0	6.70	174.30	3,388.0	-168.3	-18.6	0.20	0.00	1.68	4.4	12.1
3,491.0	6.60	178.30	3,482.3	-179.2	-17.9	0.50	-0.11	4.21	2.5	12.8
3,585.0	6.00	179.30	3,575.8	-189.5	-17.7	0.65	-0.64	1.06	0.5	13.3
3,680.0	5.10	172.60	3,670.3	-198.7	-17.1	1.17	-0.95	-7.05	-2.0	14.1
3,775.0	4.30	161.10	3,765.0	-206.2	-15.4	1.30	-0.84	-12.11	-4.8	15.6
3,870.0	3.70	157.00	3,859.8	-212.4	-13.0	0.70	-0.63	-4.32	-5.0	18.6
3,964.0	4.50	163.90	3,953.5	-218.8	-10.8	1.00	0.85	7.34	-1.7	22.0
4,058.0	6.70	176.50	4,047.1	-227.8	-9.5	2.67	2.34	13.40	2.2	23.6
4,152.0	6.20	178.40	4,140.5	-238.3	-9.0	0.58	-0.53	2.02	0.6	24.3
4,247.0	6.20	172.00	4,234.9	-248.5	-8.1	0.73	0.00	-6.74	-4.2	25.1
4,341.0	6.30	163.30	4,328.4	-258.5	-5.9	1.01	0.11	-9.26	-10.4	26.1
4,436.0	6.00	160.90	4,422.8	-268.2	-2.8	0.42	-0.32	-2.53	-14.0	28.5
4,531.0	6.40	157.30	4,517.3	-277.8	0.9	0.59	0.42	-3.79	-18.5	30.8
4,625.0	7.00	153.50	4,610.6	-287.7	5.4	0.79	0.64	-4.04	-24.3	33.2
4,720.0	7.40	150.20	4,704.9	-298.2	11.1	0.61	0.42	-3.47	-31.1	35.8
4,814.0	6.60	150.20	4,798.2	-308.2	16.8	0.85	-0.85	0.00	-35.7	40.2
4,907.0	5.80	150.90	4,890.6	-316.9	21.7	0.86	-0.86	0.75	-38.3	44.9
5,002.0	4.90	164.10	4,985.2	-325.0	25.1	1.60	-0.95	13.89	-28.0	56.2
5,096.0	5.30	182.10	5,078.9	-333.2	26.1	1.75	0.43	19.15	-9.3	63.4



EOG Resources
Midland PVA

Company:	EOG Resources - Midland	Local Co-ordinate Reference:	Well #503H
Project:	Lea County, NM (NAD 83 NME)	TVD Reference:	KB = 25 @ 3584.0usft
Site:	Python 36 State Corn	MD Reference:	KB = 25 @ 3584.0usft
Well:	#503H	North Reference:	Grid
Wellbore:	OH	Survey Calculation Method:	Minimum Curvature
Design:	OH	Database:	EDM

MD (usft)	Inc. (°)	Azi (azimuth) (°)	TVD (usft)	N/S (usft)	E/W (usft)	DLeg (°/100usft)	Build (°/100usft)	Turn (°/100usft)	High to Plan (usft)	Right to Plan (usft)
5,191.0	4.90	181.40	5,173.5	-341.6	25.8	0.43	-0.42	-0.74	-10.2	63.4
5,286.0	5.10	200.90	5,268.1	-349.6	24.2	1.79	0.21	20.53	11.2	62.0
5,380.0	5.30	214.90	5,361.7	-357.1	20.2	1.36	0.21	14.89	24.4	54.1
5,475.0	5.20	228.10	5,456.4	-363.6	14.5	1.27	-0.11	13.89	33.3	42.2
5,570.0	6.20	254.70	5,550.9	-367.8	6.4	2.94	1.05	28.00	42.2	16.8
5,664.0	4.90	267.50	5,644.5	-369.3	-2.5	1.90	-1.38	13.62	36.7	0.0
5,758.0	4.40	274.20	5,738.1	-369.2	-10.1	0.78	-0.53	7.13	28.6	-11.9
5,853.0	2.90	283.80	5,833.0	-368.4	-16.1	1.70	-1.58	10.11	19.0	-22.2
5,948.0	1.70	310.10	5,927.9	-366.9	-19.5	1.65	-1.26	27.68	1.7	-29.8
6,042.0	1.80	307.00	6,021.8	-365.1	-21.8	0.15	0.11	-3.30	0.2	-30.0
6,137.0	1.90	358.50	6,116.8	-362.7	-23.0	1.69	0.11	54.21	-25.9	-17.7
6,232.0	3.10	27.70	6,211.7	-358.8	-21.8	1.80	1.26	30.74	-35.2	-2.0
6,326.0	3.10	30.70	6,305.6	-354.4	-19.4	0.17	0.00	3.19	-40.3	-0.1
6,421.0	3.10	29.70	6,400.4	-349.9	-16.8	0.06	0.00	-1.05	-45.4	-0.8
6,516.0	2.90	35.20	6,495.3	-345.7	-14.1	0.37	-0.21	5.79	-50.3	3.8
6,610.0	2.40	77.00	6,589.2	-343.4	-10.8	2.07	-0.53	44.47	-38.7	37.9
6,705.0	3.30	152.80	6,684.1	-345.3	-7.6	3.76	0.95	79.79	24.0	48.8
6,799.0	2.60	176.00	6,778.0	-349.9	-6.3	1.46	-0.74	24.68	36.7	36.4
6,894.0	2.40	177.50	6,872.9	-354.0	-6.0	0.22	-0.21	1.58	33.5	35.5
6,988.0	2.50	185.80	6,966.8	-358.0	-6.1	0.39	0.11	8.83	34.2	30.6
7,083.0	0.90	182.80	7,061.8	-360.8	-6.4	1.69	-1.68	-3.16	29.8	32.2
7,177.0	0.70	188.60	7,155.8	-362.1	-6.5	0.23	-0.21	6.17	31.6	29.1
7,271.0	0.80	174.80	7,249.8	-363.3	-6.5	0.22	0.11	-14.68	22.5	35.6
7,327.5	0.68	180.62	7,306.3	-364.1	-6.5	0.25	-0.22	10.30	25.3	33.2
Brushy Top (Python 36 SC #503H)										
7,366.0	0.60	185.90	7,344.7	-364.5	-6.5	0.25	-0.20	13.72	27.8	30.8
7,461.0	0.80	180.30	7,439.7	-365.7	-6.6	0.22	0.21	-5.89	23.5	33.3



EOG Resources
Midland PVA

Company:	EOG Resources - Midland	Local Co-ordinate Reference:	Well #503H
Project:	Lea County, NM (NAD 83 NME)	TVD Reference:	KB = 25 @ 3584.0usft
Site:	Python 36 Slate Com	MD Reference:	KB = 25 @ 3584.0usft
Well:	#503H	North Reference:	Grid
Wellbore:	OH	Survey Calculation Method:	Minimum Curvature
Design:	OH	Database:	EDM

MD (usft)	Inc (°)	Azi (azimuth) (°)	TVD (usft)	N/S (usft)	E/W (usft)	DLeg (°/100usft)	Build (°/100usft)	Turn (°/100usft)	High to Plan (usft)	Right to Plan (usft)
7,555.0	0.90	192.30	7,533.7	-367.0	-6.7	0.22	0.11	12.77	28.5	27.8
7,650.0	0.50	194.00	7,628.7	-368.2	-7.0	0.42	-0.42	1.79	28.2	27.0
7,744.0	0.50	196.10	7,722.7	-369.0	-7.2	0.02	0.00	2.23	28.3	25.9
7,839.0	0.70	173.40	7,817.7	-369.9	-7.3	0.32	0.21	-23.89	15.2	34.7
7,933.0	0.70	204.90	7,911.7	-371.0	-7.4	0.40	0.00	33.51	30.0	22.0
8,027.0	1.00	206.30	8,005.7	-372.3	-8.0	0.32	0.32	1.49	29.1	21.2
8,121.0	0.70	176.60	8,099.7	-373.6	-8.4	0.56	-0.32	-31.60	13.5	32.5
8,215.0	1.10	179.30	8,193.7	-375.1	-8.3	0.43	0.43	2.87	13.5	31.8
8,310.0	1.50	201.70	8,288.7	-377.1	-8.8	0.67	0.42	23.58	22.6	24.6
8,404.0	1.70	205.30	8,382.6	-379.5	-9.8	0.24	0.21	3.83	21.4	23.2
8,498.0	2.10	208.60	8,476.6	-382.3	-11.3	0.44	0.43	3.51	19.6	22.0
8,593.0	1.90	211.00	8,571.5	-385.2	-12.9	0.23	-0.21	2.53	17.2	21.3
8,687.0	2.30	207.80	8,665.4	-388.2	-14.6	0.44	0.43	-3.40	12.6	22.1
8,781.0	2.80	215.20	8,759.3	-391.7	-16.8	0.64	0.53	7.87	11.1	20.6
8,876.0	3.00	217.40	8,854.2	-395.6	-19.6	0.24	0.21	2.32	7.1	20.2
8,970.0	3.30	218.60	8,948.1	-399.7	-22.8	0.33	0.32	1.28	2.4	20.1
9,065.0	3.90	219.10	9,042.9	-404.3	-26.6	0.63	0.63	0.53	-3.4	20.1
9,159.0	5.20	231.70	9,136.6	-409.4	-31.9	1.74	1.38	13.40	-6.3	21.1
9,254.0	2.70	208.00	9,231.4	-414.1	-36.3	3.09	-2.63	-24.95	-20.4	15.0
9,348.0	0.60	199.90	9,325.3	-416.5	-37.5	2.24	-2.23	-8.62	-25.0	11.7
9,442.0	0.30	30.40	9,419.3	-416.8	-37.6	0.95	-0.32	-180.32	22.7	-16.1
9,537.0	1.00	321.50	9,514.3	-415.9	-38.0	0.98	0.74	-72.53	22.3	15.2
9,725.0	2.90	287.10	9,702.2	-413.2	-43.5	1.14	1.01	-18.30	3.7	24.2
9,819.0	3.30	259.50	9,796.1	-413.0	-48.5	1.63	0.43	-29.36	-12.7	22.1
9,913.0	4.50	237.10	9,889.9	-415.5	-54.2	2.04	1.28	-23.83	-26.3	14.5
10,007.0	3.90	253.90	9,983.6	-418.4	-60.4	1.45	-0.64	17.87	-27.7	22.6
10,102.0	3.60	260.90	10,078.4	-419.8	-66.5	0.58	-0.32	7.37	-31.0	26.2



EOG Resources
Midland PVA

Company:	EOG Resources - Midland	Local Co-ordinate Reference:	Well #503H
Project:	Lea County, NM (NAD 83 NME)	TVD Reference:	KB = 25 @ 3584.0usft
Site:	Python 36 State Com	MD Reference:	KB = 25 @ 3584.0usft
Well:	#503H	North Reference:	Grid
Wellbore:	OH	Survey Calculation Method:	Minimum Curvature
Design:	OH	Database:	EDM

Survey											
MD (usft)	Inc (°)	Azi (azimuth) (°)	TVD (usft)	N/S (usft)	E/W (usft)	DLeg (°/100usft)	Build (°/100usft)	Turn (°/100usft)	High to Plan (usft)	Right to Plan (usft)	
10,149.0	3.60	260.20	10,125.3	-420.2	-69.4	0.09	0.00	-1.49	-34.2	25.8	
10,244.0	3.60	256.40	10,220.1	-421.4	-75.2	0.25	0.00	-4.00	-41.8	23.3	
10,339.0	3.40	256.50	10,315.0	-422.8	-80.8	0.21	-0.21	0.11	-47.6	23.4	
10,433.0	3.00	262.60	10,408.8	-423.8	-86.0	0.56	-0.43	6.49	-50.1	28.6	
10,491.0	3.90	313.92	10,466.7	-422.6	-88.9	5.33	1.55	88.48	-11.8	58.2	
KOP, MD:10491.0, TVD:10466.7, N/S:-422.6, E/W:-88.9, INC:3.90											
10,528.0	5.40	330.00	10,503.6	-420.2	-90.7	5.33	4.06	43.47	3.6	60.5	
10,623.0	19.00	350.40	10,596.3	-401.0	-95.5	14.80	14.32	21.47	19.8	59.4	
10,717.0	29.90	353.00	10,681.7	-362.5	-101.0	11.65	11.60	2.77	12.4	62.5	
10,812.0	43.50	355.40	10,757.7	-306.2	-106.5	14.39	14.32	2.53	-0.3	66.2	
10,906.0	51.40	357.30	10,821.2	-237.1	-110.8	8.53	8.40	2.02	-16.1	69.8	
10,958.8	55.23	357.36	10,852.7	-194.9	-112.8	7.26	7.26	0.11	-24.7	71.4	
FTP (Python 36 SC #503H)											
11,001.0	58.30	357.40	10,875.9	-159.6	-114.4	7.26	7.26	0.10	-30.5	72.8	
11,079.4	60.28	3.01	10,915.9	-92.2	-114.1	6.65	2.52	7.16	-32.9	73.8	
FTP Crossing, MD:11079.4, TVD:10915.9, N/S:-92.2, E/W:-114.1, INC:60.28											
11,095.0	60.70	4.10	10,923.6	-78.7	-113.3	6.65	2.70	6.98	-32.4	73.1	
11,190.0	69.30	6.10	10,963.7	7.0	-105.6	9.25	9.05	2.11	-31.1	65.0	
11,284.0	76.80	3.10	10,991.1	96.5	-98.4	8.54	7.98	-3.19	-28.1	56.6	
11,379.0	79.70	3.70	11,010.5	189.4	-92.9	3.11	3.05	0.63	-15.7	50.6	
11,410.0	84.70	3.90	11,014.7	220.0	-90.9	16.14	16.13	0.65	-12.0	48.2	
11,474.0	92.90	2.00	11,016.0	283.9	-87.6	13.15	12.81	-2.97	-11.0	44.6	
11,568.0	93.80	1.60	11,010.5	377.7	-84.6	1.05	0.96	-0.43	-16.5	41.2	
11,663.0	90.80	1.70	11,006.7	472.5	-81.9	3.16	-3.16	0.11	-20.3	38.0	
11,757.0	89.00	2.30	11,006.9	566.5	-78.6	2.02	-1.91	0.64	-20.1	34.3	
11,851.0	89.60	2.70	11,008.0	660.4	-74.5	0.77	0.64	0.43	-18.9	29.8	
11,946.0	91.00	2.60	11,007.5	755.3	-70.1	1.48	1.47	-0.11	-19.5	25.0	



EOG Resources
Midland PVA

Company:	EOG Resources - Midland	Local Co-ordinate Reference:	Well #503H
Project:	Lea County, NM (NAD 83 NME)	TVD Reference:	KB = 25 @ 3584.0usft
Site:	Python 36 State Com	MD Reference:	KB = 25 @ 3584.0usft
Well:	#503H	North Reference:	Grid
Wellbore:	OH	Survey Calculation Method:	Minimum Curvature
Design:	OH	Database:	EDM

MD (usft)	Inc (°)	Azi (azimuth) (°)	TVD (usft)	N/S (usft)	E/W (usft)	DLeg (°/100usft)	Build (°/100usft)	Turn (°/100usft)	High to Plan (usft)	Right to Plan (usft)
12,040.0	88.00	2.60	11,008.3	849.1	-65.9	3.19	-3.19	0.00	-18.6	20.3
12,135.0	88.40	2.70	11,011.3	944.0	-61.5	0.43	0.42	0.11	-15.6	15.5
12,230.0	89.10	2.70	11,013.4	1,038.9	-57.0	0.74	0.74	0.00	-13.6	10.6
12,324.0	90.00	2.60	11,014.1	1,132.8	-52.7	0.96	0.96	-0.11	-12.8	5.8
12,419.0	90.70	2.70	11,013.6	1,227.7	-48.3	0.74	0.74	0.11	-13.4	1.0
12,513.0	88.50	1.10	11,014.2	1,321.6	-45.2	2.89	-2.34	-1.70	-12.8	-2.5
12,608.0	88.50	0.70	11,016.7	1,416.6	-43.7	0.42	0.00	-0.42	-10.3	-4.4
12,703.0	89.60	0.10	11,018.3	1,511.5	-43.0	1.32	1.16	-0.63	-8.7	-5.5
12,797.0	90.30	359.80	11,018.4	1,605.5	-43.1	0.81	0.74	-0.32	-8.6	-5.9
12,892.0	91.10	359.80	11,017.2	1,700.5	-43.4	0.84	0.84	0.00	-9.8	-6.0
12,988.0	90.20	0.90	11,016.1	1,794.5	-42.8	1.51	-0.96	1.17	-10.8	-7.0
13,081.0	89.80	1.30	11,016.1	1,889.5	-41.0	0.60	-0.42	0.42	-10.8	-9.2
13,176.0	90.60	1.00	11,015.8	1,984.5	-39.1	0.90	0.84	-0.32	-11.2	-11.5
13,270.0	91.30	0.90	11,014.2	2,078.5	-37.6	0.75	0.74	-0.11	-12.7	-13.5
13,365.0	89.60	0.50	11,013.5	2,173.4	-36.4	1.84	-1.79	-0.42	-13.5	-15.1
13,459.0	89.60	0.60	11,014.2	2,267.4	-35.5	0.11	0.00	0.11	-12.8	-16.4
13,554.0	90.60	0.30	11,014.0	2,362.4	-34.7	1.10	1.05	-0.32	-13.0	-17.6
13,649.0	92.00	0.20	11,011.8	2,457.4	-34.3	1.48	1.47	-0.11	-15.1	-18.5
13,743.0	90.30	0.30	11,009.9	2,551.4	-33.9	1.81	-1.81	0.11	-17.0	-19.3
13,838.0	89.30	0.00	11,010.3	2,646.4	-33.7	1.10	-1.05	-0.32	-16.7	-20.0
13,933.0	90.20	359.80	11,010.7	2,741.4	-33.8	0.97	0.95	-0.21	-16.3	-20.2
14,028.0	90.30	359.70	11,010.3	2,836.4	-34.3	0.15	0.11	-0.11	-16.7	-20.2
14,122.0	90.90	359.70	11,009.3	2,930.4	-34.7	0.64	0.64	0.00	-17.7	-20.2
14,217.0	91.30	359.60	11,007.5	3,025.3	-35.3	0.43	0.42	-0.11	-19.5	-20.0
14,311.0	92.40	359.60	11,004.4	3,119.3	-36.0	1.17	1.17	0.00	-22.5	-19.8
14,406.0	90.50	358.60	11,002.0	3,214.2	-37.5	2.26	-2.00	-1.05	-25.0	-18.7
14,500.0	89.40	358.30	11,002.1	3,308.2	-40.0	1.21	-1.17	-0.32	-24.9	-16.6



EOG Resources
Midland PVA

Company:	EOG Resources - Midland	Local Co-ordinate Reference:	Well #503H
Project:	Lea County, NM (NAD 83 NME)	TVD Reference:	KB = 25 @ 3584.0usft
Site:	Python 36 State Com	MD Reference:	KB = 25 @ 3584.0usft
Well:	#503H	North Reference:	Grid
Wellbore:	OH	Survey Calculation Method:	Minimum Curvature
Design:	OH	Database:	EDM

MD (usft)	Inc (")	Azi (azimuth) (°)	TVD (usft)	N/S (usft)	E/W (usft)	DLeg (°/100usft)	Build (°/100usft)	Turn (°/100usft)	High to Plan (usft)	Right to Plan (usft)
14,595.0	89.80	358.20	11,002.8	3,403.2	-42.9	0.43	0.42	-0.11	-24.2	-14.1
14,690.0	90.90	358.20	11,002.2	3,498.1	-45.9	1.16	1.16	0.00	-24.8	-11.6
14,784.0	88.70	359.00	11,002.5	3,592.1	-48.2	2.49	-2.34	0.85	-24.5	-9.7
14,879.0	88.10	358.60	11,005.2	3,687.0	-50.2	0.76	-0.63	-0.42	-21.8	-8.1
14,974.0	88.50	358.20	11,008.0	3,781.9	-52.8	0.60	0.42	-0.42	-19.0	-5.9
15,068.0	88.80	357.70	11,010.2	3,875.9	-56.2	0.62	0.32	-0.53	-16.8	-3.0
15,163.0	89.70	357.30	11,011.5	3,970.8	-60.3	1.04	0.95	-0.42	-15.5	0.8
15,257.0	90.60	356.70	11,011.2	4,064.6	-65.3	1.15	0.96	-0.64	-15.8	5.3
15,352.0	91.40	356.20	11,009.5	4,159.4	-71.1	0.99	0.84	-0.53	-17.4	10.7
15,446.0	92.50	355.70	11,006.4	4,253.1	-77.8	1.29	1.17	-0.53	-20.6	16.9
15,541.0	93.30	355.40	11,001.5	4,347.7	-85.1	0.90	0.84	-0.32	-25.4	23.9
15,635.0	93.90	357.70	10,995.6	4,441.4	-90.8	2.52	0.64	2.45	-31.3	29.1
15,730.0	94.70	358.10	10,988.5	4,536.0	-94.3	0.94	0.84	0.42	-38.4	32.2
15,825.0	95.70	357.90	10,979.9	4,630.6	-97.6	1.07	1.05	-0.21	-47.0	35.2
Last MWD Survey (MD=15825.0')										
15,918.9	95.70	357.90	10,970.6	4,724.0	-101.0	0.00	0.00	0.00	-56.3	38.2
PBHL (Python 36 SC #503H)										
15,920.0	95.70	357.90	10,970.5	4,725.0	-101.0	0.00	0.00	0.00	-56.4	38.2
Projection to Bit (MD=15920.0')										

Design Annotations				
Measured Depth (usft)	Vertical Depth (usft)	Local Coordinates		Comment
		+N/-S (usft)	+E/-W (usft)	
10,491.0	10,466.7	-422.6	-88.9	KOP, MD:10491.0', TVD:10466.7', N/S:-422.6', E/W:-88.9', INC:3.90
11,079.4	10,915.9	-92.2	-114.1	FTP Crossing, MD:11079.4', TVD:10915.9', N/S:-92.2', E/W:-114.1', INC:60.28
15,825.0	10,979.9	4,630.6	-97.6	Last MWD Survey (MD=15825.0')
15,920.0	10,970.5	4,725.0	-101.0	Projection to Bit (MD=15920.0')



EOG Resources
Midland PVA

Company:	EOG Resources - Midland	Local Co-ordinate Reference:	Well #503H
Project:	Lea County, NM (NAD 83 NME)	TVD Reference:	KB = 25 @ 3584.0usft
Site:	Python 36 State Com	MD Reference:	KB = 25 @ 3584.0usft
Well:	#503H	North Reference:	Grid
Wellbore:	OH	Survey Calculation Method:	Minimum Curvature
Design:	OH	Database:	EDM

Checked By: _____	Approved By: _____	Date: _____
-------------------	--------------------	-------------

I certify this survey to be true and correct to the best of my belief and knowledge.

Kay Maddox 10/14/2020
Signed Date



Lea County, NM (NAD 83 NME)

Python 36 State Com #503H

Plan #2

PROJECT DETAIL S: Lea County, NM (NAD 83 NME)

Geodetic System: US State Plane 1983
Datum: North American Datum 1983
Ellipsoid: GRS 1980
Zone: New Mexico Eastern Zone
System Datum: Mean Sea Level

WELL DETAILS: #503H

KB = 25 @ 3584.0ush 3559.0
Northing 425585.00 Easting 758513.00 Latitude 32° 10' 5.032 N Longitude 103° 37' 53.273 W

Azimuths to Grid North
True North: -0.37°
Magnetic North: 6.32°
Magnetic Field
Strength: 47827.0nT
Dip Angle: 59.97°
Date: 2/4/2020
Model: IGRF2015

To convert a Magnetic Direction to a Grid Direction, Add 6.32°
To convert a Magnetic Direction to a True Direction, Add 6.69° East
To convert a True Direction to a Grid Direction, Subtract 6.32°

SECTION DETAILS

MD	Inc	Azi	TVD	+N-S	+E-W	Dleg	TFace	Vsect	Target
1164.0	0.70	313.00	1163.7	-5.7	-20.0	0.00	0.00	-5.4	
1300.3	0.70	313.00	1300.0	-4.5	-21.2	0.00	0.00	-4.3	
1574.1	5.00	182.60	1573.5	-15.3	-23.0	2.00	-135.97	-15.0	
5742.9	5.00	182.60	5726.4	-378.1	-39.5	0.00	0.00	-377.6	
5992.7	0.00	0.00	5976.0	-389.0	-40.0	2.00	180.00	-388.4	
10470.7	0.00	0.00	10454.0	-389.0	-40.0	0.00	0.00	-388.4	
11370.7	90.00	359.74	11027.0	183.9	-42.6	10.00	359.74	184.5	
15917.8	90.00	359.74	11027.0	4731.0	-63.0	0.00	0.00	4731.4	PBHL (Python 36 SC #503H)

CASING DETAILS

No casing data is available

WELLBORE TARGET DETAILS (MAP CO-ORDINATES)

Name	TVD	+N-S	+E-W	Northing	Easting
Brushy Top (Python 36 SC #503H)	7308.0	-389.0	-40.0	425196.00	758473.00
PBHL (Python 36 SC #503H)	11027.0	4731.0	-63.0	430316.00	768450.00
FTP (Python 36 SC #503H)	11027.0	-339.0	-40.0	425246.00	766473.00

