

District I
1625 N. French Dr., Hobbs, NM 88240
Phone: (575) 393-6161 Fax: (575) 393-0720
District II
811 S. First St., Artesia, NM 88210
Phone: (575) 748-1283 Fax: (575) 748-9720
District III
1000 Rio Brazos Road, Aztec, NM 87410
Phone: (505) 334-6178 Fax: (505) 334-6170
District IV
1220 S. St. Francis Dr., Santa Fe, NM 87505
Phone: (505) 476-3460 Fax: (505) 476-3462

State of New Mexico
Energy, Minerals & Natural Resources
Department
OIL CONSERVATION DIVISION
1220 South St. Francis Dr.
Santa Fe, NM 87505

FORM C-102
Revised August 1, 2011
Submit one copy to appropriate
District Office

AMENDED REPORT

WELL LOCATION AND ACREAGE DEDICATION PLAT

¹ API Number 30-025-46524		² Pool Code 98094		³ Pool Name BOBCAT DRAW; UPPER WOLFCAMP	
⁴ Property Code 326481		⁵ Property Name ANTERO 14 FED COM			⁶ Well Number #701H
⁷ OGRID No. 7377		⁸ Operator Name EOG RESOURCES, INC.			⁹ Elevation 3361'

¹⁰Surface Location

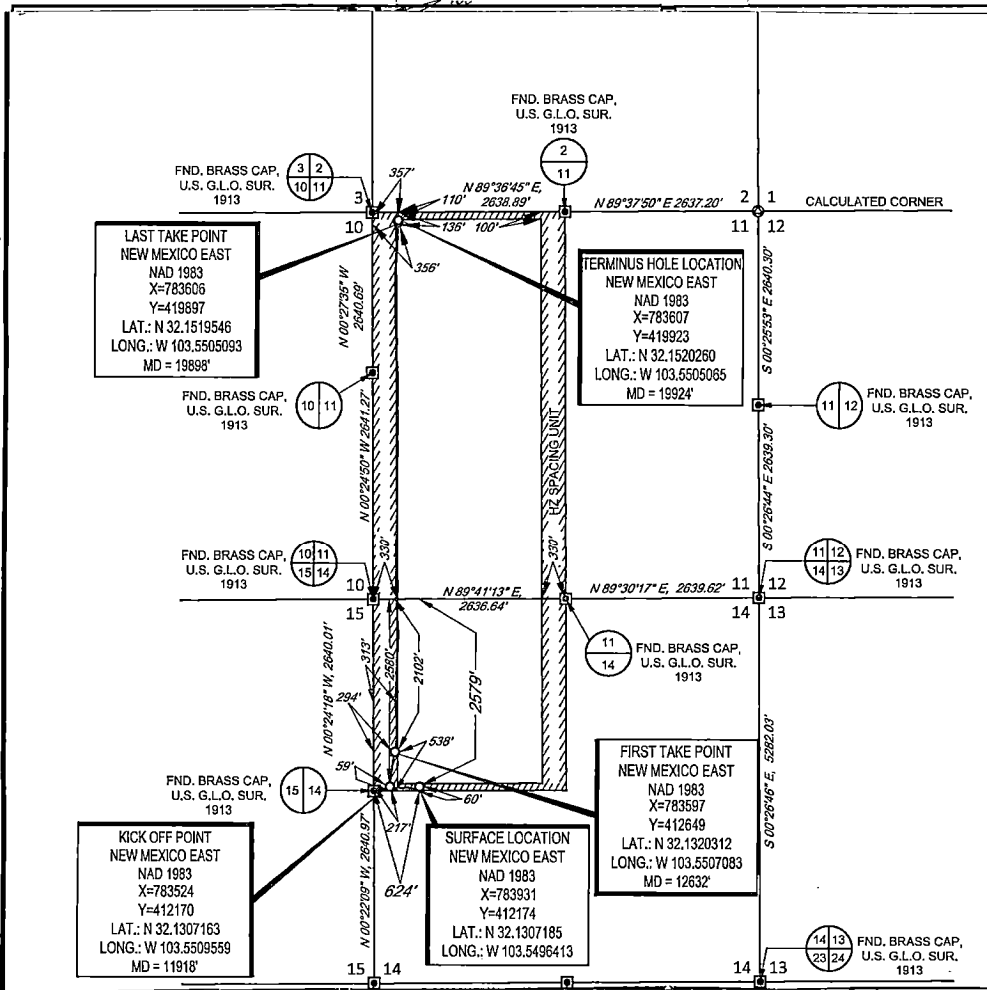
UL or lot no.	Section	Township	Range	Lot Idn	Feet from the	North/South line	Feet from the	East/West line	County
E	14	25-S	33-E	-	2579'	NORTH	624'	WEST	LEA

¹¹Bottom Hole Location If Different From Surface

UL or lot no.	Section	Township	Range	Lot Idn	Feet from the	North/South line	Feet from the	East/West line	County
D	11	25-S	33-E	-	110'	NORTH	357'	WEST	LEA

¹² Dedicated Acres 480.00	¹³ Joint or Infill	¹⁴ Consolidation Code	¹⁵ Order No.
---	-------------------------------	----------------------------------	-------------------------

No allowable will be assigned to this completion until all interests have been consolidated or a non-standard unit has been approved by the division.



¹⁷OPERATOR CERTIFICATION

I hereby certify that the information contained herein is true and complete to the best of my knowledge and belief, and that this organization either owns a working interest or unleased mineral interest in the land including the proposed bottom hole location or has a right to drill this well at this location pursuant to a contract with an owner of such a mineral or working interest, or to a voluntary pooling agreement or a compulsory pooling order heretofore entered by the division.

Signature: *Kay Maddox* Date: 10/15/2020

Printed Name: KAY MADDOX

E-mail Address: kay_maddox@egoresources.com

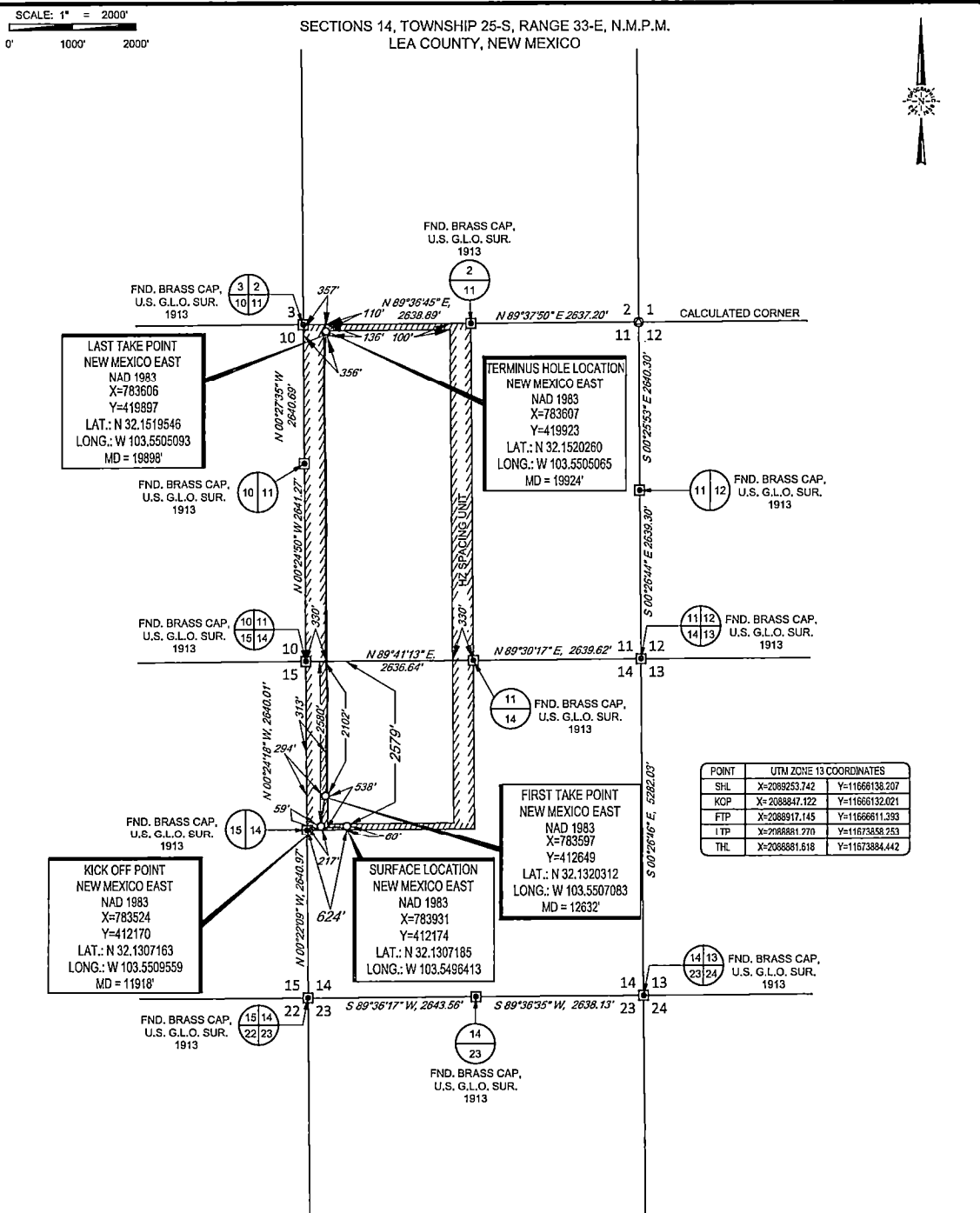
¹⁸SURVEYOR CERTIFICATION

I hereby certify that the well location shown on this plat was plotted from field notes of actual surveys made by me or under my supervision, and that the same is true to the best of my belief.

Date of Survey: 06/19/2018

Signature and Seal of Professional Surveyor: *Michael E. Brown*

Certificate Number: 18329



LAST TAKE POINT
NEW MEXICO EAST
NAD 1983
X=783606
Y=419897
LAT.: N 32.1519546
LONG.: W 103.5505093
MD = 19898'

TERMINUS HOLE LOCATION
NEW MEXICO EAST
NAD 1983
X=783607
Y=419923
LAT.: N 32.1520260
LONG.: W 103.5505065
MD = 19924'

KICK OFF POINT
NEW MEXICO EAST
NAD 1983
X=783524
Y=412170
LAT.: N 32.1307163
LONG.: W 103.5509559
MD = 11918'

SURFACE LOCATION
NEW MEXICO EAST
NAD 1983
X=783931
Y=412174
LAT.: N 32.1307185
LONG.: W 103.5496413

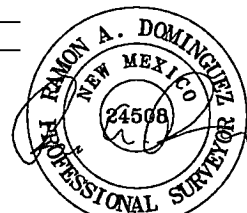
FIRST TAKE POINT
NEW MEXICO EAST
NAD 1983
X=783597
Y=412649
LAT.: N 32.1320312
LONG.: W 103.5507083
MD = 12632'

POINT	UTM ZONE 13 COORDINATES
SHL	X=2089253.742 Y=11666138.207
KOP	X=2088847.122 Y=11666132.021
FTP	X=2088917.145 Y=11666611.393
1TP	X=2086681.770 Y=11673558.253
THL	X=2086681.618 Y=11673884.442

LEASE NAME & WELL NO.: ANTERO 14 FED COM #701H
SECTION 14 TWP 25-S RGE 33-E SURVEY N.M.P.M.
COUNTY LEA STATE NM ELEVATION 3356'
DESCRIPTION 2579' FNL & 624' FWL



1400 EVERMAN PARKWAY, Ste. 146 • FT. WORTH, TEXAS 76140
TELEPHONE: (817) 744-7512 • FAX: (817) 744-7554
TEXAS FIRM REGISTRATION NO. 10042904
WWW.TOPOGRAPHIC.COM



Ramon A. Dominguez, P.S. No. 24508
MAY 08 2020



ANTERO 14 FED COM #701H AS-COMplete	REVISION:
DATE: 05/08/2020	
FILE: AD_ANTERO_14_FED_COM_701H	
DRAWN BY: H.B.	
SHEET: 1 OF 1	

- NOTES:
1. ORIGINAL DOCUMENT SIZE: 8.5" x 14"
 2. ALL BEARINGS, DISTANCES, AND COORDINATE VALUES CONTAINED HEREIN ARE GRID BASED UPON THE NEW MEXICO COORDINATE SYSTEM OF 1983, EAST ZONE, U.S. SURVEY FEET.
 3. THIS WELL LOCATION SHOWN HEREON HAS BEEN SURVEYED ON THE GROUND UNDER MY SUPERVISION AND PREPARED ACCORDING TO THE EVIDENCE FOUND AT THE TIME OF SURVEY, AND DATA PROVIDED BY EOG RESOURCES, INC. THIS CERTIFICATION IS MADE AND LIMITED TO THOSE PERSONS OR ENTITIES SHOWN ON THE FACE OF THIS PLAT AND IS NON-TRANSFERABLE. THIS SURVEY IS CERTIFIED FOR THIS TRANSACTION ONLY.
 4. ADJOINER INFORMATION SHOWN FOR INFORMATIONAL PURPOSES ONLY.



EOG Resources - Midland

Lea County, NM (NAD 83 NME)
Antero 14 Fed Com
#701H
OH

Design: OH

Midland PVA

09 February, 2020





EOG Resources
Midland PVA

Company:	EOG Resources - Midland	Local Co-ordinate Reference:	Well #701H
Project:	Lea County, NM (NAD 83 NME)	TVD Reference:	KB = 22' @ 3383.0usft
Site:	Antero 14 Fed Com	MD Reference:	KB = 22' @ 3383.0usft
Well:	#701H	North Reference:	Grid
Wellbore:	.OH	Survey Calculation Method:	Minimum Curvature
Design:	.OH	Database:	.EDM

Project	Lea County, NM (NAD 83 NME)		
Map System:	US State Plane 1983	System Datum:	Mean Sea Level
Geo Datum:	North American Datum 1983		
Map Zone:	New Mexico Eastern Zone		

Site	Antero 14 Fed Com		
Site Position:		Northing:	412,174.00 usft
From:	Map	Easting:	783,931.00 usft
Position Uncertainty:	0.0 usft	Slot Radius:	13-3/16 "
		Latitude:	32° 7' 50.590 N
		Longitude:	103° 32' 58.705 W
		Grid Convergence:	0.42 °

Well	#701H			
Well Position	+N-S	0.0 usft	Northing:	412,174.00 usft
	+E-W	0.0 usft	Easting:	783,931.00 usft
Position Uncertainty		0.0 usft	Wellhead Elevation:	usft
			Latitude:	32° 7' 50.590 N
			Longitude:	103° 32' 58.705 W
			Ground Level:	3,361.0 usft

Wellbore	OH				
Magnetics	Model Name	Sample Date	Declination (°)	Dip Angle (°)	Field Strength (nT)
	IGRF2015	1/17/2020	6.66	59.95	47,619.86840521

Design	OH				
Audit Notes:					
Version:	1.0	Phase:	ACTUAL	Tie On Depth:	0.0
Vertical Section:	Depth From (TVD) (usft)	+N-S (usft)	+E-W (usft)	Direction (°)	
	0.0	0.0	0.0	357.40	

Survey Program	Date	2/9/2020			
From (usft)	To (usft)	Survey (Wellbore)	Tool Name	Description	
198.0	19,924.0	Total Directional (OH)	EOG MWD+IFR1	MWD + IFR1	



EOG Resources
Midland PVA

Company:	EOG Resources- Midland	Local Co-ordinate Reference:	Well #701H
Project:	Lea County, NM (NAD 83 NME)	TVD Reference:	KB = 22' @ 3383.0usft
Site:	Antero 14 Fed Com	MD Reference:	KB = 22' @ 3383.0usft
Well:	#701H	North Reference:	Grid
Wellbore:	OH	Survey Calculation Method:	Minimum Curvature
Design:	OH	Database:	EDM

MD (usft)	Inc (")	Azi (azimuth) (")	TVD (usft)	NIS (usft)	E/W (usft)	DLeg ("/100usft)	Build ("/100usft)	Turn ("/100usft)	High to Plan (usft)	Right to Plan (usft)
0.0	0.00	0.00	0.0	0.0	0.0	0.00	0.00	0.00	0.0	0.0
198.0	1.00	158.80	198.0	-1.6	0.6	0.51	0.51	0.00	-1.7	0.0
320.0	1.50	152.70	320.0	-4.0	1.7	0.42	0.41	-5.00	-4.4	-0.3
508.0	2.70	150.50	507.8	-10.1	5.1	0.64	0.64	-1.17	-11.2	-0.6
698.0	1.70	147.60	697.7	-16.3	8.8	0.53	-0.53	-1.53	-18.5	-1.4
889.0	0.30	170.90	888.7	-19.2	10.4	0.75	-0.73	12.20	-20.6	7.2
985.0	0.40	216.60	984.7	-19.7	10.2	0.30	0.10	47.60	-9.8	20.0
1,175.0	1.40	228.10	1,174.6	-21.8	8.1	0.53	0.53	6.05	-8.6	21.6
1,270.0	2.70	230.70	1,269.6	-24.0	5.5	1.37	1.37	2.74	-11.0	22.1
1,461.0	3.10	230.30	1,460.3	-30.2	-2.0	0.21	0.21	-0.21	-20.8	22.0
1,651.0	3.70	243.70	1,650.0	-36.2	-11.4	0.52	0.32	7.05	-26.2	27.4
1,842.0	4.80	275.40	1,840.5	-38.1	-24.9	1.33	0.58	16.60	-19.3	40.1
2,032.0	5.10	276.90	2,029.8	-36.4	-41.2	0.17	0.16	0.79	-21.5	38.6
2,223.0	4.80	280.50	2,220.1	-33.9	-57.5	0.23	-0.16	1.88	-16.0	36.0
2,414.0	4.40	282.70	2,410.4	-30.8	-72.5	0.23	-0.21	1.15	-10.6	31.8
2,604.0	4.00	284.60	2,599.9	-27.6	-86.0	0.22	-0.21	1.00	-4.4	26.6
2,795.0	5.00	283.50	2,790.3	-23.9	-100.6	0.53	0.52	-0.58	-0.7	21.0
2,985.0	6.90	276.30	2,979.3	-20.8	-120.0	1.07	1.00	-3.79	-3.3	16.7
3,176.0	6.10	277.70	3,169.1	-18.1	-141.4	0.43	-0.42	0.73	-4.8	13.6
3,367.0	6.00	278.80	3,359.0	-15.2	-161.3	0.08	-0.05	0.58	-5.1	10.1
3,557.0	7.70	259.60	3,547.7	-16.0	-183.7	1.49	0.89	-10.11	-10.5	7.5
3,748.0	7.80	259.10	3,736.9	-20.8	-209.0	0.06	0.05	-0.26	-16.7	10.3
3,939.0	7.20	263.80	3,926.3	-24.5	-233.6	0.45	-0.31	2.46	-20.8	14.0
4,130.0	6.50	278.80	4,116.0	-24.2	-256.2	1.00	-0.37	7.85	-19.2	18.2
4,225.0	5.00	277.90	4,210.5	-22.8	-265.6	1.58	-1.58	-0.95	-19.2	16.0
4,320.0	1.90	274.20	4,305.3	-22.1	-271.3	3.27	-3.26	-3.89	-16.0	13.4
4,416.0	1.60	77.30	4,401.3	-21.7	-271.6	3.61	-0.31	169.90	9.5	-9.6



EOG Resources
Midland PVA

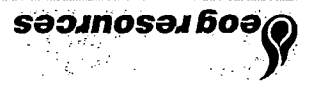
Company:	EOG Resources - Midland	Local Co-ordinate Reference:	Well #701H
Project:	Lea County, NM (NAD 83 NME)	TVD Reference:	KB = 22' @ 3383.0usft
Site:	Antero 14 Fed Com	MD Reference:	KB = 22' @ 3383.0usft
Well:	#701H	North Reference:	Grid
Wellbore:	OH	Survey Calculation Method:	Minimum Curvature
Design:	OH	Database:	EDM

MD (usft)	Inc (°)	Azi (azimuth) (°)	TVD (usft)	N/S (usft)	E/W (usft)	DLeg (°/100usft)	Build (°/100usft)	Turn (°/100usft)	High to Plan (usft)	Right to Plan (usft)
4,607.0	2.50	50.30	4,592.2	-18.4	-265.8	0.68	0.47	-14.14	-9.4	-17.5
4,702.0	2.10	285.00	4,687.1	-16.7	-265.8	4.30	-0.42	-131.89	28.7	-2.3
4,732.0	3.10	272.80	4,717.1	-16.5	-267.2	3.79	3.33	-40.67	30.3	3.4
4,797.0	2.50	250.50	4,782.0	-16.9	-270.3	1.90	-0.92	-34.31	30.2	16.0
4,893.0	3.00	247.80	4,877.9	-18.5	-274.6	0.54	0.52	-2.81	34.3	20.7
4,988.0	3.30	237.00	4,972.8	-20.9	-279.2	0.70	0.32	-11.37	32.8	31.1
5,179.0	3.40	263.70	5,163.4	-24.6	-289.4	0.81	0.05	13.98	42.6	16.4
5,370.0	3.80	264.80	5,354.1	-25.8	-301.3	0.21	0.21	0.58	31.4	15.7
5,560.0	4.30	268.60	5,543.6	-26.5	-314.7	0.30	0.26	2.00	18.9	14.0
5,751.0	4.50	269.50	5,734.0	-26.7	-329.4	0.11	0.10	0.47	4.5	13.8
5,942.0	2.80	253.70	5,924.6	-28.1	-341.4	1.03	-0.89	-8.27	-11.3	12.4
6,132.0	1.70	282.80	6,114.5	-28.8	-348.6	0.81	-0.58	15.21	-10.8	18.6
6,323.0	1.60	268.00	6,305.4	-28.3	-354.0	0.23	-0.05	-7.64	-20.5	14.6
6,513.0	1.30	280.90	6,495.4	-28.0	-358.8	0.23	-0.16	6.79	-21.5	19.4
6,704.0	2.50	356.70	6,686.3	-23.4	-361.1	1.32	0.63	39.69	8.8	27.7
6,895.0	2.70	3.40	6,877.1	-14.7	-361.1	0.19	0.10	3.51	3.3	27.0
7,086.0	2.20	7.20	7,067.9	-6.6	-360.4	0.28	-0.26	1.99	-3.0	27.0
7,277.0	2.00	7.90	7,258.8	0.3	-359.5	0.11	-0.10	0.37	-9.7	27.0
7,467.0	1.70	8.00	7,448.7	6.4	-358.6	0.16	-0.16	0.05	-15.8	27.1
7,658.0	1.10	359.20	7,639.6	11.0	-358.2	0.33	-0.31	-4.61	-24.4	23.9
7,680.9	1.05	355.31	7,662.5	11.5	-358.3	0.38	-0.21	-16.99	-26.4	22.2
Brushy Top(Ant 14 FC #701H)										
7,849.0	0.90	317.80	7,830.6	14.0	-359.3	0.38	-0.09	-22.31	-37.0	0.6
8,040.0	0.70	5.40	8,021.6	16.3	-360.2	0.35	-0.10	24.92	-26.7	28.8
8,231.0	1.00	21.50	8,212.6	19.0	-359.5	0.20	0.16	8.43	-20.4	35.4
8,421.0	0.40	55.60	8,402.5	20.9	-358.3	0.37	-0.32	17.95	0.9	41.7
8,612.0	0.30	138.20	8,593.5	20.9	-357.4	0.25	-0.05	43.25	40.9	5.1

MD	Inc	Azi (azimuth)	TVD	N/S	EW	Dleg	Build	Turn	High to Plan	Right to Plan
(usft)	(")	(")	(usft)	(usft)	(usft)	(/100usft)	(/100usft)	(/100usft)	(usft)	(usft)
8,803.0	0.80	197.30	8,784.5	19.2	-357.5	0.36	0.26	30.94	23.8	-32.0
8,994.0	1.00	217.90	8,975.5	16.7	-358.9	0.20	0.10	10.79	8.1	-37.9
9,184.0	0.80	249.70	9,165.5	14.9	-361.2	0.28	-0.11	16.74	-15.8	-35.6
9,375.0	0.80	266.10	9,356.5	14.8	-363.7	0.26	0.00	19.06	-36.2	-18.5
9,566.0	1.00	311.00	9,547.4	16.3	-366.2	0.23	0.10	13.04	-43.5	-0.9
9,756.0	2.50	45.40	9,737.4	20.3	-364.5	1.45	0.79	49.68	-1.6	45.1
9,947.0	1.00	69.00	9,928.3	23.8	-360.0	0.86	-0.79	12.36	11.1	43.7
10,137.0	0.60	148.10	10,118.3	23.5	-357.9	0.56	-0.21	41.63	43.7	-1.0
10,328.0	1.40	248.50	10,309.2	21.8	-359.6	0.85	0.42	52.57	-11.0	-41.8
10,519.0	2.50	244.90	10,500.1	19.2	-365.5	0.58	0.58	-1.88	-14.9	-42.5
10,709.0	2.00	273.40	10,690.0	17.6	-372.6	0.64	-0.26	15.00	-40.3	-28.3
10,900.0	1.10	240.60	10,880.9	16.9	-377.5	0.64	-0.47	-17.17	-23.2	-47.4
11,091.0	1.70	244.20	11,071.9	14.8	-381.7	0.32	0.31	1.88	-30.8	-45.8
11,281.0	1.80	226.70	11,261.8	11.5	-386.4	0.28	0.05	-9.21	-21.3	-53.8
11,472.0	2.10	246.40	11,452.7	8.1	-391.8	0.38	0.16	10.31	-44.5	-42.4
11,663.0	3.10	227.60	11,643.5	3.2	-398.8	0.68	0.52	-9.84	-36.9	-55.7
11,745.0	2.90	220.80	11,725.4	0.1	-401.8	0.50	-0.24	-8.29	-34.3	-59.9
11,869.0	2.40	220.90	11,849.2	-4.2	-405.5	0.40	-0.40	0.08	-40.2	-59.8
11,918.0	3.32	327.88	11,898.2	-3.8	-406.9	9.44	1.87	218.33	-46.5	56.9
11,985.0	7.50	345.00	11,945.0	0.3	-408.5	9.44	8.90	36.42	-31.9	68.6
12,060.0	6.00	282.20	12,035.0	29.0	-407.7	22.48	21.79	22.11	-24.8	77.6
12,155.0	42.00	10.40	12,112.5	82.8	-399.6	14.76	14.53	4.63	-48.8	78.2
12,251.0	52.20	8.90	12,177.8	152.1	-387.9	10.68	10.62	-1.56	-81.0	71.8
12,317.4	54.51	8.40	12,217.4	204.7	-379.9	3.52	3.47	-0.75	-97.5	65.9
12,346.0	55.50	8.20	12,233.8	227.9	-376.5	3.52	3.48	-0.72	-101.7	63.3

Company: EOG Resources - Midland
Project: Lea County, NM (MAD 83 NME)
Site: Antero 14 Fed Com
Well: #701H
Wellbore: OH
Design: OH

Local Co-ordinate Reference: Well #701H
TVD Reference: KB = 22 @ 3383.0usft
MD Reference: KB = 22 @ 3383.0usft
North Reference: Gnd
Survey Calculation Method: Minimum Curvature
Database: EDM





EOG Resources
Midland PVA

Company:	EOG Resources- Midland	Local Co-ordinate Reference:	Well #701H
Project:	Lea County, NM (NAD 83 NME)	TVD Reference:	KB = 22' @ 3383.0usft
Site:	Antero 14 Fed Com	MD Reference:	KB = 22' @ 3383.0usft
Well:	#701H	North Reference:	Grid
Wellbore:	OH	Survey Calculation Method:	Minimum Curvature
Design:	OH	Database:	EDM

MD (usft)	Inc (")	Azi (azimuth) (")	TVD (usft)	N/S (usft)	E/W (usft)	DLeg ("/100usft)	Build ("/100usft)	Turn ("/100usft)	High to Plan (usft)	Right to Plan (usft)	
12,441.0	61.60	10.60	12,283.4	307.8	-363.2	6.77	6.42	2.53	-104.0	55.5	
12,536.0	61.90	9.70	12,328.3	390.2	-348.5	0.89	0.32	-0.95	-88.3	44.5	
12,555.8	62.75	9.74	12,337.5	407.5	-345.5	4.27	4.27	0.21	-82.3	42.5	
FTP Crossing, MD:12555.8', TVD:12337.5', N/S:407.5', E/W:-345.5', INC:62.75'											
12,632.0	66.00	9.90	12,370.5	475.2	-333.8	4.27	4.27	0.21	-53.8	34.4	
12,727.0	71.20	9.80	12,405.1	562.3	-318.7	5.47	5.47	-0.11	-19.7	20.8	
12,822.0	77.70	2.60	12,430.6	653.2	-308.9	10.00	6.84	-7.58	5.0	9.8	
12,917.0	88.00	356.90	12,442.4	747.3	-309.3	12.36	10.84	-6.00	17.0	9.6	
13,012.0	89.80	359.60	12,444.3	842.2	-312.2	3.42	1.89	2.84	19.0	11.8	
13,137.0	90.30	357.60	12,444.2	967.1	-315.3	1.65	0.40	-1.60	19.1	13.9	
13,232.0	91.20	358.40	12,442.9	1,062.1	-318.6	1.27	0.95	0.84	18.0	16.5	
13,327.0	91.30	359.50	12,440.8	1,157.0	-320.4	1.16	0.11	1.16	16.1	17.6	
13,401.0	90.20	0.20	12,439.9	1,231.0	-320.5	1.76	-1.49	0.95	15.3	17.2	
13,518.0	89.70	1.60	12,440.0	1,348.0	-318.7	1.27	-0.43	1.20	15.6	14.5	
13,614.0	88.20	1.90	12,441.7	1,443.9	-315.8	1.59	-1.56	0.31	17.6	10.8	
13,709.0	88.90	2.20	12,444.1	1,538.8	-312.4	0.80	0.74	0.32	20.1	6.7	
13,805.0	89.90	1.60	12,445.1	1,634.8	-309.2	1.21	1.04	-0.62	21.3	2.8	
13,913.0	90.30	1.70	12,445.0	1,742.7	-306.1	0.38	0.37	0.09	21.3	-1.1	
13,933.0	88.30	1.10	12,445.2	1,762.7	-305.6	10.44	-10.00	-3.00	21.6	-1.7	
13,995.0	89.70	0.80	12,446.3	1,824.7	-304.6	2.31	2.26	-0.48	22.8	-3.2	
14,091.0	92.00	1.70	12,444.9	1,920.7	-302.5	2.57	2.40	0.94	21.6	-6.0	
14,186.0	89.00	2.80	12,444.0	2,015.6	-299.7	3.36	-3.16	1.16	20.9	-10.4	
14,281.0	89.40	357.60	12,445.4	2,110.5	-298.4	5.49	0.42	-5.47	22.4	-11.5	
14,377.0	89.40	357.40	12,446.4	2,206.4	-302.6	0.21	0.00	-0.21	23.6	-8.0	
14,472.0	88.60	357.40	12,448.0	2,301.3	-306.9	0.84	-0.84	0.00	25.4	-4.4	
14,567.0	89.60	355.60	12,449.5	2,396.1	-312.7	2.17	1.05	-1.89	27.1	0.7	
14,612.0	90.50	355.80	12,449.5	2,441.0	-316.1	2.05	2.00	0.44	27.1	3.7	



EOG Resources
Midland PVA

Company:	EOG Resources - Midland	Local Co-ordinate Reference:	Well #701H
Project:	Lea County, NM (NAD 83 NME)	TVD Reference:	KB = 22' @ 3383.0usft
Site:	Antero 14 Fed Com	MD Reference:	KB = 22' @ 3383.0usft
Well:	#701H	North Reference:	Grid
Wellbore:	OH	Survey Calculation Method:	Minimum Curvature
Design:	OH	Database:	EDM

MD (usft)	Inc (°)	Azi (azimuth) (°)	TVD (usft)	N/S (usft)	E/W (usft)	DLeg (°/100usft)	Build (°/100usft)	Turn (°/100usft)	High to Plan (usft)	Right to Plan (usft)
14,760.0	92.90	358.80	12,445.1	2,588.8	-323.1	2.60	1.62	2.03	23.0	9.6
14,802.7	93.12	358.62	12,442.8	2,631.4	-324.0	0.67	0.53	-0.42	20.8	10.3
TGT#1(Ant 14 FC #701H)										
14,855.0	93.40	358.40	12,439.9	2,683.6	-325.4	0.67	0.53	-0.42	18.0	11.2
14,951.0	93.60	358.70	12,434.0	2,779.4	-327.8	0.38	0.21	0.31	12.5	12.9
15,046.0	91.40	359.60	12,429.9	2,874.3	-329.2	2.50	-2.32	0.95	8.6	13.6
15,142.0	91.30	0.10	12,427.6	2,970.2	-329.5	0.53	-0.10	0.52	6.6	13.2
15,237.0	91.30	359.60	12,425.4	3,065.2	-329.7	0.53	0.00	-0.53	4.8	12.7
15,333.0	91.60	0.30	12,423.0	3,161.2	-329.8	0.79	0.31	0.73	2.6	12.1
15,428.0	91.30	0.40	12,420.6	3,256.1	-329.2	0.33	-0.32	0.11	0.5	10.8
15,524.0	91.80	0.70	12,418.0	3,352.1	-328.3	0.61	0.52	0.31	-1.8	9.1
15,619.0	90.30	1.60	12,416.3	3,447.1	-326.4	1.84	-1.58	0.95	-3.2	6.5
15,715.0	90.10	2.60	12,415.9	3,543.0	-322.9	1.06	-0.21	1.04	-3.2	2.3
15,810.0	88.00	1.70	12,417.5	3,637.9	-319.3	2.40	-2.21	-0.95	-1.4	-2.0
16,001.0	88.90	359.50	12,422.7	3,828.8	-317.3	1.24	0.47	-1.15	4.4	-5.4
16,097.0	86.60	0.30	12,426.4	3,924.7	-317.5	2.54	-2.40	0.83	8.4	-6.0
16,192.0	88.20	359.20	12,430.8	4,019.6	-317.9	2.04	1.68	-1.16	13.0	-6.3
16,287.0	90.60	359.40	12,431.7	4,114.6	-319.0	2.54	2.53	0.21	14.3	-5.8
16,383.0	91.00	359.50	12,430.4	4,210.6	-320.0	0.43	0.42	0.10	13.3	-5.6
16,420.4	91.63	359.78	12,429.5	4,248.0	-320.2	1.84	1.68	0.74	12.5	-5.6
TGT#2(Ant 14 FC #701H)										
16,478.0	92.60	0.20	12,427.4	4,305.6	-320.2	1.84	1.68	0.74	10.3	-6.1
16,573.0	91.10	1.30	12,424.4	4,400.5	-319.0	1.96	-1.58	1.16	7.1	-8.0
16,669.0	89.50	1.20	12,423.9	4,496.5	-316.9	1.67	-1.67	-0.10	6.3	-10.8
16,764.0	90.20	1.80	12,424.1	4,591.4	-314.4	0.97	0.74	0.63	6.4	-14.0
16,860.0	92.00	358.50	12,422.3	4,687.4	-314.1	3.91	1.87	-3.44	4.3	-15.0
16,955.0	91.30	358.20	12,419.5	4,782.3	-316.9	0.80	-0.74	-0.32	1.3	-13.0



EOG Resources
Midland PVA

Company:	EOG Resources - Midland	Local Co-ordinate Reference:	Well #701H
Project:	Lea County, NM (NAD 83 NME)	TVD Reference:	KB = 22' @ 3383.0usft
Site:	Antero 14 Fed Com	MD Reference:	KB = 22' @ 3383.0usft
Well:	#701H	North Reference:	Grid
Wellbore:	OH	Survey Calculation Method:	Minimum Curvature
Design:	OH	Database:	EDM

MD (usft)	Inc (°)	Azi (azimuth) (°)	TVD (usft)	N/S (usft)	E/W (usft)	DLeg (°/100usft)	Build (°/100usft)	Turn (°/100usft)	High to Plan (usft)	Right to Plan (usft)
17,051.0	89.90	0.20	12,418.5	4,878.3	-318.2	2.54	-1.46	2.08	0.1	-12.3
17,072.0	88.10	0.10	12,418.9	4,899.3	-318.2	8.58	-8.57	-0.48	0.4	-12.5
17,146.0	84.40	1.10	12,423.7	4,973.1	-317.4	5.18	-5.00	1.35	5.1	-13.9
17,241.0	84.60	0.20	12,432.8	5,067.7	-316.3	0.97	0.21	-0.95	14.0	-15.7
17,337.0	88.80	359.40	12,438.4	5,163.5	-316.7	4.45	4.37	-0.83	19.3	-16.0
17,429.0	89.80	0.00	12,439.5	5,255.5	-317.1	1.27	1.09	0.65	20.2	-16.2
17,525.0	90.00	359.80	12,439.6	5,351.5	-317.3	0.29	0.21	-0.21	20.2	-16.8
17,620.0	89.60	358.80	12,440.0	5,446.5	-318.5	1.13	-0.42	-1.05	20.3	-16.3
17,715.0	87.10	0.50	12,442.7	5,541.4	-319.0	3.18	-2.63	1.79	22.8	-16.5
17,811.0	87.80	359.90	12,447.0	5,637.3	-318.7	0.96	0.73	-0.62	26.9	-17.5
17,906.0	88.20	356.00	12,450.3	5,732.2	-322.1	4.12	0.42	-4.11	30.0	-14.8
18,002.0	92.80	352.30	12,449.5	5,827.6	-331.9	6.15	4.79	-3.85	28.9	-5.7
18,097.0	88.30	359.40	12,448.5	5,922.3	-338.7	8.85	-4.74	7.47	27.8	0.4
18,192.0	89.50	4.30	12,450.4	6,017.2	-335.7	5.31	1.26	5.16	29.4	-3.4
18,288.0	87.40	359.60	12,453.0	6,113.1	-332.4	5.36	-2.19	-4.90	31.8	-7.4
18,383.0	89.40	355.10	12,455.6	6,207.9	-336.8	5.18	2.11	-4.74	34.2	-3.7
18,478.0	90.70	356.70	12,455.5	6,302.7	-343.6	2.17	1.37	1.68	33.9	2.4
18,573.0	93.10	357.30	12,452.4	6,397.5	-348.6	2.60	2.53	0.63	30.5	6.7
18,637.1	90.76	358.70	12,450.2	6,461.5	-350.8	4.25	-3.65	2.19	28.2	8.4
TGT#3(Ant 14 FC #701H)										
18,669.0	89.60	359.40	12,450.1	6,493.4	-351.3	4.25	-3.65	2.19	28.0	8.7
18,765.0	90.20	359.40	12,450.3	6,589.4	-352.3	0.62	0.62	0.00	27.8	9.0
18,860.0	89.90	358.00	12,450.2	6,684.3	-354.5	1.51	-0.32	-1.47	27.4	10.4
18,955.0	90.20	358.10	12,450.1	6,779.3	-357.7	0.33	0.32	0.11	26.9	13.0
19,050.0	92.10	2.30	12,448.2	6,874.2	-357.4	4.85	2.00	4.42	24.6	11.9
19,145.0	86.40	1.80	12,449.5	6,969.1	-354.0	6.02	-6.00	-0.53	25.5	7.8
19,240.0	88.50	2.30	12,453.7	7,064.0	-350.6	2.27	2.21	0.53	29.4	3.7



Lea County, NM (NAD 83 NME)
Antero 14 Fed Com #701H
Plan #1

PROJECT DETAILS: Lea County, NM (NAD 83 NME)
 Geodetic System: US State Plane 1983
 Datum: North American Datum 1983
 Ellipsoid: GRS 1980
 Zone: New Mexico Eastern Zone
 System Datum: Mean Sea Level

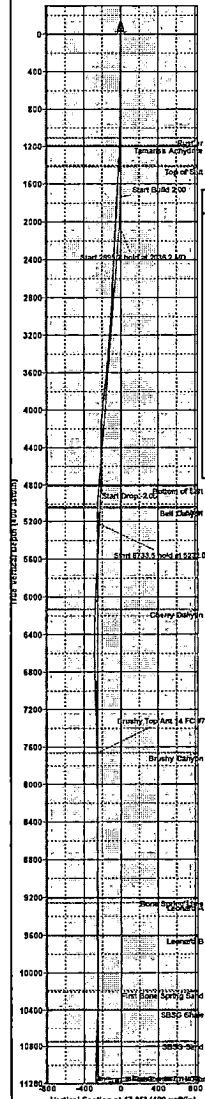
WELL DETAILS: #701H

KB = 22' @ 3383.0usft	3351.0
Northing	412174.00
Easting	763931.00
Latitude	32° 7' 50.550 N
Longitude	103° 52' 58.705 W

Azimuths to Grid North
 True North: -0.42°
 Magnetic North: 6.24°

Magnetic Field
 Strength: 47619.9uT
 Dip Angle: 59.93°
 Date: 1/17/2020
 Model: IGRF2015

To convert a Magnetic Direction to a Grid Direction, Add 6.24°
 To convert a Magnetic Direction to a True Direction, Add 6.66° East
 To convert a True Direction to a Grid Direction, Subtract 0.42°



SECTION DETAILS

Sec	MD	Inc	Azi	TVD	+N/-S	+E/-W	Dleg	TFace	Vsect	Target
1	0.0	0.00	0.00	0.0	0.0	0.0	0.00	0.00	0.0	
2	1736.0	0.00	0.00	1736.0	0.0	0.0	0.00	0.00	0.0	
3	2036.2	6.00	267.77	2035.6	-0.6	-15.7	2.00	267.77	0.1	
4	4931.8	6.00	267.77	4915.4	-12.4	-318.3	0.00	0.00	2.1	
5	5232.0	0.00	0.00	5215.0	-13.0	-334.0	2.00	180.00	2.2	
6	11965.5	0.00	0.00	11948.5	-13.0	-334.0	0.00	0.00	2.2	
7	12716.3	90.10	3.75	12426.0	464.3	-302.7	12.00	3.75	477.5	
8	12855.5	90.10	359.57	12425.7	603.4	-298.7	3.00	-89.93	616.3	
9	14882.7	90.10	359.57	12422.0	2630.5	-313.8	0.00	0.00	2642.0	TGT#1(Ant 14 FC #701H)
10	14886.3	90.18	359.57	12422.0	2634.1	-313.8	2.00	-1.70	2645.6	
11	16499.8	90.18	359.57	12417.0	4247.6	-325.8	0.00	0.00	4258.0	TGT#2(Ant 14 FC #701H)
12	16515.2	89.87	359.57	12417.0	4263.0	-326.0	2.00	180.00	4273.4	
13	18713.4	89.87	359.57	12422.0	6461.1	-342.4	0.00	0.00	6470.0	TGT#3(Ant 14 FC #701H)
14	18718.0	89.78	359.57	12422.0	6465.7	-342.4	2.00	-180.00	6474.6	
15	20001.4	89.78	359.57	12427.0	7749.0	-352.0	0.00	0.00	7757.0	PBHL(Ant 14 FC #701H)

CASING DETAILS

No casing data is available

WELLBORE TARGET DETAILS (MAP CO-ORDINATES)

Name	TVD	+N/-S	+E/-W	Northing	Easting
Brushy Top(Ant 14 FC #701H)	7653.0	-13.0	-334.0	412161.00	763597.00
TGT#2(Ant 14 FC #701H)	12417.0	4247.6	-325.8	416421.60	763605.16
TGT#1(Ant 14 FC #701H)	12422.0	2630.5	-313.8	414804.50	763617.25
TGT#3(Ant 14 FC #701H)	12422.0	6461.1	-342.4	418635.10	763586.62
FTP(Ant 14 FC #701H)	12427.0	37.0	-294.0	412211.00	763637.00
PBHL(Ant 14 FC #701H)	12427.0	7749.0	-352.0	416923.00	763579.00

