

District I  
1625 N. French Dr., Hobbs, NM 88240  
Phone: (575) 393-6161 Fax: (575) 393-0720  
District II  
811 S. First St., Artesia, NM 88210  
Phone: (575) 748-1283 Fax: (575) 748-9720  
District III  
1000 Rio Brazos Road, Aztec, NM 87410  
Phone: (505) 334-6178 Fax: (505) 334-6170  
District IV  
1220 S. St. Francis Dr., Santa Fe, NM 87505  
Phone: (505) 476-3460 Fax: (505) 476-3462

State of New Mexico  
Energy, Minerals & Natural Resources  
Department  
OIL CONSERVATION DIVISION  
1220 South St. Francis Dr.  
Santa Fe, NM 87505

FORM C-102

Revised August 1, 2011

Submit one copy to appropriate

District Office

☐ AMENDED REPORT

## WELL LOCATION AND ACREAGE DEDICATION PLAT

<sup>1</sup> API Number <b>30-025-46737</b>	<sup>2</sup> Pool Code <b>98094</b>	<sup>3</sup> Pool Name <b>BOBCAT DRAW; UPPER WOLFCAMP</b>
<sup>4</sup> Property Code <b>326481</b>	<sup>5</sup> Property Name <b>ANTERO 14 FED COM</b>	
<sup>7</sup> GRID No. <b>7377</b>	<sup>8</sup> Operator Name <b>EOG RESOURCES, INC.</b>	<sup>6</sup> Well Number <b>#703H</b>
		<sup>9</sup> Elevation <b>3362'</b>

<sup>10</sup>Surface Location

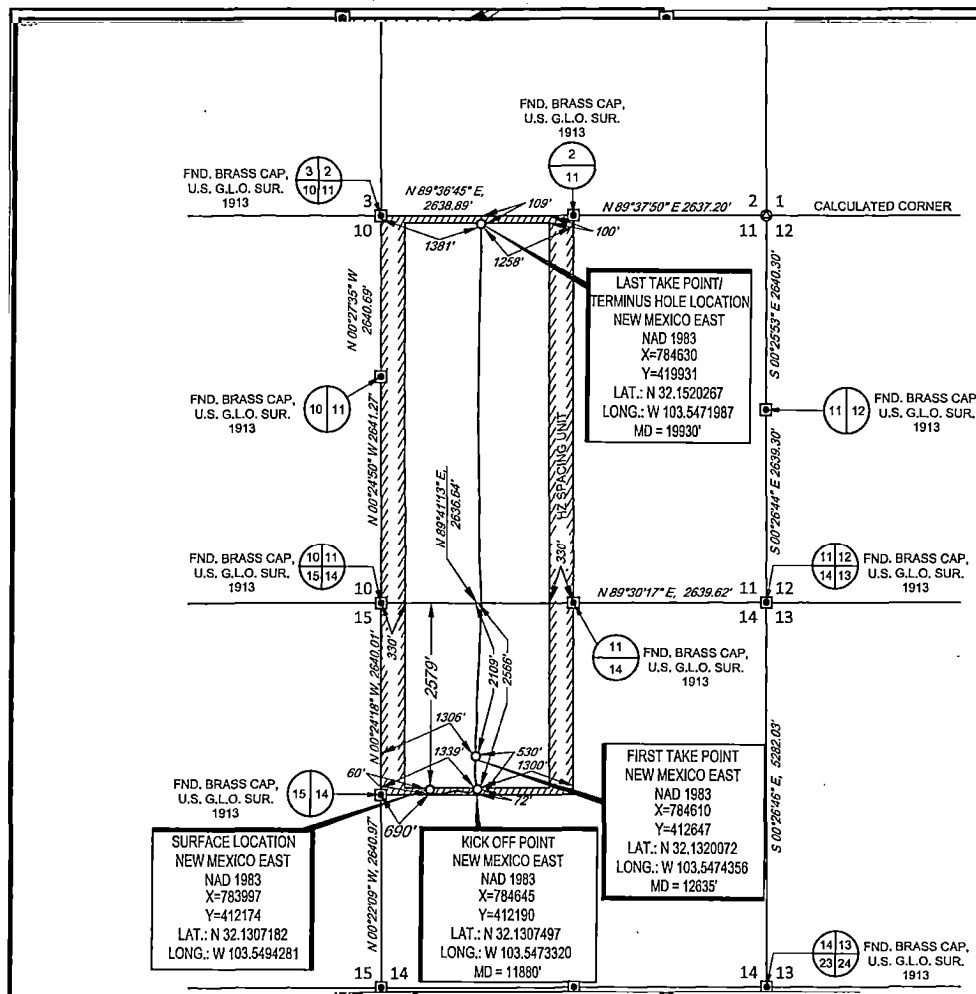
UL or lot no.	Section	Township	Range	Lot Idn	Feet from the	North/South line	Feet from the	East/West line	County
<b>E</b>	<b>14</b>	<b>25-S</b>	<b>33-E</b>	<b>-</b>	<b>2579'</b>	<b>NORTH</b>	<b>690'</b>	<b>WEST</b>	<b>LEA</b>

<sup>11</sup>Bottom Hole Location If Different From Surface

UL or lot no.	Section	Township	Range	Lot Idn	Feet from the	North/South line	Feet from the	East/West line	County
<b>C</b>	<b>11</b>	<b>25-S</b>	<b>33-E</b>	<b>-</b>	<b>109'</b>	<b>NORTH</b>	<b>1381'</b>	<b>WEST</b>	<b>LEA</b>

<sup>12</sup> Dedicated Acres <b>480.00</b>	<sup>13</sup> Joint or Infill	<sup>14</sup> Consolidation Code	<sup>15</sup> Order No.
--	-------------------------------	----------------------------------	-------------------------

No allowable will be assigned to this completion until all interests have been consolidated or a non-standard unit has been approved by the division.

<sup>17</sup>OPERATOR CERTIFICATION

I hereby certify that the information contained herein is true and complete to the best of my knowledge and belief, and that this organization either owns a working interest or unleased mineral interest in the land including the proposed bottom hole location or has a right to drill this well at this location pursuant to a contract with an owner of such a mineral or working interest, or to a voluntary pooling agreement or a compulsory pooling order heretofore entered by the division.

*Kay Maddox* 10/15/2020  
Signature Date

KAY MADDOX

Printed Name

kay\_maddox@eogresources.com  
E-mail Address

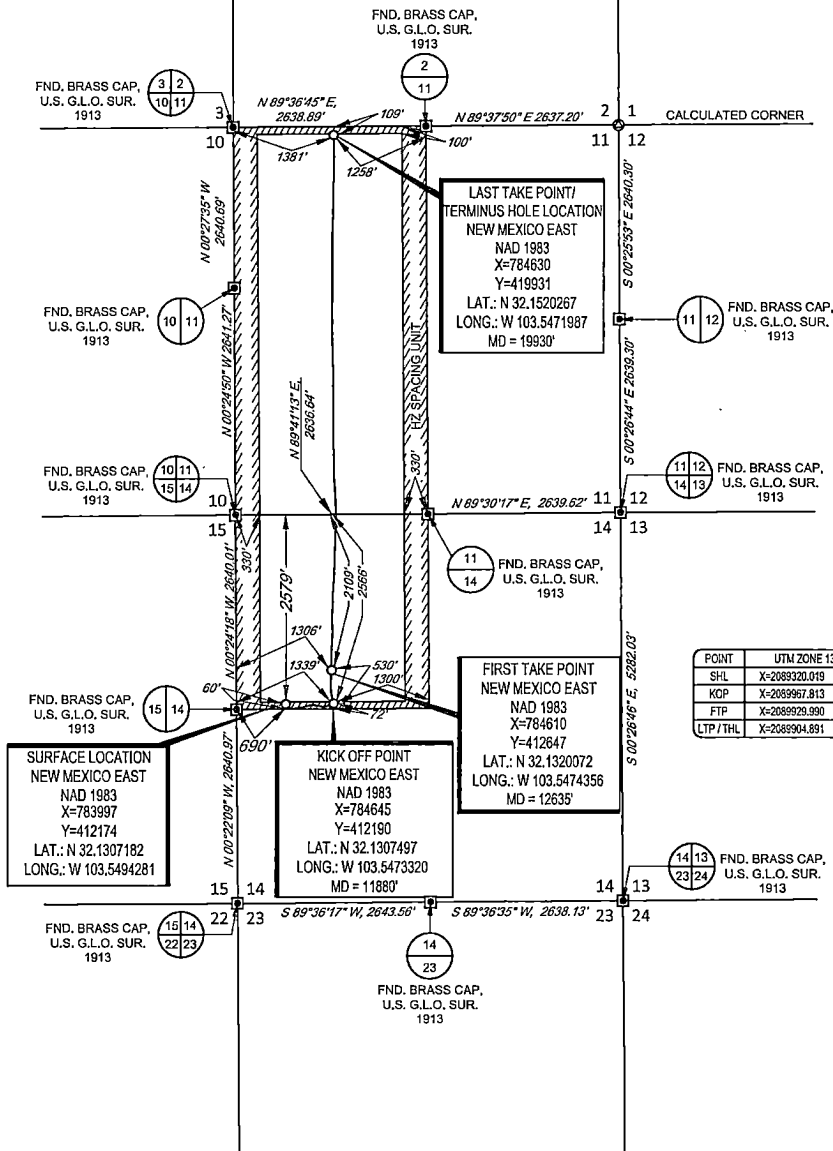
<sup>18</sup>SURVEYOR CERTIFICATION

I hereby certify that the well location shown on this plat was plotted from field notes of actual surveys made by me or under my supervision, and that the same is true to the best of my belief.

06/19/2018  
Date of Survey  
Signature and Seal of Professional Surveyor  
MICHAEL E. BROWN  
NEW MEXICO  
18329  
PROFESSIONAL SURVEYOR  
Certificate Number

SCALE: 1" = 2000'  
0' 1000' 2000'

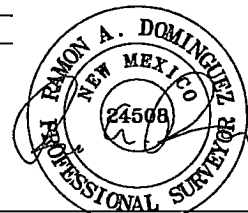
SECTIONS 14, TOWNSHIP 25-S, RANGE 33-E, N.M.P.M.  
LEA COUNTY, NEW MEXICO



POINT	UTM ZONE 13 COORDINATES
SHL	X=2089320.019 Y=11686138.948
KCP	X=2089967.813 Y=11686158.956
FTP	X=2089929.390 Y=11686215.664
LTP/THL	X=2089904.691 Y=11673898.589

LEASE NAME & WELL NO.: ANTERO 14 FED COM #703H  
SECTION 14 TWP 25-S RGE 33-E SURVEY N.M.P.M.  
COUNTY LEA STATE NM ELEVATION 3356'  
DESCRIPTION 2579' FNL & 690' FWL

**TOPOGRAPHIC**  
LOYALTY INNOVATION LEGACY  
1400 EVERMAN PARKWAY, Ste. 146 • FT. WORTH, TEXAS 76140  
TELEPHONE: (817) 744-7512 • FAX: (817) 744-7554  
TEXAS FIRM REGISTRATION NO. 10042804  
WWW.TOPOGRAPHIC.COM



Ramon A. Dominguez, P.S. No. 24508  
MAY 08 2020

**eoq resources, inc.**

ANTERO 14 FED COM #703H AS-COMplete  DATE: 05/08/2020 FILE: AD_ANTERO_14_FED_COM_703H DRAWN BY: H.B. SHEET: 1 OF 1	REVISION:	NOTES:
		1. ORIGINAL DOCUMENT SIZE: 8.5" X 14"
		2. ALL BEARINGS, DISTANCES, AND COORDINATE VALUES CONTAINED HEREIN ARE GRID BASED UPON THE NEW MEXICO COORDINATE SYSTEM OF 1983, EAST ZONE, U.S. SURVEY FEET.
		3. THIS WELL LOCATION SHOWN HEREON HAS BEEN SURVEYED ON THE GROUND UNDER MY SUPERVISION AND PREPARED ACCORDING TO THE EVIDENCE FOUND AT THE TIME OF SURVEY, AND DATA PROVIDED BY EOG RESOURCES, INC. THIS CERTIFICATION IS MADE AND LIMITED TO THOSE PERSONS OR ENTITIES SHOWN ON THE FACE OF THIS PLAT AND IS NON-TRANSFERABLE. THIS SURVEY IS CERTIFIED FOR THIS TRANSACTION ONLY.
		4. ADJOINER INFORMATION SHOWN FOR INFORMATIONAL PURPOSES ONLY.



## **EOG Resources - Midland**

Lea County, NM (NAD 83 NME)

Antero 14 Fed Com

#703H

OH

Design: OH

## **Midland PVA**

16 March, 2020



**EOG Resources**  
Midland PVA

Company:	EOG Resources - Midland	Local Co-ordinate Reference:	Well #703H
Project:	Lea County, NM (NAD 83 NME)	TVD Reference:	KB = 22' @ 3384.0usft
Site:	Antero 14 Fed Com	MD Reference:	KB = 22' @ 3384.0usft
Well:	#703H	North Reference:	Grid
Wellbore:	OH	Survey Calculation Method:	Minimum Curvature
Design:	OH	Database:	EDM

Project	Lea County, NM (NAD 83.NME)		
Map System:	US State Plane 1983	System Datum:	Mean Sea Level
Geo Datum:	North American Datum 1983		
Map Zone:	New Mexico Eastern Zone		

Site	Antero 14 Fed Com		
Site Position:		Northing:	412,174.00 usft
From:	Map	Easting:	783,931.00 usft
Position Uncertainty:	0.0 usft	Slot Radius:	13-3/16 "
		Latitude:	32° 7' 50.590 N
		Longitude:	103° 32' 58.705 W
		Grid Convergence:	0.42 °

Well	#703H		
Well Position	+N-S	0.0 usft	Northing:
	+E-W	0.0 usft	Easting:
Position Uncertainty	0.0 usft		Wellhead Elevation:
			Ground Level:

Wellbore:	OH		
Magnetics	Model Name	Sample Date	Declination
			(°)
			Dip Angle
			(°)
			Field Strength
			(nT)
	IGRF2015	2/2/2020	6.65
			59.95
			47,615.39738858

Design	OH		
Audit Notes:			
Version:	1.0	Phase:	ACTUAL
		Tie On Depth:	0.0
Vertical Section:	Depth From (TVD)	+N-S	+E-W
	(usft)	(usft)	(usft)
	0.0	0.0	0.0
			Direction
			(°)
			4.48

Survey Program	Date 3/16/2020		
From	To	Survey (Wellbore)	Tool Name
(usft)	(usft)		Description
169.1	19,930.0	Total MWD (OH)	EOG MWD+IFR1
			MWD + IFR1



EOG Resources  
Midland PVA

Company:	EOG Resources - Midland	Local Co-ordinate Reference:	Well #703H
Project:	Lea County, NM (NAD 83 NME)	TVD Reference:	KB = 22' @ 3384.0usft
Site:	Antero 14 Fed Com	MD Reference:	KB = 22' @ 3384.0usft
Well:	#703H	North Reference:	Grid
Wellbore:	OH	Survey Calculation Method:	Minimum Curvature
Design:	OH	Database:	EDM

MD (usft)	Inc (°)	Azi (azimuth) (°)	TVD (usft)	N/S (usft)	E/W (usft)	DLeg (°/100usft)	Build (°/100usft)	Turn (°/100usft)	High to Plan (usft)	Right to Plan (usft)
0.0	0.00	0.00	0.0	0.0	0.0	0.00	0.00	0.00	0.0	0.0
169.1	1.30	288.00	169.0	0.6	-1.8	0.77	0.77	0.00	-1.9	0.0
320.0	2.60	280.40	319.9	1.7	-6.8	0.88	0.86	-5.03	-7.0	-0.5
411.0	3.30	276.90	410.8	2.4	-11.5	0.79	0.77	-3.85	-11.7	-1.0
603.0	1.20	232.90	602.6	1.9	-18.5	1.34	-1.09	-22.92	-13.7	-12.7
794.0	1.00	209.80	793.6	-0.8	-21.0	0.25	-0.10	-12.09	-11.1	-17.8
985.0	4.20	125.00	984.4	-6.2	-16.1	2.21	1.68	-44.40	9.6	-14.3
1,080.0	4.70	133.20	1,079.1	-10.9	-10.4	0.85	0.53	8.63	0.1	-15.0
1,271.0	8.40	135.30	1,268.8	-26.2	5.1	1.94	1.94	1.10	-22.2	-14.9
1,462.0	8.80	118.40	1,457.7	-43.0	27.8	1.33	0.21	-8.85	-40.5	-27.1
1,652.0	8.20	100.10	1,645.7	-52.3	53.9	1.45	-0.32	-9.63	-40.1	-45.8
1,843.0	8.00	88.80	1,834.8	-54.4	80.6	0.84	-0.10	-5.92	-33.9	-54.7
2,034.0	7.40	84.40	2,024.1	-53.0	106.2	0.44	-0.31	-2.30	-32.0	-55.7
2,224.0	7.00	85.60	2,212.6	-50.9	129.9	0.22	-0.21	0.63	-33.9	-52.8
2,415.0	6.50	81.10	2,402.2	-48.3	152.2	0.38	-0.26	-2.36	-29.1	-52.4
2,605.0	6.60	78.40	2,591.0	-44.5	173.5	0.17	0.05	-1.42	-25.7	-49.3
2,796.0	6.70	78.70	2,780.7	-40.1	195.2	0.06	0.05	0.16	-25.2	-44.4
2,986.0	6.90	73.80	2,969.4	-34.7	217.0	0.32	0.11	-2.58	-21.7	-40.6
3,177.0	8.40	75.20	3,158.7	-27.9	241.5	0.79	0.79	0.73	-25.6	-33.6
3,368.0	9.60	74.60	3,347.3	-20.2	270.4	0.63	0.63	-0.31	-32.8	-27.7
3,558.0	7.90	72.20	3,535.1	-12.0	298.1	0.91	-0.89	-1.26	-38.6	-22.4
3,749.0	8.50	84.70	3,724.2	-6.6	324.6	0.98	0.31	6.54	-46.3	-8.4
3,940.0	7.30	78.90	3,913.3	-3.0	350.6	0.75	-0.63	-3.04	-48.6	-9.8
4,131.0	5.40	99.20	4,103.2	-2.1	371.4	1.53	-0.99	10.63	-46.4	8.3
4,322.0	5.70	102.50	4,293.3	-5.6	389.5	0.23	0.16	1.73	-41.5	6.6
4,512.0	8.50	100.40	4,481.8	-10.2	412.5	1.48	1.47	-1.11	-42.3	0.8
4,703.0	9.60	109.60	4,670.4	-18.1	441.4	0.95	0.58	4.82	-49.6	2.1



EOG Resources  
Midland PVA

Company: EOG Resources - Midland  
Project: Lea County, NM (NAD 83 NME)  
Site: Antero 14 Fed Com  
Well: #703H  
Wellbore: OH  
Design: OH

Local Co-ordinate Reference:  
TVD Reference: MD Reference:  
North Reference:  
Survey Calculation Method:  
Database:  
EDM  
Gnd  
Minimum Curvature  
KB = 22' @ 3384.0usft  
KB = 22' @ 3384.0usft

Survey	MD (usft)	Inc (")	Azi (azimuth) (°)	TVD (usft)	N/S (usft)	EW (usft)	Dleg ("/100usft)	Build ("/100usft)	Turn ("/100usft)	High to Plan (usft)	Right to Plan (usft)
	4,894.0	9.40	97.30	4,858.8	-25.4	471.9	1.07	-0.10	-6.44	-57.0	-14.6
	5,085.0	7.30	98.10	5,047.8	-29.1	499.4	1.10	-1.10	0.42	-61.9	-16.6
	5,275.0	8.70	71.30	5,236.0	-26.2	525.0	2.07	0.74	-14.11	-51.3	-40.4
	5,466.0	8.70	67.60	5,424.8	-16.0	552.0	0.29	0.00	-1.94	-56.0	-35.5
	5,657.0	8.30	69.00	5,613.7	-5.6	578.2	0.24	-0.21	0.73	-63.5	-25.2
	5,848.0	7.70	68.60	5,802.9	4.0	603.0	0.32	-0.31	-0.26	-68.3	-17.2
	6,038.0	7.70	75.90	5,991.2	11.8	627.2	0.52	0.00	3.89	-72.8	-0.8
	6,229.0	6.90	71.90	6,180.6	18.5	650.5	0.50	-0.42	-2.09	-74.8	0.7
	6,419.0	6.50	70.00	6,369.3	25.7	671.5	0.24	-0.21	-1.00	-75.2	5.9
	6,610.0	6.20	79.70	6,559.1	31.3	691.8	0.58	-0.16	5.08	-71.3	24.6
	6,801.0	5.90	66.20	6,749.1	37.1	710.9	0.76	-0.16	-7.07	-73.9	14.4
	6,992.0	3.70	48.90	6,939.4	45.1	724.5	1.37	-1.15	-9.06	-79.7	-1.7
	7,183.0	0.10	46.10	7,130.3	48.2	729.3	1.88	-1.88	-1.47	-83.9	-4.1
	7,278.0	0.20	106.70	7,225.3	49.3	729.5	0.18	0.11	63.79	-45.0	71.2
	7,468.0	0.20	352.10	7,415.3	49.5	729.8	0.18	0.00	-60.32	-46.2	-70.8
	7,659.0	0.30	248.30	7,606.3	49.6	729.3	0.21	0.05	-54.35	79.4	-28.3
	7,727.6	0.51	240.71	7,674.9	49.4	728.8	0.32	0.31	-11.07	81.9	-17.6
Brushy Top (Ant 14 EC #703H)	7,850.0	0.90	236.20	7,797.3	48.6	727.6	0.32	0.32	-3.68	81.5	-11.1
	8,041.0	0.50	224.70	7,988.3	47.2	725.7	0.22	-0.21	-6.02	79.8	5.0
	8,232.0	0.80	219.80	8,179.2	45.6	724.3	0.16	0.16	-2.57	76.9	11.8
	8,423.0	0.90	244.10	8,370.2	43.9	722.1	0.19	0.05	12.72	72.2	-20.4
	8,613.0	1.30	231.50	8,560.2	41.9	719.1	0.24	0.21	-6.63	71.3	-4.5
	8,804.0	1.50	243.30	8,751.1	39.4	715.1	0.18	0.10	6.18	64.3	-18.5
	8,996.0	1.50	243.40	8,942.1	37.2	710.7	0.00	0.00	0.05	69.3	-18.6
	9,186.0	1.60	246.30	9,132.0	35.0	706.0	0.07	0.05	1.53	63.1	-21.5
	9,376.0	2.30	264.70	9,322.9	33.6	699.7	0.49	0.37	9.63	37.2	-36.3



EOG Resources  
Midland PVA

Company:	EOG Resources - Midland	Local Co-ordinate Reference:	Well #703H
Project:	Lea County, NM (NAD 83 NME)	TVD Reference:	KB = 22' @ 3384.0usft
Site:	Antero 14 Fed Com	MD Reference:	KB = 22' @ 3384.0usft
Well:	#703H	North Reference:	Grid
Wellbore:	OH	Survey Calculation Method:	Minimum Curvature
Design:	OH	Database:	EDM

MD (usft)	Inc (°)	Azi (azimuth) (°)	TVD (usft)	N/S (usft)	E/W (usft)	DLeg (°/100usft)	Build (°/100usft)	Turn (°/100usft)	High to Plan (usft)	Right to Plan (usft)
9,567.0	3.10	269.00	9,513.7	33.1	690.8	0.43	0.42	2.25	25.4	-38.7
9,757.0	2.80	266.70	9,703.4	32.8	681.0	0.17	-0.16	-1.21	17.2	-37.9
9,853.0	3.10	263.20	9,799.3	32.3	676.1	0.36	0.31	-3.65	14.5	-36.9
9,948.0	3.50	255.30	9,894.1	31.3	670.7	0.64	0.42	-8.32	14.0	-34.9
10,138.0	2.20	271.00	10,083.9	29.9	661.5	0.79	-0.68	8.26	-5.2	-35.8
10,329.0	1.90	272.70	10,274.8	30.1	654.6	0.16	-0.16	0.89	-13.0	-35.5
10,520.0	0.80	279.80	10,465.7	30.5	650.2	0.58	-0.58	3.72	-21.8	-33.3
10,711.0	1.60	290.60	10,656.7	31.6	646.4	0.43	0.42	5.65	-31.6	-28.3
10,901.0	0.30	200.70	10,846.7	32.1	643.7	0.86	-0.68	-47.32	27.8	-34.3
10,997.0	1.00	185.40	10,942.6	31.0	643.5	0.74	0.73	-15.94	34.8	-25.9
11,092.0	1.40	234.70	11,037.6	29.5	642.5	1.12	0.42	51.89	1.4	-42.6
11,283.0	1.10	211.50	11,228.6	26.6	639.5	0.30	-0.16	-12.15	14.1	-39.5
11,473.0	1.80	175.80	11,418.5	22.1	638.9	0.58	0.37	-18.79	30.0	-25.0
11,664.0	1.80	107.00	11,609.5	18.2	642.0	1.06	0.00	-36.02	30.0	16.2
11,753.0	2.20	111.60	11,698.4	17.2	644.9	0.48	0.45	5.17	28.1	13.8
11,873.0	1.50	98.40	11,818.3	16.1	648.6	0.68	-0.58	-11.00	20.4	19.3
11,880.0	1.26	59.81	11,825.3	16.1	648.8	13.43	-3.40	-551.28	3.8	27.8
KOP, MD:11880.0, TVD:11825.3, N/S:16.1, E/W:648.8, INC:1.26										
11,968.0	12.00	341.20	11,912.7	25.3	646.7	13.43	12.20	-89.33	-35.8	8.4
11,998.3	16.88	342.47	11,942.0	32.5	644.3	16.13	16.09	4.20	-43.2	9.5
KOP(Ant 14 FC #703H)										
12,033.9	22.61	343.28	11,975.5	44.0	640.8	16.13	16.11	2.27	-54.5	10.5
FTP Crossing, MD:12033.9, TVD:11975.5, N/S:44.0, E/W:640.8, INC:22.61										
12,063.0	27.30	343.70	12,001.9	55.8	637.3	16.13	16.11	1.44	-64.6	11.8
12,159.0	37.50	341.00	12,082.8	104.7	621.6	10.73	10.62	-2.81	-98.1	15.4
12,254.0	45.60	352.80	12,154.0	165.9	607.9	11.83	8.53	12.42	-117.5	46.5



EOG Resources  
Midland PVA

Company:	EOG Resources - Midland	Local Co-ordinate Reference:	Well #703H
Project:	Lea County, NM (NAD 83 NME)	TVD Reference:	KB = 22' @ 3384.0usft
Site:	Antero 14 Fed Com	MD Reference:	KB = 22' @ 3384.0usft
Well:	#703H	North Reference:	Grid
Wellbore:	.OH	Survey Calculation Method:	Minimum Curvature
Design:	.OH	Database:	EDM

MD (usft)	Inc (°)	Azi (azimuth) (°)	TVD (usft)	N/S (usft)	E/W (usft)	DLeg (°/100usft)	Build (°/100usft)	Turn (°/100usft)	High to Plan (usft)	Right to Plan (usft)
12,343.7	51.82	0.01	12,213.2	233.0	603.8	9.19	6.93	8.04	-125.6	61.2
FTP(Ant 14 FC #703H)										
12,349.0	52.20	0.40	12,216.4	237.2	603.9	9.19	7.16	7.28	-125.7	61.6
12,445.0	52.60	2.20	12,275.0	313.2	605.6	1.54	0.42	1.87	-118.5	61.5
12,540.0	56.00	3.90	12,330.4	390.3	609.7	3.86	3.58	1.79	-89.8	58.4
12,635.0	64.20	1.30	12,377.8	472.5	613.4	8.95	8.63	-2.74	-51.2	52.2
12,730.0	76.90	357.90	12,409.3	561.8	612.6	13.79	13.37	-3.58	-22.2	49.2
12,855.0	92.00	0.10	12,421.4	685.9	610.5	12.21	12.08	1.76	-10.1	50.3
12,921.0	90.30	3.50	12,420.1	751.8	612.6	5.76	-2.58	5.15	-11.3	47.7
13,016.0	88.40	4.30	12,421.2	846.6	619.0	2.17	-2.00	0.84	-9.8	40.6
13,111.0	87.50	1.70	12,424.6	941.4	624.0	2.89	-0.95	-2.74	-6.2	34.9
13,207.0	87.10	359.50	12,429.1	1,037.2	625.0	2.33	-0.42	-2.29	-1.5	33.2
13,302.0	87.70	358.90	12,433.4	1,132.1	623.7	0.89	0.63	-0.63	3.0	33.8
13,397.0	91.20	0.80	12,434.3	1,227.1	623.4	4.19	3.68	2.00	4.1	33.3
13,493.0	91.90	1.10	12,431.7	1,323.1	625.0	0.79	0.73	0.31	1.8	31.0
13,588.0	88.90	2.90	12,431.0	1,418.0	628.3	3.68	-3.16	1.89	1.4	27.0
13,684.0	90.80	2.90	12,431.3	1,513.9	633.2	1.98	1.98	0.00	1.8	21.4
13,783.0	92.60	2.00	12,428.4	1,612.7	637.4	2.03	1.82	-0.91	-0.9	16.5
13,878.0	90.40	4.70	12,425.9	1,707.5	643.0	3.67	-2.32	2.84	-3.1	10.2
13,974.0	88.20	2.30	12,427.0	1,803.3	648.8	3.39	-2.29	-2.50	-1.7	3.6
14,069.0	88.80	1.50	12,429.5	1,898.2	652.0	1.05	0.63	-0.84	1.0	-0.2
14,164.0	89.50	0.50	12,430.9	1,993.2	653.6	1.28	0.74	-1.05	2.6	-2.6
14,260.0	88.30	1.80	12,432.8	2,089.2	655.6	1.84	-1.25	1.35	4.7	-5.2
14,283.4	88.50	1.90	12,433.4	2,112.6	656.3	0.94	0.84	0.42	5.4	-6.2
TGT#1(Ant 14 FC #703H)										
14,355.0	89.10	2.20	12,434.9	2,184.1	658.9	0.94	0.84	0.42	7.3	-9.3
14,450.0	88.00	1.80	12,437.3	2,279.0	662.2	1.23	-1.16	-0.42	10.2	-13.3





EOG Resources  
Midland PVA

Company:	EOG Resources - Midland	Local Co-ordinate Reference:	Well #703H
Project:	Lea County, NM (NAD 83 NME)	TVD Reference:	KB = 22' @ 3384.0usft
Site:	Antero 14 Fed Com	MD Reference:	KB = 22' @ 3384.0usft
Well:	#703H	North Reference:	Grid
Wellbore:	OH	Survey Calculation Method:	Minimum Curvature
Design:	OH	Database:	EDM

MD (usft)	Inc (°)	Azi (azimuth) (°)	TVD (usft)	N/S (usft)	E/W (usft)	DLeg (°/100usft)	Build (°/100usft)	Turn (°/100usft)	High to Plan (usft)	Right to Plan (usft)
14,545.0	89.20	2.20	12,439.7	2,373.9	665.5	1.33	1.26	0.42	13.0	-17.3
14,641.0	90.20	2.80	12,440.2	2,469.8	669.7	1.21	1.04	0.62	14.0	-22.2
14,736.0	87.30	359.90	12,442.2	2,564.7	671.9	4.32	-3.05	-3.05	16.5	-25.2
14,832.0	89.40	357.40	12,445.0	2,660.7	669.7	3.40	2.19	-2.60	19.8	-23.6
14,927.0	92.00	357.40	12,443.8	2,755.5	665.4	2.74	2.74	0.00	19.1	-20.0
15,022.0	89.90	356.30	12,442.3	2,850.4	660.2	2.50	-2.21	-1.16	18.0	-15.5
15,118.0	90.60	356.30	12,441.8	2,946.2	654.0	0.73	0.73	0.00	18.1	-10.0
15,268.9	94.08	357.56	12,435.7	3,096.7	645.9	2.45	2.30	0.84	12.7	-3.1
TGT#2(Ant 14 FC #703H)										
15,309.0	95.00	357.90	12,432.5	3,136.7	644.3	2.45	2.30	0.84	9.8	-1.8
15,418.0	90.80	357.90	12,427.0	3,245.4	640.3	3.85	-3.85	0.00	5.2	1.4
15,500.0	89.30	359.50	12,426.9	3,327.4	638.5	2.67	-1.83	1.95	5.8	2.6
15,595.0	88.40	359.20	12,428.8	3,422.4	637.4	1.00	-0.95	-0.32	8.5	3.0
15,691.0	88.00	359.30	12,431.9	3,518.3	636.1	0.43	-0.42	0.10	12.2	3.5
15,786.0	88.10	359.60	12,435.1	3,613.3	635.2	0.33	0.11	0.32	16.2	3.7
15,882.0	88.00	359.90	12,438.4	3,709.2	634.8	0.33	-0.10	0.31	20.3	3.5
15,977.0	90.60	359.70	12,439.5	3,804.2	634.5	2.74	2.74	-0.21	22.2	3.1
16,073.0	92.30	359.80	12,437.1	3,900.1	634.0	1.77	1.77	0.10	20.6	2.8
16,168.0	92.10	0.10	12,433.4	3,995.1	634.0	0.38	-0.21	0.32	17.7	2.1
16,263.0	92.10	0.10	12,430.0	4,090.0	634.1	0.00	0.00	0.00	15.0	1.3
16,358.0	90.00	0.30	12,428.2	4,185.0	634.5	2.22	-2.21	0.21	14.0	0.2
16,454.0	88.50	359.10	12,429.5	4,281.0	634.0	2.00	-1.56	-1.25	16.0	0.0
16,509.3	88.33	358.69	12,431.0	4,336.3	632.9	0.80	-0.32	-0.74	18.0	0.7
TGT#3(Ant 14 FC #703H)										
16,549.0	88.20	358.40	12,432.2	4,375.9	631.9	0.80	-0.32	-0.74	19.3	1.4
16,644.0	88.80	358.90	12,434.7	4,470.9	629.6	0.82	0.63	0.53	21.8	2.9
16,740.0	89.80	358.90	12,435.9	4,566.8	627.8	1.04	1.04	0.00	22.9	4.0



EOG Resources  
Midland PVA

Company:	EOG Resources - Midland	Local Co-ordinate Reference:	Well #703H
Project:	Lea County, NM (NAD 83 NME)	TVD Reference:	KB = 22' @ 3384.0usft
Site:	Antero 14 Fed Com	MD Reference:	KB = 22' @ 3384.0usft
Well:	#703H	North Reference:	Grid
Wellbore:	OH	Survey Calculation Method:	Minimum Curvature
Design:	OH	Database:	EDM

MD (usft)	Inc (°)	Azi (azimuth) (°)	TVD (usft)	N/S (usft)	E/W (usft)	DLeg (°/100usft)	Build (°/100usft)	Turn (°/100usft)	High to Plan (usft)	Right to Plan (usft)
16,835.0	89.40	359.00	12,436.5	4,661.8	626.1	0.43	-0.42	0.11	23.6	5.1
16,931.0	89.50	359.10	12,437.5	4,757.8	624.5	0.15	0.10	0.10	24.5	5.9
17,026.0	89.50	358.00	12,438.3	4,852.8	622.1	1.16	0.00	-1.16	25.3	7.6
17,122.0	89.20	357.60	12,439.4	4,948.7	618.4	0.52	-0.31	-0.42	26.4	10.6
17,217.0	88.30	357.90	12,441.4	5,043.6	614.7	1.00	-0.95	0.32	28.5	13.6
17,312.0	92.00	0.50	12,441.2	5,138.5	613.3	4.76	3.89	2.74	28.2	14.2
17,407.0	92.90	0.30	12,437.1	5,233.5	614.0	0.97	0.95	-0.21	24.1	12.9
17,503.0	90.20	359.50	12,434.5	5,329.4	613.8	2.93	-2.81	-0.83	21.5	12.3
17,578.9	91.16	359.98	12,433.6	5,405.3	613.5	1.41	1.26	0.63	20.6	12.1
TGT#4(Ano 14 FC #703H)										
17,598.0	91.40	0.10	12,433.2	5,424.4	613.5	1.41	1.26	0.63	20.2	11.9
17,693.0	93.40	0.50	12,429.2	5,519.3	614.0	2.16	2.11	0.42	16.0	10.7
17,789.0	90.20	1.00	12,426.2	5,615.2	615.2	3.37	-3.33	0.52	12.8	8.8
17,884.0	89.10	1.50	12,426.8	5,710.2	617.3	1.27	-1.16	0.53	13.2	6.0
17,979.0	87.30	359.50	12,429.8	5,805.2	618.1	2.83	-1.89	-2.11	15.9	4.4
18,075.0	87.70	359.30	12,434.0	5,901.1	617.1	0.47	0.42	-0.21	19.9	4.7
18,170.0	88.80	359.50	12,436.9	5,996.0	616.1	1.18	1.16	0.21	22.6	5.0
18,265.0	90.10	359.60	12,437.8	6,091.0	615.4	1.37	1.37	0.11	23.3	5.0
18,361.0	91.10	0.30	12,436.8	6,187.0	615.3	1.27	1.04	0.73	22.1	4.4
18,456.0	93.80	1.30	12,432.7	6,281.9	616.6	3.03	2.84	1.05	17.9	2.4
18,551.0	90.60	0.80	12,429.1	6,376.8	618.4	3.41	-3.37	-0.53	14.0	-0.1
18,647.0	90.90	2.10	12,427.8	6,472.7	620.8	1.39	0.31	1.35	12.5	-3.2
18,742.0	89.20	0.60	12,427.7	6,567.7	623.0	2.39	-1.79	-1.58	12.3	-6.2
18,838.0	88.10	0.80	12,430.0	6,663.7	624.2	1.16	-1.15	0.21	14.3	-8.1
18,933.0	88.10	0.40	12,433.1	6,758.6	625.2	0.42	0.00	-0.42	17.3	-9.8
19,028.0	88.40	0.10	12,436.0	6,853.6	625.6	0.45	0.32	-0.32	20.0	-10.9
19,123.0	88.90	0.50	12,438.3	6,948.5	626.1	0.67	0.53	0.42	22.0	-12.1



EOG Resources  
Midland PVA

Company:	EOG Resources - Midland	Local Co-ordinate Reference:	Well #703H
Project:	Lea County, NM (NAD 83 NME)	TVD Reference:	KB = 22' @ 3384.0usft
Site:	Antero 14 Fed Com	MD Reference:	KB = 22' @ 3384.0usft
Well:	#703H	North Reference:	Grid
Wellbore:	OH	Survey Calculation Method:	Minimum Curvature
Design:	OH	Database:	EDM

MD (usft)	Inc (°)	Azi (azimuth) (°)	TVD (usft)	N/S (usft)	E/W (usft)	DLeg (°/100usft)	Build (°/100usft)	Turn (°/100usft)	High to Plan (usft)	Right to Plan (usft)
19,218.0	92.00	2.60	12,437.5	7,043.5	628.7	3.94	3.26	2.21	21.1	-15.3
19,362.0	91.30	2.40	12,433.4	7,187.3	635.0	0.51	-0.49	-0.14	16.6	-22.7
19,407.0	88.00	1.60	12,433.7	7,232.3	636.5	7.55	-7.33	-1.78	16.8	-24.6
19,502.0	88.30	1.40	12,436.7	7,327.2	639.0	0.38	0.32	-0.21	19.6	-27.8
19,598.0	86.70	358.50	12,440.9	7,423.1	638.9	3.45	-1.67	-3.02	23.6	-28.5
19,693.0	87.90	358.90	12,445.4	7,517.9	636.8	1.33	1.26	0.42	27.9	-27.0
19,788.0	89.40	359.30	12,447.6	7,612.9	635.3	1.63	1.58	0.42	29.9	-26.2
Last MWD Survey (MD=19788.0)										
19,930.0	89.40	359.30	12,449.1	7,754.9	633.6	0.00	0.00	0.00	31.1	-25.6
Projection to Bit (MD=19930.0) - PBHL(Ant 14 FC #703H)										

Design Annotations				
Measured Depth (usft)	Vertical Depth (usft)	Local Coordinates		Comment
		+N/-S (usft)	+E/-W (usft)	
11,880.0	11,825.3	16.1	648.8	KOP, MD:11880.0, TVD:11825.3, N/S:16.1, E/W:648.8, INC:1.26
12,033.9	11,975.5	44.0	640.8	FTP Crossing, MD:12033.9, TVD:11975.5, N/S:44.0, E/W:640.8, INC:22.61
19,788.0	12,447.6	7,612.9	635.3	Last MWD Survey (MD=19788.0)
19,930.0	12,449.1	7,754.9	633.6	Projection to Bit (MD=19930.0)

Checked By: \_\_\_\_\_ Approved By: \_\_\_\_\_ Date: \_\_\_\_\_

I certify this survey to be true and correct to the best of my belief and knowledge.

Kay Maddox 10/15/2020  
Signed Date



Lea County, NM (NAD 83 NME)

Antero 14 Fed Com #703H

Plan #1

PROJECT DETAILS: Lea County, NM (NAD 83 NME)

Geodetic System: US State Plane 1983  
Datum: North American Datum 1983  
Ellipsoid: GRS 1980  
Zone: New Mexico Eastern Zone  
System Datum: Mean Sea Level

WELL DETAILS: #703H

KB = 22' @ 3384.0usft  
Northing 412174.00 Easting 783957.00  
Latitude 32° 7' 50.585 N Longitude 109° 32' 57.538 W

Azimuths to Grid North  
True North: -0.42°  
Magnetic North: 5.23°  
Magnetic Field  
Strength: 47615.4nT  
Dip Angle: 59.95°  
Date: 2/2/2020  
Model: IGRF2015

To convert a Magnetic Direction to a Grid Direction, Add 6.23°  
To convert a Magnetic Direction to a True Direction, Add 6.65° East  
To convert a True Direction to a Grid Direction, Subtract 0.42°

#### SECTION DETAILS

Sec	MD	Inc	Azi	TVD	+N/-S	+E/-W	Dleg	TFace	Vsect	Target
1	0.0	0.00	0.00	0.0	0.0	0.0	0.00	0.00	0.0	
2	1290.0	0.00	0.00	1290.0	0.0	0.0	0.00	0.00	0.0	
3	1640.1	7.00	90.52	1639.2	-0.2	21.4	2.00	90.52	1.5	
4	6753.8	7.00	90.52	6714.8	-5.8	644.6	0.00	0.00	44.6	
5	7103.9	0.00	0.00	7064.0	-6.0	666.0	2.00	180.00	46.1	
6	11994.4	0.00	0.00	11954.5	-6.0	666.0	0.00	0.00	46.1	
7	12745.5	90.14	359.57	12432.0	472.6	662.4	12.00	359.57	522.9	
8	14385.9	90.14	359.57	12428.0	2112.9	650.2	0.00	0.00	2157.2	TGT#1(Ant 14 FC #703H)
9	14393.5	90.29	359.57	12428.0	2120.6	650.1	2.00	0.00	2164.9	TGT#2(Ant 14 FC #703H)
10	15368.9	90.29	359.57	12423.0	3095.9	642.8	0.00	0.00	3136.7	TGT#3(Ant 14 FC #703H)
11	15377.4	90.46	359.57	12422.9	3104.4	642.8	2.00	0.00	3145.2	TGT#4(Ant 14 FC #703H)
12	16609.9	90.46	359.57	12413.0	4336.8	633.5	0.00	0.00	4373.0	
13	16633.3	89.99	359.57	12412.9	4360.2	633.4	2.00	-180.00	4396.3	
14	17678.2	89.99	359.57	12413.0	5405.1	625.6	0.00	0.00	5437.5	
15	17684.1	89.88	359.57	12413.0	5410.9	625.5	2.00	-180.00	5443.3	
16	20029.2	89.88	359.57	12418.0	7756.0	608.0	0.00	0.00	7779.8	PBHL(Ant 14 FC #703H)

#### CASING DETAILS

No casing data is available

#### WELLBORE TARGET DETAILS (MAP CO-ORDINATES)

Name	TVD	+N/-S	+E/-W	Northing	Easting
Brushy Top(Ant 14 FC #703H)	7674.0	-6.0	665.0	412169.00	784663.00
TGT#1(Ant 14 FC #703H)	12413.0	4336.8	633.5	415510.80	784630.55
TGT#2(Ant 14 FC #703H)	12413.0	5405.1	625.6	417679.10	784622.57
PBHL(Ant 14 FC #703H)	12418.0	7756.0	608.0	419939.00	784605.00
TGT#2(Ant 14 FC #703H)	12423.0	3095.9	642.8	415269.00	784639.82
TGT#1(Ant 14 FC #703H)	12428.0	2112.9	650.2	414286.00	784647.17
FTP(Ant 14 FC #703H)	12433.0	44.0	656.0	41218.00	784633.50

