

DISTRICT I  
1625 N. French Dr., Hobbs, NM 88240  
Phone (505) 393-6181 Fax: (505) 393-0720

DISTRICT II  
611 S. First St., Artesia, NM 88210  
Phone (505) 748-1283 Fax: (505) 748-9720

DISTRICT III  
1000 Rio Brazos Rd., Aztec, NM 87410  
Phone (505) 334-6178 Fax: (505) 334-6170

DISTRICT IV  
1220 S. St. Francis Dr., Santa Fe, NM 87505  
Phone (505) 478-3460 Fax: (505) 478-3462

State of New Mexico  
Energy, Minerals and Natural Resources Department

Form C-102  
Revised August 4, 2011

Submit one copy to appropriate  
District Office

OIL CONSERVATION DIVISION  
1220 South St. Francis Dr.  
Santa Fe, New Mexico 87505

**OCB - HOBBS**  
**11/18/2020**  
**RECEIVED**

WELL LOCATION AND ACREAGE DEDICATION  PLAT  AMENDED REPORT

|                                   |   |  |
|-----------------------------------|---|--|
| API Number<br><b>30-025-48009</b> | Pool Code<br><b>97895</b>                                     | Pool Name<br><b>WC-025 G-08 S213304D;BONE SPRING</b> |
| Property Code<br><b>328246</b>    | Property Name<br><b>MARGARITA FEDERAL COM 13</b>              | Well Number<br><b>13H</b>                            |
| OGRID No.<br><b>372417</b>        | Operator Name<br><b>Advance Energy Partners Hat Mesa, LLC</b> | Elevation<br><b>3916'</b>                            |

Surface Location

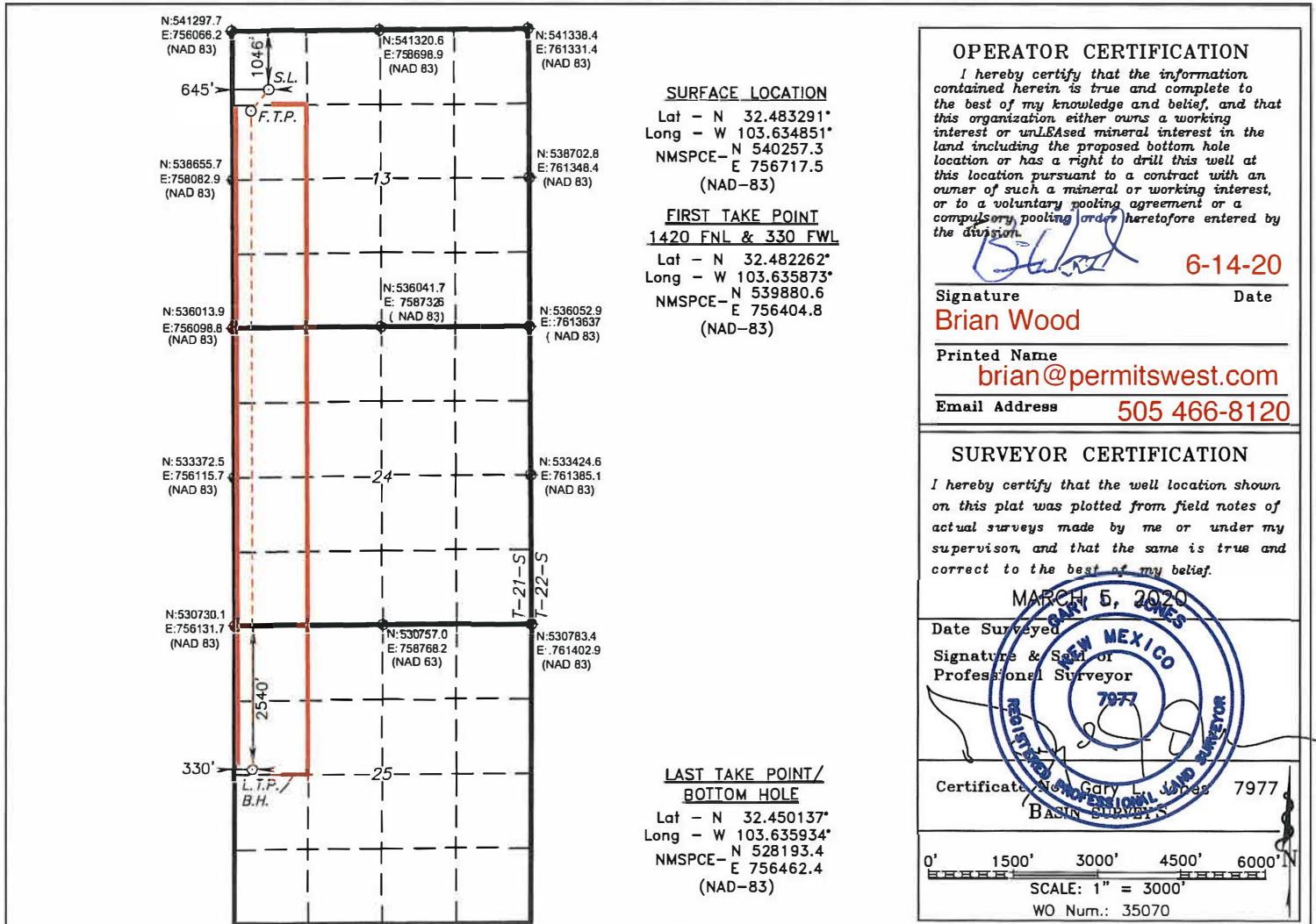
| UL or lot No. | Section | Township | Range | Lot Idn | Feet from the | SOUTH/South line | Feet from the | East/West line | County |
|---------------|---------|----------|-------|---------|---------------|------------------|---------------|----------------|--------|
| D             | 13      | 21 S     | 32 E  |         | 1046          | NORTH            | 645           | WEST           | LEA    |

Bottom Hole Location If Different From Surface

| UL or lot No. | Section | Township | Range | Lot Idn | Feet from the | SOUTH/South line | Feet from the | East/West line | County |
|---------------|---------|----------|-------|---------|---------------|------------------|---------------|----------------|--------|
| E             | 25      | 21 S     | 32 E  |         | 2540          | NORTH            | 330           | WEST           | LEA    |

|                                  |                 |                                |           |
|----------------------------------|-----------------|--------------------------------|-----------|
| Dedicated Acres<br><b>360.00</b> | Joint or Infill | Consolidation Code<br><b>C</b> | Order No. |
|----------------------------------|-----------------|--------------------------------|-----------|

NO ALLOWABLE WILL BE ASSIGNED TO THIS COMPLETION UNTIL ALL INTERESTS HAVE BEEN CONSOLIDATED OR A NON-STANDARD UNIT HAS BEEN APPROVED BY THE DIVISION



**OPERATOR CERTIFICATION**  
I hereby certify that the information contained herein is true and complete to the best of my knowledge and belief, and that this organization either owns a working interest or unleased mineral interest in the land including the proposed bottom hole location or has a right to drill this well at this location pursuant to a contract with an owner of such a mineral or working interest, or to a voluntary pooling agreement or a compulsory pooling order heretofore entered by the division.

*Brian Wood* **6-14-20**  
Signature Date  
**Brian Wood**  
Printed Name  
**brian@permitswest.com**  
Email Address  
**505 466-8120**

**SURVEYOR CERTIFICATION**  
I hereby certify that the well location shown on this plat was plotted from field notes of actual surveys made by me or under my supervision, and that the same is true and correct to the best of my belief.

MARCH 5, 2020  
Date Surveyed  
Signature & Seal of Professional Surveyor  
Certificate No. Gary L. Jones 7977  
BASIN SURVEYORS

0' 1500' 3000' 4500' 6000'  
SCALE: 1" = 3000'  
WO Num.: 35070