

District I  
1625 N. French Dr., Hobbs, NM 88240  
Phone: (575) 393-6161 Fax: (575) 393-0720  
District II  
811 S. First St., Artesia, NM 88210  
Phone: (575) 748-1283 Fax: (575) 748-9720  
District III  
1000 Rio Brazos Road, Aztec, NM 87410  
Phone: (505) 334-6178 Fax: (505) 334-6170  
District IV  
1220 S. St. Francis Dr., Santa Fe, NM 87505  
Phone: (505) 476-3460 Fax: (505) 476-3462

State of New Mexico  
Energy, Minerals & Natural Resources  
Department  
OIL CONSERVATION DIVISION  
1220 South St. Francis Dr.  
Santa Fe, NM 87505

FORM C-102

Revised August 1, 2011

Submit one copy to appropriate

District Office

☐ AMENDED REPORT

## WELL LOCATION AND ACREAGE DEDICATION PLAT

<sup>1</sup> API Number 30-025-47176	<sup>2</sup> Pool Code 98180	<sup>3</sup> Pool Name WC025 G09 S253309P; UPPER WOLFCAMP <b>KZ</b>
<sup>4</sup> Property Code 328239	<sup>5</sup> Property Name GREEN DRAKE 21 FED COM	<sup>6</sup> Well Number 706H
<sup>7</sup> OGRID No. 7377	<sup>8</sup> Operator Name EOG RESOURCES, INC.	<sup>9</sup> Elevation 3370'

<sup>10</sup>Surface Location

UL or lot no.	Section	Township	Range	Lot Idn	Feet from the	North/South line	Feet from the	East/West line	County
0	21	25-S	33-E	-	270'	SOUTH	2209'	EAST	LEA

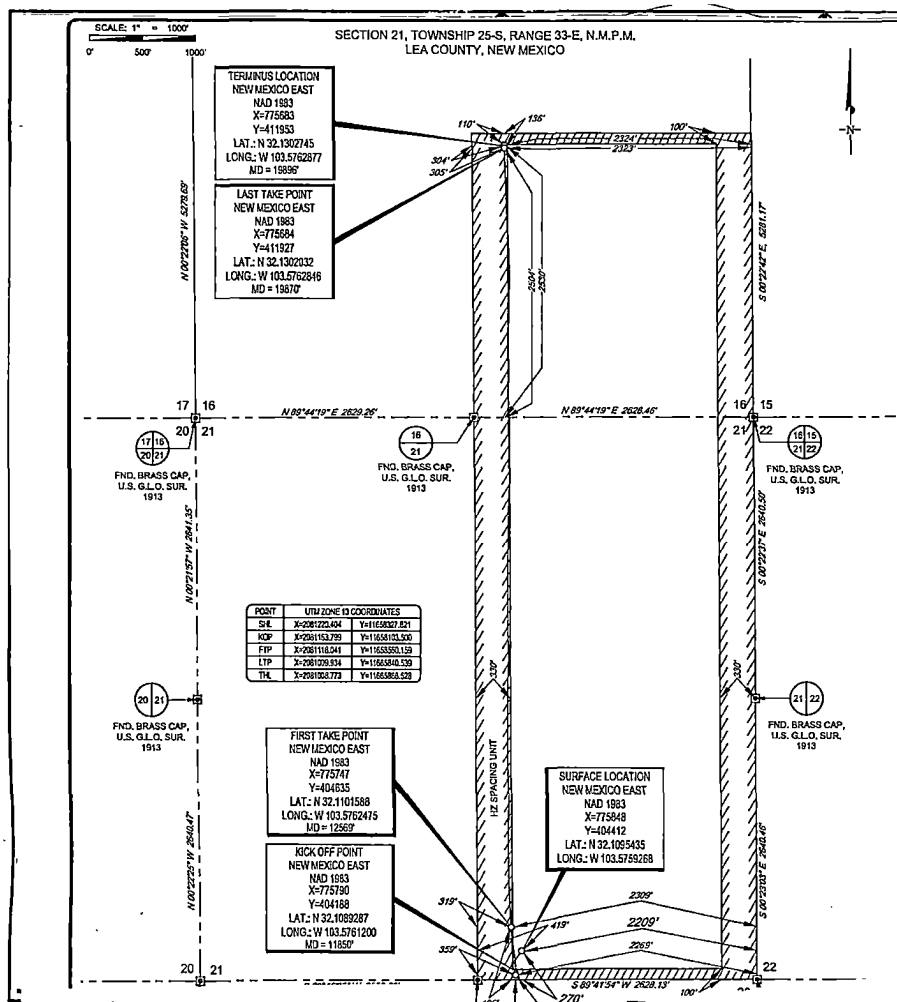
<sup>11</sup>Bottom Hole Location If Different From Surface

SL

UL or lot no.	Section	Township	Range	Lot Idn	Feet from the	North/South line	Feet from the	East/West line	County
J	16	25-S	33-E	-	2530'	SOUTH	2324'	EAST	LEA

<sup>12</sup> Dedicated Acres 480.00	<sup>13</sup> Joint or Infill	<sup>14</sup> Consolidation Code	<sup>15</sup> Order No.
---	-------------------------------	----------------------------------	-------------------------

No allowable will be assigned to this completion until all interests have been consolidated or a non-standard unit has been approved by the division.

<sup>17</sup>OPERATOR CERTIFICATION

I hereby certify that the information contained herein is true and complete to the best of my knowledge and belief, and that this organization either owns a working interest or unleased mineral interest in the land including the proposed bottom hole location or has a right to drill this well at this location pursuant to a contract with an owner of such a mineral or working interest, or to a voluntary pooling agreement or a compulsory pooling order heretofore entered by the division.

*Kay Maddox* 11/11/2020  
Signature Date

KAY MADDUX

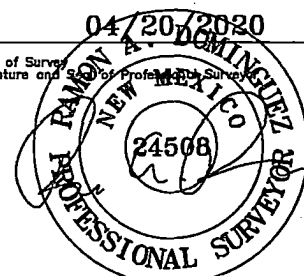
Printed Name

kay\_maddox@eogresources.com  
E-mail Address

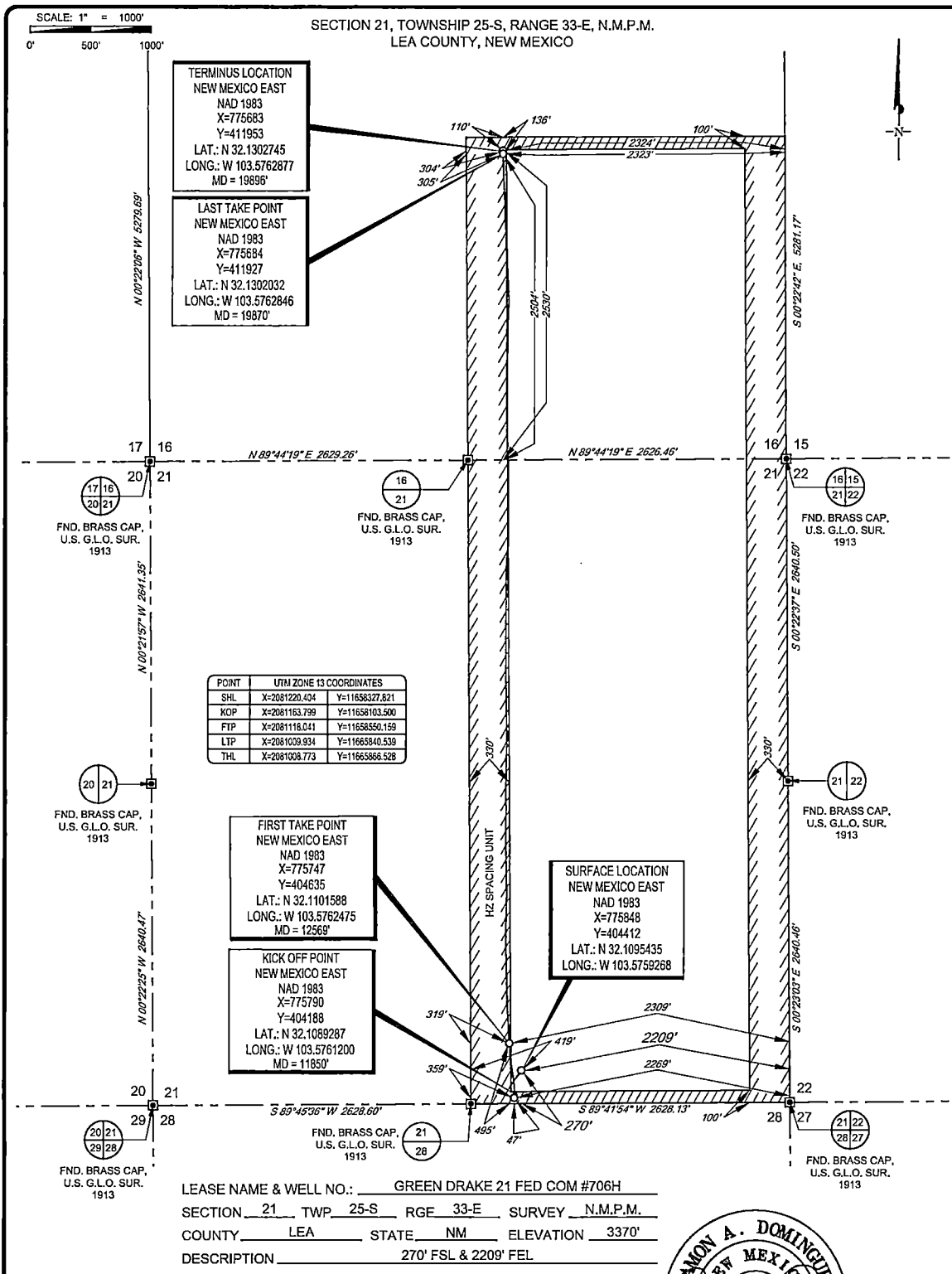
<sup>18</sup>SURVEYOR CERTIFICATION

I hereby certify that the well location shown on this plat was plotted from field notes of actual surveys made by me or under my supervision, and that the same is true to the best of my belief.

04/20/2020  
Date of Survey  
Signature and Seal of Professional Surveyor

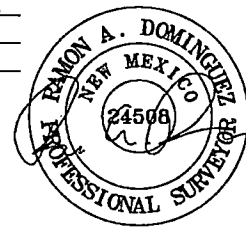


Certificate Number



**eoog resources, inc.**

**TOPOGRAPHIC**  
LOYALTY INNOVATION LEGACY  
1403 EVERMAN PARKWAY, Ste. 148 • FT. WORTH, TEXAS 76140  
TELEPHONE: (817) 744-7512 • FAX (817) 744-7554  
TEXAS FIRM REGISTRATION NO. 10042904  
WWW.TOPOGRAPHIC.COM



Ramon A. Dominguez, P.S. No. 24508  
OCTOBER 19, 2020

GREEN DRAKE 21 FED COM #706H AS-COMPLETED	REVISION:
DATE: 10/19/2020	
FILE: AD_GREEN_DRAKE_16_FED_COM_706H	
DRAWN BY: A.V.F.	
SHEET: 1 OF 1	

NOTES:  
1. ORIGINAL DOCUMENT SIZE: 8.5" X 14"  
2. ALL BEARINGS, DISTANCES, AND COORDINATE VALUES CONTAINED HEREIN ARE GRID BASED UPON THE NEW MEXICO COORDINATE SYSTEM OF 1983, EAST ZONE, U.S. SURVEY FEET.  
3. THIS WELL LOCATION SHOWN HEREON HAS BEEN SURVEYED ON THE GROUND UNDER MY SUPERVISION AND PREPARED ACCORDING TO THE EVIDENCE FOUND AT THE TIME OF SURVEY, AND DATA PROVIDED BY EOG RESOURCES, INC. THIS CERTIFICATION IS MADE AND LIMITED TO THOSE PERSONS OR ENTITIES SHOWN ON THE FACE OF THIS PLAT AND IS NON-TRANSFERABLE. THIS SURVEY IS CERTIFIED FOR THIS TRANSACTION ONLY.

Intent ☐ As Drilled ☒ XXX

API #  
30-025-47176

Operator Name:  
EOG RESOURCES, INC

Property Name:  
GREEN DRAKE 21 FEDERAL COM

Well Number  
706H

Kick Off Point (KOP)

UL	Section	Township	Range	Lot	Feet	From N/S	Feet	From E/W	County
O	21	25S	33E		47	SOUTH	2269	EAST	LEA
Latitude					Longitude				NAD
32.1089287					103.5761200				1983

First Take Point (FTP)

UL	Section	Township	Range	Lot	Feet	From N/S	Feet	From E/W	County
O	21	25S	33E		495	SOUTH	2309	EAST	LEA
Latitude					Longitude				NAD
32.1101588					103.5762475				1983

Last Take Point (LTP)

UL	Section	Township	Range	Lot	Feet	From N/S	Feet	From E/W	County
J	16	25S	33E		2504	SOUTH	2323	EAST	LEA
Latitude					Longitude				NAD
32.1302032					103.5762846				1983

Is this well the defining well for the Horizontal Spacing Unit? ☐ NO

Is this well an infill well? ☐ YES

If infill is yes please provide API if available, Operator Name and well number for Defining well for Horizontal Spacing Unit.

API #  
30-025-47179

Operator Name:  
EOG RESOURCES, INC

Property Name:  
GREEN DRAKE 21 FEDERAL COM

Well Number  
#709H

KZ 06/29/2018



## **EOG Resources - Midland**

Lea County, NM (NAD 83 NME)

Green Drake 21 Fed Com

#706H

OH

Design: OH

## **Midland PVA**

15 June, 2020



**EOG Resources**  
Midland PVA

Company:	EOG Resources - Midland	Local Co-ordinate Reference:	Well #706H
Project:	Lea County, NM (NAD 83 NME)	TVD Reference:	KB = 25 @ 3395.0usft
Site:	Green Drake 21 Fed Com	MD Reference:	KB = 25 @ 3395.0usft
Well:	#706H	North Reference:	Grid
Wellbore:	OH	Survey Calculation Method:	Minimum Curvature
Design:	OH	Database:	EDM

Project	Lea County, NM (NAD 83 NME)		
Map System:	US State Plane 1983	System Datum:	Mean Sea Level
Geo Datum:	North American Datum 1983		
Map Zone:	New Mexico Eastern Zone		

Site	Green Drake 21 Fed Com		
Site Position:		Northing:	404,412.00 usft
From:	Map	Easting:	775,848.00 usft
Position Uncertainty:	0.0 usft	Slot Radius:	13-3/16 "
		Latitude:	32° 6' 34.354 N
		Longitude:	103° 34' 33.335 W
		Grid Convergence:	0.40 "

Well	#706H		
Well Position	+N-S	0.0 usft	Northing:
	+E-W	0.0 usft	Easting:
Position Uncertainty	0.0 usft	Wellhead Elevation:	usft
		Latitude:	32° 6' 34.354 N
		Longitude:	103° 34' 33.335 W
		Ground Level:	3,370.0 usft

Wellbore	OH		
Magnetics	Model Name	Sample Date	Declination
	IGRF2020	6/6/2020	6.66
			Dip Angle
			59.83
			Field Strength
			47,532.64437274

Design	OH		
Audit Notes:			
Version:	1.0	Phase:	ACTUAL
		Tie On Depth:	0.0
Vertical Section:	Depth From (TVD)	+N-S	+E-W
	(usft)	(usft)	(usft)
	0.0	0.0	0.0
			Direction
			358.85

Survey Program	Date 6/15/2020		
From	To	Survey (Wellbore)	Tool Name
(usft)	(usft)		Description
196.0	19,896.0	Driltech MWD (OH)	EOG MWD+IFR1
			MWD + IFR1



EOG Resources  
Midland PVA

Company:	EOG Resources - Midland	Local Co-ordinate Reference:	Well #706H
Project:	Lea County, NM (NAD 83 NME)	TVD Reference:	KB = 25 @ 3395.0usft
Site:	Green Drake 21 Fed Com	MD Reference:	KB = 25 @ 3395.0usft
Well:	#706H	North Reference:	Grid
Wellbore:	OH	Survey Calculation Method:	Minimum Curvature
Design:	OH	Database:	EDM

MD (usft)	Incl (°)	Azi (azimuth) (°)	TVD (usft)	N/S (usft)	E/W (usft)	DLeg (°/100usft)	Build (°/100usft)	Turn (°/100usft)	High to Plan (usft)	Right to Plan (usft)
0.0	0.00	0.00	0.0	0.0	0.0	0.00	0.00	0.00	0.0	0.0
196.0	0.88	175.93	196.0	-1.5	0.1	0.45	0.45	0.00	-1.5	0.0
396.0	1.23	182.88	396.0	-5.2	0.1	0.19	0.17	3.47	-5.2	0.4
596.0	1.49	200.46	596.9	-9.8	-0.9	0.24	0.13	8.79	-9.5	2.6
793.0	1.41	230.60	792.8	-13.7	-3.7	0.38	-0.04	15.30	-11.5	8.3
983.0	0.97	242.29	982.8	-15.9	-6.9	0.26	-0.23	6.15	-13.5	10.9
1,128.0	1.14	242.12	1,127.8	-17.2	-9.3	0.12	0.12	-0.12	-16.2	10.8
1,269.0	1.41	248.62	1,268.7	-18.5	-12.1	0.22	0.19	4.61	-18.0	12.8
1,460.0	4.40	214.34	1,459.5	-25.4	-18.4	1.74	1.57	-17.95	-26.9	-1.7
1,650.0	4.66	218.83	1,648.9	-37.4	-27.4	0.23	0.14	2.36	-29.4	-2.3
1,841.0	4.57	217.77	1,839.3	-49.5	-36.9	0.06	-0.05	-0.55	-31.8	-6.1
2,031.0	4.75	223.31	2,028.6	-61.2	-47.0	0.26	0.09	2.92	-35.1	-6.5
2,222.0	5.72	222.69	2,218.8	-73.9	-58.8	0.51	0.51	-0.32	-39.8	-11.2
2,412.0	6.24	207.84	2,407.8	-90.0	-70.1	0.86	0.27	-7.82	-41.9	-24.3
2,603.0	6.16	204.94	2,597.7	-108.5	-79.2	0.17	-0.04	-1.52	-47.9	-27.0
2,793.0	5.89	203.18	2,786.7	-126.7	-87.4	0.17	-0.14	-0.93	-53.8	-28.5
2,984.0	5.54	169.43	2,976.8	-144.8	-89.5	1.74	-0.18	-17.67	-35.5	-51.3
3,174.0	5.28	144.91	3,165.9	-160.9	-82.8	1.21	-0.14	-12.91	-21.4	-53.8
3,365.0	4.76	133.13	3,356.2	-173.5	-72.0	0.60	-0.28	-6.17	-22.2	-46.2
3,556.0	2.29	137.79	3,546.8	-181.8	-63.7	1.30	-1.29	2.44	-32.2	-31.4
3,747.0	0.35	183.67	3,737.8	-185.2	-61.2	1.08	-1.02	24.02	-35.7	8.6
3,937.0	1.76	140.16	3,927.7	-188.0	-59.3	0.80	0.74	-22.90	-29.4	-6.8
4,127.0	1.67	185.26	4,117.7	-193.0	-57.7	0.69	-0.05	23.74	-17.9	22.4
4,318.0	3.34	128.56	4,308.5	-199.2	-53.6	1.46	0.87	-29.69	-32.3	7.9
4,508.0	0.88	33.64	4,498.4	-201.5	-48.5	1.86	-1.29	-49.96	-19.1	-36.3
4,699.0	3.61	105.53	4,689.2	-201.9	-41.9	1.80	1.43	37.64	-48.9	21.5
4,889.0	1.14	332.29	4,879.1	-201.8	-37.0	2.35	-1.30	-70.13	13.2	-63.6



EOG Resources  
Midland PVA

Company:	EOG Resources - Midland	Local Co-ordinate Reference:	Well #706H
Project:	Lea County, NM (NAD 83 NME)	TVD Reference:	KB = 25 @ 3395.0usft
Site:	Green Drake 21 Fed Com	MD Reference:	KB = 25 @ 3395.0usft
Well:	#706H	North Reference:	Grid
Wellbore:	OH	Survey Calculation Method:	Minimum Curvature
Design:	OH	Database:	EDM

Survey											
MD (usft)	Inc (°)	Azi (azimuth) (°)	TVD (usft)	N/S (usft)	E/W (usft)	DLeg (°/100usft)	Build (°/100usft)	Turn (°/100usft)	High to Plan (usft)	Right to Plan (usft)	
5,079.0	1.06	343.10	5,069.1	-198.4	-38.4	0.12	-0.04	5.69	-3.7	-65.5	
5,270.0	1.58	346.71	5,260.0	-194.2	-39.5	0.28	0.27	1.89	-12.2	-65.1	
5,460.0	1.49	344.07	5,450.0	-189.3	-40.8	0.06	-0.05	-1.39	-14.3	-65.7	
5,651.0	0.97	346.44	5,640.9	-185.3	-41.8	0.27	-0.27	1.24	-21.1	-64.9	
5,841.0	1.14	340.73	5,830.9	-181.9	-42.8	0.11	0.09	-3.01	-18.0	-66.9	
6,031.0	1.23	343.98	6,020.9	-178.2	-44.0	0.06	0.05	1.71	-25.7	-65.6	
6,222.0	1.14	322.89	6,211.8	-174.7	-45.7	0.23	-0.05	-11.04	-4.2	-71.2	
6,413.0	1.23	321.92	6,402.8	-171.6	-48.1	0.06	0.06	-0.61	-6.9	-71.3	
6,603.0	1.06	319.55	6,592.7	-168.6	-50.5	0.09	-0.09	-1.25	-7.7	-71.6	
6,794.0	0.70	240.89	6,783.7	-167.9	-52.7	0.60	-0.19	-41.18	67.2	-23.4	
6,984.0	1.41	219.00	6,973.7	-170.2	-55.2	0.42	0.37	-11.52	67.6	2.9	
7,175.0	1.32	213.20	7,164.6	-173.9	-57.9	0.09	-0.05	-3.04	62.5	9.5	
7,366.0	1.14	205.82	7,355.6	-177.5	-59.9	0.13	-0.09	-3.86	56.7	17.1	
7,498.6	1.26	210.68	7,488.2	-179.9	-61.2	0.12	0.09	3.67	55.1	12.4	
Brushy Top(GD 21 FC #706H)											
7,556.0	1.32	212.50	7,545.6	-181.0	-61.9	0.12	0.10	3.16	54.2	10.7	
7,747.0	1.41	185.51	7,736.5	-185.2	-63.3	0.34	0.05	-14.13	39.1	33.1	
7,937.0	1.58	192.63	7,926.4	-190.1	-64.1	0.13	0.09	3.75	38.0	28.3	
8,128.0	1.41	180.94	8,117.4	-195.0	-64.7	0.18	-0.09	-6.12	26.6	34.9	
8,318.0	1.41	164.33	8,307.3	-199.6	-64.1	0.21	0.00	-8.74	10.9	40.3	
8,508.0	2.02	172.42	8,497.2	-205.2	-63.1	0.34	0.32	4.26	10.8	38.7	
8,699.0	1.93	177.78	8,688.1	-211.7	-62.5	0.11	-0.05	2.81	7.8	37.8	
8,889.0	1.93	172.24	8,878.0	-218.1	-61.9	0.10	0.00	-2.92	-2.3	38.1	
9,079.0	1.58	167.76	9,067.9	-223.8	-60.9	0.20	-0.18	-2.36	-11.0	37.6	
9,270.0	0.88	167.94	9,258.9	-227.8	-60.1	0.37	-0.37	0.09	-15.0	37.6	
9,460.0	0.88	132.78	9,448.9	-230.2	-58.7	0.28	0.00	-18.51	-36.6	21.3	
9,651.0	1.76	129.26	9,639.8	-233.1	-55.4	0.46	0.46	-1.84	-42.2	18.9	



EOG Resources  
Midland PVA

Company:	EOG Resources - Midland	Local Co-ordinate Reference:	Well #706H
Project:	Lea County, NM (NAD 83 NME)	TVD Reference:	KB = 25 @ 3395.0usft
Site:	Green Drake 21 Fed Com	MD Reference:	KB = 25 @ 3395.0usft
Well:	#706H	North Reference:	Grid
Wellbore:	:OH	Survey Calculation Method:	Minimum Curvature
Design:	:OH	Database:	EDM

MD (usft)	Inc (")	Azi (azimuth) (")	TVD (usft)	N/S (usft)	E/W (usft)	DLeg ("/100usft)	Build ("/100usft)	Turn ("/100usft)	High to Plan (usft)	Right to Plan (usft)
9,841.0	1.41	125.22	9,829.7	-236.3	-51.2	0.19	-0.18	-2.13	-48.7	15.7
10,032.0	1.23	220.32	10,020.7	-239.2	-50.6	1.02	-0.09	49.79	18.1	49.5
10,222.0	1.49	227.17	10,210.6	-242.4	-53.7	0.16	0.14	3.61	19.4	47.2
10,412.0	1.32	197.73	10,400.6	-246.2	-56.2	0.39	-0.09	-15.49	-10.7	49.4
10,603.0	2.02	84.62	10,591.5	-248.0	-53.5	1.47	0.37	-59.22	-43.7	-31.2
10,793.0	0.62	55.44	10,781.5	-247.1	-49.3	0.79	-0.74	-15.36	-26.9	-50.2
10,984.0	3.52	10.44	10,972.3	-240.7	-47.4	1.63	1.52	-23.56	9.9	-55.3
11,174.0	3.08	302.41	11,162.1	-232.3	-50.7	1.95	-0.23	-35.81	47.7	-17.0
11,365.0	0.88	290.90	11,353.0	-229.0	-56.4	1.16	-1.15	-6.03	43.6	-8.1
11,555.0	0.88	2.26	11,543.0	-227.0	-57.7	0.54	0.00	37.56	4.3	-42.5
11,677.0	0.70	8.42	11,664.9	-225.3	-57.5	0.16	-0.15	5.05	-1.9	-42.6
11,757.0	0.26	339.32	11,744.9	-224.7	-57.5	0.61	-0.55	-36.37	18.4	-38.4
11,850.0	0.95	303.05	11,837.9	-224.1	-58.3	0.82	0.75	-39.00	36.7	-20.2
KOP, MD:11850.0, TVD:11837.9, N/S:-224.1, E/W:-58.3, INC:0.95										
11,852.0	0.97	302.65	11,839.9	-224.0	-58.3	0.82	0.80	-9.77	36.7	-20.1
11,947.0	11.61	357.69	11,934.3	-214.0	-59.3	11.66	11.20	57.73	-0.2	-40.7
12,043.0	21.19	2.17	12,026.2	-187.0	-59.1	10.06	9.98	4.67	-6.9	-40.9
12,083.7	27.81	359.93	12,063.3	-170.1	-58.8	16.42	16.26	-5.50	-6.8	-41.5
FTP Crossing, MD:12083.7, TVD:12063.3, N/S:-170.1, E/W:-58.8, INC:27.81										
12,138.0	36.67	358.13	12,109.1	-141.2	-59.4	16.42	16.32	-3.32	-9.5	-41.4
12,233.0	50.56	351.89	12,177.8	-76.2	-65.5	15.29	14.62	-6.57	-17.1	-37.2
12,252.1	52.62	351.86	12,189.6	-61.4	-67.6	10.83	10.83	-0.14	-19.6	-35.3
FTP(GD 21 FC #706H)										
12,328.0	60.85	351.77	12,231.2	1.4	-76.6	10.83	10.83	-0.12	-28.8	-27.0
12,423.0	64.54	352.65	12,274.8	85.0	-88.1	3.97	3.88	0.93	-32.1	-15.4
12,519.0	72.19	355.02	12,310.2	173.7	-97.6	8.29	7.97	2.47	-24.1	-5.4
12,614.0	79.40	357.39	12,333.5	265.5	-103.6	7.96	7.59	2.49	-8.6	0.5



**EOG Resources**  
Midland PVA

Company:	EOG Resources - Midland	Local Co-ordinate Reference:	Well #706H
Project:	Lea County, NM (NAD 83 NME)	TVD Reference:	KB = 25 @ 3395.0usft
Site:	Green Drake 21 Fed Com	MD Reference:	KB = 25 @ 3395.0usft
Well:	#706H	North Reference:	Grid
Wellbore:	OH	Survey Calculation Method:	Minimum Curvature
Design:	OH	Database:	EDM

MD (usft)	Inc (°)	Azi (azimuth) (°)	TVD (usft)	N/S (usft)	E/W (usft)	DLeg (°/100usft)	Build (°/100usft)	Turn (°/100usft)	High to Plan (usft)	Right to Plan (usft)
12,709.0	90.48	356.87	12,341.9	359.9	-108.4	11.68	11.66	-0.55	-1.1	4.6
12,804.0	91.36	356.51	12,340.3	454.7	-113.9	1.00	0.93	-0.38	-3.5	9.4
12,900.0	91.63	358.89	12,337.8	550.6	-117.7	2.49	0.28	2.48	-6.9	12.7
12,995.0	89.69	359.85	12,336.7	645.6	-118.8	2.28	-2.04	1.01	-8.8	13.1
13,090.0	84.86	357.39	12,341.2	740.4	-121.0	5.70	-5.08	-2.59	-5.2	14.7
13,185.0	84.33	358.01	12,350.2	834.9	-124.8	0.86	-0.56	0.65	2.8	17.9
13,336.0	88.29	359.60	12,359.9	985.5	-128.0	2.83	2.62	1.05	11.2	20.0
13,431.0	90.92	359.86	12,360.6	1,080.5	-128.4	2.78	2.77	0.27	11.0	19.9
13,526.0	92.15	0.48	12,358.0	1,175.5	-128.1	1.45	1.29	0.65	7.6	19.0
13,622.0	90.66	1.44	12,355.7	1,271.4	-126.5	1.85	-1.55	1.00	4.4	16.7
13,717.0	89.43	1.09	12,355.6	1,366.4	-124.4	1.35	-1.29	-0.37	3.4	14.0
13,812.0	88.20	359.77	12,357.6	1,461.4	-123.7	1.90	-1.29	-1.39	4.5	12.7
13,907.0	89.60	359.16	12,359.4	1,556.4	-124.6	1.61	1.47	-0.64	5.5	12.9
14,003.0	88.55	358.54	12,360.9	1,652.3	-126.5	1.27	-1.09	-0.65	6.1	14.2
14,098.0	89.16	358.63	12,362.8	1,747.3	-128.9	0.65	0.64	0.09	7.2	16.0
14,193.0	89.78	358.72	12,363.7	1,842.2	-131.1	0.66	0.65	0.09	7.2	17.5
14,288.0	90.04	0.30	12,363.9	1,937.2	-131.9	1.69	0.27	1.66	6.5	17.7
14,384.0	88.46	0.83	12,365.1	2,033.2	-130.9	1.74	-1.65	0.55	6.8	16.1
14,479.0	89.87	0.30	12,366.5	2,128.2	-130.0	1.59	1.48	-0.56	7.3	14.6
14,574.0	89.60	358.81	12,368.9	2,223.2	-130.7	1.59	-0.28	-1.57	6.9	14.7
14,669.0	92.95	0.39	12,364.8	2,318.2	-131.4	3.90	3.53	1.68	3.9	14.7
14,764.0	92.59	1.00	12,360.2	2,413.0	-130.3	0.74	-0.38	0.64	-1.5	13.0
14,860.0	89.60	1.27	12,358.4	2,509.0	-128.4	3.13	-3.11	0.28	-4.2	10.4
14,899.6	88.50	1.89	12,359.0	2,548.5	-127.3	3.18	-2.77	1.57	-3.9	9.1
TGTW1(GD 21 FC #706H)										
14,955.0	86.97	2.76	12,361.2	2,603.9	-125.0	3.18	-2.77	1.57	-2.2	6.5
15,050.0	85.47	0.48	12,367.5	2,698.6	-122.3	2.87	-1.58	-2.40	3.2	3.2



EOG Resources  
Midland PVA

Company:	EOG Resources - Midland	Local Co-ordinate Reference:	Well #706H
Project:	Lea County, NM (NAD 83 NME)	TVD Reference:	KB = 25 @ 3395.0usft
Site:	Green Drake 21 Fed Com	MD Reference:	KB = 25 @ 3395.0usft
Well:	#706H	North Reference:	Grid
Wellbore:	OH	Survey Calculation Method:	Minimum Curvature
Design:	OH	Database:	EDM

MD (usft)	Inc (°)	Azi (azimuth) (°)	TVD (usft)	N/S (usft)	E/W (usft)	DLeg (°/100usft)	Build (°/100usft)	Turn (°/100usft)	High to Plan (usft)	Right to Plan (usft)
15,145.0	86.26	358.81	12,374.4	2,793.4	-122.9	1.94	0.83	-1.76	9.3	3.1
15,241.0	85.91	358.28	12,380.9	2,889.1	-125.4	0.66	-0.36	-0.55	15.1	4.9
15,336.0	86.00	358.63	12,387.6	2,983.8	-127.9	0.38	0.09	0.37	21.0	6.9
15,431.0	89.25	358.98	12,391.5	3,078.7	-129.9	3.44	3.42	0.37	24.1	8.2
15,526.0	90.84	359.24	12,391.5	3,173.7	-131.4	1.70	1.67	0.27	23.2	9.1
15,622.0	91.36	0.12	12,389.6	3,269.7	-131.9	1.06	0.54	0.92	20.6	9.0
15,717.0	89.25	0.48	12,389.1	3,364.7	-131.4	2.25	-2.22	0.38	19.3	7.8
15,812.0	90.22	359.51	12,389.6	3,459.7	-131.4	1.44	1.02	-1.02	19.0	7.2
15,907.0	89.25	359.95	12,390.0	3,554.7	-131.9	1.12	-1.02	0.46	18.6	7.1
16,003.0	87.93	0.21	12,392.4	3,650.6	-131.7	1.40	-1.37	0.27	20.2	6.3
16,098.0	88.64	0.39	12,395.2	3,745.6	-131.2	0.77	0.75	0.19	22.2	5.2
16,193.0	89.16	1.00	12,397.0	3,840.6	-130.1	0.84	0.55	0.64	23.2	3.4
16,288.0	91.36	1.18	12,396.6	3,935.6	-128.3	2.32	2.32	0.19	22.0	1.0
16,383.0	89.25	359.77	12,396.1	4,030.5	-127.5	2.67	-2.22	-1.48	20.7	-0.4
16,479.0	87.76	0.74	12,398.6	4,126.5	-127.1	1.85	-1.55	1.01	22.4	-1.5
16,574.0	91.19	5.05	12,399.5	4,221.3	-122.3	5.80	3.61	4.54	22.5	-6.9
16,669.0	89.25	2.50	12,399.1	4,316.1	-116.0	3.37	-2.04	-2.68	21.4	-13.8
16,764.0	86.61	0.56	12,402.5	4,411.0	-113.5	3.45	-2.78	-2.04	24.0	-17.0
16,860.0	85.91	0.04	12,408.8	4,506.8	-113.0	0.91	-0.73	-0.54	29.4	-18.1
16,955.0	87.23	0.04	12,414.5	4,601.6	-112.9	1.39	1.39	0.00	34.3	-18.8
17,050.0	88.29	0.39	12,418.2	4,696.6	-112.5	1.17	1.12	0.37	37.3	-19.8
17,145.0	89.52	359.60	12,420.0	4,791.5	-112.6	1.54	1.29	-0.83	38.3	-20.4
17,241.0	90.13	359.51	12,420.3	4,887.5	-113.3	0.64	0.64	-0.09	37.8	-20.3
17,336.0	88.29	358.81	12,421.6	4,982.5	-114.7	2.07	-1.94	-0.74	38.3	-19.5
17,431.0	87.05	358.19	12,425.5	5,077.4	-117.2	1.46	-1.31	-0.65	41.4	-17.6
17,526.0	87.05	357.84	12,430.4	5,172.2	-120.5	0.37	0.00	-0.37	45.5	-15.0
17,622.0	86.17	357.49	12,436.0	5,268.0	-124.4	0.99	-0.92	-0.36	50.4	-11.7



EOG Resources  
Midland PVA

Company:	EOG Resources - Midland					Local Co-ordinate Reference:			Well #706H		
Project:	Lea County, NM (NAD 83 NME)					TVD Reference:			KB = 25 @ 3395.0usft		
Site:	Green Drake 21 Fed Com					MD Reference:			KB = 25 @ 3395.0usft		
Well:	#706H					North Reference:			Grid		
Wellbore:	OH					Survey Calculation Method:			Minimum Curvature		
Design:	OH					Database:			EDM		
Survey											
MD (usft)	Inc (°)	Azi (azimuth) (°)	TVD (usft)	N/S (usft)	E/W (usft)	DLeg (°/100usft)	Build (°/100usft)	Turn (°/100usft)	High to Plan (usft)	Right to Plan (usft)	
17,717.0	95.23	359.68	12,434.9	5,362.8	-126.7	9.81	9.54	2.31	48.4	-10.0	
17,812.0	92.51	359.95	12,428.5	5,457.6	-127.0	2.88	-2.86	0.28	41.2	-10.3	
17,907.0	89.87	0.74	12,426.5	5,552.6	-126.4	2.90	-2.78	0.83	38.4	-11.5	
18,002.0	86.97	0.12	12,429.1	5,647.5	-125.7	3.12	-3.05	-0.65	40.3	-12.8	
18,098.0	87.32	0.12	12,433.9	5,743.4	-125.5	0.36	0.36	0.00	44.2	-13.7	
18,193.0	88.11	0.65	12,437.7	5,838.3	-124.9	1.00	0.83	0.56	47.2	-14.9	
18,288.0	89.34	1.18	12,439.8	5,933.3	-123.4	1.41	1.29	0.56	48.6	-17.1	
18,383.0	90.57	1.18	12,439.9	6,028.3	-121.4	1.29	1.29	0.00	47.8	-19.6	
18,479.0	91.89	1.16	12,437.8	6,124.2	-119.5	1.38	1.37	-0.02	45.0	-22.2	
18,500.0	91.93	1.43	12,437.1	6,145.2	-119.0	1.31	0.19	1.29	44.1	-22.8	
TGT#2(GD 21 FC #706H)											
18,574.0	92.07	2.39	12,434.5	6,219.1	-116.5	1.31	0.19	1.29	41.7	-25.7	
18,669.0	91.28	359.31	12,431.8	6,314.1	-115.1	3.35	-0.83	-3.24	39.5	-27.8	
18,761.0	92.59	358.43	12,428.6	6,406.0	-116.9	1.72	1.42	-0.96	36.9	-26.6	
18,856.0	88.72	357.82	12,427.6	6,500.9	-120.0	4.12	-4.07	-0.64	36.4	-24.1	
18,951.0	88.81	357.55	12,429.6	6,595.8	-123.9	0.30	0.09	-0.28	39.0	-20.9	
19,047.0	88.72	357.55	12,431.7	6,691.7	-128.0	0.09	-0.09	0.00	41.6	-17.4	
19,142.0	91.45	357.91	12,431.5	6,786.6	-131.7	2.90	2.87	0.38	42.1	-14.3	
19,237.0	91.36	357.29	12,429.2	6,881.5	-135.7	0.66	-0.09	-0.65	40.3	-11.0	
19,332.0	92.33	356.76	12,426.1	6,976.3	-140.6	1.16	1.02	-0.56	37.8	-6.7	
19,427.0	92.68	357.82	12,422.0	7,071.1	-145.1	1.17	0.37	1.12	34.2	-2.8	
19,522.0	92.77	357.82	12,417.5	7,165.9	-148.7	0.09	0.09	0.00	30.3	0.2	
19,617.0	92.68	357.64	12,413.0	7,260.8	-152.5	0.21	-0.09	-0.19	26.3	3.3	
19,712.0	93.12	357.47	12,408.2	7,355.6	-156.5	0.50	0.46	-0.18	22.1	6.8	
Last MWD Survey (MD=19712.0)											
19,896.0	93.12	357.47	12,398.1	7,539.1	-164.7	0.00	0.00	0.00	13.1	13.7	
Projection to Bit (MD=19896.0) - PBHL(GD 21 FC #706H)											



EOG Resources  
Midland PVA

Company:	EOG Resources - Midland	Local Co-ordinate Reference:	Well #706H
Project:	Lea County, NM (NAD 83 NME)	TVD Reference:	KB = 25 @ 3395.0usft
Site:	Green Drake 21 Fed Com	MD Reference:	KB = 25 @ 3395.0usft
Well:	#706H	North Reference:	Grid
Wellbore:	OH	Survey Calculation Method:	Minimum Curvature
Design:	OH	Database:	EDM

Design Annotations				
Measured Depth (usft)	Vertical Depth (usft)	Local Coordinates		Comment
		+N/-S (usft)	+E/-W (usft)	
11,850.0	11,837.9	-224.1	-58.3	KOP, MD:11850.0', TVD:11837.9', N/S:-224.1', E/W:-58.3', INC:0.95
12,083.7	12,063.3	-170.1	-58.8	FTP Crossing, MD:12083.7', TVD:12063.3', N/S:-170.1', E/W:-58.8', INC:27.81
19,712.0	12,408.2	7,355.6	-156.5	Last MWD Survey (MD=19712.0')
19,896.0	12,398.1	7,539.1	-164.7	Projection to Bit (MD=19896.0')

Checked By: \_\_\_\_\_ Approved By: \_\_\_\_\_ Date: \_\_\_\_\_

I certify this survey to be true and correct to the best of my belief and knowledge.

Kay Maddox      11/12/2020  
Signed                      Date



Lea County, NM (NAD 83 NME)

Green Drake 21 Fed Com #706H

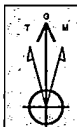
Plan #2

PROJECT DETAILS: Lea County, NM (NAD 83 NME)

Geodetic System: US State Plane 1983  
Datum: North American Datum 1983  
Ellipsoid: GRS 1980  
Zone: New Mexico Eastern Zone  
System Datum: Mean Sea Level

WELL DETAILS: #706H

KB = 25 @ 3395.0uoft 3370.0  
Northing 40412.00 Easting 775848.00 Latitude 32° 5' 34.354 N Longitude 103° 34' 33.335 W



Azimuths to Grid North  
True North: -0.40°  
Magnetic North: 6.26°

Magnetic Field  
Strength: 47532.6nT  
Dip Angle: 59.83°  
Date: 6/6/2020  
Model: IGRF2020

To convert a Magnetic Direction to a Grid Direction, Add 6.26°  
To convert a Magnetic Direction to a True Direction, Add 6.66° East  
To convert a True Direction to a Grid Direction, Subtract 0.40°

#### SECTION DETAILS

Sec	MD	Inc	Azi	TVD	+N/-S	+E/-W	Dleg	TFace	Vsect	Target
1	0.0	0.00	0.00	0.0	0.0	0.0	0.00	0.00	0.0	
2	1300.0	0.00	0.00	1300.0	0.0	0.0	0.00	0.00	0.0	
3	1499.9	4.00	204.35	1499.8	-6.4	-2.9	2.00	204.35	-6.3	
4	4778.4	4.00	204.35	4770.2	-214.6	-97.1	0.00	0.00	-212.7	
5	4978.3	0.00	0.00	4970.0	-221.0	-100.0	2.00	180.00	-219.0	
6	11872.8	0.00	0.00	11864.5	-221.0	-100.0	0.00	0.00	-219.0	
7	12618.4	89.47	359.62	12341.9	252.1	-103.1	12.00	359.62	254.1	TGT#1(GD 21 FC #706H)
8	14914.6	89.47	359.62	12363.0	2548.1	-118.2	0.00	0.00	2550.0	
9	14917.0	89.52	359.62	12363.0	2550.5	-118.2	2.00	0.00	2552.3	TGT#2(GD 21 FC #706H)
10	18511.1	89.52	359.62	12393.0	6144.4	-141.8	0.00	0.00	6146.0	
11	18552.0	90.34	359.62	12393.0	6185.3	-142.1	2.00	0.00	6186.9	
12	19907.8	90.34	359.62	12385.0	7541.0	-151.0	0.00	0.00	7542.5	PBHL(GD 21 FC #706H)

#### CASING DETAILS

No casing data is available

#### WELLBORE TARGET DETAILS (MAP CO-ORDINATES)

Name	TVD	+N/-S	+E/-W	Northing	Easting
Brashly Top(GD 21 FC #706H)	7487.0	-221.0	-100.0	40419.00	775748.00
FTP(GD 21 FC #706H)	12342.0	-171.0	-100.0	404241.00	775748.00
TGT#1(GD 21 FC #706H)	12363.0	2548.1	-118.2	408996.10	775729.81
PBHL(GD 21 FC #706H)	12393.0	7541.0	-151.0	411953.00	775827.00
TGT#2(GD 21 FC #706H)	12393.0	6144.4	-141.8	410556.40	775706.18

