

DISTRICT I
1825 N. French Dr., Hobbs, NM 88240
Phone (575) 393-6161 Fax: (575) 393-0720

DISTRICT II
811 S. First St., Artesia, NM 88210
Phone (575) 748-1283 Fax: (575) 748-9720

DISTRICT III
1000 Rio Brazos Rd., Aztec, NM 87410
Phone (505) 334-6178 Fax: (505) 334-6170

DISTRICT IV
1220 S. St. Francis Dr., Santa Fe, NM 87505
Phone (505) 476-3480 Fax: (505) 476-3482

State of New Mexico
Energy, Minerals and Natural Resources Department

Form C-102
Revised August 4, 2011

Submit one copy to appropriate
District Office

OIL CONSERVATION DIVISION
1220 South St. Francis Dr.
Santa Fe, New Mexico 87505

WELL LOCATION AND ACREAGE DEDICATION PLAT

☐ AMENDED REPORT

API Number 30-025-46808	Pool Code 96994	Pool Name PITCHFORK RANCH; WOLFCAMP, SOUTH
Property Code 327075	Property Name OCOTILLO SUNRISE	Well Number 411H
OGRID No. 371496	Operator Name SANTO PETROLEUM, LLC	Elevation 3334'

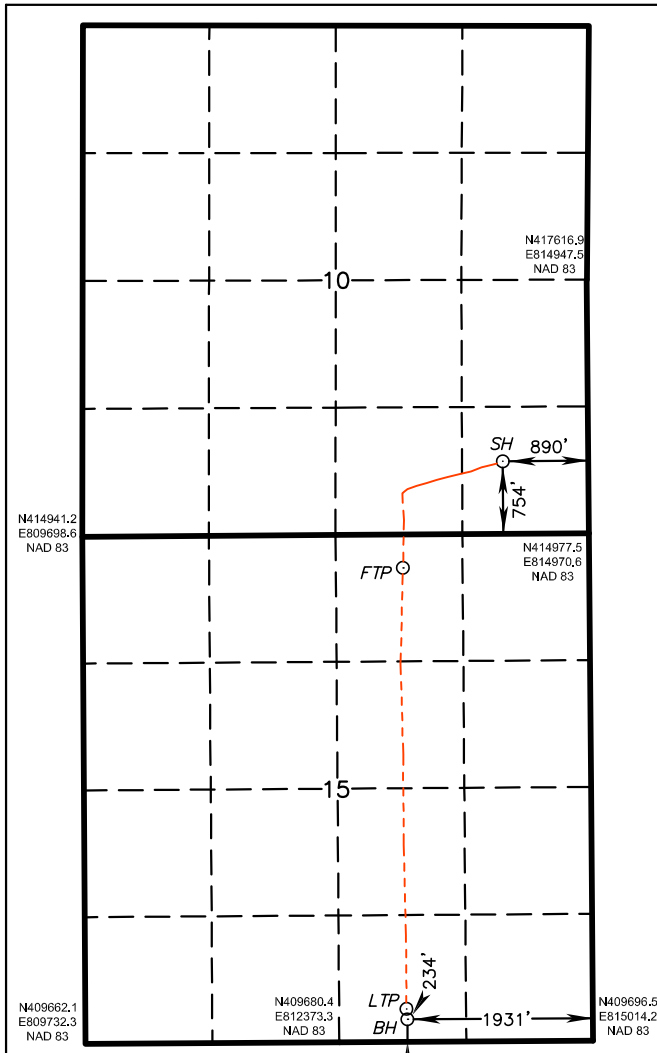
Surface Location

UL or lot No.	Section	Township	Range	Lot Idn	Feet from the	SOUTH/South line	Feet from the	East/West line	County
P	10	25 S	34 E		754	SOUTH	890	EAST	LEA

Bottom Hole Location If Different From Surface

UL or lot No.	Section	Township	Range	Lot Idn	Feet from the	SOUTH/South line	Feet from the	East/West line	County
O	15	25 S	34 E		234	SOUTH	1931	EAST	LEA
Dedicated Acres	Joint or Infill	Consolidation Code	Order No.						

NO ALLOWABLE WILL BE ASSIGNED TO THIS COMPLETION UNTIL ALL INTERESTS HAVE BEEN CONSOLIDATED
OR A NON-STANDARD UNIT HAS BEEN APPROVED BY THE DIVISION



SURFACE LOCATION

Lat - N 32.139841
Long - W 103.452181
NMSPCE- N 415725.3
E 814073.5
(NAD-83)

Lat - N 32.139715°
Long - W 103.451712°
NMSPCE- N 415667.2
E 772887.4
(NAD-27)

FIRST TAKE POINT
346 FNL & 1939 FEL
Lat - N 32.136820°
Long - W 103.455566°
NMSPCE- N 414618.1
E 813034.7
(NAD-83)

Lat - N 32.136695°
Long - W 103.455097°
NMSPCE- N 414560.0
E 771848.5
(NAD-27)

LAST TAKE POINT
342 FSL & 1939 FEL
Lat - N 32.124199°
Long - W 103.455565°
NMSPCE- N 410026.5
E 813072.5
(NAD-83)

Lat - N 32.124074°
Long - W 103.455097°
NMSPCE- N 409968.6
E 771886.1
(NAD-27)

BOTTOM HOLE LOCATION
Lat - N 32.123903°
Long - W 103.455540°
NMSPCE- N 409918.9
E 813080.9
(NAD-83)

Lat - N 32.123778°
Long - W 103.455072°
NMSPCE- N 409861.0
E 771894.5
(NAD-27)

OPERATOR CERTIFICATION

I hereby certify that the information contained herein is true and complete to the best of my knowledge and belief, and that this organization either owns a working interest or unLEASEd mineral interest in the land including the proposed bottom hole location or has a right to drill this well at this location pursuant to a contract with an owner of such a mineral or working interest, or to a voluntary pooling agreement or a compulsory pooling order heretofore entered by the division.

Signature _____ Date 9/20/2020

Printed Name Lelan J Anders
Email Address LAnders@SantoPetroleum.com

SURVEYOR CERTIFICATION

I hereby certify that the well location shown on this plat was plotted from field notes of actual surveys made by me or under my supervision, and that the same is true and correct to the best of my belief.

Date Surveyed AUGUST 19, 2020
Signature & Seal of Professional Surveyor 7977

Certificate No. 7977
BASIN SURVEYS

0' 1000' 2000' 3000' 4000' N
SCALE: 1" = 2000'
WO Num.: 35155