

DISTRICT I
1625 N. FRENCH DR., HOBBS, NM 88240
Phone: (575) 393-6161 Fax: (575) 393-0720

DISTRICT II
811 S. FIRST ST., ARTESIA, NM 88210
Phone: (575) 746-1283 Fax: (575) 746-9720

DISTRICT III
1000 RIO BRAZOS RD., AZTEC, NM 87410
Phone: (505) 334-6178 Fax: (505) 334-6170

DISTRICT IV
1220 S. ST. FRANCIS DR., SANTA FE, NM 87505
Phone: (505) 476-3460 Fax: (505) 476-3462

State of New Mexico
Energy, Minerals & Natural Resources Department
OIL CONSERVATION DIVISION
1220 SOUTH ST. FRANCIS DR.
Santa Fe, New Mexico 87505

Form C-102
Revised August 1, 2011
Submit one copy to appropriate
District Office

☒ AMENDED REPORT
As Drilled

WELL LOCATION AND ACREAGE DEDICATION PLAT

API Number 30-025-46985	Pool Code 98135	Pool Name WC-025 G-09 S243310P; UPPER WOLFCAMP
Property Code 40400	Property Name SEBASTIAN FEDERAL COM	Well Number 703H
OGRID No. 229137	Operator Name COG OPERATING, LLC	Elevation 3585.1'

Surface Location

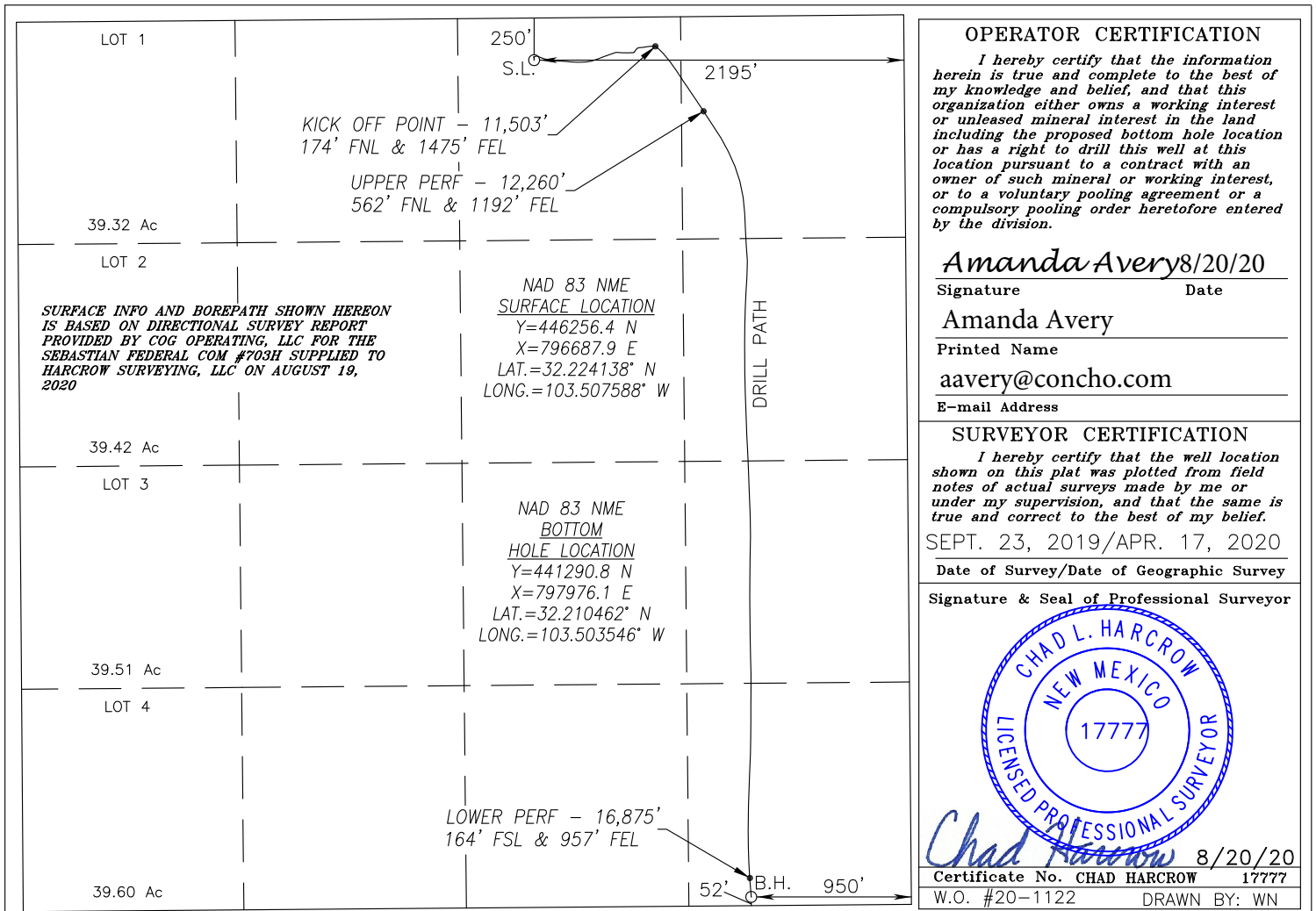
UL or lot No.	Section	Township	Range	Lot Idn	Feet from the	North/South line	Feet from the	East/West line	County
B	18	24-S	34-E		250	NORTH	2195	EAST	LEA

Bottom Hole Location If Different From Surface

SL

UL or lot No.	Section	Township	Range	Lot Idn	Feet from the	North/South line	Feet from the	East/West line	County
P	18	24-S	34-E		52	SOUTH	950	EAST	LEA
Dedicated Acres 640	Joint or Infill	Consolidation Code	Order No.						

NO ALLOWABLE WILL BE ASSIGNED TO THIS COMPLETION UNTIL ALL INTERESTS HAVE BEEN CONSOLIDATED
OR A NON-STANDARD UNIT HAS BEEN APPROVED BY THE DIVISION



Intent ☐ As Drilled ☒

API # 30-025-46985		
Operator Name: COG OPERATING, LLC	Property Name: SEBASTIAN FEDERAL COM	Well Number 703H

Kick Off Point (KOP)

UL	Section	Township	Range	Lot	Feet	From N/S	Feet	From E/W	County
B	18	24S	34E		174	NORTH	1475	EAST	LEA
Latitude 32.224348					Longitude -103.505260				NAD 83

First Take Point (FTP)

UL	Section	Township	Range	Lot	Feet	From N/S	Feet	From E/W	County
A	18	24S	34E		562	NORTH	1192	EAST	LEA
Latitude 32.223282					Longitude -103.504344				NAD 83

Last Take Point (LTP)

UL	Section	Township	Range	Lot	Feet	From N/S	Feet	From E/W	County
P	18	24S	34E		164	SOUTH	957	EAST	LEA
Latitude 32.210770					Longitude -103.503570				NAD 83

Is this well the defining well for the Horizontal Spacing Unit? ☐

Is this well an infill well? ☐

If infill is yes please provide API if available, Operator Name and well number for Defining well for Horizontal Spacing Unit.

API # 30-025-46988		
Operator Name: COG Operating LLC	Property Name: Sebastian Federal Com	Well Number 703H

KZ 06/29/2018