

DISTRICT I
1625 N. FRENCH DR., HOBBS, NM 88240
Phone: (575) 393-6161 Fax: (575) 393-0720

DISTRICT II
511 S. FIRST ST., ARTESIA, NM 88210
Phone: (575) 746-1283 Fax: (575) 746-9720

DISTRICT III
1000 RIO BRAZOS RD., AZTEC, NM 87410
Phone: (505) 334-6178 Fax: (505) 334-6170

DISTRICT IV
1220 S. ST. FRANCIS DR., SANTA FE, NM 87505
Phone: (505) 476-3460 Fax: (505) 476-3462

State of New Mexico
Energy, Minerals & Natural Resources Department
OIL CONSERVATION DIVISION
1220 SOUTH ST. FRANCIS DR.
Santa Fe, New Mexico 87505

Form C-102
Revised August 1, 2011
Submit one copy to appropriate
District Office

☒ AMENDED REPORT
As Drilled

WELL LOCATION AND ACREAGE DEDICATION PLAT

| | | | |
|----------------------------|---------------------------------------|--------------------|--|
| API Number 30-025-46760 | | Pool Code 98094 | Pool Name Bobcat Draw; Upper Wolfcamp |
| Property Code 39912 | Property Name GUNNER 8 FEDERAL COM | | Well Number 705H |
| OGRID No. 229137 | Operator Name COG OPERATING, LLC | | Elevation 3333.0' |

Surface Location

| | | | | | | | | | |
|---------------|---------|----------|-------|---------|---------------|------------------|---------------|----------------|--------|
| UL or lot No. | Section | Township | Range | Lot Idn | Feet from the | North/South line | Feet from the | East/West line | County |
| D | 5 | 26-S | 34-E | | 250 | NORTH | 530 | WEST | LEA |

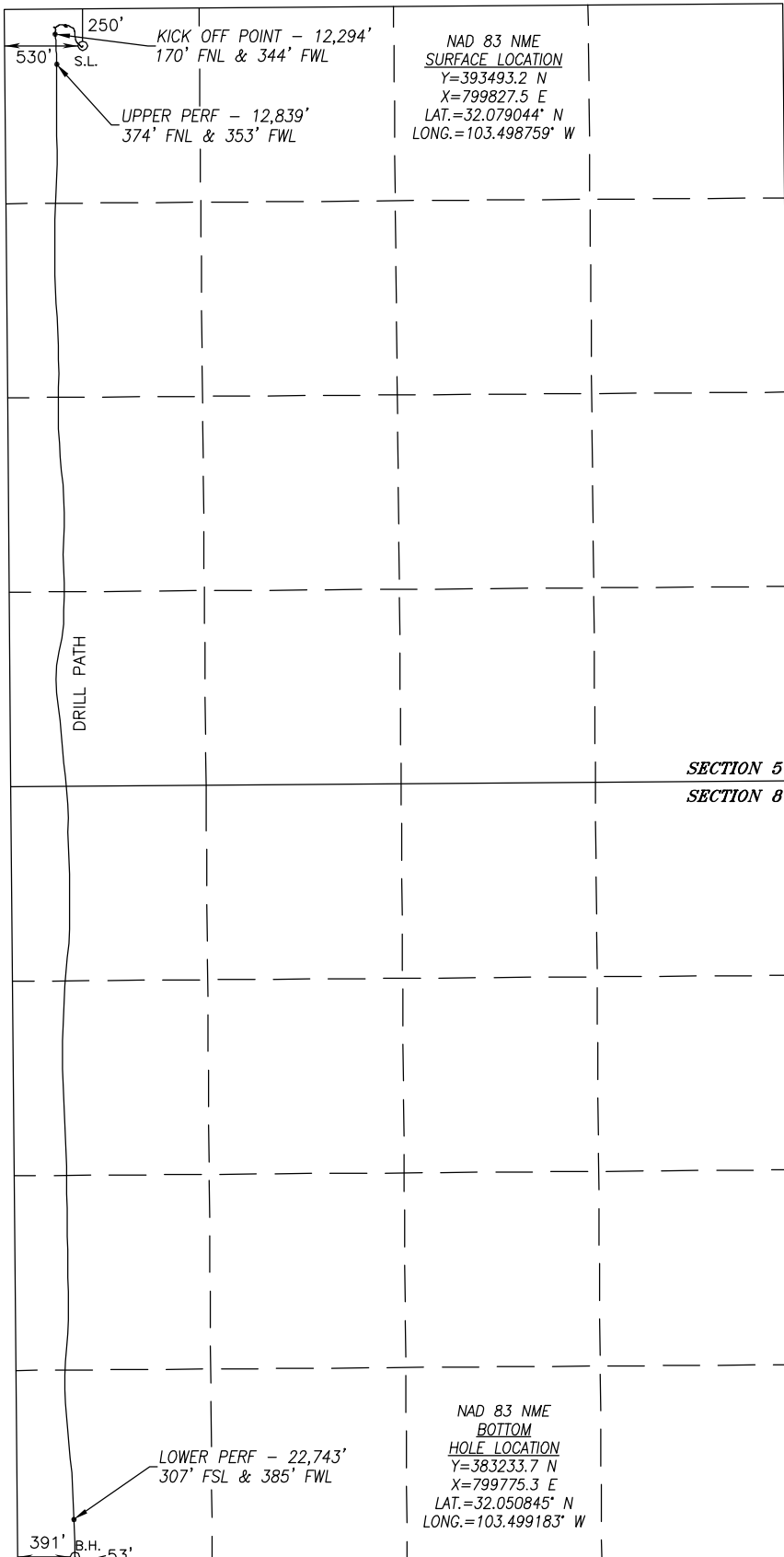
Bottom Hole Location If Different From Surface

| | | | | | | | | | |
|------------------------|-----------------|--------------------|-----------|---------|---------------|------------------|---------------|----------------|--------|
| UL or lot No. | Section | Township | Range | Lot Idn | Feet from the | North/South line | Feet from the | East/West line | County |
| M | 8 | 26-S | 34-E | | 53 | SOUTH | 391 | WEST | LEA |
| Dedicated Acres 640 | Joint or Infill | Consolidation Code | Order No. | | | | | | |

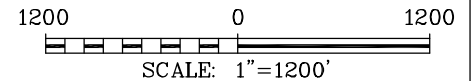
NO ALLOWABLE WILL BE ASSIGNED TO THIS COMPLETION UNTIL ALL INTERESTS HAVE BEEN CONSOLIDATED
OR A NON-STANDARD UNIT HAS BEEN APPROVED BY THE DIVISION

SEE PAGE 2

| | | |
|-------------------------|---------------------------------------|----------------------|
| Property Code 229137 | Property Name GUNNER 8 FEDERAL COM | Well Number 705H |
| OGRID No. 229137 | Operator Name COG OPERATING, LLC | Elevation 3333.0' |



SURFACE INFO AND BOREPATH SHOWN HEREON IS BASED ON DIRECTIONAL SURVEY REPORT PROVIDED BY COG OPERATING, LLC FOR THE GUNNER 8 FEDERAL COM #705H SUPPLIED TO HARCROW SURVEYING, LLC ON JANUARY 4, 2021



OPERATOR CERTIFICATION

I hereby certify that the information herein is true and complete to the best of my knowledge and belief, and that this organization either owns a working interest or unleased mineral interest in the land including the proposed bottom hole location or has a right to drill this well at this location pursuant to a contract with an owner of such mineral or working interest, or to a voluntary pooling agreement or a compulsory pooling order heretofore entered by the division.

Amanda Avery 1/14/21

Signature Date

Amanda Avery

Printed Name

aavery@concho.com

E-mail Address

SURVEYOR CERTIFICATION

I hereby certify that the well location shown on this plat was plotted from field notes of actual surveys made by me or under my supervision, and that the same is true and correct to the best of my belief.

NOV. 15, 2019/JUNE 1, 2020

Date of Survey/Date of Geographic Survey

Signature & Seal of Professional Surveyor



Chad Harcrow 1/4/21

Certificate No. CHAD HARCROW 17777

Intent ☐ As Drilled ☐

| | | |
|----------------|----------------|-------------|
| API # | | |
| Operator Name: | Property Name: | Well Number |

Kick Off Point (KOP)

| | | | | | | | | | |
|----------|---------|----------|-------|-----|-----------|----------|------|----------|--------|
| UL | Section | Township | Range | Lot | Feet | From N/S | Feet | From E/W | County |
| Latitude | | | | | Longitude | | | | NAD |

First Take Point (FTP)

| | | | | | | | | | |
|----------|---------|----------|-------|-----|-----------|----------|------|----------|--------|
| UL | Section | Township | Range | Lot | Feet | From N/S | Feet | From E/W | County |
| Latitude | | | | | Longitude | | | | NAD |

Last Take Point (LTP)

| | | | | | | | | | |
|----------|---------|----------|-------|-----|-----------|----------|------|----------|--------|
| UL | Section | Township | Range | Lot | Feet | From N/S | Feet | From E/W | County |
| Latitude | | | | | Longitude | | | | NAD |

Is this well the defining well for the Horizontal Spacing Unit? ☐

Is this well an infill well? ☐

If infill is yes please provide API if available, Operator Name and well number for Defining well for Horizontal Spacing Unit.

| | | |
|----------------|----------------|-------------|
| API # | | |
| Operator Name: | Property Name: | Well Number |