

District I  
1625 N French Dr, Hobbs, NM 88240  
District II  
1301 W Grand Avenue, Artesia, NM 88210  
District III  
1000 Rio Brazos Road, Aztec, NM 87410  
District IV  
1220 S. St Francis Dr, Santa Fe, NM 87505

State of New Mexico  
Energy Minerals and Natural Resources

Form C-101  
May 27, 2004

Submit to appropriate District Office

☐ AMENDED REPORT

Oil Conservation Division  
1220 South St. Francis Dr.  
Santa Fe, NM 87505

APPLICATION FOR PERMIT TO DRILL, RE-ENTER, DEEPEN, PLUGBACK, OR ADD A ZONE

|  |  |                                       |
|--|--|---------------------------------------|
| <sup>1</sup> Operator Name and Address<br>V-F Petroleum Inc.,<br>P.O. Box 1889, Midland, Texas 79702 |  | <sup>2</sup> OGRID Number<br>024010   |
| <sup>3</sup> Property Code<br>6280 38291   |  | <sup>4</sup> Property Name<br>Uno Mas |
| <sup>5</sup> Proposed Pool 1<br>Shoebar Mississippian  |  | <sup>6</sup> Well No.<br>1            |
| <sup>7</sup> Surface Location<br>South (GAS) (85215)   |  | <sup>10</sup> Proposed Pool 2         |

| UL or lot no | Section | Township | Range | Lot Idn | Feet from the | North/South line | Feet from the | East/West line | County |
|--------------|---------|----------|-------|---------|---------------|------------------|---------------|----------------|--------|
| C            | 12      | 17-S     | 35-E  |         | 660'          | North            | 1,980'        | West           | Lea    |

| UL or lot no | Section | Township | Range | Lot Idn | Feet from the | North/South line | Feet from the | East/West line | County |
|--------------|---------|----------|-------|---------|---------------|------------------|---------------|----------------|--------|
|              |         |          |       |         |               |                  |               |                |        |

Additional Well Information

|   |   |   |                                    |  |
|---|---|---|------------------------------------|--|
| <sup>11</sup> Work Type Code<br>E   | <sup>12</sup> Well Type Code<br>G       | <sup>13</sup> Cable/Rotary<br>R                 | <sup>14</sup> Lease Type Code<br>S | <sup>15</sup> Ground Level Elevation<br>3,936' |
| <sup>16</sup> Multiple<br>N   | <sup>17</sup> Proposed Depth<br>13,103' | <sup>18</sup> Formation<br>Mississippian        | <sup>19</sup> Contractor<br>N/A    | <sup>20</sup> Spud Date<br>10/11               |
| Depth to Groundwater<br>50'   |   | Distance from nearest fresh water well<br>3,000 |                                    | Distance from nearest surface water<br>3,000   |
| Pit: Liner. Synthetic <input type="checkbox"/> ___mils thick Clay <input type="checkbox"/> Pit Volume ___bbls Drilling ___<br>Closed-Loop System <input checked="" type="checkbox"/> Fresh Water <input type="checkbox"/> Brine <input type="checkbox"/> Diesel/Oil-based <input type="checkbox"/> Gas/Air <input type="checkbox"/> |   |   |                                    |  |

<sup>21</sup> Proposed Casing and Cement Program

| Hole Size  | *Casing Size | Casing weight/foot | Setting Depth | Sacks of Cement | Estimated TOC |
|--|--------------|--------------------|---------------|-----------------|---------------|
| 17 1/2"  | 13 3/8"      | 48#                | 453'          | 500             | Surface       |
| 12 1/4"  | 9 5/8"       | 40#                | 4,981'        | 2,600           | Surface       |
| 8 1/2"   | 4 1/2"       | 11.6 & 13.5#       | 13,102'       | 1,025           | 9,000'        |
| Permit Expires 2 Years From Approval<br>Date Unless Labeled Underway<br>Re-Entry |              |                    |               |                 |               |

<sup>22</sup> Describe the proposed program. If this application is to DEEPEN or PLUG BACK, give the data on the blowout prevention program, if any. Use additional sheets if necessary.

All casing strings are in place. The 4 1/2" casing was cut and pulled from 5,990'. Propose to drill all cement plugs to top of 4 1/2". Dress off top of 4 1/2". Tie 4 1/2" production casing back to surface using lead seal casing bowl. Clean out inside 4 1/2" to 13,080'. Re stimulate existing Mississippian perfs 13,024' - 13,034' and 13,040' - 13,044'. Return to production. This work will be performed using a Basic Well Service rig and a reverse unit. The BOP stack will be an 11" 5,000# Double Ram BOP with a 3,000# annular capable of sealing off on the O.D. of the 2 7/8" drill pipe. After the 4 1/2" casing is tied back to surface, a 7 1/16" 5,000# BOP will be installed with a 3,000# annular on top. Fresh water mud will be used until the 4 1/2" is tied back. Work inside the 4 1/2" will use KCl water for drilling and completion fluid. The 11" BOP stack will be tested to 2,000#. The 7 1/16" BOP stack will be tested to 3,000#.

|  |                         |  |  |
|--|-------------------------|--|--|
| <sup>23</sup> I hereby certify that the information given above is true and complete to the best of my knowledge and belief. I further certify that the drilling pit will be constructed according to NMOCD guidelines <input checked="" type="checkbox"/> , a general permit <input type="checkbox"/> , or an (attached) alternative OCD-approved plan <input type="checkbox"/> . |                         | OIL CONSERVATION DIVISION                                |  |
| Signature<br>M.W. Luna   |                         | Approved by<br>  |  |
| Printed name<br>M.W. Luna  |                         | Title<br>PETROLEUM ENGINEER                              |  |
| Title<br>Drilling Superintendent   |                         | Approval Date<br>SEP 07 2011                             |  |
| E-mail Address<br>skl@vfpetroleum.com  |                         | Expiration Date  |  |
| Date<br>9/2/11   | Phone<br>(432) 683-3344 | Conditions of Approval Attached <input type="checkbox"/> |  |

SEP 07 2011

HOBBS OCD

District I

1625 N. French Dr., Hobbs, NM 88240

District II

1301 W. Grand Avenue, Artesia, NM 88210

District III

1000 Rio Brazos Rd., Aztec, NM 87410

District IV

1220 S. St. Francis Dr., Santa Fe, NM 87505

State of New Mexico

Energy, Minerals &amp; Natural Resources Department

OIL CONSERVATION DIVISION

1220 South St. Francis Dr.

Santa Fe, NM 87505

Form C-102

Revised October 15, 2009

Submit one copy to appropriate

District Office

☐ AMENDED REPORT

## WELL LOCATION AND ACREAGE DEDICATION PLAT

|  |  |  |
|--|--|--|
| <sup>1</sup> API Number<br>30-025-26593  | <sup>2</sup> Pool Code<br>85215                  | <sup>3</sup> Pool Name<br>Shoe Bar Mississippian |
| <sup>4</sup> Property Code<br>6200 38791 | <sup>5</sup> Property Name<br>Uno Mas            | <sup>6</sup> Well Number<br>1                    |
| <sup>7</sup> OGRID No.<br>24010          | <sup>8</sup> Operator Name<br>V-F Petroleum Inc. | <sup>9</sup> Elevation<br>3,936'                 |

<sup>10</sup> Surface Location

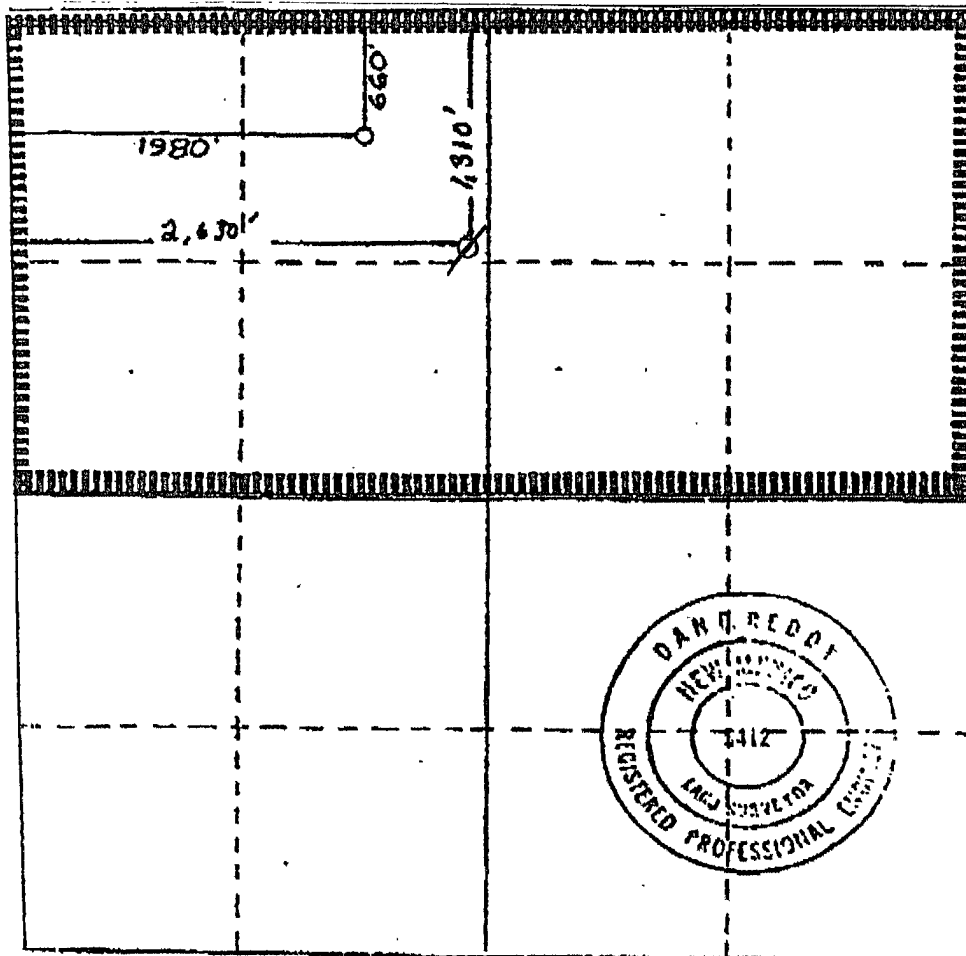
| UL or lot no. | Section | Township | Range | Lot Idn | Feet from the | North/South line | Feet from the | East/West line | County |
|---------------|---------|----------|-------|---------|---------------|------------------|---------------|----------------|--------|
| C             | 12      | 17-S     | 35-E  |         | 660           | North            | 1,980         | West           | Lea    |

<sup>11</sup> Bottom Hole Location If Different From Surface

| UL or lot no. | Section | Township | Range | Lot Idn | Feet from the | North/South line | Feet from the | East/West line | County |
|---------------|---------|----------|-------|---------|---------------|------------------|---------------|----------------|--------|
|               |         |          |       |         |               |                  |               |                |        |

|                                      |                                    |                                  |                         |
|--------------------------------------|------------------------------------|----------------------------------|-------------------------|
| <sup>12</sup> Dedicated Acres<br>320 | <sup>13</sup> Joint or Infill<br>N | <sup>14</sup> Consolidation Code | <sup>15</sup> Order No. |
|--------------------------------------|------------------------------------|----------------------------------|-------------------------|

No allowable will be assigned to this completion until all interests have been consolidated or a non-standard unit has been approved by the division

<sup>17</sup> OPERATOR CERTIFICATION

I hereby certify that the information contained herein is true and complete to the best of my knowledge and belief, and that this organization either owns a working interest or unleased mineral interest in the land including the proposed bottom hole location or has a right to drill this well at this location pursuant to a contract with an owner of such a mineral or working interest, or to a voluntary pooling agreement or a compulsory pooling order heretofore entered by the division.

*M. W. Luna* 9/2/11  
Signature Date

M. W. Luna  
Printed Name

<sup>18</sup> SURVEYOR CERTIFICATION

I hereby certify that the well location shown on this plat was plotted from field notes of actual surveys made by me or under my supervision, and that the same is true and correct to the best of my belief

Date Surveyed

Nov. 14, 1970

Registered Professional Surveyor  
under New Mexico

*Dan R. Reddy*  
Dan R. Reddy  
NM PELS #3412