

DISTRICT I
1625 N. FRENCH DR., HOBBS, NM 88240

HOBBS OCD

State of New Mexico
Energy, Minerals and Natural Resources Department

JW

Form C-102

DISTRICT II
1301 W GRAND AVENUE, ARTESIA, NM 88210

SEP 02 2011

OIL CONSERVATION DIVISION

1220 SOUTH ST. FRANCIS DR.

Santa Fe, New Mexico 87505

Revised October 12, 2005
Submit to Appropriate District Office
State Lease - 4 Copies
Fee Lease - 3 Copies

DISTRICT III
1000 Rio Brazos Rd., Aztec, NM 87410

RECEIVED

DISTRICT IV
1220 S. ST. FRANCIS DR., SANTA FE, NM 87505

WELL LOCATION AND ACREAGE DEDICATION PLAT

☐ AMENDED REPORT

API Number 30-025-40264	Pool Code 22900	Pool Name Eunice; Bli-Tu-Dri; North
Property Code 35023	Property Name EAST BLINEBRY DRINKARD UNIT	Well Number 105
OGRID No. 873	Operator Name APACHE CORPORATION	Elevation 3530'

Surface Location

UL or lot No.	Section	Township	Range	Lot Idn	Feet from the	North/South line	Feet from the	East/West line	County
14	1	21-S	37-E		2650	SOUTH	2490	WEST	LEA

Bottom Hole Location If Different From Surface

UL or lot No.	Section	Township	Range	Lot Idn	Feet from the	North/South line	Feet from the	East/West line	County

Dedicated Acres 40	Joint or Infill	Consolidation Code	Order No.
------------------------------	-----------------	--------------------	-----------

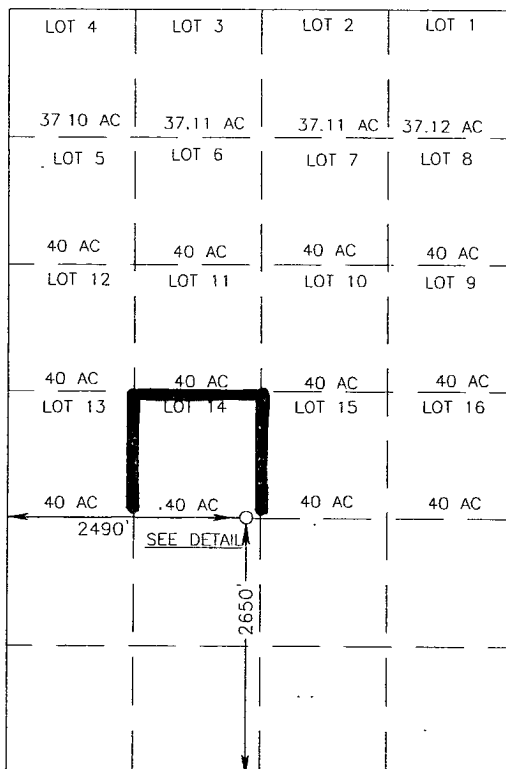
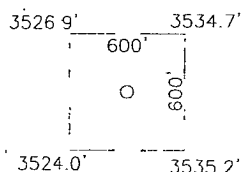
NO ALLOWABLE WILL BE ASSIGNED TO THIS COMPLETION UNTIL ALL INTERESTS HAVE BEEN CONSOLIDATED
OR A NON-STANDARD UNIT HAS BEEN APPROVED BY THE DIVISION

GEODETIC COORDINATES
NAD 27 NME

Y=550630.5 N
X=875070.0 E

LAT.=32.507909° N
LONG.=103.116694° W
LAT. = 32°30'28" N
LONG. = 103°07'00" W

DETAIL



SCALE: 1" = 2000'

OPERATOR CERTIFICATION

I hereby certify that the information herein is true and complete to the best of my knowledge and belief, and that this organization either owns a working interest or unleased mineral interest in the land including the proposed bottom hole location or has a right to drill this well at this location pursuant to a contract with an owner of such mineral or working interest, or to a voluntary pooling agreement or a compulsory pooling order heretofore entered by the division.

Sorina L. Flores 1/21/11
Signature Date
Sorina L. Flores
Printed Name

SURVEYOR CERTIFICATION

I hereby certify that the well location shown on this plat was plotted from field notes of actual surveys made by me or under my supervision, and that the same is true and correct to the best of my belief

AUG 15 2010
Date Surveyed
Signature & Seal of Professional Surveyor
Ronald J. Eidson 9/15/2010
Certificate No. 12641
RONALD J. EIDSON 3239

SEP 08 2011