

DISTRICT I  
1625 N FRENCH DR., HOBBS, NM 88240

DISTRICT II  
1301 W. GRAND AVENUE, ARTESIA, NM 88210

DISTRICT III  
1000 RIO BRAZOS RD., AZTEC, NM 87410

DISTRICT IV  
11885 S. ST. FRANCIS DR., SANTA FE, NM 87505

State of New Mexico  
Energy, Minerals and Natural Resources Department

HOBBS OCD

Form C-102

Revised October 12, 2005

Submit to Appropriate District Office

State Lease - 4 Copies

Fee Lease - 3 Copies

OIL CONSERVATION DIVISION

11885 SOUTH ST. FRANCIS DR.  
Santa Fe, New Mexico 87505

SEP 08 2011

RECEIVED

WELL LOCATION AND ACREAGE DEDICATION PLAT

☐ AMENDED REPORT

API Number <b>30-025-40117</b>	Pool Code <b>6660</b>	Pool Name <b>BLINEBRY OIL + GAS (OIL)</b>
Property Code <b>306607</b>	Property Name <b>MARK OWEN</b>	Well Number <b>29</b>
OGRID No. <b>873</b>	Operator Name <b>APACHE CORPORATION</b>	Elevation <b>3574'</b>

Surface Location

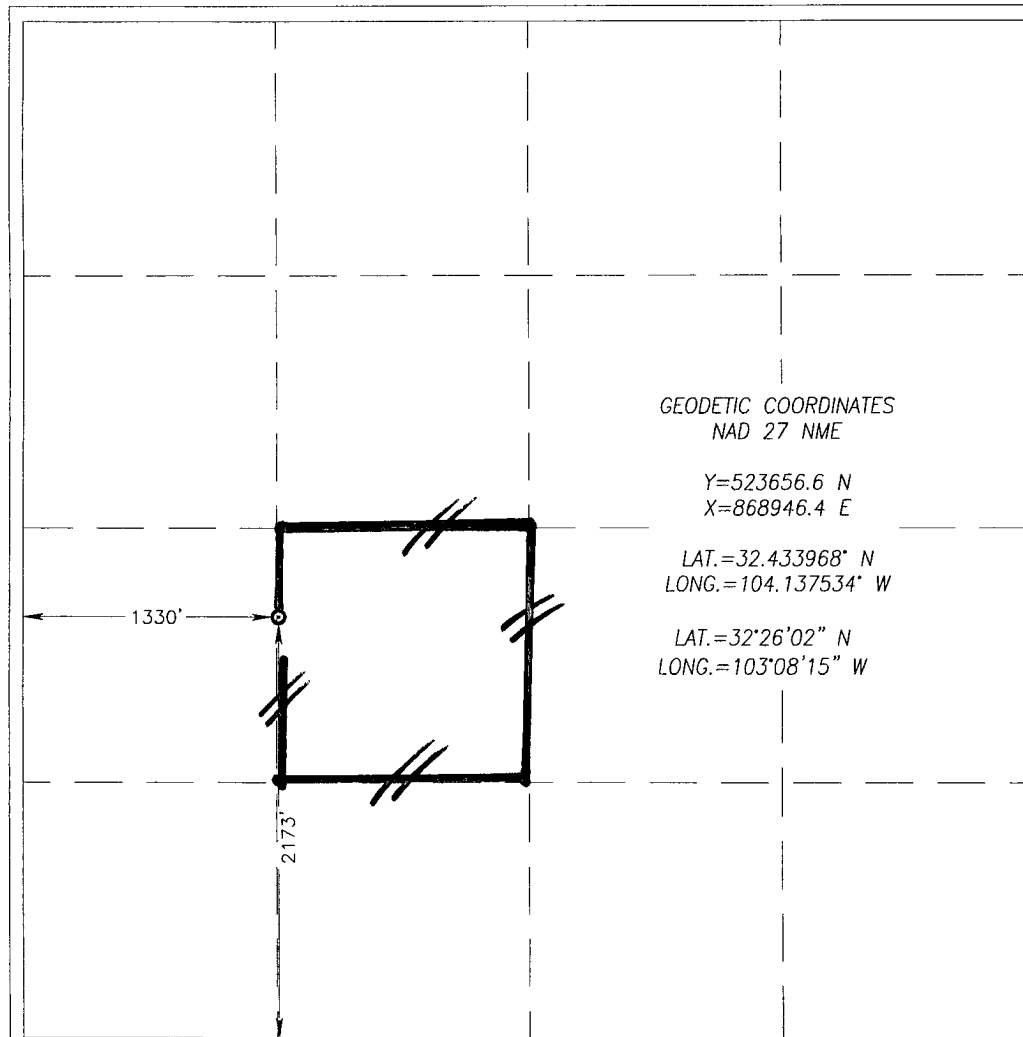
UL or lot No. <b>K</b>	Section <b>35</b>	Township <b>21-S</b>	Range <b>37-E</b>	Lot Idn	Feet from the <b>2173</b>	North/South line <b>SOUTH</b>	Feet from the <b>1330</b>	East/West line <b>WEST</b>	County <b>LEA</b>
---------------------------	----------------------	-------------------------	----------------------	---------	------------------------------	----------------------------------	------------------------------	-------------------------------	----------------------

Bottom Hole Location If Different From Surface

UL or lot No.	Section	Township	Range	Lot Idn	Feet from the	North/South line	Feet from the	East/West line	County
---------------	---------	----------	-------	---------	---------------	------------------	---------------	----------------	--------

Dedicated Acres <b>40</b>	Joint or Infill	Consolidation Code	Order No. <b>NSL-6348-A; USP-1935-B; SD-200409-C; DHC-HOB-481</b>
------------------------------	-----------------	--------------------	--

NO ALLOWABLE WILL BE ASSIGNED TO THIS COMPLETION UNTIL ALL INTERESTS HAVE BEEN CONSOLIDATED  
OR A NON-STANDARD UNIT HAS BEEN APPROVED BY THE DIVISION



OPERATOR CERTIFICATION

I hereby certify that the information herein is true and complete to the best of my knowledge and belief, and that this organization either owns a working interest or unleased mineral interest in the land including the proposed bottom hole location or has a right to drill this well at this location pursuant to a contract with an owner of such mineral or working interest, or to a voluntary pooling agreement or a compulsory pooling order heretofore entered by the division.

**Reesa Holland** 8/23/11  
Signature Date  
**REESA HOLLAND**  
Printed Name

SURVEYOR CERTIFICATION

I hereby certify that the well location shown on this plat was plotted from field notes of actual surveys made by me or under my supervision, and that the same is true and correct to the best of my belief.

DECEMBER 22, 2010

Date Surveyed  
Signature & Seal of Professional Surveyor  
**GARY G. EIDSON**  
Certificate No. **GARY G. EIDSON 12641**  
**RONALD EIDSON 3239**

OCT 13 2011

DISTRICT I  
1625 N FRENCH DR., HOBBS, NM 88240

State of New Mexico  
Energy, Minerals and Natural Resources Department

HOBBS OCD

Form C-102

DISTRICT II  
1301 W. GRAND AVENUE, ARTESIA, NM 88210

OIL CONSERVATION DIVISION SEP 08 2011  
11885 SOUTH ST. FRANCIS DR.  
Santa Fe, New Mexico 87505

Revised October 12, 2005  
Submit to Appropriate District Office  
State Lease - 4 Copies  
Fee Lease - 3 Copies

DISTRICT III  
1000 RIO BRAZOS RD., AZTEC, NM 87410

RECEIVED

DISTRICT IV  
11885 S. ST. FRANCIS DR., SANTA FE, NM 87505

WELL LOCATION AND ACREAGE DEDICATION PLAT

☐ AMENDED REPORT

API Number <b>30-025-40117</b>	Pool Code <b>86440</b>	Pool Name <b>TUBB OIL+ GAS (PRO GAS)</b>
Property Code <b>306607</b>	Property Name <b>MARK OWEN</b>	Well Number <b>29</b>
OGRID No. <b>873</b>	Operator Name <b>APACHE CORPORATION</b>	Elevation <b>3574'</b>

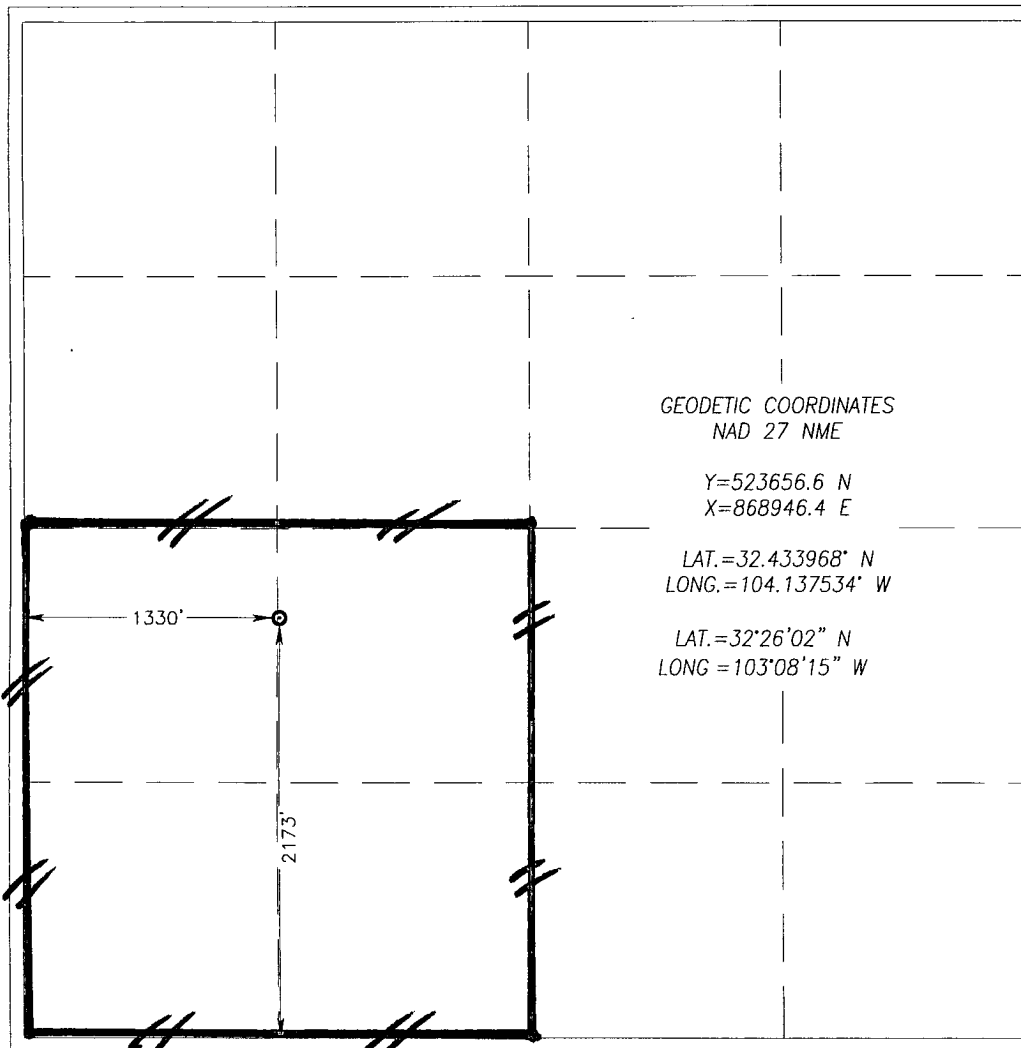
Surface Location

UL or lot No. <b>K</b>	Section <b>35</b>	Township <b>21-S</b>	Range <b>37-E</b>	Lot Idn	Feet from the <b>2173</b>	North/South line <b>SOUTH</b>	Feet from the <b>1330</b>	East/West line <b>WEST</b>	County <b>LEA</b>
---------------------------	----------------------	-------------------------	----------------------	---------	------------------------------	----------------------------------	------------------------------	-------------------------------	----------------------

Bottom Hole Location If Different From Surface

UL or lot No.	Section	Township	Range	Lot Idn	Feet from the	North/South line	Feet from the	East/West line	County
Dedicated Acres <b>160</b>	Joint or Infill	Consolidation Code	Order No. <b>NSL-6348-A; NSP-1935-B; SD-200409-C; DHC-HOB-481</b>						

NO ALLOWABLE WILL BE ASSIGNED TO THIS COMPLETION UNTIL ALL INTERESTS HAVE BEEN CONSOLIDATED  
OR A NON-STANDARD UNIT HAS BEEN APPROVED BY THE DIVISION



OPERATOR CERTIFICATION

I hereby certify that the information herein is true and complete to the best of my knowledge and belief, and that this organization either owns a working interest or unleased mineral interest in the land including the proposed bottom hole location or has a right to drill this well at this location pursuant to a contract with an owner of such mineral or working interest, or to a voluntary pooling agreement or a compulsory pooling order heretofore entered by the division.

**Reesa Holland** 8/23/11  
Signature Date  
**REESEA HOLLAND**  
Printed Name

SURVEYOR CERTIFICATION

I hereby certify that the well location shown on this plat was plotted from field notes of actual surveys made by me or under my supervision, and that the same is true and correct to the best of my belief.

DECEMBER 22, 2010

Date Surveyed  
Signature and Seal of Professional Surveyor  
Professional Surveyor  
NEW MEXICO  
RONALD P. EIDSON  
10.11.1843  
Certificate No. GARY G. EIDSON 12641  
RONALD P. EIDSON 3239

DISTRICT I  
1625 N. FRENCH DR., HOBBS, NM 88240

DISTRICT II  
1301 W. GRAND AVENUE, ARTESIA, NM 88210

DISTRICT III  
1000 RIO BRAZOS RD., AZTEC, NM 87410

DISTRICT IV  
11885 S. ST. FRANCIS DR., SANTA FE, NM 87505

State of New Mexico  
Energy, Minerals and Natural Resources Department

HOBBS OCD

SEP 08 2011

Form C-102  
Revised October 12, 2005  
Submit to Appropriate District Office  
State Lease - 4 Copies  
Fee Lease - 3 Copies

OIL CONSERVATION DIVISION

11885 SOUTH ST. FRANCIS DR.  
Santa Fe, New Mexico 87505

RECEIVED

WELL LOCATION AND ACREAGE DEDICATION PLAT

☐ AMENDED REPORT

API Number <b>30-025-40117</b>	Pool Code <b>19190</b>	Pool Name <b>DRINKARD</b>
Property Code <b>306607</b>	Property Name <b>MARK OWEN</b>	Well Number <b>29</b>
OGRID No. <b>873</b>	Operator Name <b>APACHE CORPORATION</b>	Elevation <b>3574'</b>

Surface Location

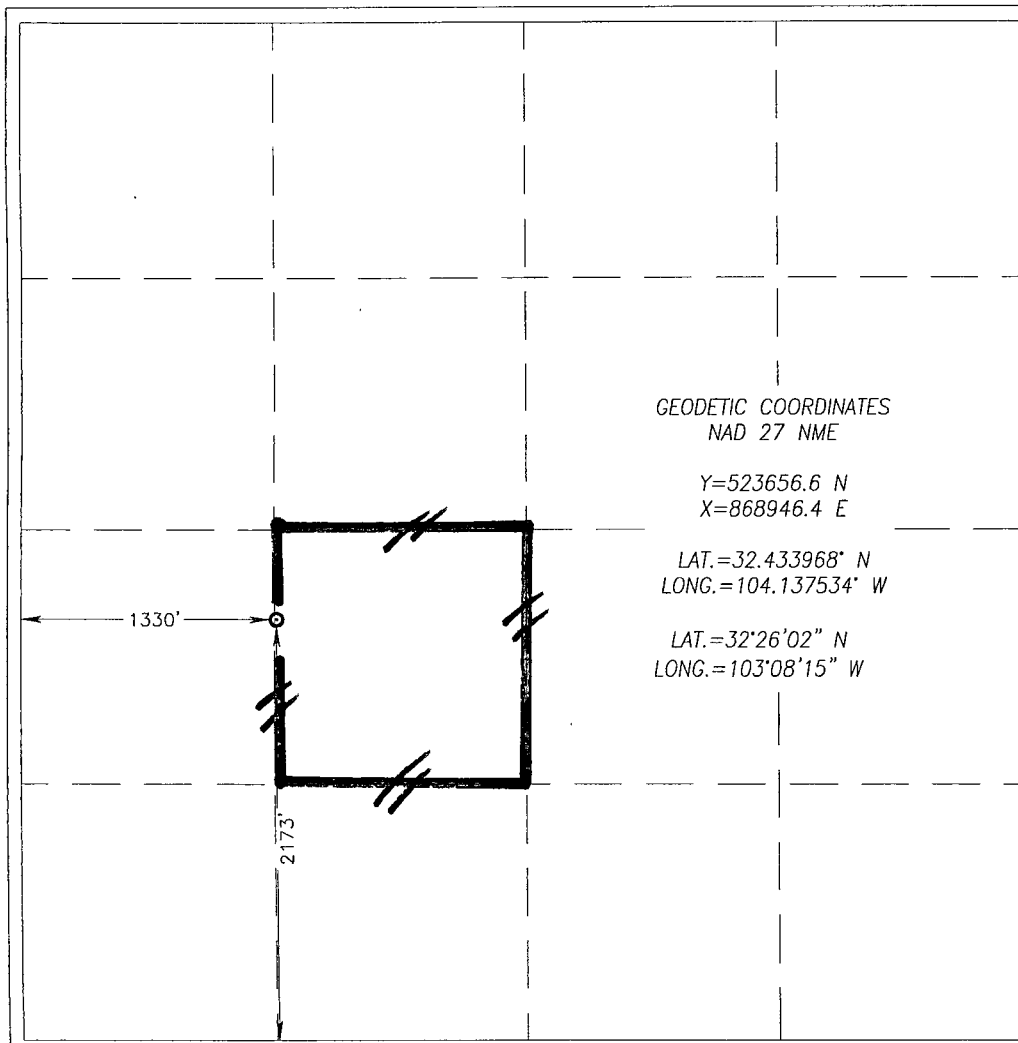
UL or lot No.	Section	Township	Range	Lot Idn	Feet from the	North/South line	Feet from the	East/West line	County
<b>K</b>	<b>35</b>	<b>21-S</b>	<b>37-E</b>		<b>2173</b>	<b>SOUTH</b>	<b>1330</b>	<b>WEST</b>	<b>LEA</b>

Bottom Hole Location If Different From Surface

UL or lot No.	Section	Township	Range	Lot Idn	Feet from the	North/South line	Feet from the	East/West line	County
---------------	---------	----------	-------	---------	---------------	------------------	---------------	----------------	--------

Dedicated Acres <b>40</b>	Joint or Infill	Consolidation Code	Order No. <b>NSL-6348-A; USP-1935-B; SD-200409-C; DHC-HOB-481</b>
------------------------------	-----------------	--------------------	--

NO ALLOWABLE WILL BE ASSIGNED TO THIS COMPLETION UNTIL ALL INTERESTS HAVE BEEN CONSOLIDATED  
OR A NON-STANDARD UNIT HAS BEEN APPROVED BY THE DIVISION



OPERATOR CERTIFICATION

I hereby certify that the information herein is true and complete to the best of my knowledge and belief, and that this organization either owns a working interest or unleased mineral interest in the land including the proposed bottom hole location or has a right to drill this well at this location pursuant to a contract with an owner of such mineral or working interest, or to a voluntary pooling agreement or a compulsory pooling order heretofore entered by the division.

**Reesa Holland** 8/23/11  
Signature Date  
**REESEA HOLLAND**  
Printed Name

SURVEYOR CERTIFICATION

I hereby certify that the well location shown on this plat was plotted from field notes of actual surveys made by me or under my supervision, and that the same is true and correct to the best of my belief.

DECEMBER 22, 2010

Date Surveyed  
Signature of Professional Surveyor  
Professional Surveyor  
Certificate No. GARY G. EIDSON 12641  
RONALD P. EIDSON 3239