

State of New Mexico
Energy, Minerals and Natural Resources

Form C-103

March 4, 2004

HOBBS OCD

OCT 20 2011

RECEIVED

OIL CONSERVATION DIVISION

220 South St. Francis Dr.
Santa Fe, NM 87505

SUNDRY NOTICES AND REPORTS ON WELLS
(DO NOT USE THIS FORM FOR PROPOSALS TO DRILL OR TO DEEPEN OR PLUG BACK TO A DIFFERENT RESERVOIR USE "APPLICATION FOR PERMIT" (FORM C-101) FOR SUCH PROPOSALS)

1. Type of Well:

Oil Well ☒ Gas Well ☐ Other ☐

2. Name of Operator

Chevron USA Inc.

3. Address of Operator

#15 Smith Rd., Midland, TX 79705

4. Well Location

Unit Letter L : 1700 feet from the SOUTH line and 869 feet from the WEST lineSection 23Township 19-S Range 36-E NMPM Lea County

11. Elevation (Show whether DR, RKB, RT, GR, etc.)

Pit or Below-grade Tank Application (For pit or below-grade tank closures, a form C-144 must be attached)

Pit Location: UL L Sect 23 Twp 19-S Rng 36-E Pit type Steel Depth to Groundwater Distance from nearest fresh water well

Distance from nearest surface water Below-grade Tank Location UL Sect Twp Rng ;

1700 feet from the South line and 869 feet from the West line (Steel Tank)

12. Check Appropriate Box to Indicate Nature of Notice, Report or Other Data

NOTICE OF INTENTION TO:

PERFORM REMEDIAL WORK ☐ PLUG AND ABANDON ☒TEMPORARILY ABANDON ☐ CHANGE PLANS ☐PULL OR ALTER CASING ☐ MULTIPLE COMPLETION ☐

OTHER.

SUBSEQUENT REPORT OF:

REMEDIAL WORK ☐ ALTERING CASING ☐COMMENCE DRILLING OPNS ☐ PLUG AND ABANDONMENT ☐TEST AND ☐

The Oil Conservation Division Must be notified 24 hours prior to the beginning of plugging operations.

13. Describe proposed or completed operations. (Clearly state all pertinent details; and of starting any proposed work). SEE RULE 1103. For Multiple Completions: Attach wellbore diagram or recompletion.

1. Notify OCD 24 hrs. prior to MI and RU.

2. RIH, ~~open~~ set CIBP @ 6650' and spot 25sx of class "C" cement plug from 6650'-6450' (perfs) . WOC&TAG.

3. Displace hole w/MLF, 9.5# Brine w/25# gel P/BBL.

4. Spot 25sx class "C" cement plug from 4590'-4390' (S.Andres).

5. Perf and squeeze 95sx class "C" cement plug from 2922'-2570' (Yates/B.Salt). WOC&TAG.

I hereby certify that the information above is true and complete to the best of my knowledge and belief. I further certify that any pit or below-grade tank has been/will be constructed or closed according to NMOCD guidelines ☐, a general permit ☐ or an (attached) alternative OCD-approved plan ☐.

SIGNATURE

TITLE Agent for Chevron USA, Inc.

DATE 10-18-2011

Type or print name

M. Lee Roark

E-mail address:

Telephone No. 432-561-8600

(This space for State use)

APPROVED BY

TITLE

STAFF MEMBER

DATE

10-10-2011

Conditions of approval, if any:

OCT 8 0 2011

Submit 3 Copies To Appropriate District

Office

District I

1625 N French Dr, Hobbs, NM 88240

District II

1301 W Grand Ave, Artesia, NM 88210

District III

1000 Rio Brazos Rd, Aztec, NM 87410

District IV

1220 S St Francis Dr., Santa Fe, NM

87505

State of New Mexico
Energy, Minerals and Natural Resources

Form C-103

March 4, 2004

HOBBS OCD

OIL CONSERVATION DIVISION

1220 South St. Francis Dr.

Santa Fe, NM 87505

OCT 20 2011

WELL API NO.
30-025-34407

5. Indicate Type of Lease
STATE ☒ FEE ☐

6. State Oil & Gas Lease No.

7. Lease Name or Unit Agreement Name
MONUMENT 23 STATE

8. Well Number
23

9. OGRID Number
4323

10. Pool name or Wildcat
MONUMENT; YESO, NW

SUNDRY NOTICES AND REPORTS ON WELLS
(DO NOT USE THIS FORM FOR PROPOSALS TO DRILL OR TO DEEPEN OR PLUG BACK TO A
DIFFERENT RESERVOIR USE "APPLICATION FOR PERMIT" (FORM C-101) FOR SUCH
PROPOSALS)

1. Type of Well:
Oil Well ☒ Gas Well ☐ Other

2. Name of Operator
Chevron USA Inc.

3. Address of Operator
#15 Smith Rd., Midland, TX 79705

4. Well Location
Unit Letter L : 1700 feet from the SOUTH line and 869 feet from the WEST line
Section 23 Township 19-S Range 36-E NMPM Lea County

11. Elevation (Show whether DR, RKB, RT, GR, etc.)

Pit or Below-grade Tank Application (For pit or below-grade tank closures, a form C-144 must be attached)

Pit Location: UL L Sect 23 Twp 19-S Rng 36-E Pit type Steel Depth to Groundwater Distance from nearest fresh water well
Distance from nearest surface water Below-grade Tank Location UL Sect Twp Rng ;
1700 feet from the South line and 869 feet from the West line (Steel Tank)

12. Check Appropriate Box to Indicate Nature of Notice, Report or Other Data

NOTICE OF INTENTION TO:

PERFORM REMEDIAL WORK ☐ PLUG AND ABANDON ☒

TEMPORARILY ABANDON ☐ CHANGE PLANS ☐

PULL OR ALTER CASING ☐ MULTIPLE COMPLETION ☐

OTHER: ☐

SUBSEQUENT REPORT OF:

REMEDIAL WORK ☐ ALTERING CASING ☐

COMMENCE DRILLING OPNS. ☐ PLUG AND ABANDONMENT ☐

CASING TEST AND CEMENT JOB ☐

OTHER. ☐

13. Describe proposed or completed operations. (Clearly state all pertinent details, and give pertinent dates, including estimated date of starting any proposed work). SEE RULE 1103. For Multiple Completions: Attach wellbore diagram of proposed completion or recompletion.

6. Perf and squeeze 60sx cement plug from 1562'-1338' (T.Salt/shoe). WOC&TAG.

7. Perf and squeeze 105sx cement plug from 400'-surface' (Fr.Wtr./surface). Verify TOC.

8. Install dryhole marker and clean location.

I hereby certify that the information above is true and complete to the best of my knowledge and belief. I further certify that any pit or below-grade tank has been/will be constructed or closed according to NMOC guidelines ☐, a general permit ☐ or an (attached) alternative OCD-approved plan ☐.

SIGNATURE M. Lee Roark TITLE Agent for Chevron USA, Inc. DATE 10-18-2011

Type or print name M. Lee Roark E-mail address: Telephone No. 432-561-8600

(This space for State use)

APPROVED BY TITLE DATE

Conditions of approval, if any:

OCT 20 2011

Well **Monument 23 State #23**

Field **Monument NW**

Reservoir: **Yeso**

Location:

1700' FSL & 869' FWL
Section. 23
Township 19-S
Range. 36-E
County: Lea State. NM

Elevations:

GL: 3730'
KB: 3741'
DF

**Proposed
Wellbore Diagram**

Well ID Info:

Chevno BR8347
API No: 30-025-34407
L5/L6. UCU936000
Spud Date: 07/16/1998
Compl Date

Rod Detail

To be determined by ALCR

Tubing Detail

To be determined by ALCR

Surf. Csg: 8 5/8", 23#, WC-50
Set: @ 1438' w/ 450 sks
Hole Size: 11"
Circ: Yes **TOC:** Surface
TOC By: Circulated

<u>Perforation</u>	<u>Status</u>
6708'-6712'	Open - Yeso
6759'-6766'	Open - Yeso
6777'-6780'	Open - Yeso
6832'-6836'	Open - Yeso
6842'-6847'	Open - Yeso
6905'-6908'	Open - Yeso

CIBP @ 7125' with 35' cmt on top

Prod. Csg: 5 1/2", 15.5#, K-55
Set: @ 7150' w/ 850 sks
Hole Size: 7 7/8"
Circ: No **TOC:** 1200' ✓
TOC By: Cmt Bond Log

7 7/8" Open Hole: 7150'-7502'

COTD:
PBTD:
TD: 7502'

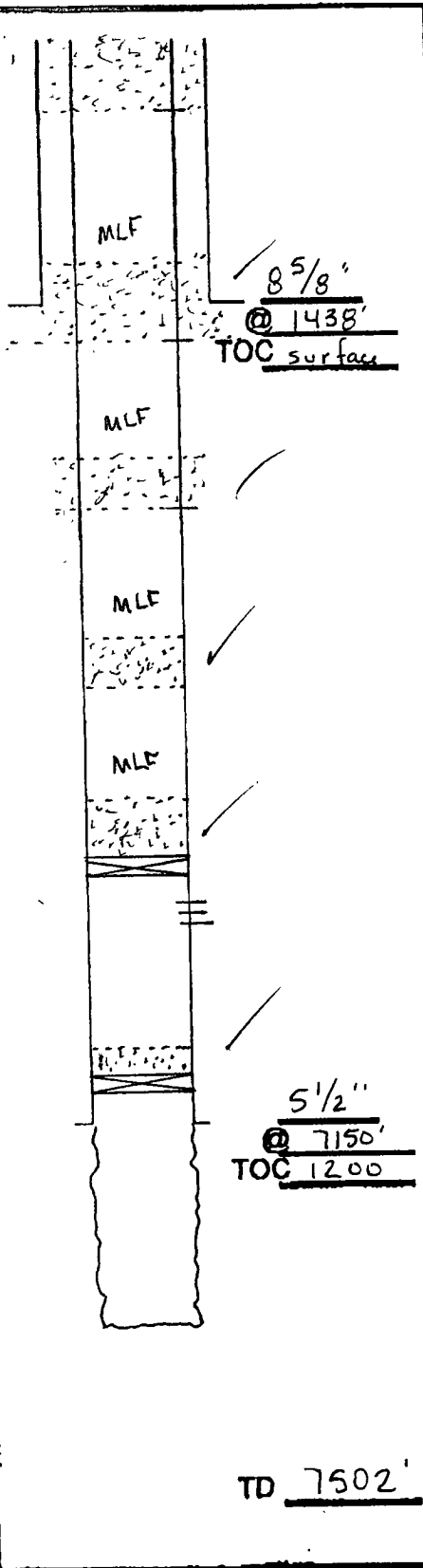
Updated: 04/05/2011

By: A. Moore

PLUGGING & ABANDONMENT WORKSHEET (3 STRING CSNG)

OPERATOR CHEVRON U.S.A. Inc.
LEASENAME Monument 23 State

WELL # 23
SECT 23 TWN 19S RNG 36E
FROM 1700 NSL 869 EWL
TD: 7502 FORMATION @ TD
PBTD: FORMATION @ PBTD



	SIZE	SET @	TOC	TOC DETERMINED BY
SURFACE	8 5/8"	1438'	surface	circulated
INTMED 1				
INTMED 2				
PROD	5 1/2"	7150'	1200	CBL
	SIZE	TOP	BOT	TOC DETERMINED BY
LINER 1				
LINER 2				
	CUT & PULL @		TOP - BOTTOM	
INTMED 1		PERF	6708 - 6908	
INTMED 2		OPENHOLE	7150' - 7502'	
PROD				

* REQUIRED PLUGS DISTRICT *

RUNTLEX (WFTYD)	
YATES	2822'
QUEEN	3649'
GRAYBURD	4041'
SAN ANTONIO	4490'
T. Salt	1462'
CAPTAN LEE	
B. Salt	2670'
DELAWARE sand	4790
BELL CANYON	
CHERRY CANYON	
BRUSHY CANYON	
BONE SPRING	4322'
FLORIDA	
OLNEY	
TURB	
ORDEKARD	
ABO	7139'
WC	
PERN	
STRAWN	
ATOKA	
MOORE	
SON	
DEVONIAN	

PLUG	TYPE	BACKS	DEPTH
PLUG	PLUG	CMNT	
EXAMPLES			
PLUG #1	OH	25 SXS	9850'
PLUG #2	SHOE	50 SXS	8700'-8800'
PLUG #3	CIBP/35'		5300'
PLUG #4	CIBP	25 SXS	5300'
PLUG #5	STUB	50 SXS	4600'-4700'
PLUG #6	RETNR SQZ	200 SXS	400
PLUG #7	SURF	10 SXS	0-10'
PLUG #8	CIBP	25sx	6650'-6450'
PLUG #9	S. Andres	25sx	4540'-4390'
PLUG #10	Yates	95sx	2922'-2570'
PLUG #11	B. Salt		
PLUG #12	T. Salt	60sx	1562'-1338'
PLUG #13	Shoe		
PLUG #14	Fr. Wtr.	105sx	400'-surface
PLUG #15	Surface		
PLUG #16			
PLUG #17			
PLUG #18			
PLUG #19			
PLUG #20			
PLUG #21			
PLUG #22			
PLUG #23			
PLUG #24			
PLUG #25			
PLUG #26			
PLUG #27			
PLUG #28			
PLUG #29			
PLUG #30			