

**DISTRICT II**  
1901 W. Grand Avenue, Artesia, NM 88210

**OIL CONSERVATION DIVISION**  
1220 South St. Frances Dr.  
Santa Fe, NM 87505

**DISTRICT III**  
**1000 Rio Brazos Rd., Artec, NM 87410**

**DISTRICT IV**  
1220 S. St. Francis Dr., Santa Fe, NM 87505

☐ **AMENDED REPORT**

# WELL LOCATION AND ACREAGE DEDICATION PLAT

API Number 30-025-40138		Pool Code 44500	Pool Name Maljamar; Yeso West
Property Code 38238	Property Name AQUAMARINE STATE		Well Number 4
OGRID No. 217817	Operator Name CONOCOPHILLIPS		Elevation 4025'

### Surface Location

UL or lot No.	Section	Township	Range	Lot Idn	Feet from the	North/South line	Feet from the	East/West line	County
P	16	17 S	32 E		990	SOUTH	330	EAST	LEA

## Bottom Hole Location If Different From Surface

UL or lot No.	Section	Township	Range	Lot Idn	Feet from the	North/South line	Feet from the	East/West line	County
Dedicated Acres 40	Joint or Infill	Consolidation Code	Order No.						

NO ALLOWABLE WILL BE ASSIGNED TO THIS COMPLETION UNTIL ALL INTERESTS HAVE BEEN CONSOLIDATED OR A NON-STANDARD UNIT HAS BEEN APPROVED BY THE DIVISION


**NOTE:**

1) Plane Coordinates shown hereon are Transverse Mercator Grid and Conform to the "New Mexico Coordinate System", New Mexico East Zone, North American Datum of 1927. Distances shown hereon are mean horizontal surface values.

**Plane Coordinate**  
X = 675,059.0  
Y = 666,126.8

**OPERATOR CERTIFICATION**

I hereby certify the information contained herein is true and complete to the best of my knowledge and belief, and that this organization either owns a working interest or unleased mineral interest in the land including the proposed bottom hole location or has a right to drill this well at this location pursuant to a contract with an owner of such a mineral or working interest, or to a voluntary pooling agreement or a compulsory pooling order heretofore entered by the division.

Signature Date 10/13/11  
Shonda Rogers  
Printed Name

**SURVEYOR CERTIFICATION**

I hereby certify that the well location shown on this plat was plotted from field notes of actual surveys made by me or under my supervision and that the same is true and correct to the best of my belief.

March 21, 2011

Date of Survey

Signature & Seal of Professional Surveyor

W.O. Num. 2011-0528

Certificate No. MACON McDONALD 12185

OCT 24 2011.

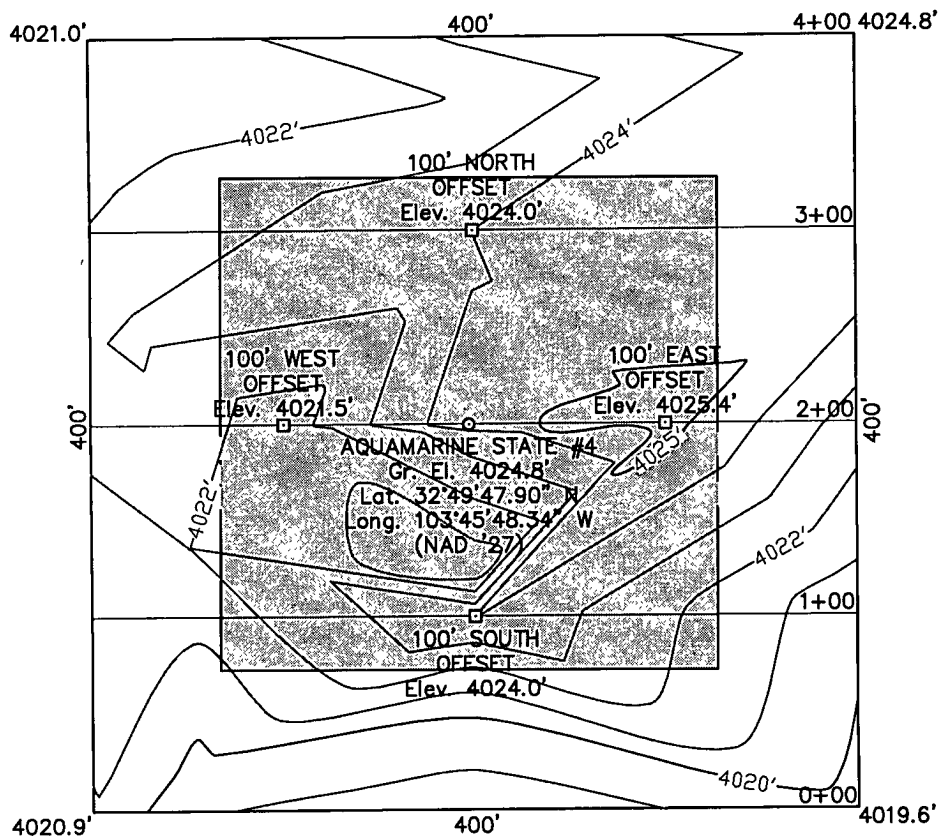
# SECTION 16, TOWNSHIP 17 SOUTH, RANGE 32 EAST, N.M.P.M.

LEA COUNTY

NEW MEXICO

THIS IS NOT A BOUNDARY SURVEY  
Apparent property corners and property lines, if shown,  
are for information only.

L-2011-0528-A



## DRIVING DIRECTIONS

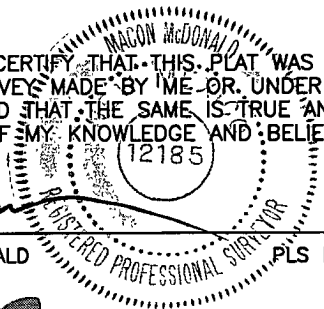
FROM THE INTERSECTION OF HIGHWAY 82 AND MALJAMAR ROAD. GO SOUTH ON SAID MALJAMAR ROAD FOR 1.7 MILES. LOCATION IS APPROXIMATELY 300 FEET TO THE WEST.



I HEREBY CERTIFY THAT THIS PLAT WAS MADE FROM AN ACTUAL SURVEY MADE BY ME OR UNDER MY DIRECT SUPERVISION AND THAT THE SAME IS TRUE AND CORRECT TO THE BEST OF MY KNOWLEDGE AND BELIEF.

*[Signature]*

MACON McDONALD



PLS NO. 12185

**ConocoPhillips**

Topographic Map

**AQUAMARINE STATE #4**

Located 990' FSL & 330' FEL, Section 16  
Township 17 South, Range 32 East, N.M.P.M.  
Lea County, New Mexico

Drawn By: KHY	Date: April 28, 2011
Scale: 1" = 100'	Field Book: 508 / 33-34
Sheet 1 of 3	Quadrangle: Maljamar
W.O. No: 2011-0528	Dwg. No.: L-2011-0528-A

**WEST**  
**COMPANY**  
of Midland, Inc.

110 W. LOUISIANA, STE. 110  
MIDLAND TEXAS, 79701  
(432) 687-0865 - (432) 687-0868 FAX

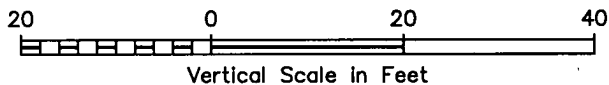
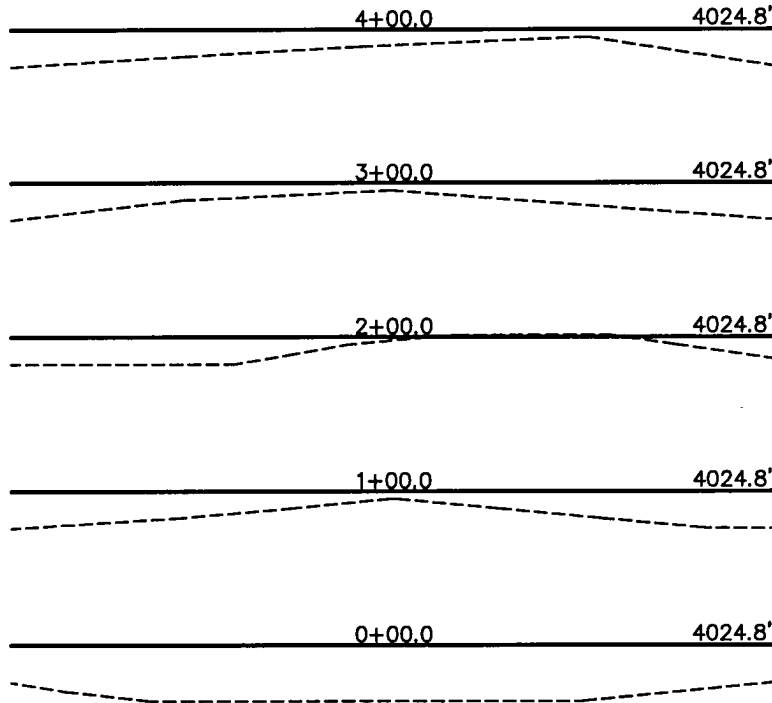
# SECTION 16, TOWNSHIP 17 SOUTH, RANGE 32 EAST, N.M.P.M.

LEA COUNTY

NEW MEXICO

THIS IS NOT A BOUNDARY SURVEY  
Apparent property corners and property lines, if shown,  
are for information only.

L-2011-0528-B

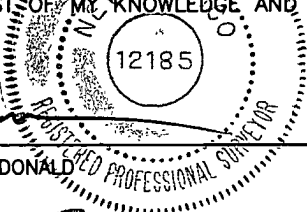


I HEREBY CERTIFY THAT THIS PLAT WAS MADE FROM AN ACTUAL SURVEY MADE BY ME OR UNDER MY DIRECT SUPERVISION AND THAT THE SAME IS TRUE AND CORRECT TO THE BEST OF MY KNOWLEDGE AND BELIEF.

*[Signature]*

MACON McDONALD

PLS NO. 12185



**ConocoPhillips**

**Topographic Map**

**AQUAMARINE STATE #4**

Located 990' FSL & 330' FEL, Section 16  
Township 17 South, Range 32 East, N.M.P.M.  
Lea County, New Mexico

Drawn By: KHY	Date: April 28, 2011
Scale: 1" = 100'	Field Book: 508 / 33-34
Sheet 2 of 3	Quadrangle: Maljamar
W.O. No: 2011-0528	Dwg. No.: L-2011-0528-B



110 W. LOUISIANA, STE. 110  
MIDLAND TEXAS, 79701  
(432) 687-0865 - (432) 687-0868 FAX

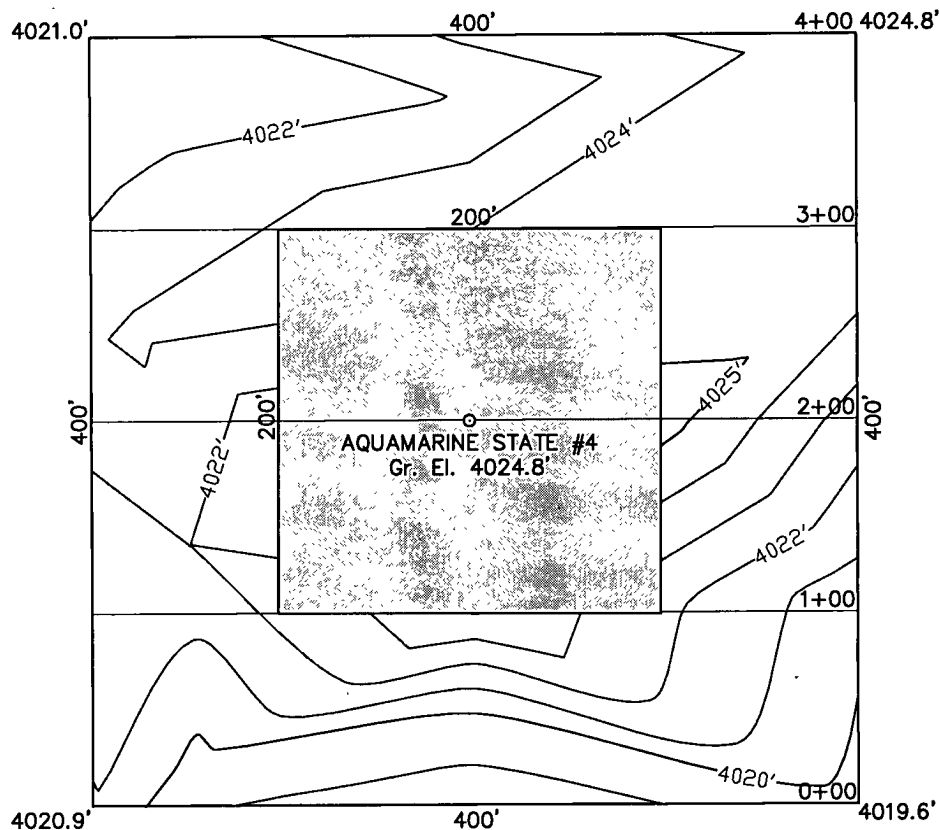
# SECTION 16, TOWNSHIP 17 SOUTH, RANGE 32 EAST, N.M.P.M.

LEA COUNTY

THIS IS NOT A BOUNDARY SURVEY  
Apparent property corners and property lines, if shown,  
are for information only.

NEW MEXICO

L-2011-0536-C

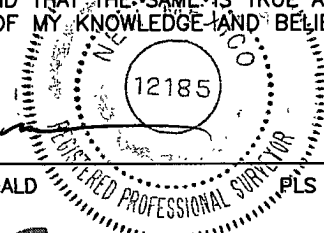


## INTERIM RECLAMATION



I HEREBY CERTIFY THAT THIS PLAT WAS MADE FROM  
AN ACTUAL SURVEY MADE BY ME OR UNDER MY DIRECT  
SUPERVISION AND THAT THE SAME IS TRUE AND CORRECT  
TO THE BEST OF MY KNOWLEDGE AND BELIEF.

*Macon McDonald*



MACON McDONALD

PLS NO. 12185

**WEST**  
**COMPANY**  
of Midland, Inc.

110 W. LOUISIANA, STE. 110  
MIDLAND TEXAS, 79701  
(432) 687-0865 - (432) 687-0868 FAX

**ConocoPhillips**

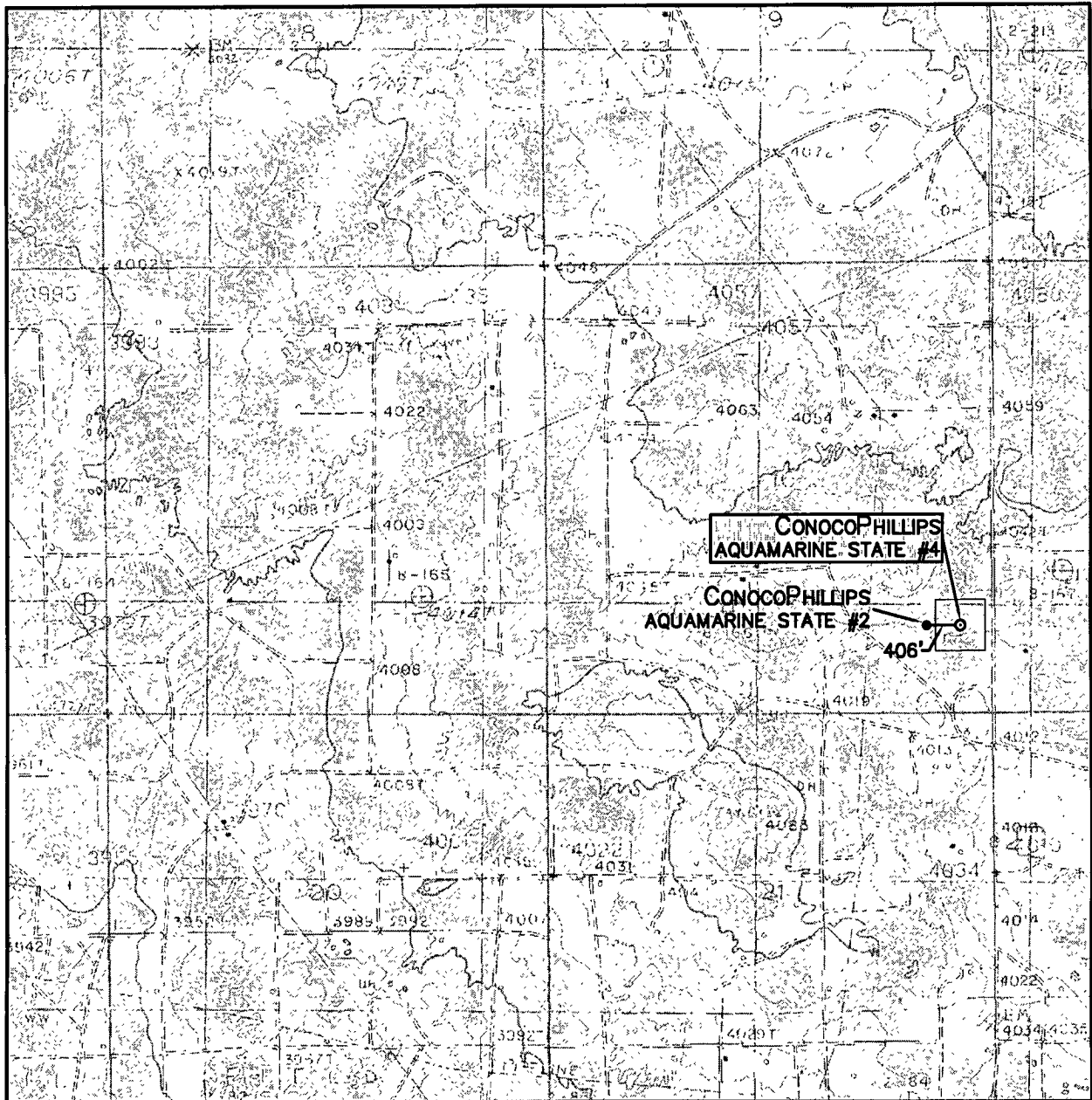
**Topographic Map**

**AQUAMARINE STATE #4**

Located 990' FSL & 330' FEL, Section 16  
Township 17 South, Range 32 East, N.M.P.M.  
Lea County, New Mexico

Drawn By: KHY	Date: April 28, 2011
Scale: 1" = 100'	Field Book: 508 / 33-34
Sheet 3 of 3	Quadrangle: Maljamar
W.O. No: 2011-0528	Dwg. No.: L-2011-0528-C

# LOCATION VERIFICATION MAP



SCALE: 1" = 2000'

CONTOUR INTERVAL:  
MALJAMAR - 10'

SEC. 16 TWP. 17-S RGE. 32-E

SURVEY N.M.P.M.

COUNTY LEA

DESCRIPTION 990' FSL & 330' FEL

ELEVATION 4025'

OPERATOR CONOCOPHILLIPS

LEASE AQUAMARINE STATE

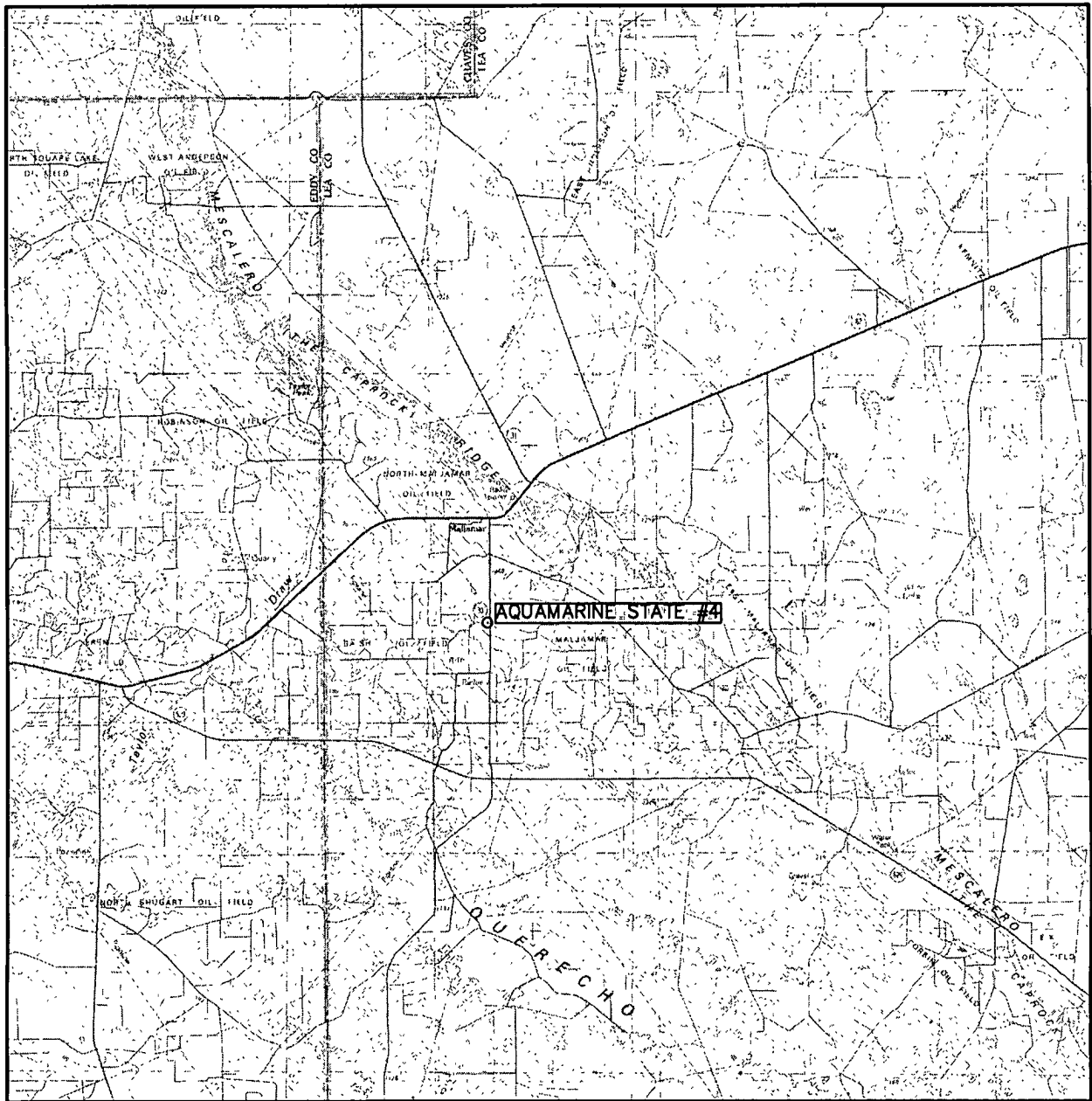
U.S.G.S. TOPOGRAPHIC MAP  
MALJAMAR



**WEST  
COMPANY**  
of Midland, Inc.

110 W. LOUISIANA, STE. 110  
MIDLAND TEXAS, 79701  
(432) 687-0865 - (432) 687-0868 FAX

# VICINITY MAP



SCALE: 1" = 3 MILES

SEC. 16 TWP. 17-S RGE. 32-E

SURVEY N.M.P.M.

COUNTY LEA

DESCRIPTION 990' FSL & 330' FEL

ELEVATION 4025'

OPERATOR CONOCOPHILLIPS

LEASE AQUAMARINE STATE



110 W. LOUISIANA, STE. 110  
MIDLAND TEXAS, 79701  
(432) 687-0865 - (432) 687-0868 FAX