

District I  
1625 N. French Dr., Hobbs, NM 88240  
District II  
811 S. 1st Street, Artesia, NM 88210  
District III  
1000 Rio Brazos Rd., Aztec, NM 87410  
District IV  
2040 South Pacheco, Santa Fe, NM 87505

Energy, Minerals &amp; Natural Resources

Oil Conservation Division  
2040 South Pacheco  
Santa Fe, NM 87505

Submit to appropriate District Office  
State Lease - 6 Copies  
Fee Lease - 5 Copies

☐ AMENDED REPORT

## APPLICATION FOR PERMIT TO DRILL, RE-ENTER, DEEPEN, PLUGBACK, OR ADD A ZONE

<sup>1</sup> Operator Name and Address <b>BP AMERICA PRODUCTION COMPANY</b> <b>501 WESTLAKE PARK BLVD, RM 5.172 HOUSTON, TX 77079</b>		<sup>2</sup> OGRID Number <b>000778</b>
<sup>4</sup> Property Code <b>30597</b>	<sup>5</sup> Property Name <b>CORBIN STATE 24 GAS COM FEDERAL</b>	<sup>3</sup> APL Number <b>30-025-36019</b>
		<sup>6</sup> Well No. <b>1</b>

<sup>7</sup> Surface Location

UL or lot no.	Section	Township	Range	Lot. Idn	Feet from the	North/South Line	Feet from the	East/West line	County
<b>E</b>	<b>24</b>	<b>18S</b>	<b>33E</b>		<b>1980'</b>	<b>NORTH</b>	<b>660'</b>	<b>WEST</b>	<b>LEA</b>

<sup>8</sup> Proposed Bottom Hole Location If Different From Surface

UL or lot no.	Section	Township	Range	Lot. Idn	Feet from the	North/South Line	Feet from the	East/West line	County

<sup>9</sup> Proposed Pool 1**CORBIN, MORROW, SOUTH (GAS)**<sup>10</sup> Proposed Pool 2

<sup>11</sup> Work Type Code <b>N</b>	<sup>12</sup> Well Type Code <b>G</b>	<sup>13</sup> Cable/Rotary <b>R</b>	<sup>14</sup> Lease Type Code <b>S</b>	<sup>15</sup> Ground Level Elevation <b>3892'</b>
<sup>16</sup> Multiple <b>NO</b>	<sup>17</sup> Proposed Depth <b>13700</b>	<sup>18</sup> Formation <b>CORBIN</b>	<sup>19</sup> Contractor <b>KEY ENERGY</b>	<sup>20</sup> Spud Date <b>10/15/02</b>

<sup>21</sup> Proposed Casing and Cement Program

Hole Size	Casing Size	Casing weight/foot	Setting Depth	Sacks of Cement	Estimated TOC
<b>17 1/2"</b>	<b>13 3/8"</b>	<b>48#</b>	<b>450'</b>	<b>410</b>	<b>SURF</b>
<b>12 1/4"</b>	<b>8 5/8"</b>	<b>32#</b>	<b>5300'</b>	<b>1200</b>	<b>SURF</b>
<b>7 7/8"</b>	<b>5 1/2"</b>	<b>17# &amp; 20#</b>	<b>3700'</b>	<b>2000</b>	<b>5000' ABOVE</b>

<sup>22</sup> Describe the proposed program. If this application is to DEEPEN or PLUG BACK, give the data on the present productive zone and proposed new productive zone. Describe the blowout prevention program, if any. Use additional sheets if necessary.

**SUBJECT WELL IS PLANNED AS A 13700' STRAIGHT HOLE. PROPOSED BOP SCHEMATIC ATTACHED.**

Permit Expires 1 Year From Approval  
Date Unless Drilling Underway

<sup>23</sup> I hereby certify that the information given above is true and complete to the best of my knowledge and belief.

Signature: *Sandra J. Moore*

Printed name: **SANDRA J. MOORE**

Title: **REGULATORY COMPLIANCE ASSISTANT**

Date: **10/02/02**

Phone: **281-366-7183**

**OIL CONSERVATION DIVISION**

**ORIGINAL SIGNED BY**

Approved by: **PAUL F. KAUTZ**

Title: **PETROLEUM ENGINEER**

Approval Date: **OCT 14 2002** Expiration Date:

Conditions of Approval:

Attached ☐

*g mp*

## DISTRICT I

P.O. Box 1980, Hobbs, NM 88241-1980

## DISTRICT II

P.O. Drawer DD, Artesia, NM 88211-0719

## DISTRICT III

1000 Rio Brazos Rd., Artec, NM 87410

## DISTRICT IV

P.O. BOX 2088, SANTA FE, N.M. 87504-2088

## OIL CONSERVATION DIVISION

P.O. Box 2088

Santa Fe, New Mexico 87504-2088

Form C-102

Revised February 10, 1994

Submit to Appropriate District Office

State Lease - 4 Copies

Fee Lease - 3 Copies

## WELL LOCATION AND ACREAGE DEDICATION PLAT

☐ AMENDED REPORT

API Number 30-025-36019	Pool Code 75080	Pool Name Corbin, Morrow, South (Gas)
Property Code 30597	Property Name CORBIN STATE 24 GAS COM Federal	Well Number 1
OGRID No. 000778	Operator Name BP America Production Company	Elevation 3892'

## Surface Location

UL or lot No.	Section	Township	Range	Lot Idn	Feet from the	North/South line	Feet from the	East/West line	County
E	24	18-S	33-E		1980	NORTH	660	WEST	LEA

## Bottom Hole Location If Different From Surface

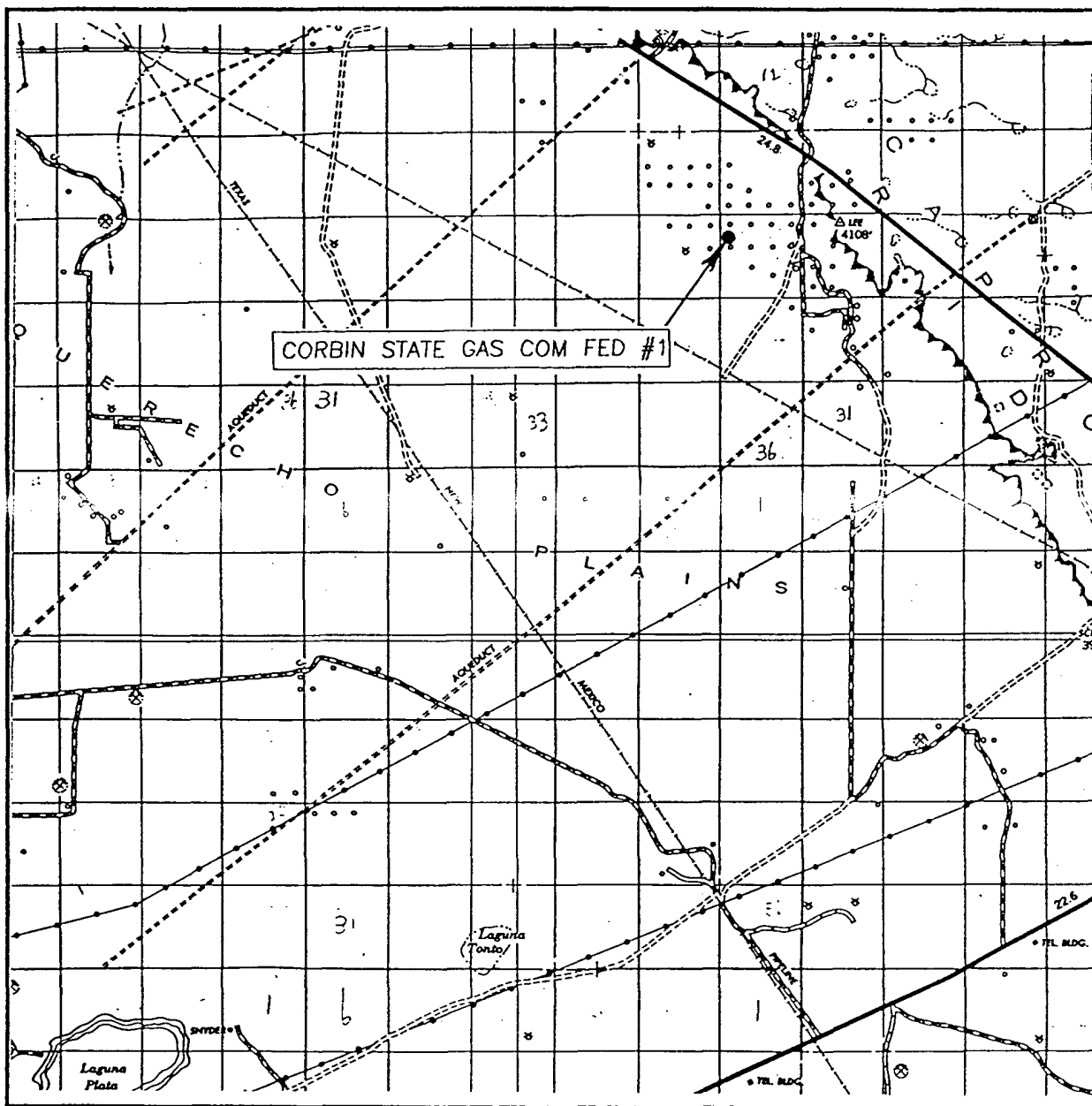
UL or lot No.	Section	Township	Range	Lot Idn	Feet from the	North/South line	Feet from the	East/West line	County

Dedicated Acres	Joint or Infill	Consolidation Code	Order No.
320			

NO ALLOWABLE WILL BE ASSIGNED TO THIS COMPLETION UNTIL ALL INTERESTS HAVE BEEN CONSOLIDATED  
OR A NON-STANDARD UNIT HAS BEEN APPROVED BY THE DIVISION

	<p>GEOGRAPHIC LOCATION NAD 27 Y= 631788.8' X= 718585.9' LAT. 32°44'05.52"N LONG 103°37'20.95"W</p>	<p><b>OPERATOR CERTIFICATION</b></p> <p>I hereby certify the the information contained herein is true and complete to the best of my knowledge and belief.</p> <p><i>Sandra J. Moore</i> Signature SANDRA J. Moore Printed Name Reg. Compliance Asst Title 10-2-02 Date</p>
		<p><b>SURVEYOR CERTIFICATION</b></p> <p>I hereby certify that the well location shown on this plat was plotted from field notes of actual surveys made by me or under my supervision, and that the same is true and correct to the best of my belief.</p> <p>FEBRUARY 28, 2002</p> <p>Date Surveyed Signature &amp; Seal of Professional Surveyor <i>Gary E. Eidson</i> 3/6/02 02-11-0144 Certificate No. RONALD E. EIDSON 3239 GARY EIDSON 12641</p>

# VICINITY MAP

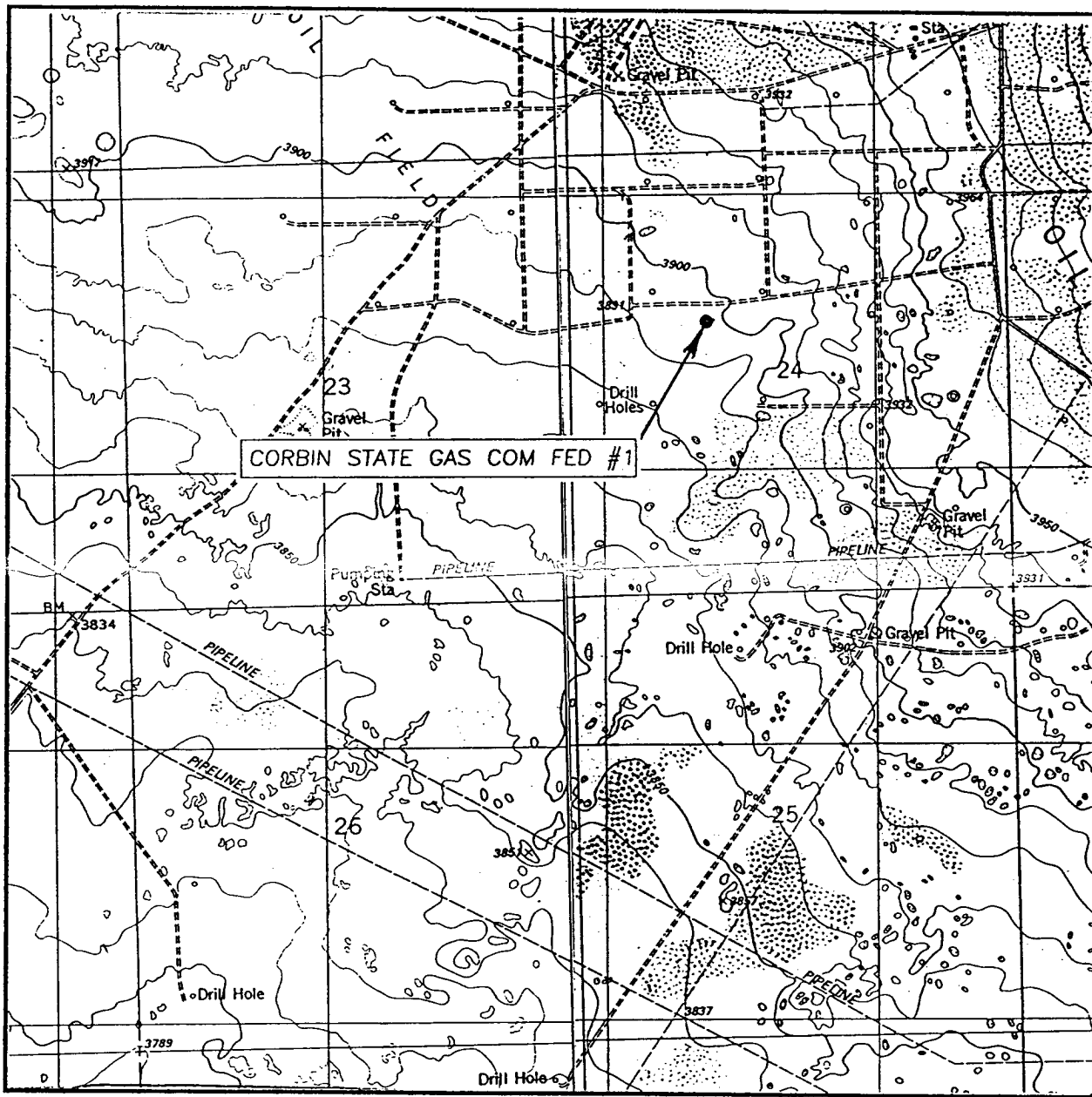


SCALE: 1" = 2 MILES

SEC. 24 TWP. 18-S RGE. 33-E  
SURVEY N.M.P.M.  
COUNTY LEA  
DESCRIPTION 1980' FNL & 660' FWL  
ELEVATION 3892'  
OPERATOR BP dba ARCO PERMIAN  
LEASE CORBIN SATAE GAS COM FED

JOHN WEST SURVEYING  
HOBBS, NEW MEXICO  
(505) 393-3117

# LOCATION VERIFICATION MAP



SCALE: 1" = 2000'

CONTOUR INTERVAL: 10'

SEC. 24 TWP. 18-S RGE. 33-E

LAGUNA GATUNA NW, N.M.

SURVEY N.M.P.M.

COUNTY LEA

DESCRIPTION 1980' FNL & 660' FWL

ELEVATION 3892'

OPERATOR BP dba ARCO PERMIAN

LEASE CORBIN SATAE GAS COM FED

U.S.G.S. TOPOGRAPHIC MAP

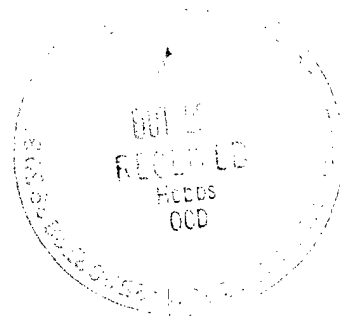
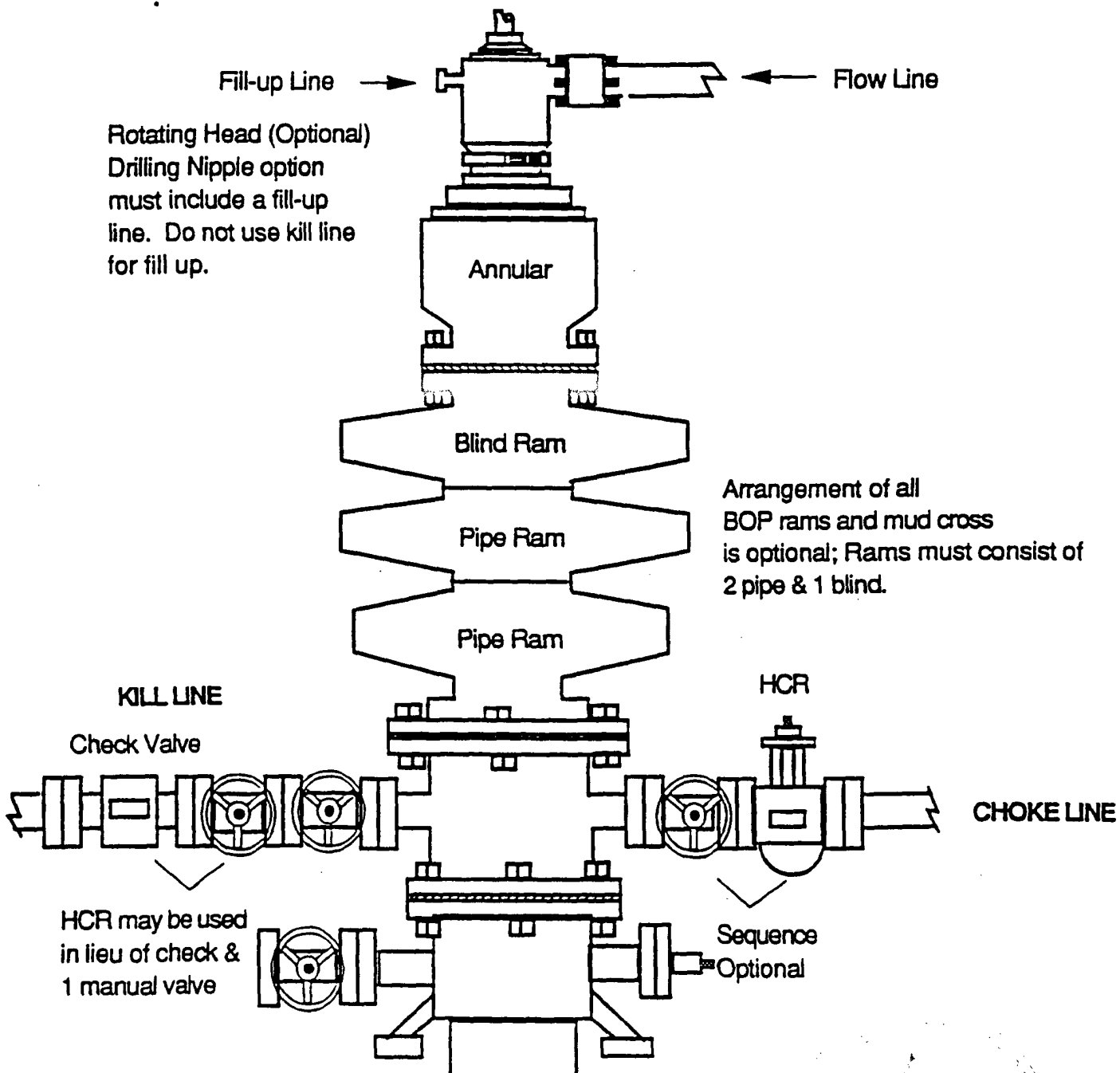
LAGUNA GATUNA NW, N.M.

JOHN WEST SURVEYING  
HOBBS, NEW MEXICO  
(505) 393-3117

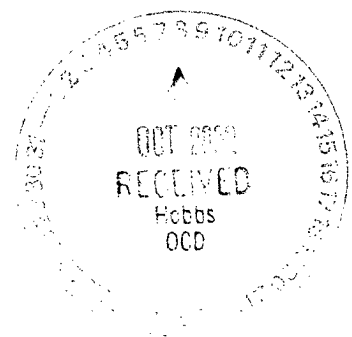
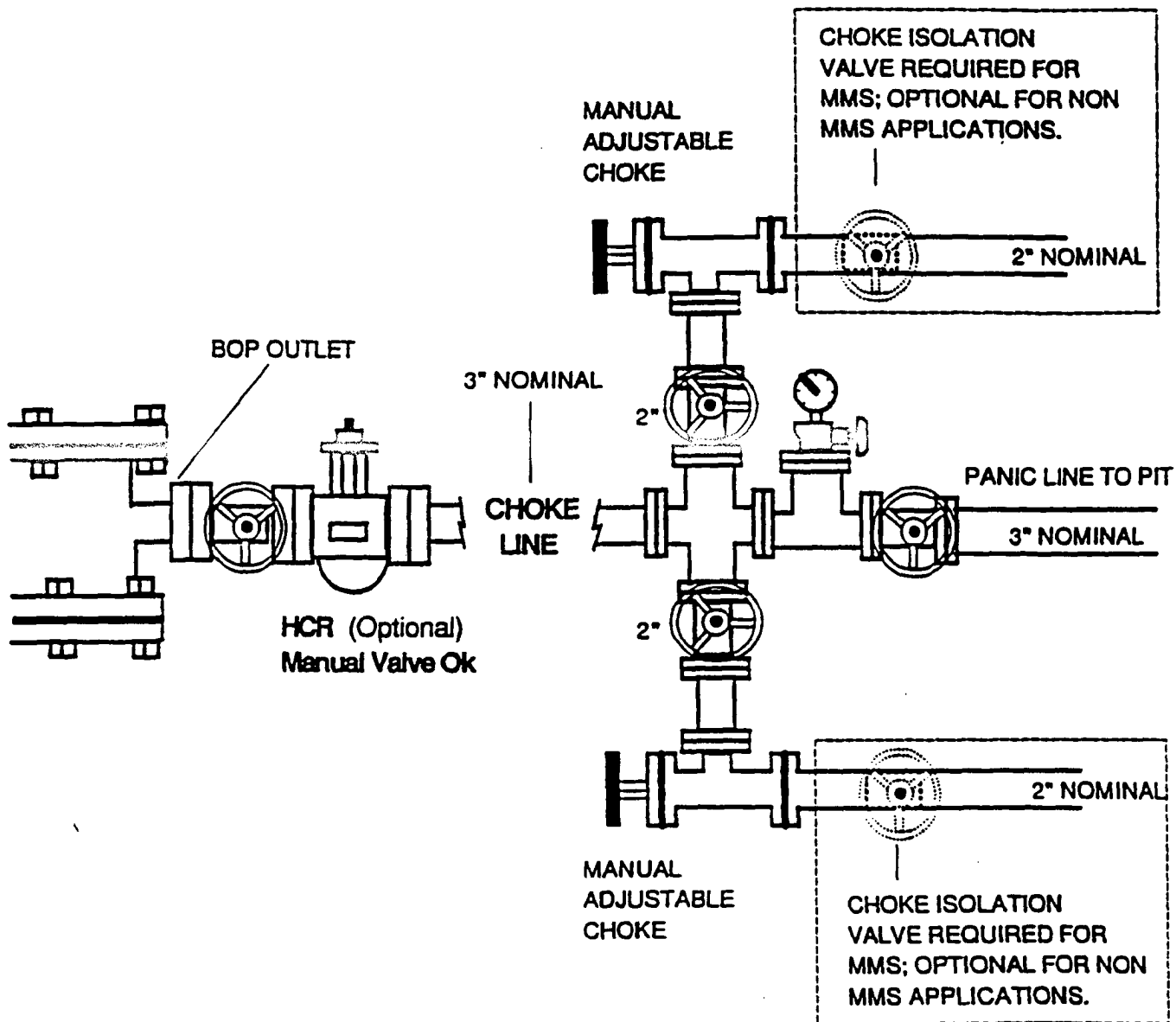
## DRILLING OPERATIONS

CLASS -1: NORMAL PRESSURE &lt; 10PPG

OPTION - 2: MMS STANDARD; SINGLE SIZE DRILL STRING



DRILLING OPERATIONS  
CHOKE MANIFOLD  
2M AND 3M SERVICE



## BLOWOUT PREVENTION EQUIPMENT SPECIFICATIONS

1. All BOP equipment shall be fluid and/or mechanically operated.
2. BOP's and all fittings will be in good working condition.
3. Equipment through which the bit must pass shall be at least as large as the casing size being drilled.
4. The nipple above the BOP shall be at least the same size as the last casing set.
5. The upper kelly cock with handle and lower kelly cock shall be rated at the BOP working pressure.
6. A floor safety valve (full opening) or drill string BOP with appropriate pressure ratings shall be available on the rig floor with connections or subs to fit any tool joint in the string.
7. The minimum size choke line shall be 3 inches nominal diameter, with a minimum size for vent lines downstream of chokes of 2 inches nominal, and vent lines which by-pass shall be a minimum of 3 inches nominal and as straight as possible.
8. All valves, fittings and lines between the closing unit and the blowout preventer stack should be of steel construction with rated working pressure at least equal to working pressure rating of the stack. Lines shall be bundled and protected from damage.
9. Minimum size for kill line is 2 inches nominal.
10. Ram type preventers shall be equipped with extension hand wheels or hydraulic locks.

