

Submit Copy To Appropriate District  
Office  
District I - (575) 393-6161  
1625 N. French Dr., Hobbs, NM 88240  
District II - (575) 748-1283  
811 S. First St., Artesia, NM 88210  
District III - (505) 334-6178  
1000 Rio Brazos Rd., Aztec, NM 87410  
District IV - (505) 476-3460  
1220 S. St. Francis Dr., Santa Fe, NM  
87505

State of New Mexico  
Energy, Minerals and Natural Resources

Form C-103  
Revised August 1, 2011

HOEBS OCD

OIL CONSERVATION DIVISION

NOV 07 2011

1220 South St. Francis Dr.  
Santa Fe, NM 87505

RECEIVED

<b>SUNDRY NOTICES AND REPORTS ON WELLS</b> (DO NOT USE THIS FORM FOR PROPOSALS TO DRILL OR TO DEEPEN OR PLUG BACK TO A DIFFERENT RESERVOIR. USE "APPLICATION FOR PERMIT" (FORM C-101) FOR SUCH PROPOSALS.)		WELL API NO. 30-025-20208
1. Type of Well: Oil Well <input checked="" type="checkbox"/> Gas Well <input type="checkbox"/> Other <input type="checkbox"/>		5. Indicate Type of Lease STATE <input type="checkbox"/> FEE <input checked="" type="checkbox"/>
2. Name of Operator Legacy Reserves Operating LP		6. State Oil & Gas Lease No.
3. Address of Operator P.O. Box 10848 Midland, TX 79702		7. Lease Name or Unit Agreement Name Learcy McBuffington
4. Well Location Unit Letter <u>P</u> : <u>330</u> feet from the <u>South</u> line and <u>990</u> feet from the <u>East</u> line Section <u>13</u> Township <u>25S</u> Range <u>37E</u> NMPM Lea County		8. Well Number <u>14</u>
11. Elevation (Show whether DR, RKB, RT, GR, etc.) 3088' KB		9. OGRID Number 240974
		10. Pool name or Wildcat Justis; Blinbry-Tubb-Drinkard

12. Check Appropriate Box to Indicate Nature of Notice, Report or Other Data

NOTICE OF INTENTION TO:

PERFORM REMEDIAL WORK ☐ PLUG AND ABANDON ☒  
TEMPORARILY ABANDON ☐ CHANGE PLANS ☐  
PULL OR ALTER CASING ☐ MULTIPLE COMPL ☐  
DOWNHOLE COMMINGLE ☐

OTHER: ☐

SUBSEQUENT REPORT OF:

REMEDIAL WORK ☐ ALTERING CASING ☐  
COMMENCE DRILLING OPNS. ☐ P AND A ☐  
CASING/CEMENT JOB ☐

OTHER: ☐

13. Describe proposed or completed operations. (Clearly state all pertinent details, and give pertinent dates, including estimated date of starting any proposed work). SEE RULE 19.15.7.14 NMAC. For Multiple Completions: Attach wellbore diagram of proposed completion or recompletion.

---- PLEASE SEE ATTACHED PROCEDURE ----

The Oil Conservation Division Must be notified  
24 hours prior to the beginning of plugging operations.

Spud Date:

Rig Release Date:

I hereby certify that the information above is true and complete to the best of my knowledge and belief.

SIGNATURE Kent Williams TITLE Sr. Engineer DATE 11/04/11

Type or print name Kent Williams E-mail address:  PHONE: (432) 689-5200  
**For State Use Only**

APPROVED BY: [Signature] TITLE Staff Manager DATE 11-8-2011  
Conditions of Approval (if any):

NOV 08 2011

## PLUG AND ABANDONMENT PROCEDURE

### **Learcy McBuffington #14**

Field/Pool: Justis (Blinebry/Tubb/Drinkard)  
Lea Co., NM

Date: 11/3/11

Engineer: Kent Williams

Company: Legacy Reserves Operating, LP

Purpose Of Procedure: Plug and abandon the subject TA'ed producer. Well TA'ed in 1992.

### **Pre-Job:**

- Check location for required dirtwork and clearing of mesquite to accommodate plugging equipment
- Test pulling unit anchors, as necessary

### **Procedure:**

1. MIRU plugging company. NU 2000# min. rated BOP.
2. RIH w/ 2 3/8" workstring tbg. Tag PBTD on Plug #1 to verify. PBTD must be at 4962' (-).  
If necessary, spot addl. cement with wireline bailer.
3. Plug # 2 - Casing Plug  
Spot 30 sxs cement from 3500'-3350' (150'). WOC. No tag necessary. POH tbg.
4. Plug #3- Casing Plug  
Perforate 7" csg at 2000'. RIH w/ tbg and pkr. Pump and squeeze 70 sxs cement . Displace cement to 1850' leaving cement plug inside csg from 1850'-2000' (150') WOC. Tag plug. POH tbg.
5. Plug #4- Casing Shoe Plug  
Perforate 7" csg at 963'. RIH w/ tbg and pkr. Pump and squeeze 40 sxs cement . Displace cement to 863' leaving cement plug inside csg from 863'-963' (100') WOC. Tag plug. POH tbg.
6. Plug #5 - Surface Plug - 400'  
Perforate 7" csg at 90'. Pump and circulate ~~30 sxs~~ cement . ~~Displace~~ to surface.
7. Cut off well head. Weld on dry hole marker. Clean location. RDMO.

### **Note:**

- Use Class "C" Cement
- Notify NMOCD 48 hrs. prior to commencing operation. NMOCD-Hobbs (575-393-6161)

### **Misc Information:**

AFE Cost - \$ xx,xxx (Gross)

AFE # Pending

Production hole calculations assume 10.000" average hole size on 7" casing string (Hole drilled w/ 8 3/4" bit).  
Also added 10% additional cement as safety factor.

## WELLBORE SCHEMATIC

### Learcy McBuffington #14

Gulf Oil Corp-Orig Operators  
330' FSL & 990' FEL . Unit Ltr P  
Sec. 13, T-25S, R-37E, Lea Co., NM  
API 30-025-20208  
GL 3074.7', KB Corr 13', KB 3088'  
Spudded 2/15/63  
Drlg Completed 3/19/63

TOC @ 53'

12-1/4" hole.

9-5/8", 40#, N-80 @ 913'.

Cmt w/ 305 sxs cmt. . TOC surface.  
(250 sxs @ shoe + 35 sxs w/ 1" top job)

TOC @ 2765' (TS)

Csg Leak 3311'-42'. Cmt sqz w/ 300 sxs.

Perf @ 3348'. Circ 125 sxs to 2765'(TS)  
TOC @ 3350' (TS)

#### CURRENT WELLBORE SKETCH

CIBP @ 4997' w/ 35sxs cmt (PBTD 4962')

Blinbry-Tubb/Drinkard

5072' - 5300'

5348'-5404'

CIBP @ 5538' w/ 2 sxs cmt (PBTD 5532')

Tubb/Drinkard

5744'-5907' and/or

5830'-42' - Questionable Perfs?

PBD @ 5912'

TD @ 5955'

8 3/4" hole.

7" , 20#,23# and,26#, N-80 @ 5955'

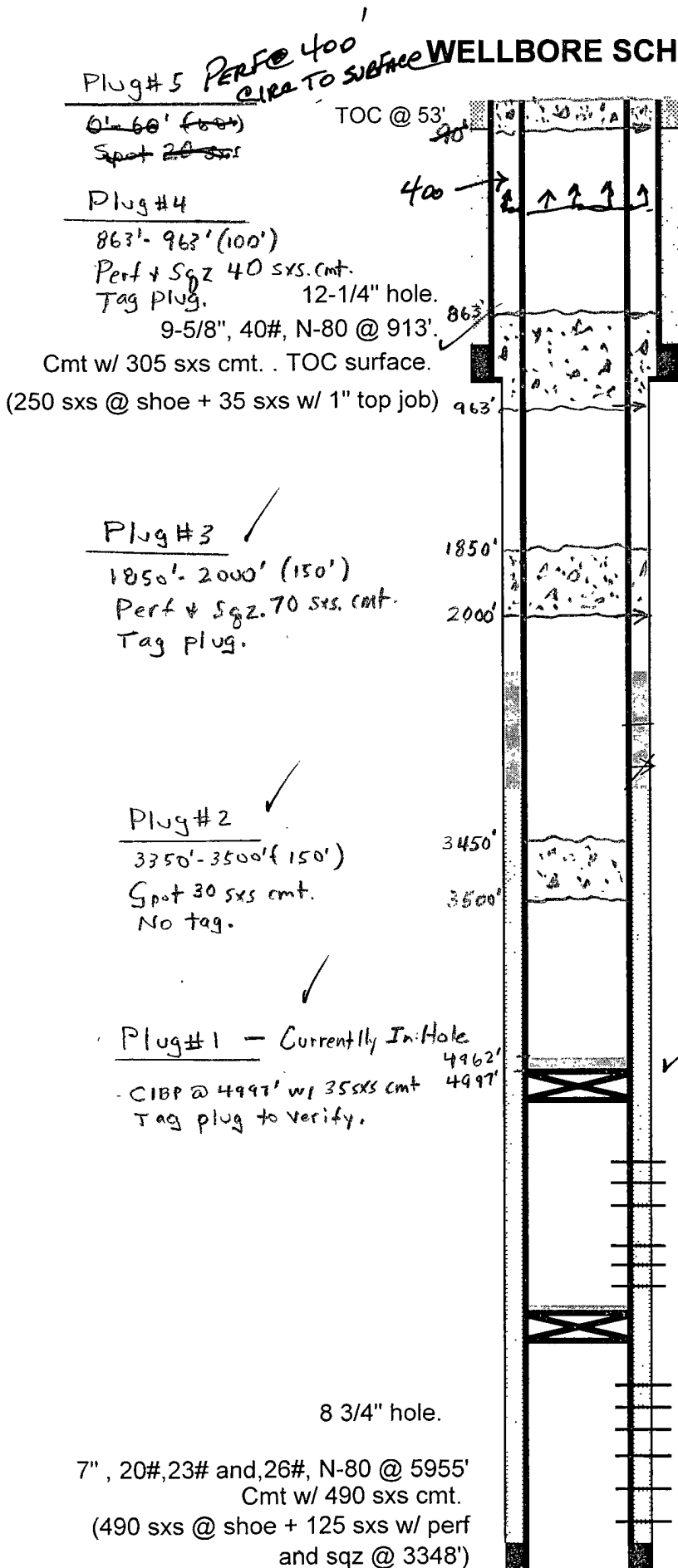
Cmt w/ 490 sxs cmt.

(490 sxs @ shoe + 125 sxs w/ perf  
and sqz @ 3348')

# WELLBORE SCHEMATIC

## Learcy McBuffington #14

Gulf Oil Corp-Orig Operators  
330' FSL & 990' FEL . Unit Ltr P  
Sec. 13, T-25S, R-37E, Lea Co., NM  
API 30-025-20208  
GL 3074.7', KB Corr 13', KB 3088'  
Spudded 2/15/63  
Drlg Completed 3/19/63



TOC @ 2765' (TS)

Csg Leak 3311'-42'. Cmt sqz w/ 300 sxs.

Perf @ 3348'. Circ 125 sxs to 2765' (TS)

TOC @ 3350' (TS)

### PROPOSED PXA WELLBORE SKETCH

CIBP @ 4997' w/ 35 sxs cmt (PBD 4962')

Blinebry-Tubb/Drinkard

5072' - 5300'

5348' - 5404'

CIBP @ 5538' w/ 2 sxs cmt (PBD 5532')

Tubb/Drinkard

5744' - 5907' and/or

5830' - 42' - Questionable Perfs?

PBD @ 5912'

TD @ 5955'