

30-025-40339

## II. H2S SAFETY EQUIPMENT AND SYSTEMS

Note: All H2S safety equipment and systems will be installed, tested, and operational when drilling reaches a depth of 500 feet above, or three days prior to penetrating the first zone containing or reasonable expected to contain H2S.

### 1. Well Control Equipment:

- A. Flare line.
- B. Choke manifold.
- C. Blind rams and pipe rams to accommodate all pipe sizes with properly sized closing unit.
- D. Auxiliary equipment may include if applicable: annular preventer & rotating head.

### 2. Protective equipment for essential personnel:

- A. Mark II Survive air 30-minute units located in the doghouse and at briefing areas, as indicated on well site diagram.

### 3. H2S detection and monitoring equipment:

- A. 1 portable H2S monitors positioned on location for best coverage and response. These units have warning lights and audible sirens when H2S levels of 20 PPM are reached.

### 4. Visual warning systems:

- A. Wind direction indicators as shown on well site diagram (Exhibit #8).
- B. Caution/Danger signs (Exhibit #7) shall be posted on roads providing direct access to location. Signs will be painted a high visibility yellow with black lettering of sufficient size to be readable at a reasonable distance from the immediate location. Bilingual signs will be used, when appropriate. See example attached.

### 5. Mud program:

- A. The mud program has been designed to minimize the volume of H2S circulated to surface. Proper mud weight, safe drilling practices and the use of H2S scavengers will minimize hazards when penetrating H2S bearing zones.

**6. Metallurgy:**

- A. All drill strings, casings, tubing, wellhead, blowout preventer, drilling spool, kill lines, choke manifold and lines, and valves shall be suitable for H<sub>2</sub>S service.
- B. All elastomers used for packing and seals shall be H<sub>2</sub>S trim.

**7. Communication:**

- A. Radio communications in company vehicles including cellular telephone and 2-way radio.
- B. Land line (telephone) communication at Office.

**8. Well testing:**

- A. Drill stem testing will be performed with a minimum number of personnel in the immediate vicinity, which are necessary to safely and adequately conduct the test. The drill stem testing will be conducted during daylight hours and formation fluids will not be flowed to the surface. All drill-stem-testing operations conducted in an H<sub>2</sub>S environment will use the closed chamber method of testing.
- B. There will be no drill stem testing.

**EXHIBIT #7**

**WARNING**

**YOU ARE ENTERING AN H<sub>2</sub>S  
AUTHORIZED PERSONNEL ONLY**

- 1. BEARDS OR CONTACT LENSES NOT ALLOWED**
- 2. HARD HATS REQUIRED**
- 3. SMOKING IN DESIGNATED AREAS ONLY**
- 4. BE WIND CONSCIOUS AT ALL TIMES**
- 5. CHECK WITH MACK ENERGY FOREMAN AT OFFICE**

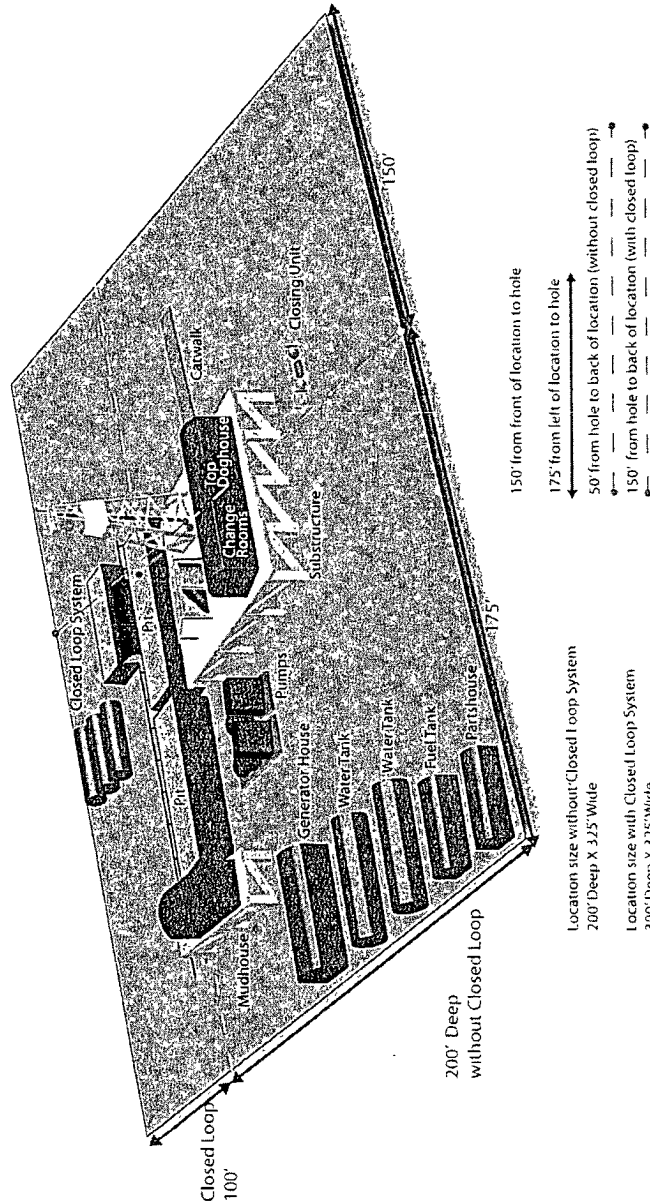
**MACK ENERGY CORPORATION**

**1-575-748-1288**

# DRILLING LOCATION H2S SAFTY EQUIPMENT

Exhibit # 8

## Location Layout



Silver Oak Drilling ~ 10 Bilco Road, Artesia, NM 88210 ~ 575.746.4405  
 info@silveroakdrilling.com ~ www.silveroakdrilling.com

**Mack Energy Corporation Call List, Eddy County**

<b>Artesia (575)</b>	<b>Cellular</b>	<b>Office</b>	<b>Home</b>
Jim Krogman.....	746-5515.....	748-1288.....	746-2674
Lonnie Archer.....	746-7889.....	748-1288.....	365-2998
Donald Archer.....	748-7875.....	748-1288.....	748-2287
Chris Davis.....	746-7132.....	748-1288.....	
Kevin Garrett.....	746-7423.....	748-1288.....	

**Agency Call List (575)****Artesia**

State Police.....	746-2703
City Police.....	746-2703
Sheriff's Office.....	746-9888
Ambulance.....	911
Fire Department.....	746-2701
LEPC (Local Emergency Planning Committee).....	746-2122
NMOCD.....	748-1283

**Carlsbad**

State Police.....	885-3137
City Police.....	885-2111
Sheriff's Office.....	887-7551
Ambulance.....	911
Fire Department.....	885-2111
LEPC (Local Emergency Planning Committee).....	887-3798
Bureau of Land Management.....	887-6544
New Mexico Emergency Response Commission.....	(505)476-9690
24 Hour.....	(505)827-9126
Natonal Emergency Response Center (Washington).....	(800)424-8802

**Emergency Services**

Boots & Coots IWC.....	1-800-256-9688 or (281)931-8884
Cudd pressure Control.....	(915)699-0139 or (915)563-3356
Halliburton.....	746-2757
B. J. Services.....	746-3569
Flight For Life-Lubbock, TX.....	(806)743-9911
Aerocare-Lubbock, TX.....	(806)747-8923
Med Flight Air Amb-Albuquerque, NM.....	(505)842-4433
Lifeguard Air Med Svc. Albuquerque, NM.....	(505)272-3115

## 9. Plans for Restoration of the Surface:

- A. Upon completion of the proposed operations, if the well is completed, any additional caliche required for facilities will be obtained from a BLM approved caliche pit.
- B. In the event of a dry hole. Topsoil removed from the drill site will be used to recontour the area to its original natural level and reseeded as per BLM specifications.
- C. If the well is productive, rehabilitation plans are as follows:
  - 1) Topsoil removed from the drill site will be used to recontour the surrounding area to the original natural level and reseeded as per BLM specifications.
- D. Exhibit #15 below shows the proposed downsized well site after Interim Reclamation. Dimensions are estimates on present conditions and are subject to change.

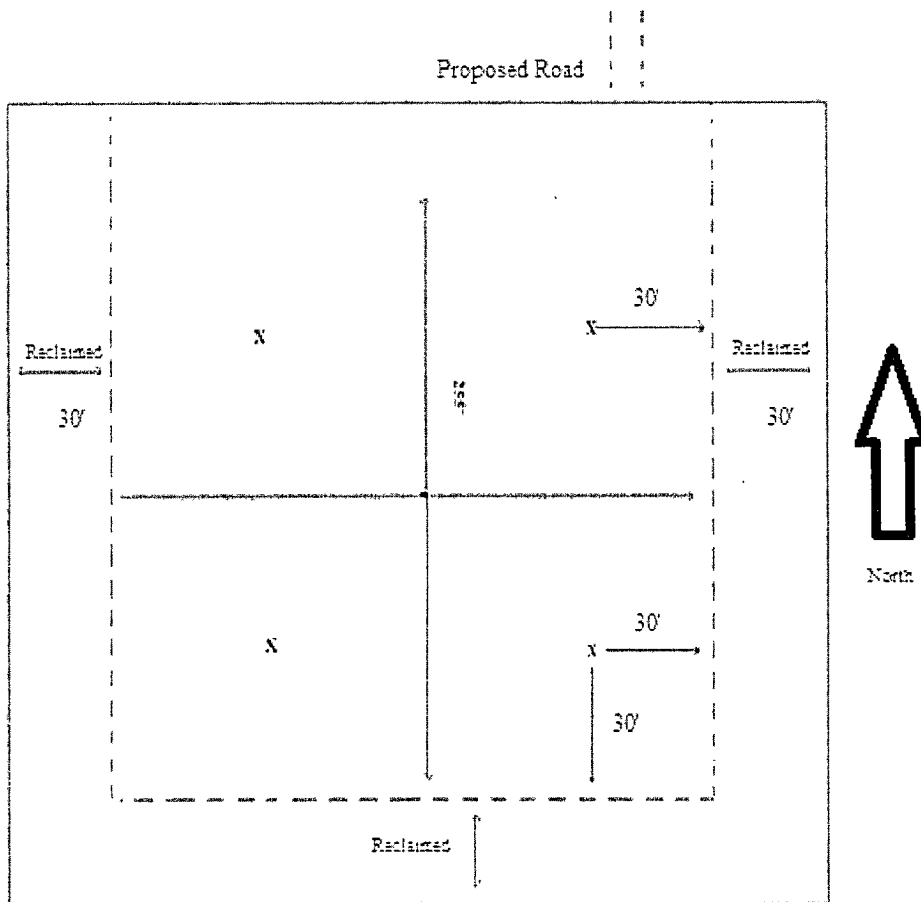


Exhibit #15

**NOV 14 2011**

**SURFACE USE AND OPERATING PLAN**

**RECEIVED**

**1. Existing Access Roads**

- A. All roads to the location are shown in Exhibit #6. The existing lease roads are illustrated and are adequate for travel during drilling and production operations. Upgrading existing roads prior to drilling well will be done where necessary.
- B. **Directions to Location:** From the intersection of Co Rd #126 (Maljamar Rd) & State Hwy #529, go West-Northwest on state highway #529 approx. 2.6 miles. Go North approx. 0.85 miles. Turn right and go East approx. 700 feet to a proposed road survey. Follow road South to this location.
- C. Routine grading and maintenance of existing roads will be conducted as necessary to maintain their condition as long as any operations continue on this lease.