

DISTRICT I
P.O. Box 1880, Hobbs, NM 88241-1880

State of New Mexico
Energy, Minerals and Natural Resources Department

Form C-102
Revised February 10, 1994
Submit to Appropriate District Office
State Lease - 4 Copies
Fee Lease - 3 Copies

DISTRICT II
P.O. Drawer 88, Artesia, NM 88211-0719

DISTRICT III
1000 Rio Brazos Ed., Artesia, NM 87410

DISTRICT IV
P.O. BOX 2088, SANTA FE, N.M. 87504-2088

OIL CONSERVATION DIVISION

P.O. Box 2088
Santa Fe, New Mexico 87504-2088

☐ AMENDED REPORT

WELL LOCATION AND ACREAGE DEDICATION PLAT

API Number 30-025-34591	Pool Code 59847	Pool Name NORTH SHOEBAR WOLF CAMP
Property Code 24402	Property Name BOYCE 15	Well Number 1
OGRID No. 147179	Operator Name CHESAPEAKE OPERATING, INC.	Elevation 3987

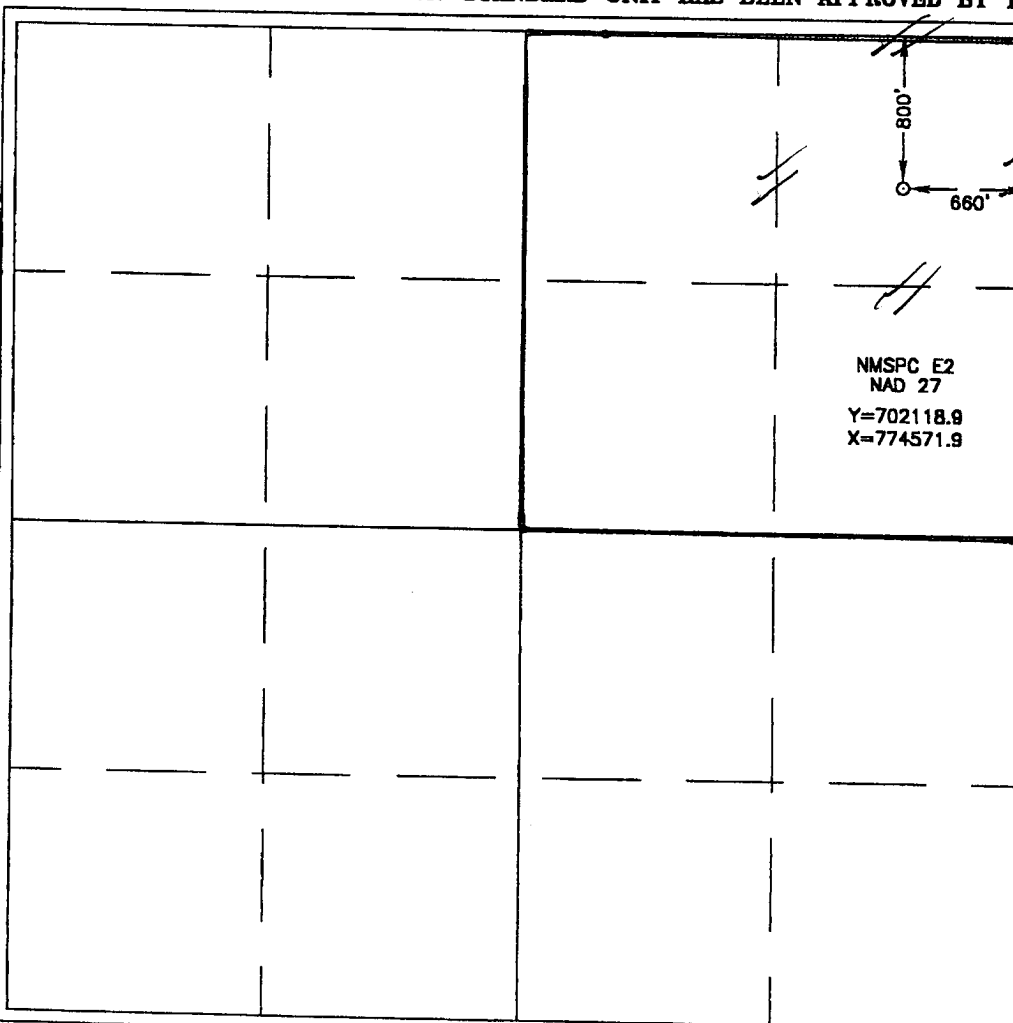
Surface Location

UL or lot No. A	Section 15	Township 16 S	Range 35 E	Lot Idn	Feet from the 800	North/South line NORTH	Feet from the 660	East/West line EAST	County LEA
---------------------------	----------------------	-------------------------	----------------------	---------	-----------------------------	----------------------------------	-----------------------------	-------------------------------	----------------------

Bottom Hole Location If Different From Surface

UL or lot No.	Section	Township	Range	Lot Idn	Feet from the	North/South line	Feet from the	East/West line	County
Dedicated Acres 40	Joint or Infill	Consolidation Code	Order No.						

NO ALLOWABLE WILL BE ASSIGNED TO THIS COMPLETION UNTIL ALL INTERESTS HAVE BEEN CONSOLIDATED
OR A NON-STANDARD UNIT HAS BEEN APPROVED BY THE DIVISION



OPERATOR CERTIFICATION

I hereby certify the the information contained herein is true and complete to the best of my knowledge and belief.

Lynda F. Townsend
Signature

Lynda F. Townsend
Printed Name

Sr. Landman
Title

3-25-04
Date

SURVEYOR CERTIFICATION

I hereby certify that the well location shown on this plat was plotted from field notes of actual surveys made by me or under my supervision, and that the same is true and correct to the best of my belief.

DECEMBER 1, 1999

Date Surveyed
Signature of Seal of Professional Surveyor
Ronald J. Kidson
NEW MEXICO
3239
12-03-99
98-11-1048

Certificate No. **RONALD J. KIDSON 3239**
CARY KIDSON 12641
MICHAEL McDONALD 12185