

Submit 3 Copies To Appropriate District Office  
District I  
1625 N French Dr, Hobbs, NM 88240  
District II  
1301 W Grand Ave, Artesia, NM 88210  
District III  
1000 Rio Brazos Rd, Aztec, NM 87410  
District IV  
1220 S St Francis Dr, Santa Fe, NM 87505

State of New Mexico  
Energy, Minerals and Natural Resources

Form C-103

May 27, 2004

HOBBS OGD

Oil Conservation Division  
1220 South St. Francis Dr.  
Santa Fe, NM 87505

DEC 02 2011

WELL API NO. 30-025-28827
5. Indicate Type of Lease STATE <input checked="" type="checkbox"/> FEE <input type="checkbox"/>
6. State Oil & Gas Lease No. L-6680
7. Lease Name or Unit Agreement Name Superior "A" State
8. Well Number 1
9. OGRID Number 151416
10. Pool name or Wildcat SWD; San Andres

SUNDRY NOTICES AND REPORTS ON WELLS  
(DO NOT USE THIS FORM FOR PROPOSALS TO DRILL OR TO DEEPEN OR PLUG BACK TO A DIFFERENT RESERVOIR. USE "APPLICATION FOR PERMIT" (FORM C-101) FOR SUCH PROPOSALS.)

1. Type of Well: Oil Well ☐ Gas Well ☐ Other SWD

2. Name of Operator  
Fasken Oil and Ranch, Ltd.

3. Address of Operator  
303 W. Wall, Suite 1800, Midland, TX 79701

4. Well Location

Unit Letter N : 660' feet from the South line and 1980' feet from the West line  
Section 7 Township 15S Range 35E NMPM County Lea

11. Elevation (Show whether DR, RKB, RT, GR, etc.)  
4038' GR

Pit or Below-grade Tank Application ☐ or Closure ☐

Pit type \_\_\_\_\_ Depth to Groundwater \_\_\_\_\_ Distance from nearest fresh water well \_\_\_\_\_ Distance from nearest surface water \_\_\_\_\_

Pit Liner Thickness: \_\_\_\_\_ mil Below-Grade Tank: Volume \_\_\_\_\_ bbls; Construction Material \_\_\_\_\_

12. Check Appropriate Box to Indicate Nature of Notice, Report or Other Data

NOTICE OF INTENTION TO:

PERFORM REMEDIAL WORK ☐ PLUG AND ABANDON ☒  
TEMPORARILY ABANDON ☐ CHANGE PLANS ☐  
PULL OR ALTER CASING ☐ MULTIPLE COMPL ☐

SUBSEQUENT REPORT OF:

REMEDIAL WORK ☐ ALTERING CASING ☐  
COMMENCE DRILLING OPNS. ☐ P AND A ☐  
CASING/CEMENT JOB ☐

OTHER: ☐

OTHER: ☐

13. Describe proposed or completed operations. (Clearly state all pertinent details, and give pertinent dates, including estimated date of starting any proposed work). SEE RULE 1103. For Multiple Completions: Attach wellbore diagram of proposed completion or recompletion.

Fasken Oil and Ranch, Ltd. proposes to Plug & Abandon the Superior "A" State No. 1. Please see attached procedure and current and proposed plugging and abandon wellbore diagrams.

**The Oil Conservation Division**  
**MUST BE NOTIFIED 24 Hours**  
**Prior to the beginning of operations**

\* SEE ADDITIONAL PLUG  
STEP 14B. YWAB.

I hereby certify that the information above is true and complete to the best of my knowledge and belief. I further certify that any pit or below-grade tank has been/will be constructed or closed according to NMOCD guidelines ☐, a general permit ☐ or an (attached) alternative OCD-approved plan ☐.

SIGNATURE Kim Tyson TITLE Regulatory Analyst DATE 12-1-2011

Type or print name Kim Tyson

E-mail address: kimt@forl.com

Telephone No. (432) 687-1777

For State Use Only

APPROVED BY: Maley Brown TITLE Compliance Officer DATE 12/6/2011

Conditions of Approval (if any):

DEC 06 2011

**Plug and Abandon Procedure  
Superior A State No. 1  
660' FSL and 1980' FWL  
Section 7, T15S, R25E  
Lea County, NM**

<b>OBJECTIVE:</b>	Plug and Abandon
<b>API Number:</b>	30-025-28827
<b>WELL DATA:</b>	
13-3/8" 48# H-40 casing:	Set at 440' w/ 460 sx Class C, cement circ.
8-5/8" 24 & 28# K-55 casing:	Set at 4556' w/ 2040 sx, cement circ.
5-1/2" 15.5 & 17# K-55/N-80 casing:	Set at 10,500', Primary TOC @ 4070' by CBL. Surface to 72.66' 17# K-55 LTC, 72.66' – 6688.05" 15.5# K-55 LTC, 6688.05' – 9500.46' 17# K-55 LTC, 9500.46' – 10,500' 17# N-80.
Tubing Detail:	none
Perfs& Plugs:	CIBP @ 5800' w/30' of cement Abandoned: 5873'-6086' CIBP @ 6350' w/ 35' cmt DV tool @ 7909' CIBP @ 10,300' w/ 35' of cement Abandoned: 10,354'-61', 10,364-66' CIBP @ 10,448' Abandoned: 10,467'-73'
KB:	16'
TD:	10,500'
PBTD:	5770' Cement on CIBP
Status:	TA'd

1. Notify OCD in Hobbs @ 575-393-6161 of the intent to plug and abandon 24 hours prior to rigging up on well.
2. Make sure mast anchors have been tested and tagged in last 24 months.
3. RUPU and set rig mats, pipe racks, catwalk, 250 bbl flow-back tank w/ gas-buster, and 500 frac tank on location.
4. Receive 5900' 2-7/8" EUE 8rd J-55 work string.
5. Lay flow line to flow-back tank. Open casing valve and bleed pressure off 5-1/2" casing and check surface casing and intermediate casing pressures.
6. ND wellhead and NU 7-1/16" 3K manual BOP with 2-7/8" pipe rams and blind rams. Have set of 5-1/2" pipe rams and blind rams on hand.
7. PU and RIW with collar, perforated sub, seating nipple and 2-7/8" EUE 8rd J-55 work string. Tag cement at +/- 5770'. Displace well with 35 bbls mud laden brine water to bring top of mud laden brine above 4500'. Mix and spot <sup>25</sup>10 sx Class "C" with 2% CaCl 14.8 ppg, 1.32 ft<sup>3</sup>/sk yield cement to +/- 5670'.
8. POW and LD tubing with EOT at 4700' and mix and spot 45 sx Class "C" with 2% CaCl 14.8 ppg, 1.32 ft<sup>3</sup>/sk yield cement to +/- 4300'. POW to 3000' and WOC 4 hours and tag. If TOC is below 4300' notify OCD for recommended volume and spot additional cement to bring TOC above 4300' and notify Midland office. Displace well with 10 bbls of mud-laden brine water to bring mud laden brine water above 4000'.
9. POW standing 4100' of tubing in derrick and LD remainder of tubing.

10. ND BOP. ND "B" section of wellhead, remove secondary seal and weld and strap 5-1/2" lift sub onto casing stub. Attempt to remove 5-1/2" slips from wellhead. If able to remove slips NU BOP w/ 5-1/2" casing rams. Work casing up and down for 30 minutes prior to next step.
11. Run free point on 5-1/2" casing to 4000'. If casing is free at or below 4500' RUWL, RIW and cut casing @ deepest free point. If casing is not free above 4000', call Midland office to contact OCD before proceeding. Cut off casing at desired point, POW and RDWL. RU 5-1/2" casing equipment.
12. Receive pin end thread protectors for the amount of casing that is to be pulled. RU casing crew and POW laying down 5-1/2" casing while installing pin-end thread protectors. If unable to move casing attempt to pump freshwater down 8-5/8"-X 5-1/2" annulus while reciprocating 5-1/2" casing until pipe is free.
13. NU wellhead flange and change rams in BOP back to 2-7/8" and NU BOP. RIW with collar, perforated sub, seating nipple and 2-7/8" tubing to +/-4050' stub, or 50' below cutoff. Mix and spot 80 sx Class "C" with 2% CaCl 14.8 ppg, 1.32 ft<sup>3</sup>/sk yield cement from 4050'-3800', if casing is cut lower than 4000' pump enough cement to bring TOC above 3800'. POW to 2500' and WOC 4 hours.
14. RIW to tag TOC @ +/- 3800'. Notify Midland office and OCD if TOC is below 3800'. Spot cement to bring TOC to 3800'. After approval is given continue with procedure Displace well with 130 bbls of mud-laden brine water to bring mud laden brine water above 1750'.
- \* 14.B SPOT 35 SXs CMT @ 3000' (BASE OF SALT).
15. POW and LD tubing with EOT at 2000' and mix and spot 80 sx Class "C" with 2% CaCl 14.8 ppg, 1.32 ft<sup>3</sup>/sk yield cement to +/- 1750'. ↑ TOP OF SALT
16. POW while LD tubing with EOT at 500'. POW displacing cement to surface. Visually verify that cement is to surface
17. RD plugging rig and equipment. Empty work pit and fill pit. Dig out rig anchors.
18. Dig out and cut-off well head 36" below ground level. Weld 1/4" plate with a 2000 psi ball valve and dry hole marker on top of well & 48" AGL with well information as follows:

Fasken Oil and Ranch  
 Superior A State No. 1  
 660' FSL and 1980' FWL  
 Section 7, T15S, R25E  
 Lea County, NM  
 30-025-28827

# Superior A State No. 1 SWD

Operator: **Fasken Oil and Ranch, Ltd.**  
 Location: 660' FSL and 1980' FWL  
 Sec 7, T15S, R25E  
 Lea County, NM

API #: 30-025-28827

TD: 10,500'  
 PBTD: +/- 5770'  
 Completed: 10/29/1984

Casing: 13-3/8" 48# H-40 ST&C @ 440'  
 w/460 sks "C"  
 TOC surf  
 8-5/8" 24&28# K-55, S-80 LT&C @ 4556'  
 w/2040sx  
 TOC surf  
 5-1/2" 15.5&17#/ft K-55 @ 10,500'  
 w/ 1320 sx  
 TOC 4470' by CBL

Howco FS	1.68
1 jt 5-1/2", 17# N-80 LTC csg	43.4
Howco FC	1.42
28 jts 5-1/2", 17# N-80 LTC csg	986.16
41 jts 5-1/2", 17 # K-55 LTC csg	1558.19
Howco DV tool	3.05
31 jts 5-1/2", 17# K-55 LTC csg	1251.17
168 jts 5-1/2", 15.5#, K-55 LTC csg	6615.39
2 jts 5-1/2", 17#, K-55 LTC csg	72.66
	<u>10533.12</u>

Hole Sizes: 17-1/2" 440'

11" 4556'

7-7/8" 10,500'

Perfs: 10467'-73'

10364'-73'

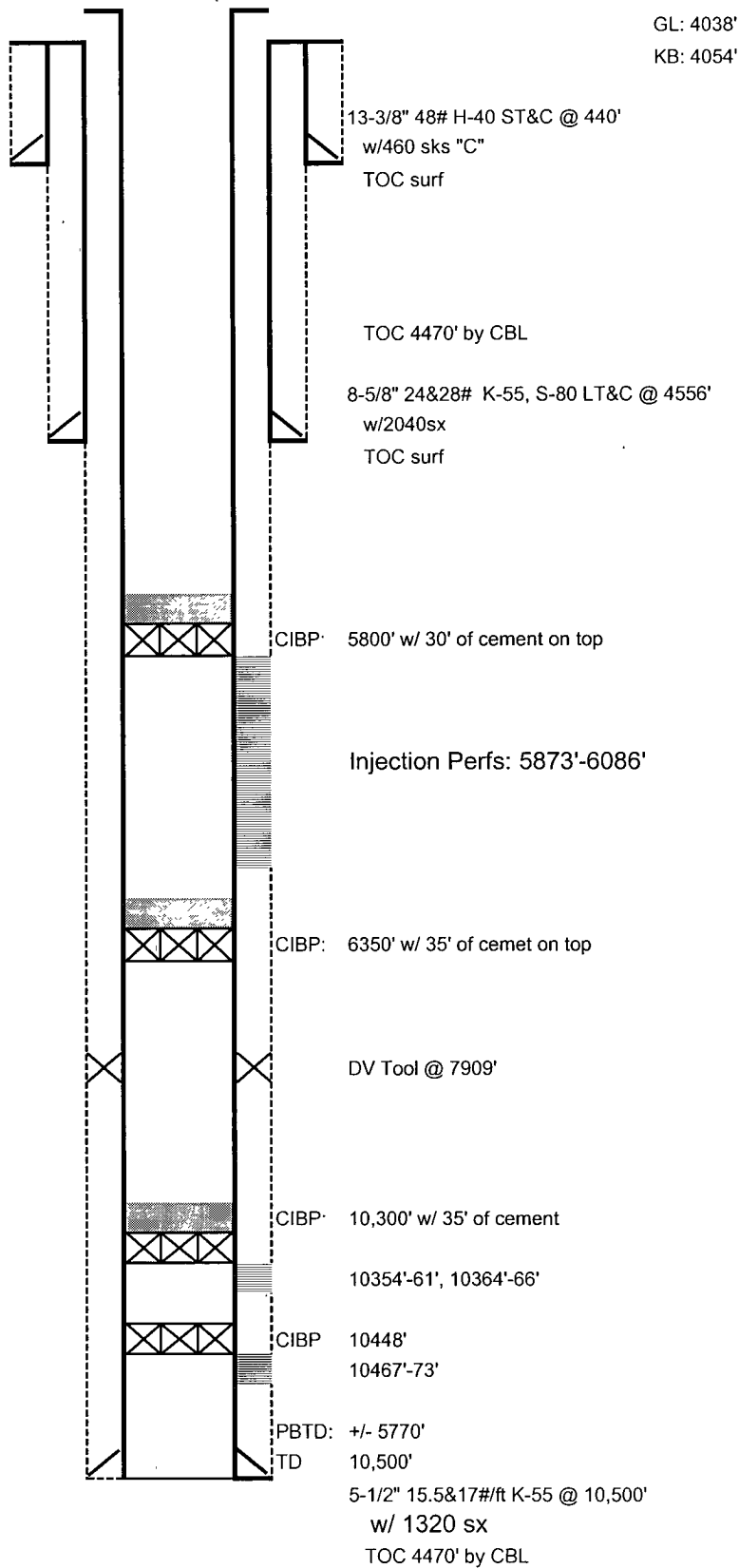
5873-6086

CIBP: 10448'

10,300' w/ 35' of cement

6350' w/ 35' of cement on top

5800' w/ 30' of cement on top



# Superior A State No. 1 SWD Proposed P & A

GL 4038'

KB. 4054'

Operator: **Fasken Oil and Ranch, Ltd.**

Location: 660' FSL and 1980' FWL

Sec 7, T15S, R25E

Lea County, NM

13-3/8" 48# H-40 ST&C @ 440'

w/460 sks "C"

API #: 30-025-28827

TOC surf

TD: 10,500'

PBTD: +/- 5770'

Completed: 10/29/1984

Casing: 13-3/8" 48# H-40 ST&C @ 440'

w/460 sks "C"

TOC surf

8-5/8" 24&28# K-55, S-80 LT&C @ 4556'

w/2040sx

TOC surf

5-1/2" 15 5&17#/ft K-55 @ 10,500'

w/ 1320 sx

TOC 4470' by CBL

Howco FS	1.68
1 jt 5-1/2", 17# N-80 LTC csg	43.4
Howco FC	1.42
28 jts 5-1/2", 17# N-80 LTC csg	986.16
41 jts 5-1/2", 17 # K-55 LTC csg	1558.19
Howco DV tool	3.05
31 jts 5-1/2", 17# K-55 LTC csg	1251.17
168 jts 5-1/2", 15.5#, K-55 LTC csg	6615.39
2 jts 5-1/2", 17#, K-55 LTC csg	72.66
	<u>10533.12</u>

Hole Sizes: 17-1/2" 440'

11" 4556'

7-7/8" 10,500'

Perfs: 10467'-73'

10364'-73'

5873-6086

CIBP: 10448'

10,300' w/ 35' of cement

6350' w/ 35' of cement on top

5800' w/ 30' of cement on top

