

District I  
1625 N French Dr., Hobbs, NM 88240  
Phone (575) 393-6161 Fax (575) 393-0720  
District II  
811 S First St., Artesia, NM 88210  
Phone (575) 748-1283 Fax (575) 748-9720  
District III  
1000 Rio Brazos Road, Aztec, NM 87410  
Phone (505) 334-6178 Fax (505) 334-6170  
District IV  
1220 S St Francis Dr., Santa Fe, NM 87505  
Phone (505) 476-3460 Fax (505) 476-3462

State of New Mexico  
Energy Minerals and Natural Resources  
Oil Conservation Division  
1220 South St. Francis Dr.  
Santa Fe, NM 87505

Form C-101  
Revised August 1, 2011

Permit

HOBBS OCD  
DEC 06 2011  
RECEIVED

APPLICATION FOR PERMIT TO DRILL, RE-ENTER, DEEPEN, PLUGBACK, OR ADD A ZONE

<sup>1</sup> Operator Name and Address Texland Petroleum-Hobbs, LLC 777 Main Street, Suite 3200 Fort Worth, Texas 76102		<sup>2</sup> OGRID Number 113315
		<sup>3</sup> API Number 30-025-35866
<sup>4</sup> Property Code 025697	<sup>5</sup> Property Name W.D. Grimes (NCT-A)	<sup>6</sup> Well No #26H

<sup>7</sup> Surface Location

UL - Lot D	Section 32	Township 18-S	Range 38-E	Lot Idn	Feet from 585	N/S Line North	Feet From 900	E/W Line West	County Lea
---------------	---------------	------------------	---------------	---------	------------------	-------------------	------------------	------------------	---------------

<sup>8</sup> Pool Information

Hobbs, Upper Blinebry	
-----------------------	--

Additional Well Information

<sup>9</sup> Work Type RC - <i>Horizontal</i>	<sup>10</sup> Well Type O	<sup>11</sup> Cable/Rotary R	<sup>12</sup> Lease Type S	<sup>13</sup> Ground Level Elevation 3637'
<sup>14</sup> Multiple N	<sup>15</sup> Proposed Depth TD 6058; TMD-9576'	<sup>16</sup> Formation Blinebry	<sup>17</sup> Contractor Key	<sup>18</sup> Spud Date ASAP
Depth to Ground water 90'		Distance from nearest fresh water well 4 19 miles		Distance to nearest surface water 2 76 miles

<sup>19</sup> Proposed Casing and Cement Program

Type	Hole Size	Casing Size	Casing Weight/ft	Setting Depth	Sacks of Cement	Estimated TOC
Existing J55	12 1/4"	8 5/8"	24#	1528'	800 sks	surface
Existing J55	7 7/8"	5 1/2"	15 5 & 17#	6050'	1510 sks	surface
n/a	6 1/4"	Open hole	n/a	9576'	n/a	n/s

Casing/Cement Program: Additional Comments

See attached Current and Proposed wellbore schematics for additional information Exhibits "A" and "B"
---

Proposed Blowout Prevention Program

Type	Working Pressure	Test Pressure	Manufacturer
Hydraulic Double Ram	3000 PSI	1500 PSI	Townsend

I hereby certify that the information given above is true and complete to the best of my knowledge and belief  
I further certify that the drilling pit will be constructed according to NMOCD guidelines ☒ a general permit ☐, or an (attached) alternative OCD-approved plan ☐.

Printed name Vickie Smith  
*Vickie Smith*

Title Regulatory Analyst

E-mail Address vsmith@texpetro.com

Date December 6, 2011

Phone 575-397-7450

OIL CONSERVATION DIVISION

Approved By

Title

Approved Date DEC 08 2011

Expiration Date

Conditions of Approval Attached

Permit Expires 2 Years From Approval  
Date Unless Drilling Underway

*Horizontal*

DEC 08 2011

DISTRICT I  
1625 N French Dr., Hobbs, NM 88240  
Phone: (505) 393-6161 Fax: (505) 393-0720

DISTRICT II  
811 S First St., Artesia, NM 88210  
Phone: (505) 748-1281 Fax: (505) 748-9720

DISTRICT III  
1000 Rio Brazos Road, Aztec, NM 87410  
Phone: (505) 314-6178 Fax: (505) 314-6170

DISTRICT IV  
1220 S St. Francis Dr., Santa Fe, NM 87505  
Phone: (505) 476-3460 Fax: (505) 476-3462

State of New Mexico  
Energy, Minerals & Natural Resources Department  
OIL CONSERVATION DIVISION  
1220 South St. Francis Dr.  
Santa Fe, New Mexico 87505

HOBBS OCD  
DEC 06 2011

Form C-102  
Revised August 1, 2011  
Submit one copy to appropriate  
District Office

☐ AMENDED REPORT

RECEIVED

WELL LOCATION AND ACREAGE DEDICATION PLAT

API Number <b>30-025-35866</b>	Pool Code <b>31680</b>	Pool Name <b>Hobbs, Upper Blinberry</b>
Property Code <b>025697</b>	Property Name <b>W.D. GRIMES (NCT-A)</b>	Well Number <b>26H</b>
OGRID No. <b>113315</b>	Operator Name <b>TEXLAND PETROLEUM - Hobbs, LLC</b>	Elevation <b>3637'</b>

Surface Location									
UL or lot No.	Section	Township	Range	Lot Idn	Feet from the	North/South line	Feet from the	East/West line	County
D	32	18-S	38-E		585	NORTH	900	WEST	LEA

Bottom Hole Location If Different From Surface									
UL or lot No.	Section	Township	Range	Lot Idn	Feet from the	North/South line	Feet from the	East/West line	County
N	32	18-S	38-E		1186	SOUTH	1895	WEST	LEA

Penetration Point Location									
UL or lot No.	Section	Township	Range	Lot Idn	Feet from the	North/South line	Feet from the	East/West line	County
D	32	18-S	38-E		761	NORTH	898	WEST	LEA

Dedicated Acres <b>320</b>	Joint or Infill	Consolidation Code	Order No.
-------------------------------	-----------------	--------------------	-----------

NO ALLOWABLE WILL BE ASSIGNED TO THIS COMPLETION UNTIL ALL INTERESTS HAVE BEEN CONSOLIDATED OR A NON-STANDARD UNIT HAS BEEN APPROVED BY THE DIVISION

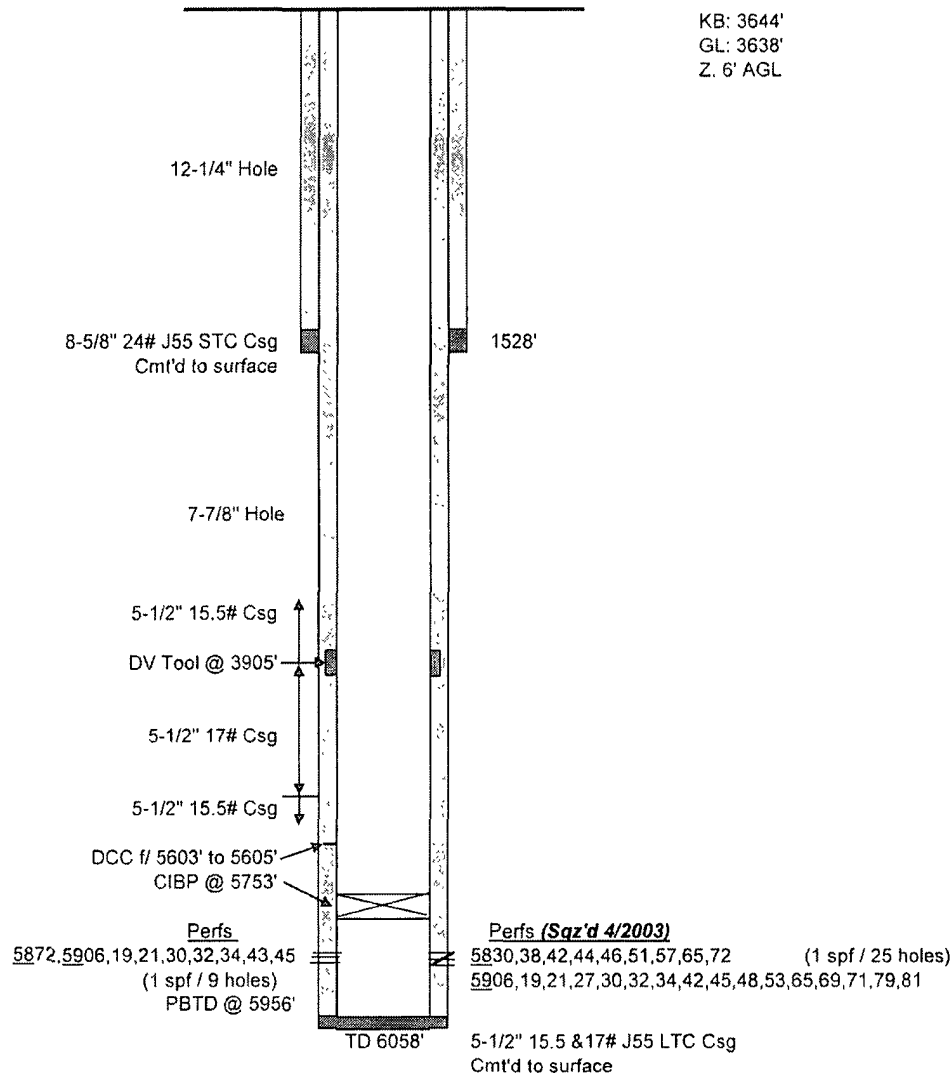
		<p>GEODETIC COORDINATES NAD 27 NME</p> <p>SURFACE LOCATION Y=623721.5 N X=856043.6 E LAT.=32 709365" N LONG.=103.175819" W</p> <p>BOTTOM HOLE LOCATION Y=620234.6 N X=857084.1 E</p> <p>PENETRATION POINT Y=623545.5 N X=856044.8 E</p>	<p>OPERATOR CERTIFICATION</p> <p>I hereby certify that the information herein is true and complete to the best of my knowledge and belief, and that this organization either owns a working interest or unleased mineral interest in the land including the proposed bottom hole location or has a right to drill this well at this location pursuant to a contract with an owner of such mineral or working interest, or to a voluntary pooling agreement or a compulsory pooling order heretofore entered by the division.</p> <p><i>Vickie Smith</i> Signature Date <i>Vickie Smith 12/5/11</i> Printed Name <i>vsmith@texpetco.com</i> E-mail Address</p>
<p>CORNER COORDINATES</p> <p>A - Y=624293.3 N, X=855136.7 E B - Y=624312.9 N, X=856458.2 E C - Y=624332.5 N, X=857779.7 E D - Y=619057.1 N, X=857846.1 E E - Y=619043.0 N, X=856525.7 E F - Y=619028.9 N, X=855205.3 E G - Y=621654.1 N, X=855170.7 E</p>		<p>SURVEYOR CERTIFICATION</p> <p>I hereby certify that the well location shown on this plat was plotted from field notes of actual surveys made by me or under my supervision, and that the same is true and correct to the best of my belief.</p> <p>SEPTEMBER 27, 2011</p> <p>Date of Survey Signature &amp; Seal of Professional Surveyor: <i>GARY G. EIDSON</i> 12841 12/27/11</p> <p>Certificate Number Gary G. Eidson 12641 Ronald J. Eidson 3239 ACR JWSC W.O. 11.11 2009</p>	

# Exhibit "A"

## Grimes NCT-A #26 Current Wellbore Schematic

Dr'd 6/02  
TA'd 9/06

KB: 3644'  
GL: 3638'  
Z: 6' AGL



G.Mendenhall  
9/16/2011

Exhibit "B"

# Grimes NCT-A #26

Proposed Wellbore Schematic

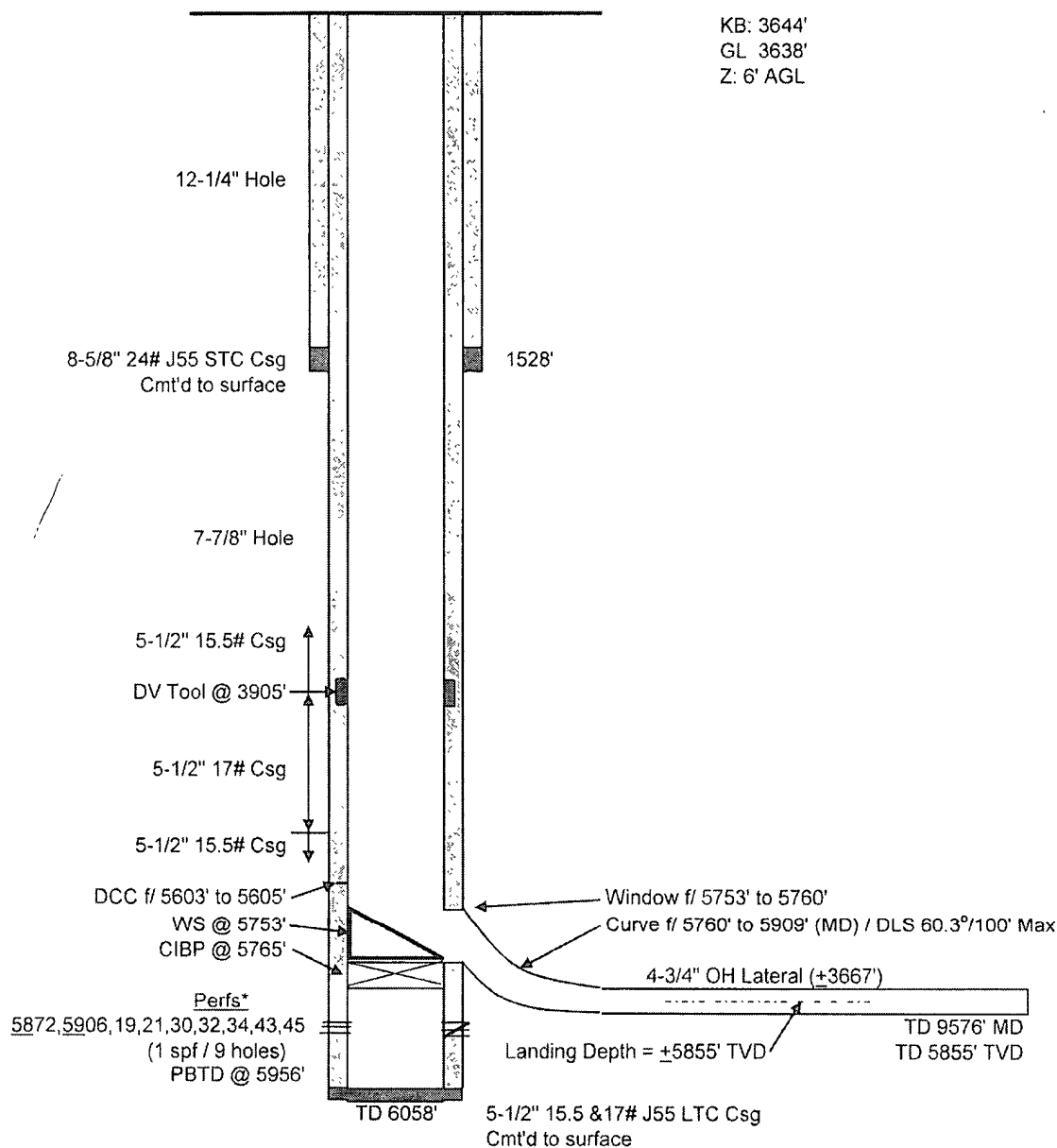
Drl'd 6/02

TA'd 9/06

KB: 3644'

GL 3638'

Z: 6' AGL



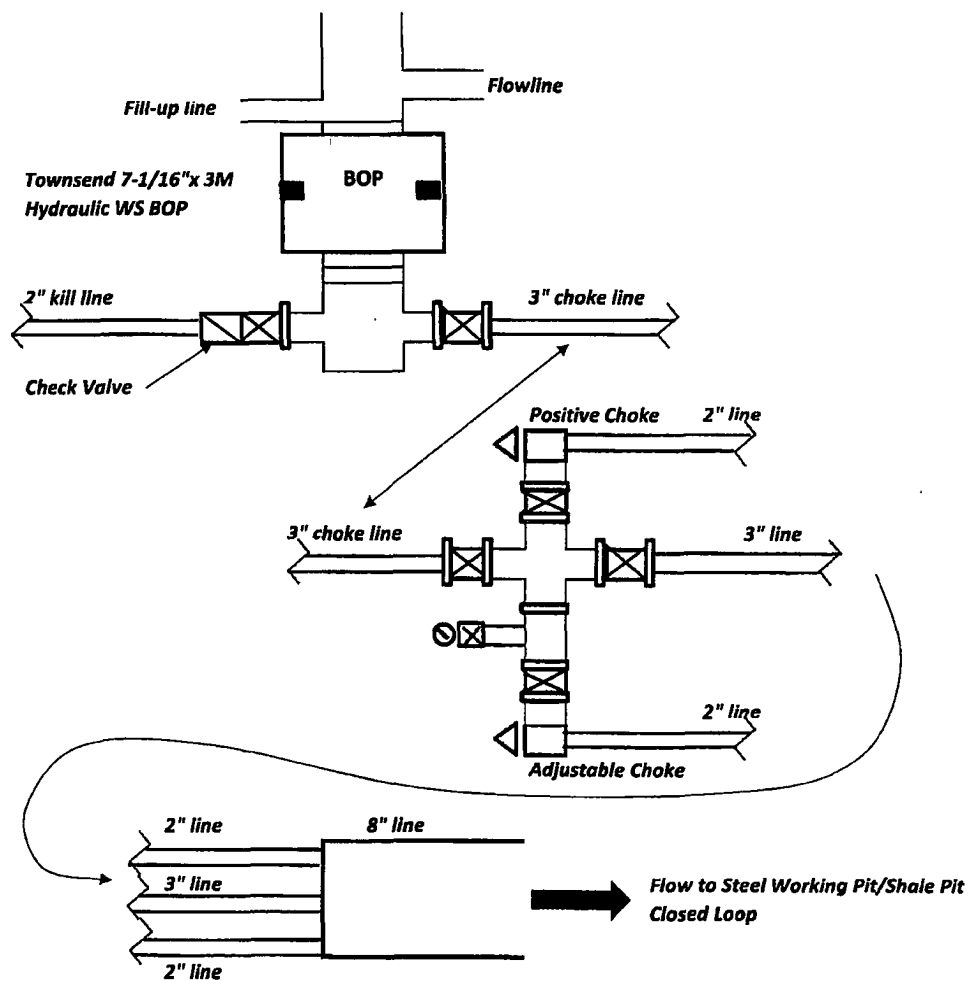
G. Mendenhall  
9/16/2011

## \*Perfs (Sgz'd 4/2003)

5830, 38, 42, 44, 46, 51, 57, 65, 72 (1 spf / 25 holes)  
5906, 19, 21, 27, 30, 32, 34, 42, 45, 48, 53, 65, 69, 71, 79, 81

Exhibit "C"

**Horizontal Rig 7-1/16" BOP Schematic**



**RIG 1**

Exhibit "D"

