

District I
1625 N. French Dr., Hobbs, NM 88240
District II
1301 W. Grand Avenue, Artesia, NM 88210
District III
1000 Rio Brazos Road, Aztec, NM 87410
District IV
1220 S. St. Francis Dr., Santa Fe, NM 87505

State of New Mexico
Energy Minerals and Natural Resources
Department
Oil Conservation Division
1220 South St. Francis Dr.
Santa Fe, NM 87505

Form C-144 CLEZ
July 21, 2008

For closed-loop systems that only use above ground steel tanks or haul-off bins and propose to implement waste removal for closure, submit to the appropriate NMOC District Office.

Closed-Loop System Permit or Closure Plan Application

(that only use above ground steel tanks or haul-off bins and propose to implement waste removal for closure)

Type of action: ☒ Permit ☐ Closure

Instructions: Please submit one application (Form C-144 CLEZ) per individual closed-loop system request. For any application request other than for a closed-loop system that only use above ground steel tanks or haul-off bins and propose to implement waste removal for closure, please submit a Form C-144.

Please be advised that approval of this request does not relieve the operator of liability should operations result in pollution of surface water, ground water or the environment. Nor does approval relieve the operator of its responsibility to comply with any other applicable governmental authority's rules, regulations or ordinances.

1. Operator: ConocoPhillips Company OGRID #: 217817
Address: 3300 N."A" St, Bldg 6 Midland, TX 79705
Facility or well name: Ruby Federal #9
API Number: 30-025-40360 OCD Permit Number: P1-03979
U/L or Qtr/Qtr O Section 18 Township 17S Range 32E County: Lca
Center of Proposed Design: Latitude _____ Longitude _____ NAD: ☐ 1927 ☐ 1983
Surface Owner: ☒ Federal ☐ State ☐ Private ☐ Tribal Trust or Indian Allotment

2. ☒ **Closed-loop System:** Subsection H of 19.15.17.11 NMAC
Operation: ☒ Drilling a new well ☐ Workover or Drilling (Applies to activities which require prior approval of a permit or notice of intent) ☐ P&A
☒ Above Ground Steel Tanks or ☒ Haul-off Bins

3. **Signs:** Subsection C of 19.15.17.11 NMAC
☐ 12"x 24", 2" lettering, providing Operator's name, site location, and emergency telephone numbers
☐ Signed in compliance with 19.15.3.103 NMAC

4. **Closed-loop Systems Permit Application Attachment Checklist:** Subsection B of 19.15.17.9 NMAC
Instructions: Each of the following items must be attached to the application. Please indicate, by a check mark in the box, that the documents are attached.
☒ Design Plan - based upon the appropriate requirements of 19.15.17.11 NMAC
☒ Operating and Maintenance Plan - based upon the appropriate requirements of 19.15.17.12 NMAC
☒ Closure Plan (Please complete Box 5) - based upon the appropriate requirements of Subsection C of 19.15.17.9 NMAC and 19.15.17.13 NMAC
☐ Previously Approved Design (attach copy of design) API Number: _____
☐ Previously Approved Operating and Maintenance Plan API Number: _____

5. **Waste Removal Closure For Closed-loop Systems That Utilize Above Ground Steel Tanks or Haul-off Bins Only:** (19.15.17.13.D NMAC)
Instructions: Please identify the facility or facilities for the disposal of liquids, drilling fluids and drill cuttings. Use attachment if more than two facilities are required.
Disposal Facility Name: Controlled Recovery Disposal Facility Permit Number: R9166
Disposal Facility Name: _____ Disposal Facility Permit Number: _____
Will any of the proposed closed-loop system operations and associated activities occur on or in areas that will not be used for future service and operations?
☐ Yes (If yes, please provide the information below) ☒ No
Required for impacted areas which will not be used for future service and operations:
☐ Soil Backfill and Cover Design Specifications - based upon the appropriate requirements of Subsection H of 19.15.17.13 NMAC
☐ Re-vegetation Plan - based upon the appropriate requirements of Subsection I of 19.15.17.13 NMAC
☐ Site Reclamation Plan - based upon the appropriate requirements of Subsection G of 19.15.17.13 NMAC

6. **Operator Application Certification:**

I hereby certify that the information submitted with this application is true, accurate and complete to the best of my knowledge and belief.

Name (Print): Brian D Maiorino Title: Regulatory Specialist

Signature: [Signature] Date: 10/10/2011

e-mail address: brian.d.maiorino@conocophillips.com Telephone: (432)688-6913

7. **OCD Approval:** ☐ Permit Application (including closure plan) ☐ Closure Plan (only)

OCD Representative Signature: _____

Approval Date: 12/8/11

Title: _____

OCD Permit Number: PL-D3979

8. **Closure Report (required within 60 days of closure completion):** Subsection K of 19.15.17.13 NMAC

Instructions: Operators are required to obtain an approved closure plan prior to implementing any closure activities and submitting the closure report. The closure report is required to be submitted to the division within 60 days of the completion of the closure activities. Please do not complete this section of the form until an approved closure plan has been obtained and the closure activities have been completed.

☐ Closure Completion Date: _____

9. **Closure Report Regarding Waste Removal Closure For Closed-loop Systems That Utilize Above Ground Steel Tanks or Haul-off Bins Only:**

Instructions: Please indentify the facility or facilities for where the liquids, drilling fluids and drill cuttings were disposed. Use attachment if more than two facilities were utilized.

Disposal Facility Name: _____ Disposal Facility Permit Number: _____

Disposal Facility Name: _____ Disposal Facility Permit Number: _____

Were the closed-loop system operations and associated activities performed on or in areas that *will not* be used for future service and operations?

☐ Yes (If yes, please demonstrate compliance to the items below) ☐ No

Required for impacted areas which will not be used for future service and operations:

☐ Site Reclamation (Photo Documentation)

☐ Soil Backfilling and Cover Installation

☐ Re-vegetation Application Rates and Seeding Technique

10. **Operator Closure Certification:**

I hereby certify that the information and attachments submitted with this closure report is true, accurate and complete to the best of my knowledge and belief. I also certify that the closure complies with all applicable closure requirements and conditions specified in the approved closure plan.

Name (Print): Brian D Maiorino

Title: Regulatory Specialist

Signature: _____

Date: _____

e-mail address: brian.d.maiorino@conocophilips.com

Telephone: (432)688-6913

ConocoPhillips Company
Closed Loop System Design, Operating and Maintenance, and Closure Plan

ConocoPhillips proposes the following plan for design, operating and maintenance, and closure of our proposed closed loop system for the above named well:

- 1 We propose to use a closed loop system with steel pits, haul-off bins, and frac tanks for containing all cuttings, solids, mud, water, brine, and liquids. We will not dig a pit, nor will we use a drying pad, nor will we dispose of or bury any waste on location.

All drilling waste and all drilling fluids (fresh water, brine, mud, cuttings, drill solids, cement returns, and any other liquid or solid that may be involved) will be contained on location in the rig's steel pits or in haul-off bins or in frac tanks as needed. The intent is as follows:

- We propose to use the rig's steel pits for containing and maintaining the drilling fluids.
- We propose to remove cuttings and drilled solids from the mud by using solids control equipment and to contain such cuttings and drilled solids on location in haul-off bins.
- We propose that any excess water that may need to be stored on location will be stored in a fresh water pond.

The closed loop system components will be inspected daily by each tour and any needed repairs will be made immediately. Any leak in the system will be repaired immediately, and any spilled liquids and / or solids will be cleaned immediately, and the area where any such spill occurred will be remediated immediately.

- 2 Cuttings and solids will be removed from location in haul-off bins by an authorized contractor and disposed of at an authorized facility. For this well, we propose the following disposal facility:

Controlled Recovery Inc,
4507 West Carlsbad Hwy, Hobbs, NM 88240,
P.O. Box 388 Hobbs, New Mexico 88241
Toll Free Phone: 877.505 4274, Local Phone Number: 432-638-4076

The physical address for the plant where the disposal facility is located is Highway 62/180 at mile marker 66 (33 miles East of Hobbs, NM and 32 miles West of Carlsbad, NM)

The Permit Number for CRI is R9166

A photograph showing the type of haul-off bins that will be used is attached.

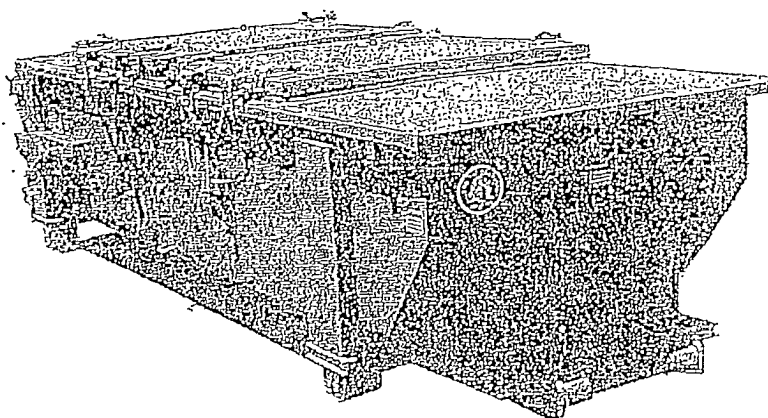
3. Mud will be transported by vacuum truck and disposed of at Controlled Recovery Inc at the facility described above.
- 4 Fresh Water and Brine will be hauled off by vacuum truck and disposed of at an authorized salt water disposal well. We propose the following for disposal of fresh water and brine as needed:
 - Nabors Well Services Company, 3221 NW County Rd, Hobbs, NM 88240, PO 5208 Hobbs, NM, 88241, Permit SWD 092 (Well Location Section 3, T19S R37E)
 - Basic Energy Services, PO Box 1869 Eunice, NM 88231 Phone Number 575 394 2545, Facility located at Hwy 18, Mile Marker 19, Eunice, NM.

Luis Serrano Drilling Engineer
ConocoPhillips Company, 600 North Dairy Ashford, Room #2WL-13016, Houston, TX 77079-1175
Office: 832-486-2346

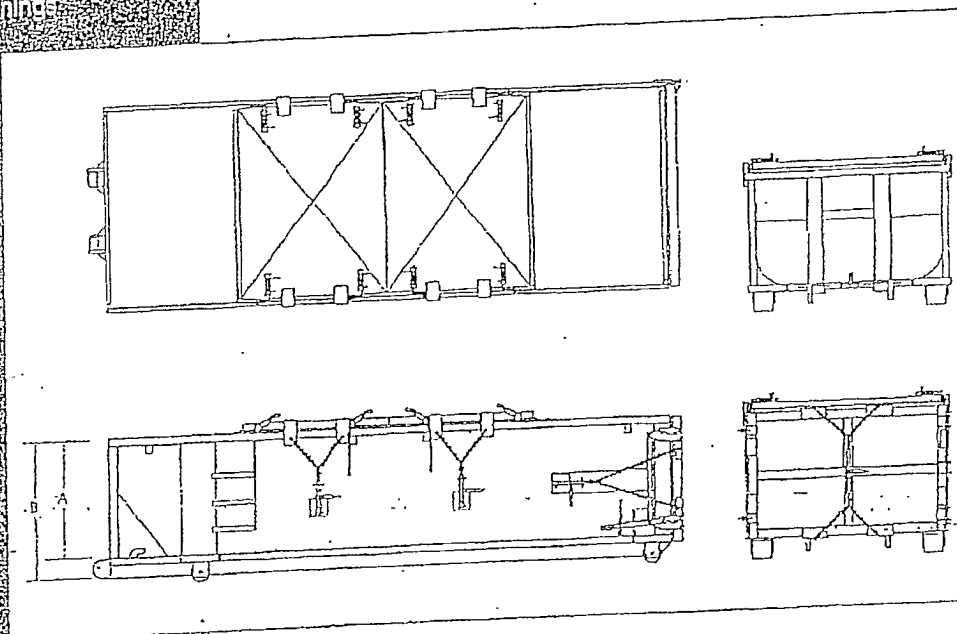
SPECIFICATIONS

FLOOR: 3/16 PL one piece
 CROSS MEMBER: 2x4 1/2 channel 16 on center
 WALLS: 3/16 PL cold rolled with tubing top inside liner hook
 DOOR: 3/16 PL with tubing frame
 FRONT: 3/16 PL slant formed
 PICK UP: Standard cable with 2x6 3/4 rails at seal at each cross member
 WHEELS: 6 DIA x 8 long with grease fittings
 DOOR LATCH: 2 independent ratchet binders with chains vertical second latch
 GASKETS: Extruded rubber seal with metal retainers
 WELDS: All welds continuous except sub structure cross members
 FINISH: Coated inside and out with electrol metal 1st in bluing acrylic enamel color coat
 HYDRO TESTING: Full capacity static test
 DIMENSIONS: 22' 11" long (21' 8" inside) 90" wide (88" inside) see drawing for height
 OPTIONS: Steel oil blast and special paint Amalgam Hal and Dingo pickup
 ROOF: 3/16 PL roof panels with tubing and channel support frame
 LIPS: 2x38x90 metal rolling lids spring loaded self raising
 ROLLERS: 1/4 V groove rollers with delrin bearings and grease fittings
 OPENING: (2) 60" x 82" openings with 3" divider centered on container
 LATCH: (2) independent ratchet binders with chains per lid
 GASKETS: Extruded rubber seal with metal retainers

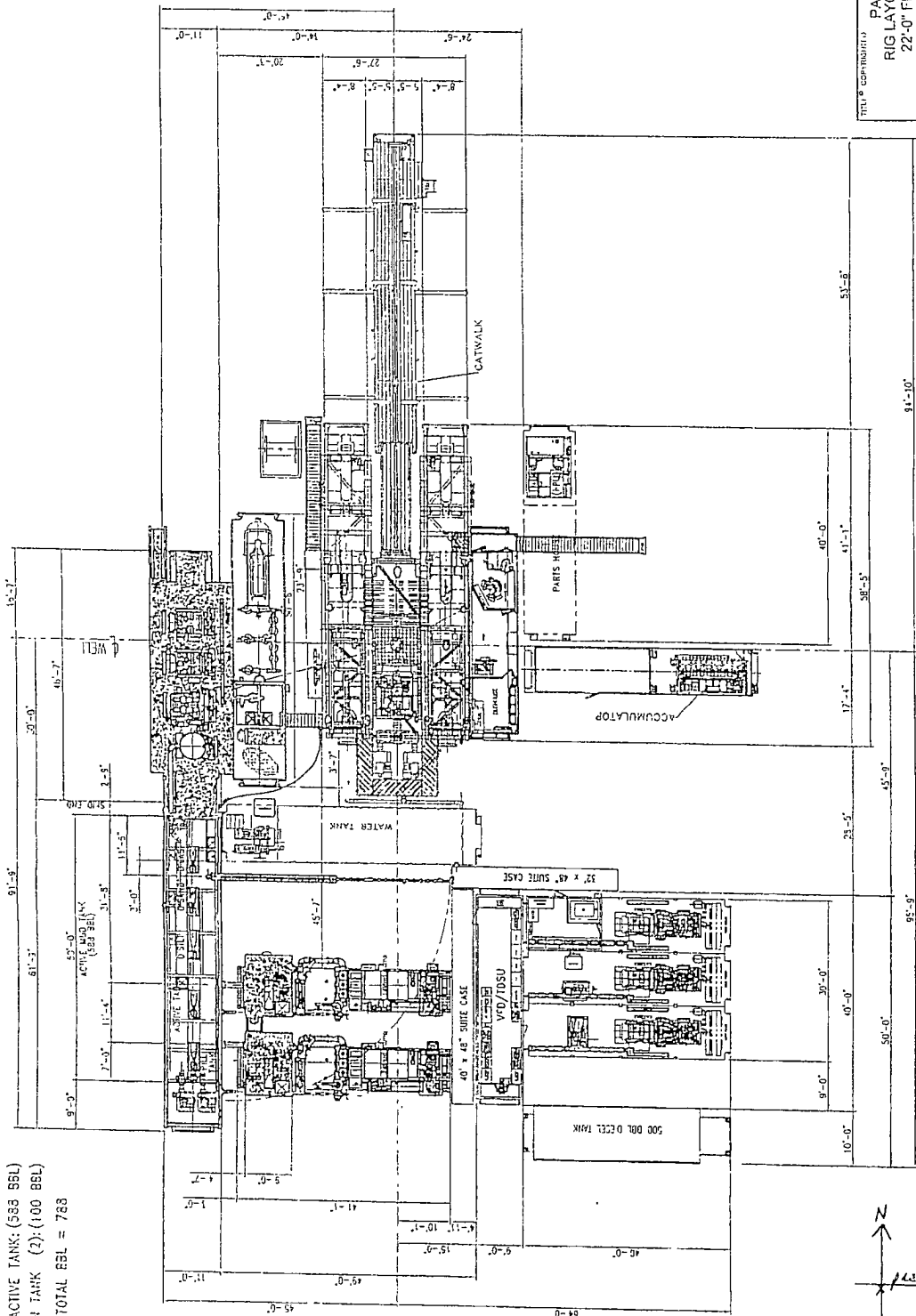
Heavy Duty Split Metal Rolling Lid



CONT.	A	B
20 YD	41	53
25 YD	53	65
30 YD	65	77



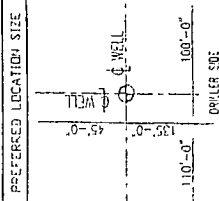
ACTIVE TANK: (533 BSL)
 SUCTION TANK (2): (100 BSL)
 TOTAL BSL = 733



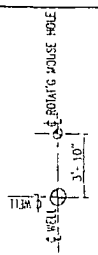
← 375' →

← 450' →

Access
 Road



RATHOLE/HOUSEHOLE



DRILLER SIDE

PAGE 750 M-SERIES RIGS
 RIG LAYOUT (SINGLE WELL DRILLING)
 22'-0" FLOOR / 17'-0" CLEAR HEIGHT

THIS DRAWING SHOWS THE SCALE ONLY WHEN PRINTED ON THE BLUE PAPER	
NABORS	
DATE	08/08/2005
BY	APP
REPT TO DE	EES
REVISION	DATE
0	UPDATED FOR NEW EQUIPMENT
1	REVISION
2	REVISION
3	REVISION
4	REVISION
5	REVISION
6	REVISION
7	REVISION
8	REVISION
9	REVISION
10	REVISION
11	REVISION
12	REVISION
13	REVISION
14	REVISION
15	REVISION
16	REVISION
17	REVISION
18	REVISION
19	REVISION
20	REVISION
21	REVISION
22	REVISION
23	REVISION
24	REVISION
25	REVISION
26	REVISION
27	REVISION
28	REVISION
29	REVISION
30	REVISION
31	REVISION
32	REVISION
33	REVISION
34	REVISION
35	REVISION
36	REVISION
37	REVISION
38	REVISION
39	REVISION
40	REVISION
41	REVISION
42	REVISION
43	REVISION
44	REVISION
45	REVISION
46	REVISION
47	REVISION
48	REVISION
49	REVISION
50	REVISION
51	REVISION
52	REVISION
53	REVISION
54	REVISION
55	REVISION
56	REVISION
57	REVISION
58	REVISION
59	REVISION
60	REVISION
61	REVISION
62	REVISION
63	REVISION
64	REVISION
65	REVISION
66	REVISION
67	REVISION
68	REVISION
69	REVISION
70	REVISION
71	REVISION
72	REVISION
73	REVISION
74	REVISION
75	REVISION
76	REVISION
77	REVISION
78	REVISION
79	REVISION
80	REVISION
81	REVISION
82	REVISION
83	REVISION
84	REVISION
85	REVISION
86	REVISION
87	REVISION
88	REVISION
89	REVISION
90	REVISION
91	REVISION
92	REVISION
93	REVISION
94	REVISION
95	REVISION
96	REVISION
97	REVISION
98	REVISION
99	REVISION
100	REVISION