

HOBBS OCD

## DISTRICT I

1625 N. French Dr., Hobbs, NM 88240

## DISTRICT II

1301 W. Grand Avenue, Artesia, NM 88210

## DISTRICT III

1000 Rio Brazos Rd., Aztec, NM 87410

## DISTRICT IV

1220 S. St. Francis Dr., Santa Fe, NM 87505

DEC 12 2011

State of New Mexico  
Energy, Minerals and Natural Resources Department

Form C-102

Revised July 16, 2010

Submit one copy to appropriate  
District Office

RECEIVED

## OIL CONSERVATION DIVISION

1220 South St. Francis Dr.  
Santa Fe, New Mexico 87505

## WELL LOCATION AND ACREAGE DEDICATION PLAT

☐ AMENDED REPORT

API Number <b>30-02540363</b>	Pool Code <b>22900</b>	Pool Name <b>Eunice; Bli-TU-DR, North</b>
Property Code <b>37346</b>	Property Name <b>WEST BLINEBRY DRINKARD UNIT</b>	
OGRID No. <b>873</b>	Operator Name <b>APACHE CORPORATION</b>	Well Number <b>111</b>
		Elevation <b>3464'</b>

## Surface Location

UL or lot No.	Section	Township	Range	Lot Idn	Feet from the	North/South line	Feet from the	East/West line	County
H	9	21 S	37 E		1600	NORTH	330	EAST	LEA

## Bottom Hole Location If Different From Surface

UL or lot No.	Section	Township	Range	Lot Idn	Feet from the	North/South line	Feet from the	East/West line	County
A	9	21 S	37 E		1310	NORTH	330	EAST	LEA

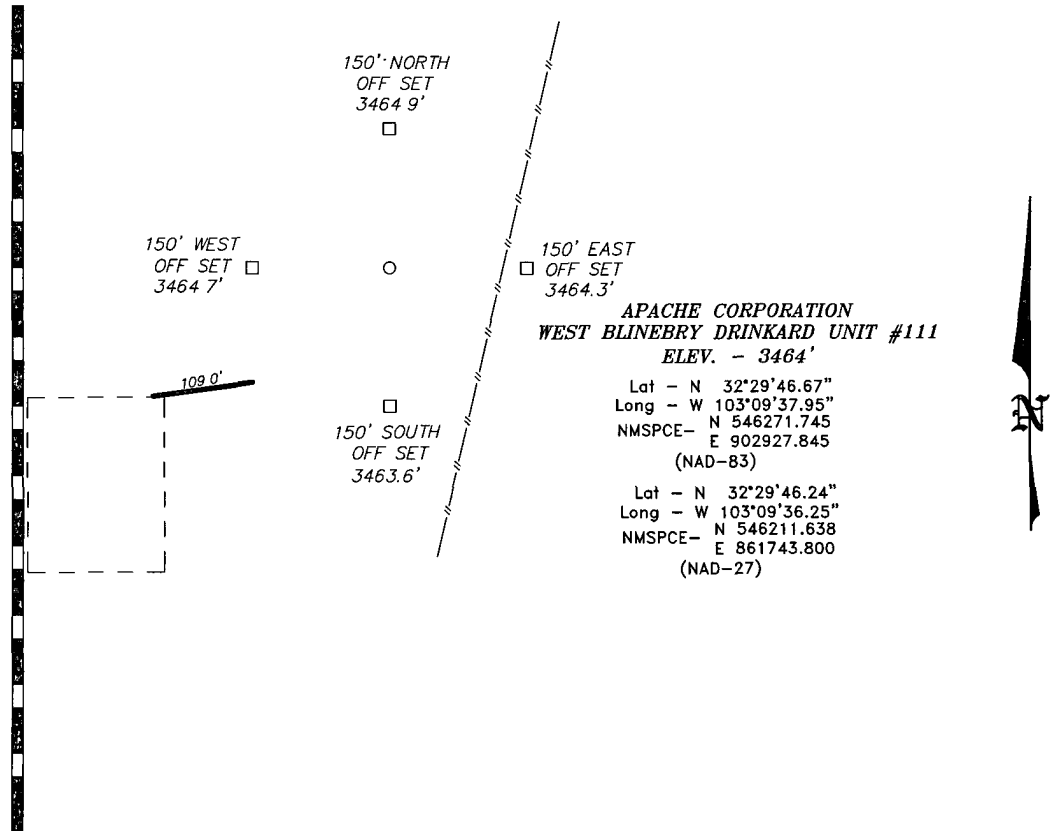
Dedicated Acres	Joint or Infill	Consolidation Code	Order No.
<b>80</b>			

NO ALLOWABLE WILL BE ASSIGNED TO THIS COMPLETION UNTIL ALL INTERESTS HAVE BEEN CONSOLIDATED  
OR A NON-STANDARD UNIT HAS BEEN APPROVED BY THE DIVISION

<p><b>32.496947</b> <b>103.160072</b></p> <p><b>32.496178</b> <b>103.160069</b></p>	<p><b>PROPOSED BOTTOM HOLE LOCATION</b> Lat - N 32°29'49.53" Long - W 103°09'37.95" NMSPC- N 546561.673 E 902924.449 (NAD-83)</p> <p><b>PROPOSED BOTTOM HOLE LOCATION</b> Lat - N 32°29'49.01" Long - W 103°09'36.26" NMSPC- N 546501.560 E 861740.412 (NAD-27)</p> <p><b>SURFACE LOCATION</b> Lat - N 32°29'46.67" Long - W 103°09'37.95" NMSPC- N 546271.745 E 902927.845 (NAD-83)</p> <p><b>SURFACE LOCATION</b> Lat - N 32°29'46.24" Long - W 103°09'36.25" NMSPC- N 546211.638 E 861743.800 (NAD-27)</p>		<p><b>OPERATOR CERTIFICATION</b> I hereby certify that the information contained herein is true and complete to the best of my knowledge and belief, and that this organization either owns a working interest or unleased mineral interest in the land including the proposed bottom hole location or has a right to drill this well at this location pursuant to a contract with an owner of such a mineral or working interest, or to a voluntary pooling agreement or a compulsory pooling order heretofore entered by the division.</p> <p><i>Susan Blakemore</i> 12/8/11 Signature Date Susan Blakemore Printed Name susan.blakemore@apachecorp.com Email Address</p>
	<p><b>SURVEYOR CERTIFICATION</b> I hereby certify that the well location shown on this plat was plotted from field notes of actual surveys made by me or under my supervision, and that the same is true and correct to the best of my belief</p> <p>OCT 26 2011 NEW MEXICO Date Surveyed Signature &amp; Seal of Professional Surveyor 7977 Certificate No. Gary L. Jones 7977 BASIN SURVEYS 25531</p>		

DEC 12 2011

SECTION 9, TOWNSHIP 21 SOUTH, RANGE 37 EAST, N.M.P.M.,  
LEA COUNTY, NEW MEXICO.



### Directions to Location

FROM MILE MARKER 4 OF HWY 207, GO SOUTHWEST  
0.5 MILES TO LEASE ROAD, ON LEASE ROAD GO  
WEST 0.1 MILES THENCE NORTH 0.1 MILES TO WELL  
PAD AND PROPOSED LEASE ROAD

200 0 200 400 FEET

SCALE: 1" = 200'

**APACHE CORPORATION**

REF: WEST BLINEBRY DRINKARD UNIT #111 / WELL PAD TOPO

THE WEST BLINEBRY DRINKARD UNIT #111 LOCATED 1600'

FROM THE NORTH LINE AND 330' FROM THE EAST LINE OF

SECTION 9, TOWNSHIP 21 SOUTH, RANGE 37 EAST,

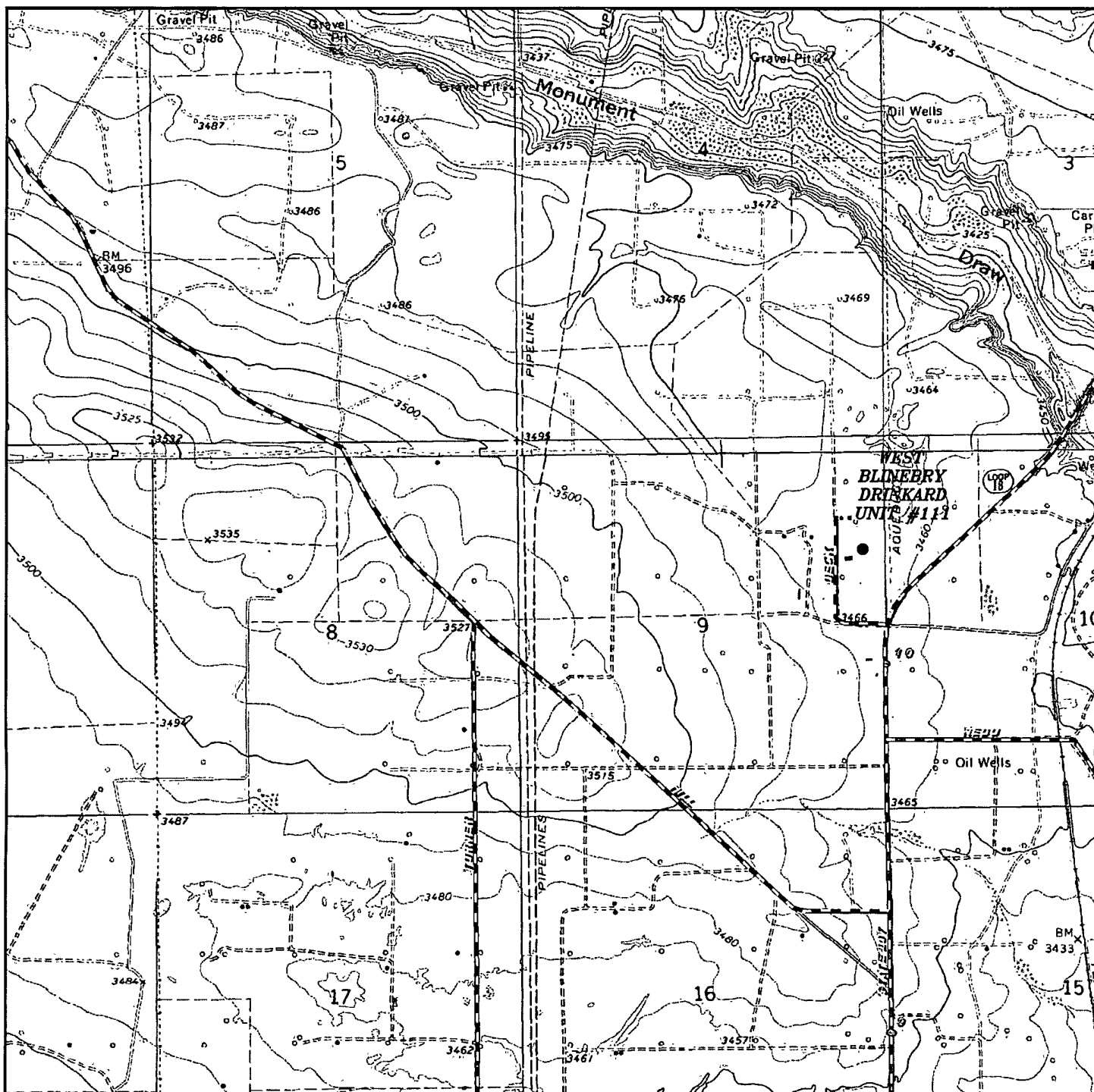
N.M.P.M., LEA COUNTY, NEW MEXICO.

**BASIN SURVEYS** P.O. BOX 1786—HOBBS, NEW MEXICO

W.O. Number. 25531	Drawn By. J. SMALL
--------------------	--------------------

Date: 10-25-2011	Disk: JMS 25531
------------------	-----------------

Survey Date: 10-20-2011	Sheet 1 of 1 Sheets
-------------------------	---------------------



# **WEST BLINEBRY DRINKARD UNIT #111**

Located 1600' FNL and 330' FEL

Section 9, Township 21 South, Range 37 East,  
N.M.P.M., Lea County, New Mexico.

**basin**  
**surveys**  
focused on excellence  
in the oilfield

P.O. Box 1786  
1120 N. West County Rd.  
Hobbs, New Mexico 88241  
(575) 393-7316 - Office  
(575) 392-2206 - Fax  
basinsurveys.com

W.O. Number: JMS 25531

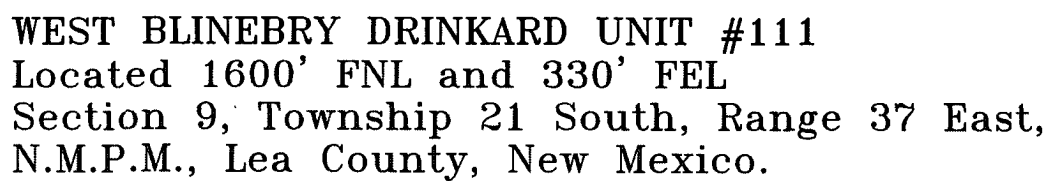
Survey Date: 10-20-2011

Scale: 1" = 2000'

Date: 10-25-2011

**APACHE**  
**CORPORATION**





APACHE  
CORPORATION