

District I
1625 N. French Dr., Hobbs, NM 88240
District II
1301 W. Grand Avenue, Artesio, NM 88210
District III
1000 Rio Brazos Rd., Aztec, NM 87410
District IV
1220 S. St. Francis Dr., Santa Fe, NM 87505

State of New Mexico
Energy, Minerals & Natural Resources Department
OIL CONSERVATION DIVISION
1220 South St. Francis
Santa Fe, NM 87505

Form C-102
Revised October 12, 2005
Submit to Appropriate District Office
State Lease- 4 Copies
Fee Lease- 3 Copies
☐ AMENDED REPORT

WELL LOCATION AND ACREAGE DEDICATION PLAT

API Number 30-025-11133	Pool Code 33820	Pool Name JALMAT:TAN-YATES-7 RVRS (OIL)
Property Code 306443	Property Name COOPER JAL UNIT	Well Number 109
OGRID No 263848	Operator Name RESACA OPERATING CO.	Elevation 3304.9'

Surface Location

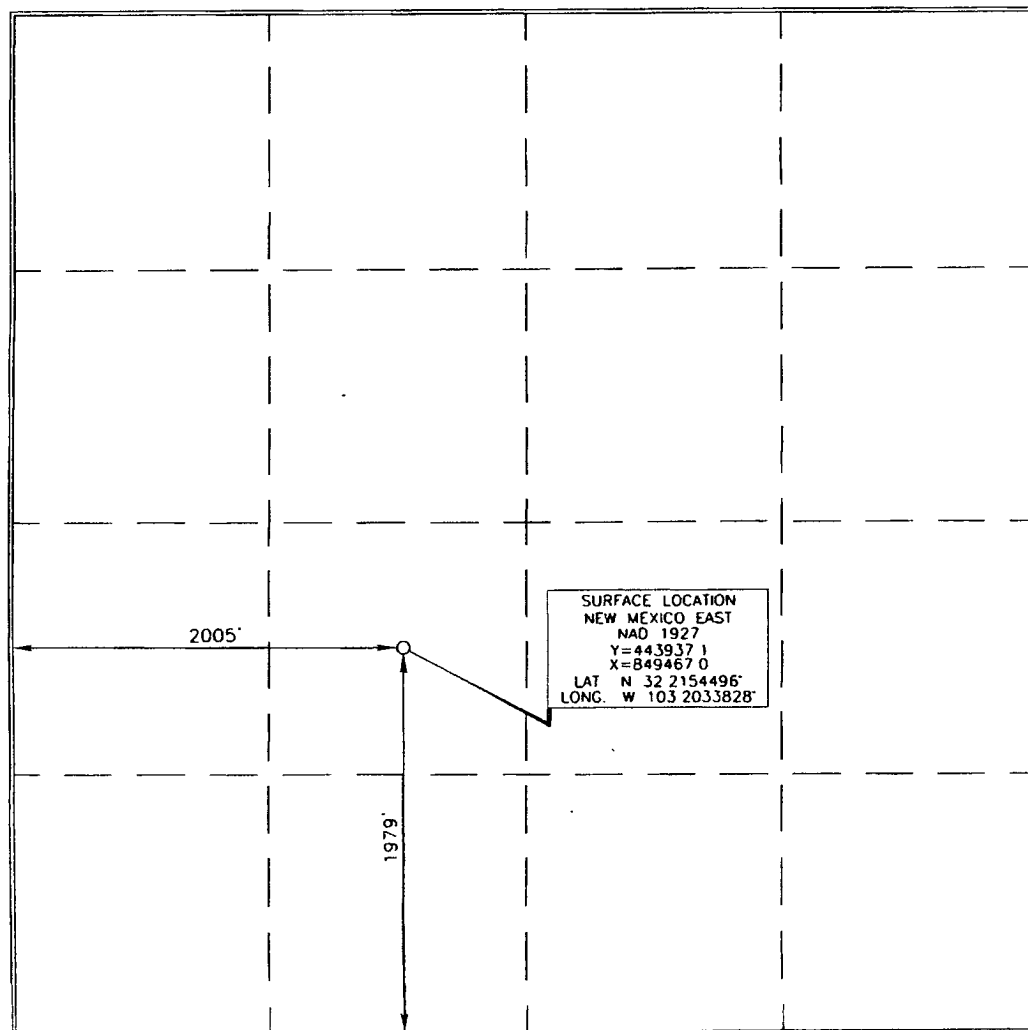
UL or lot no	Section	Township	Range	Lot Idn	Feet from the	North/South line	Feet from the	East/West line	County
K	18	24 SOUTH	37 EAST, N.M.P.M.		1979'	SOUTH	2005'	WEST	LEA

Bottom Hole Location If Different From Surface

UL or lot no	Section	Township	Range	Lot Idn	Feet from the	North/South line	Feet from the	East/West line	County

Dedicated Acres	Joint or Infill	Consolidation Code	Order No

No allowable will be assigned to this completion until all interests have been consolidated or a non-standard unit has been approved by the division.
N/A (Water Injection Well)



OPERATOR CERTIFICATION

I hereby certify that the information contained herein is true and complete to the best of my knowledge and belief, and that this organization either owns a working interest or unleased mineral interest in the land including the proposed bottom hole location or has a right to drill this well at this location pursuant to a contract with an owner of such a mineral or working interest, or to a voluntary pooling agreement or a compulsory pooling order heretofore entered by the division.

Brian Wood 5-30-11
Signature Date

BRIAN WOOD

Printed Name

SURVEYOR CERTIFICATION

I hereby certify that the well location shown on this plat was plotted from field notes or actual surveys made by me or under my supervision, and that the same is true and correct to the best of my belief.

15079
APRIL 11, 2011
Date of Survey

Terry J. Paul 4/25/2011
Signature and Seal of Professional Surveyor
Certificate Number 15079

WO# 110411WL-C (KA)

DEC 13 2011