

**District I**

1625 N. French Dr., Hobbs, NM 88240

**District II**

1301 W. Grand Avenue, Artesia, NM 88210

**District III**

1000 Rio Brazos Rd., Aztec, NM 87410

**District IV**

1220 S. St. Francis Dr., Santa Fe, NM 87505

State of New Mexico  
Energy, Minerals & Natural Resources Department  
**OIL CONSERVATION DIVISION**  
1220 South St. Francis Dr.  
Santa Fe, NM 87505

Form C-102

Revised October 15, 2009

Submit one copy to appropriate

District Office

☐ AMENDED REPORT**WELL LOCATION AND ACREAGE DEDICATION PLAT**

<sup>1</sup> API Number <b>30-025-40388</b>		<sup>2</sup> Pool Code <b>55610</b>		<sup>3</sup> Pool Name <b>Scharb; Bone Spring</b>	
<sup>4</sup> Property Code <b>34956</b>		<sup>5</sup> Property Name <b>KING COBRA "2" STATE</b>			<sup>6</sup> Well Number <b>1H</b>
<sup>7</sup> OGRID No. <b>229137</b>		<sup>8</sup> Operator Name <b>COG OPERATING, LLC.</b>			<sup>9</sup> Elevation <b>3969.3</b>

<sup>10</sup> Surface Location

UL or lot no.	Section	Township	Range	Lot Idn	Feet from the	North/South line	Feet from the	East/West line	County
<b>A</b>	<b>2</b>	<b>19 S</b>	<b>34 E</b>		<b>460</b>	<b>NORTH</b>	<b>460</b>	<b>EAST</b>	<b>LEA</b>

<sup>11</sup> Bottom Hole Location If Different From Surface

UL or lot no.	Section	Township	Range	Lot Idn	Feet from the	North/South line	Feet from the	East/West line	County
<b>P</b>	<b>2</b>	<b>19 S</b>	<b>34 E</b>		<b>460</b>	<b>SOUTH</b>	<b>510</b>	<b>EAST</b>	<b>LEA</b>

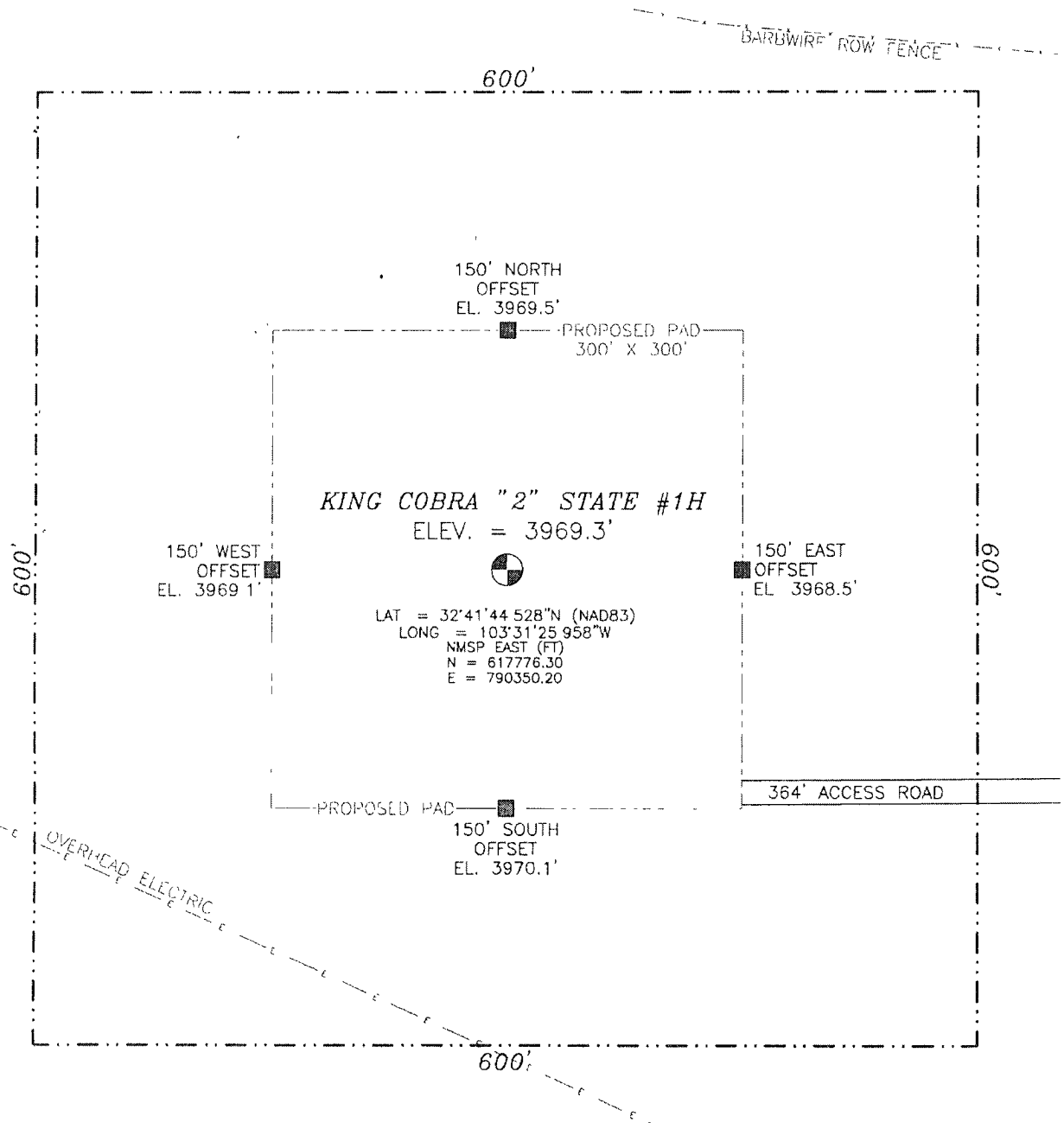
<sup>12</sup> Dedicated Acres	<sup>13</sup> Joint or Infill	<sup>14</sup> Consolidation Code	<sup>15</sup> Order No
<b>160</b>			

No allowable will be assigned to this completion until all interests have been consolidated or a non-standard unit has been approved by the division.

<p>NW CORNER SEC. 2 LAT. = 32°41'49.048"N LONG. = 103°32'22.366"W NMSP EAST (FT) N = 618196.80 E = 785525.43</p>	<p><b>KING COBRA "2" STATE #1H</b> ELEV = 3969.3' LAT. = 32°41'44.528"N (NAD83) LONG. = 103°31'25.958"W NMSP EAST (FT) N = 617776.30 E = 790350.20</p>	<p><b>SURFACE LOCATION</b> 460' NE CORNER SEC. 2 LAT. = 32°41'49.083"N LONG. = 103°31'20.567"W NMSP EAST (FT) N = 618240.28 E = 790807.49</p>	<p><b>17 OPERATOR CERTIFICATION</b> I hereby certify that the information contained herein is true and complete to the best of my knowledge and belief, and that this organization either owns a working interest or unleased mineral interest in the land including the proposed bottom hole location or has a right to drill this well at this location pursuant to a contract with an owner of such a mineral or working interest, or to a voluntary pooling agreement or a compulsory pooling order heretofore entered by the division.</p> <p><i>Paul French</i> 1/9/12 Signature Date Printed Name</p>
<p>SW CORNER SEC. 2 LAT. = 32°40'55.457"N LONG. = 103°32'22.498"W NMSP EAST (FT) N = 612779.55 E = 785554.71</p>	<p><b>BOTTOM OF HOLE</b> LAT. = 32°41'00.131"N LONG. = 103°31'26.623"W NMSP EAST (FT) N = 613288.09 E = 790327.57</p>	<p><b>BOTTOM OF HOLE</b> 510' SE CORNER SEC. 2 LAT. = 32°40'55.593"N LONG. = 103°31'20.665"W NMSP EAST (FT) N = 612833.28 E = 790840.45</p>	<p><b>18 SURVEYOR CERTIFICATION</b> I hereby certify that the well location shown on this plat was plotted from field notes of actual surveys made by me or under my supervision, and that the same is true and correct to the best of my belief.</p> <p>JANUARY 11, 2012 Date of Survey <i>Paul French</i> Signature and Seal of Professional Surveyor Certificate Number PH-MON-P. JABANILCO, PLS 12797 SURVEY NO 769</p>

JAN 11 2012

SECTION 2, TOWNSHIP 19 SOUTH, RANGE 34 EAST, N.M.P.M.  
LEA COUNTY, STATE OF NEW MEXICO



0 10 50 100 200

SCALE 1" = 100'

DIRECTIONS TO LOCATION

FROM CR PEARL VALLEY AND STATE HWY. 529 GO WEST ON HWY 529 2.9 MILES TURN LEFT ON CALICHE ROAD ACROSS FROM VAN NOY RD. AND GO SOUTH ABOUT 600' AND LOCATION IS ON THE RIGHT (WEST) ABOUT 500'.

COG OPERATING, LLC

**KING COBRA "2" STATE #1H**

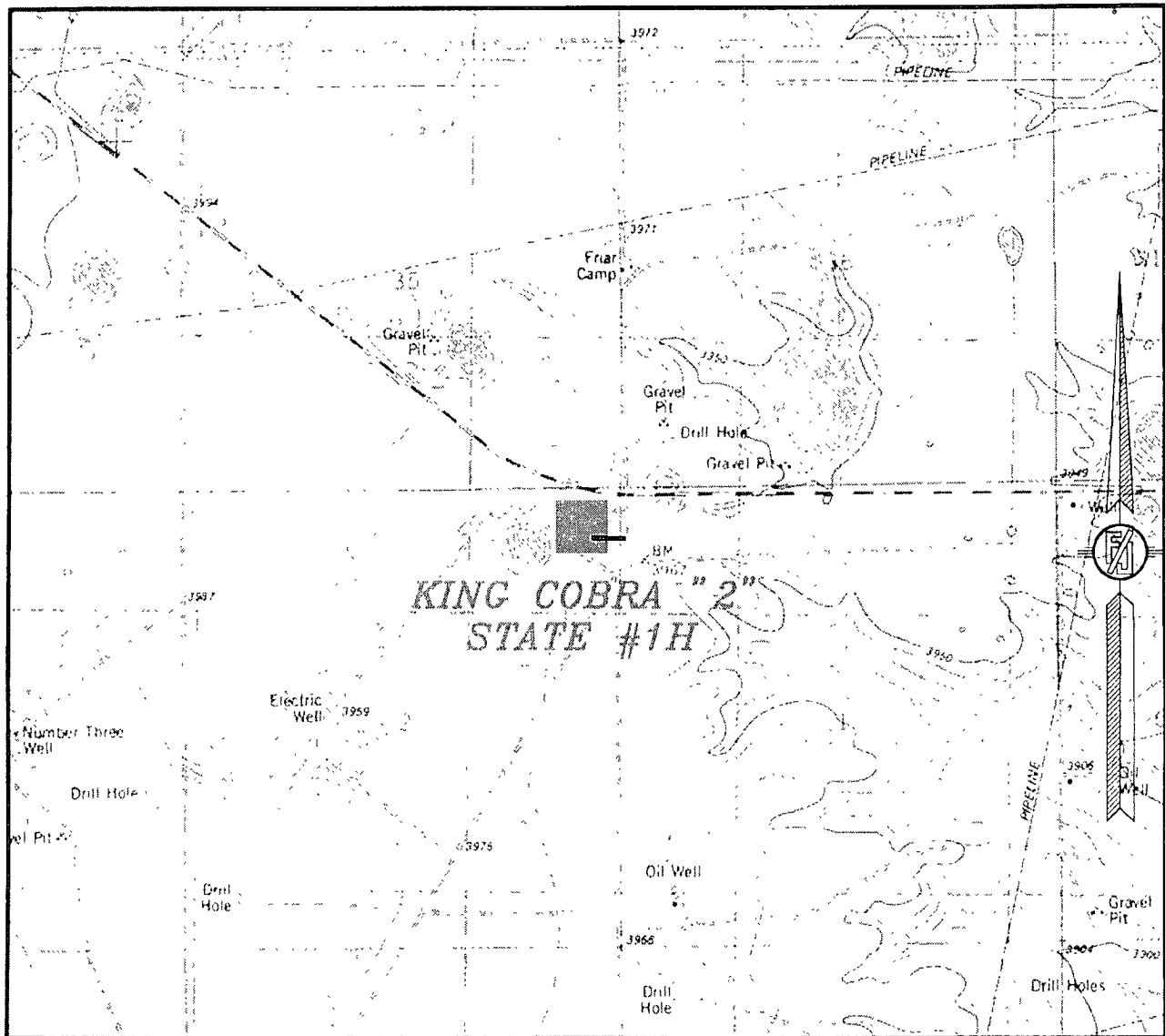
LOCATED 460 FT. FROM THE NORTH LINE  
AND 460 FT. FROM THE EAST LINE OF  
SECTION 2, TOWNSHIP 19 SOUTH,  
RANGE 34 EAST, N.M.P.M.  
LEA COUNTY, STATE OF NEW MEXICO

SURVEY NO. 769

NOVEMBER 11, 2011

MADRON SURVEYING, INC. 301 SOUTH CANAL (575) 234-3341 CARLSBAD, NEW MEXICO

SECTION 2, TOWNSHIP 19 SOUTH, RANGE 34 EAST, N.M.P.M.  
LEA COUNTY, STATE OF NEW MEXICO  
LOCATION VERIFICATION MAP



CONTOUR INTERVAL:  
IRON HOUSE WELL

NOT TO SCALE

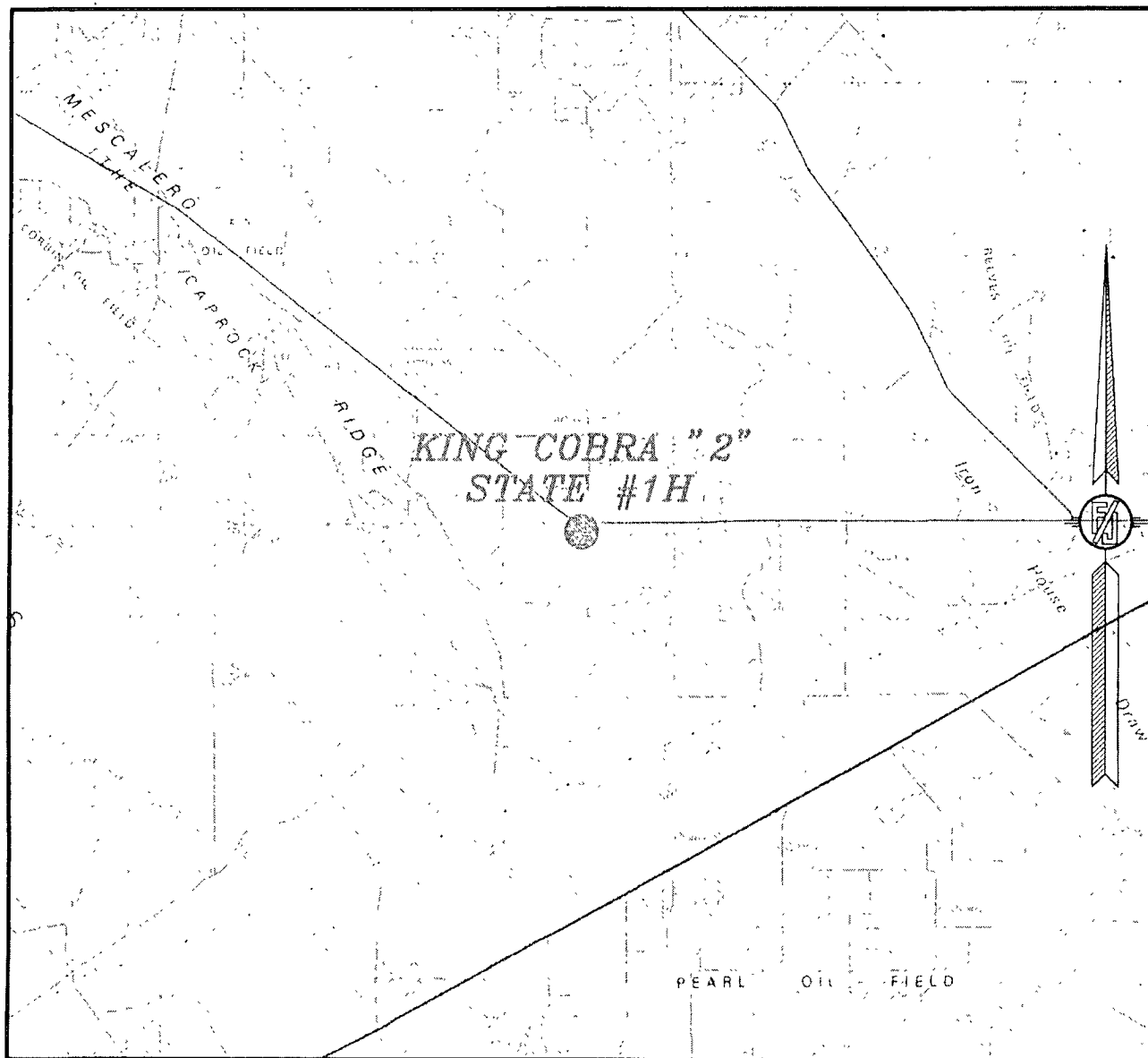
COG OPERATING, LLC  
**KING COBRA "2" STATE #1H**  
LOCATED 460 FT. FROM THE NORTH LINE  
AND 460 FT. FROM THE EAST LINE OF  
SECTION 2, TOWNSHIP 19 SOUTH,  
RANGE 34 EAST, N.M.P.M.  
LEA COUNTY, STATE OF NEW MEXICO

NOVEMBER 11, 2011

SURVEY NO. 769

MADRON SURVEYING, INC. 301 SOUTH CANAL (575) 234-3341 CARLSBAD, NEW MEXICO

SECTION 2, TOWNSHIP 19 SOUTH, RANGE 34 EAST, N.M.P.M.  
LEA COUNTY, STATE OF NEW MEXICO  
VICINITY MAP



NOT TO SCALE

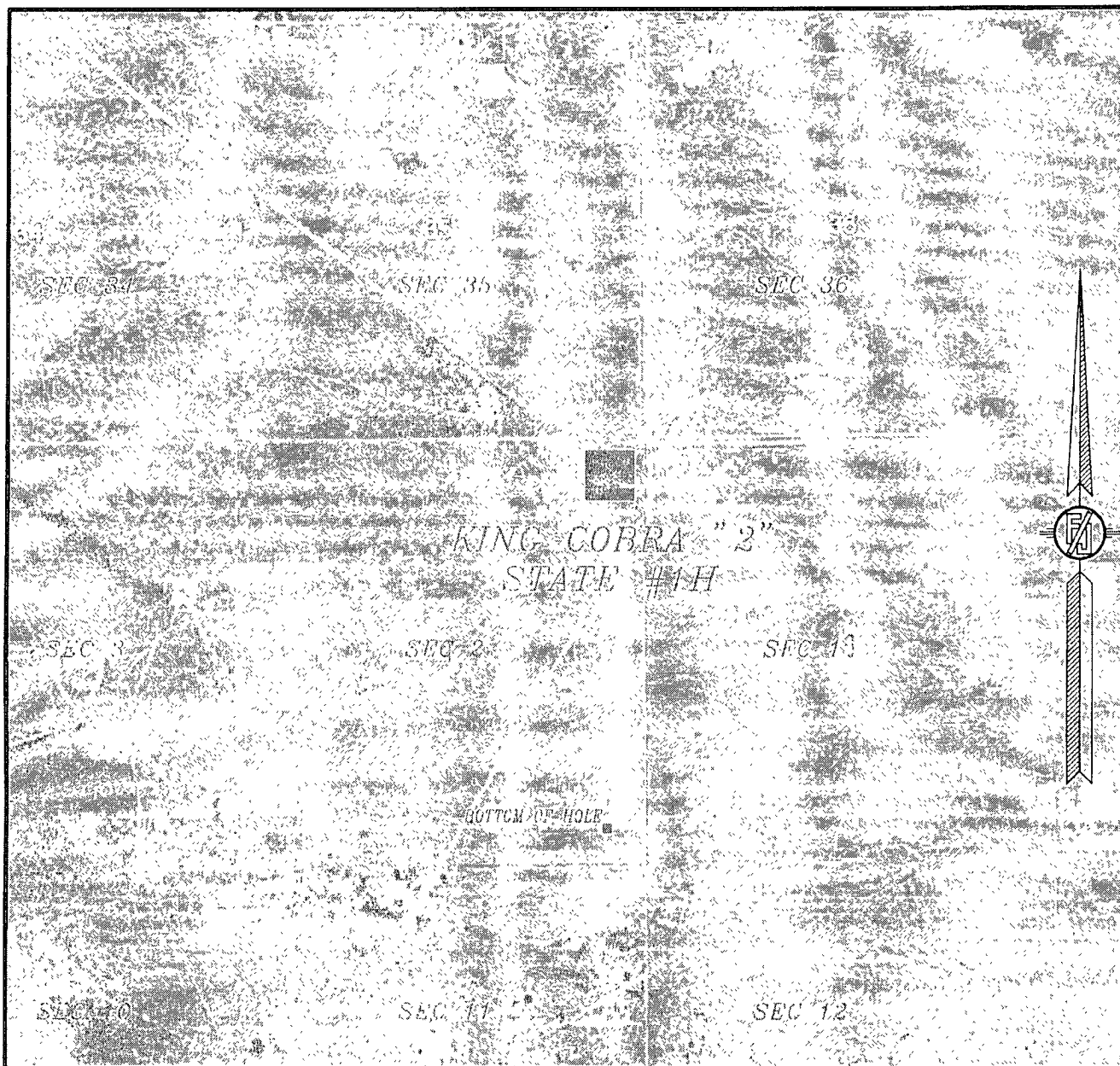
COG OPERATING, LLC  
**KING COBRA "2" STATE #1H**  
LOCATED 460 FT. FROM THE NORTH LINE  
AND 460 FT. FROM THE EAST LINE OF  
SECTION 2, TOWNSHIP 19 SOUTH,  
RANGE 34 EAST, N.M.P.M.  
LEA COUNTY, STATE OF NEW MEXICO

NOVEMBER 11, 2011

SURVEY NO. 769

MADRON SURVEYING, INC. 301 SOUTH CANAL (575) 234-3341 CARLSBAD, NEW MEXICO

SECTION 2, TOWNSHIP 19 SOUTH, RANGE 34 EAST, N.M.P.M.  
LEA COUNTY, STATE OF NEW MEXICO  
AERIAL PHOTO



NOT TO SCALE  
AERIAL PHOTO:  
GOOGLE EARTH  
JUNE, 2010

COG OPERATING, LLC  
**KING COBRA "2" STATE #1H**  
LOCATED 460 FT. FROM THE NORTH LINE  
AND 460 FT. FROM THE EAST LINE OF  
SECTION 2, TOWNSHIP 19 SOUTH,  
RANGE 34 EAST, N.M.P.M.  
LEA COUNTY, STATE OF NEW MEXICO

NOVEMBER 11, 2011

SURVEY NO. 769

MADRON SURVEYING, INC. 301 SOUTH CANAL (575) 234-3341 CARLSBAD, NEW MEXICO