

District I

1625 N. French Dr., Hobbs, NM 88240

District II

1301 W. Grand Avenue, Artesia, NM 88210

District III

1000 Rio Brazos Rd., Aztec, NM 87414

District IV

1220 S. St. Francis Dr., Santa Fe, NM 87505

State of New Mexico

Energy, Minerals & Natural Resources Department

OIL CONSERVATION DIVISION

1220 South St. Francis Dr.

Santa Fe, NM 87505

Form C-102

Revised October 15, 2009

Submit one copy to appropriate

District Office

☐ AMENDED REPORT

RECEIVED LOCATION AND ACREAGE DEDICATION PLAT

¹ API Number 30-025-40404	² Pool Code 55610	³ Pool Name Scharb Bone Spring
⁴ Property Code 39012	⁵ Property Name WILD COBRA 1 STATE	
⁶ OGRID No. 229137	⁸ Operator Name COG OPERATING, LLC.	⁷ Well Number 2H
		⁹ Elevation 3966.1

¹⁰ Surface Location

UL or lot no.	Section	Township	Range	Lot Idn	Feet from the	North/South line	Feet from the	East/West line	County
E	1	19 S	34 E		1815	NORTH	460	WEST	LEA

¹¹ Bottom Hole Location If Different From Surface

UL or lot no.	Section	Township	Range	Lot Idn	Feet from the	North/South line	Feet from the	East/West line	County
H	1	19 S	34 E		2180	NORTH	460	EAST	LEA

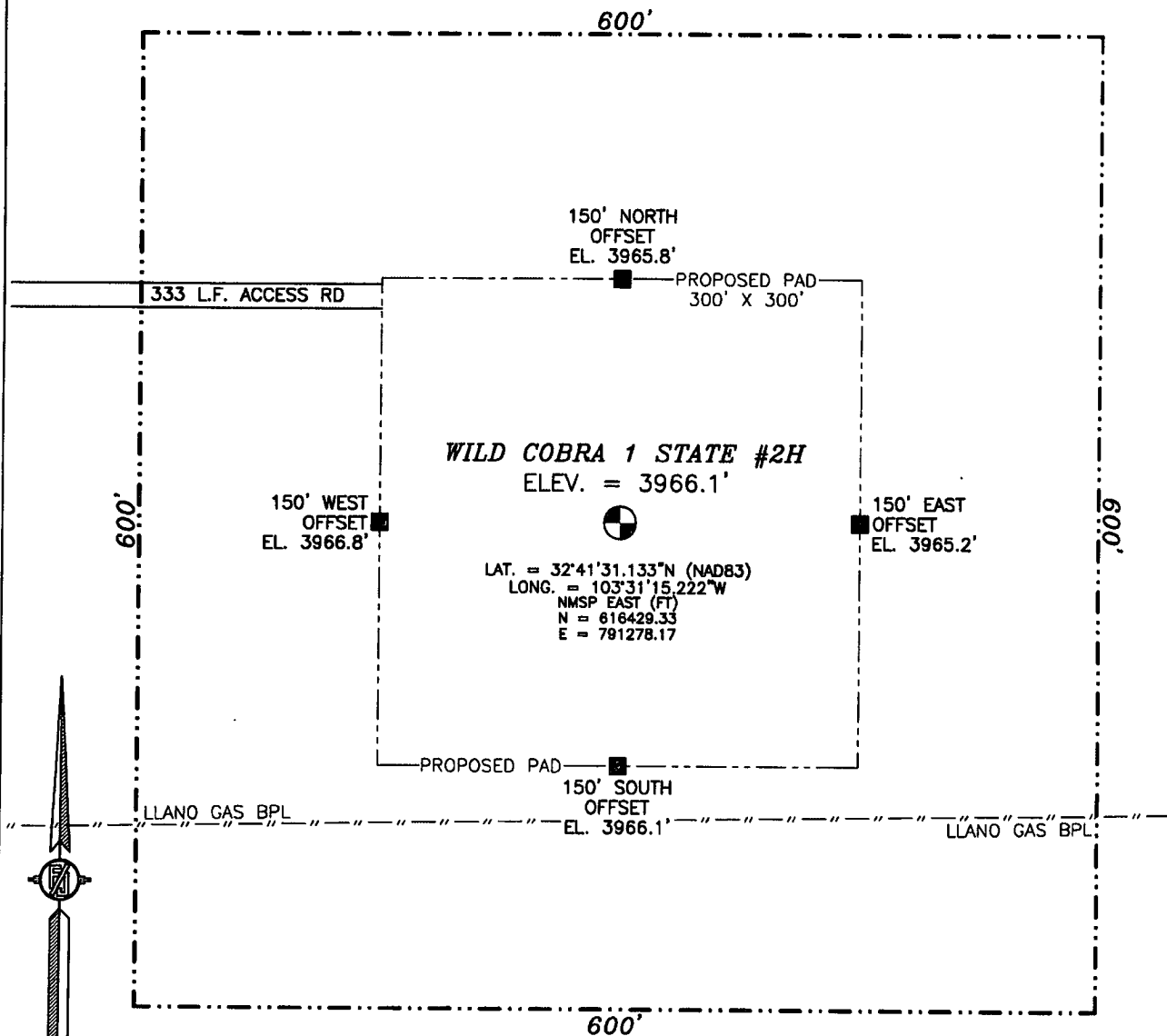
¹² Dedicated Acres	¹³ Joint or Infill	¹⁴ Consolidation Code	¹⁵ Order No.

No allowable will be assigned to this completion until all interests have been consolidated or a non-standard unit has been approved by the division.

<p>NW CORNER SEC. 1 LAT. = 32°41'49.083"N LONG. = 103°31'20.567"W NMSP EAST (FT) N = 618240.28 E = 790807.49</p> <p>SURFACE LOCATION 460'</p> <p>WILD COBRA 1 STATE #2H ELEV. = 3966.1' LAT. = 32°41'31.133"N (NAD83) LONG. = 103°31'15.222"W NMSP EAST (FT) N = 616429.23 E = 791278.17</p> <p>SW CORNER SEC. 1 LAT. = 32°40'55.593"N LONG. = 103°31'20.665"W NMSP EAST (FT) N = 612833.28 E = 790840.45</p>	<p>NE CORNER SEC. 1 LAT. = 32°41'49.141"N LONG. = 103°30'18.807"W NMSP EAST (FT) N = 618286.94 E = 796086.17</p> <p>BOTTOM OF HOLE 460'</p> <p>BOTTOM OF HOLE LAT. = 32°41'27.570"N LONG. = 103°30'24.185"W NMSP EAST (FT) N = 616102.92 E = 795643.49</p> <p>SE CORNER SEC. 1 LAT. = 32°40'55.728"N LONG. = 103°30'18.779"W NMSP EAST (FT) N = 612887.76 E = 796130.65</p>	<p>17 OPERATOR CERTIFICATION I hereby certify that the information contained herein is true and complete to the best of my knowledge and belief, and that this organization either owns a working interest or unleased mineral interest in the land including the proposed bottom hole location or has a right to drill this well at this location pursuant to a contract with an owner of such a mineral or working interest, or to a voluntary pooling agreement or a compulsory pooling order heretofore entered by the division.</p> <p>Signature: <i>Melanie Parker</i> Date: 1/12/12</p> <p>Printed Name: <i>Melanie J Parker</i></p> <p>18 SURVEYOR CERTIFICATION I hereby certify that the well location shown on this plat was plotted from field notes of actual surveys made by me or under my supervision, and that the same is true and correct to the best of my belief.</p> <p>JANUARY 4, 2012</p> <p>Date of Survey: <i>1/4/2012</i></p> <p>Signature and Seal of Professional Surveyor: <i>Samuel J. Jaramillo</i></p> <p>Certificate Number: FILIMON F. JARAMILLO, PLS 12797</p> <p>SURVEY NO. 764A</p>
---	---	---

JAN 23 2012

SECTION 1, TOWNSHIP 19 SOUTH, RANGE 34 EAST, N.M.P.M.
LEA COUNTY, STATE OF NEW MEXICO



010 50 100 200

SCALE 1" = 100'

DIRECTIONS TO LOCATION

FROM THE INTERSECTION OF HWY 529 AND VAN NOY LANE ABOUT 300 FT. EAST OF MILE MARKER 23 ON HWY 529, GO SOUTH ON 20FT CALICHE LEASE RD 0.15 MILES TAKE 2-TRACK SPUR ON LEFT (EAST) GO ON 2-TRACK ROAD 560 FT. SITE IS LEFT (EAST) ABOUT 350 FT.

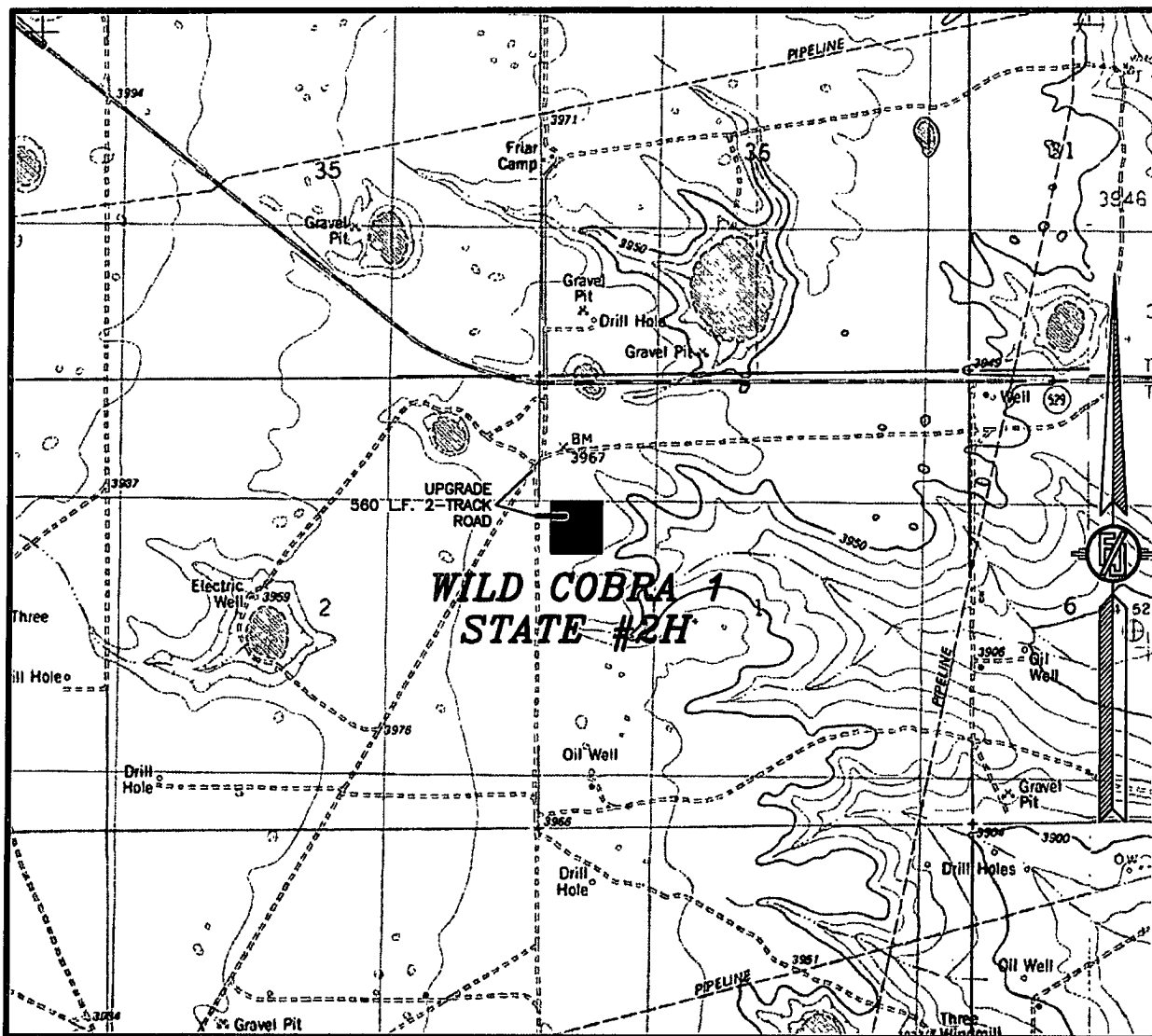
COG OPERATING, LLC
WILD COBRA 1 STATE #2H
LOCATED 1815 FT. FROM THE NORTH LINE
AND 460. FROM THE WEST LINE OF
SECTION 1, TOWNSHIP 19 SOUTH,
RANGE 34 EAST, N.M.P.M.
LEA COUNTY, STATE OF NEW MEXICO

SURVEY NO. 764A

JANUARY 4, 2011

MADRON SURVEYING, INC. 301 SOUTH CANAL (575) 234-3341 CARLSBAD, NEW MEXICO

SECTION 1, TOWNSHIP 19 SOUTH, RANGE 34 EAST, N.M.P.M.
LEA COUNTY, STATE OF NEW MEXICO
LOCATION VERIFICATION MAP



CONTOUR INTERVAL:
IRON HOUSE WELL

NOT TO SCALE

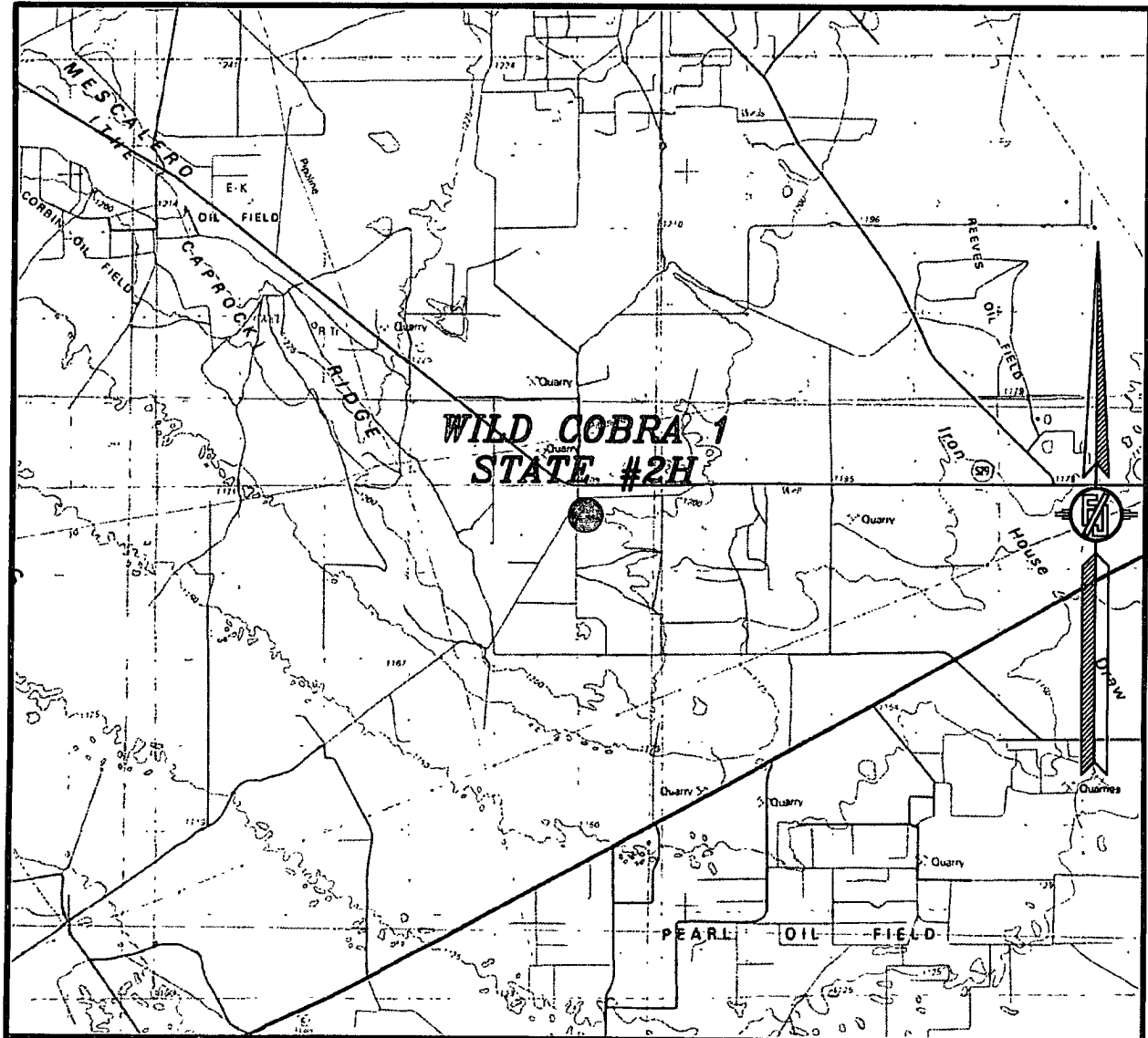
COG OPERATING, LLC
WILD COBRA 1 STATE #2H
LOCATED 1815 FT. FROM THE NORTH LINE
AND 460. FROM THE WEST LINE OF
SECTION 1, TOWNSHIP 19 SOUTH,
RANGE 34 EAST, N.M.P.M.
LEA COUNTY, STATE OF NEW MEXICO

JANUARY 4, 2011

SURVEY NO. 764A

MADRON SURVEYING, INC. 301 SOUTH CANAL CARLSBAD, NEW MEXICO
(575) 234-3341

SECTION 1, TOWNSHIP 19 SOUTH, RANGE 34 EAST, N.M.P.M.
LEA COUNTY, STATE OF NEW MEXICO
VICINITY MAP



NOT TO SCALE

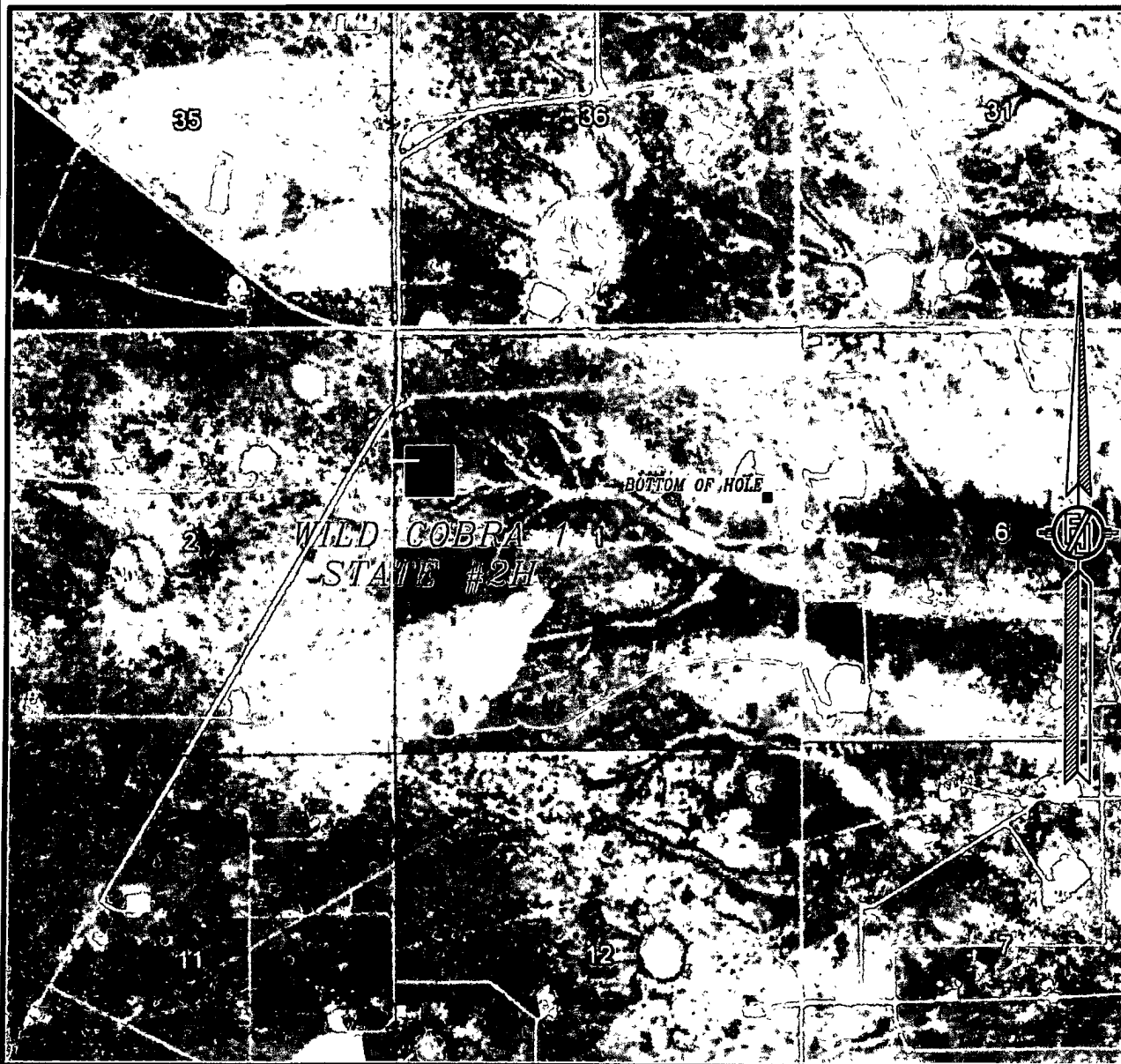
COG OPERATING, LLC
WILD COBRA 1 STATE #2H
LOCATED 1815 FT. FROM THE NORTH LINE
AND 460. FROM THE WEST LINE OF
SECTION 1, TOWNSHIP 19 SOUTH,
RANGE 34 EAST, N.M.P.M.
LEA COUNTY, STATE OF NEW MEXICO

JANUARY 4, 2011

SURVEY NO. 764A

MADRON SURVEYING, INC. 301 SOUTH CANAL CARLSBAD, NEW MEXICO
(575) 234-3341

SECTION 1, TOWNSHIP 19 SOUTH, RANGE 34 EAST, N.M.P.M.
LEA COUNTY, STATE OF NEW MEXICO
AERIAL PHOTO



NOT TO SCALE
AERIAL PHOTO:
GOOGLE EARTH
USDA - AUG, 2009

COG OPERATING, LLC
WILD COBRA 1 STATE #2H
LOCATED 1815 FT. FROM THE NORTH LINE
AND 460. FROM THE WEST LINE OF
SECTION 1, TOWNSHIP 19 SOUTH,
RANGE 34 EAST, N.M.P.M.
LEA COUNTY, STATE OF NEW MEXICO

JANUARY 4, 2011

SURVEY NO. 764A

MADRON SURVEYING, INC. 301 SOUTH CANAL CARLSBAD, NEW MEXICO
(575) 234-3341