

District I

1625 N. French Dr., Hobbs, NM 88240

District II

1301 W. Grand Avenue, Artesia, NM 88210

District III

1000 Rio Brazos Rd., Aztec, NM 87410

District IV

1220 S. St. Francis Dr., Santa Fe, NM 87505

State of New Mexico

Energy, Minerals & Natural Resources Department

OIL CONSERVATION DIVISION

1220 South St. Francis Dr.

Santa Fe, NM 87505

Form C-102

Revised October 15, 2009

Submit one copy to appropriate

District Office

☐ AMENDED REPORT

WELL LOCATION AND ACREAGE DEDICATION PLAT

¹ API Number 30-025-40405	² Pool Code 55610	³ Pool Name Scharb Bone Spring
⁴ Property Code 38904	⁵ Property Name PLAYA 2 STATE	⁶ Well Number 1H
⁷ OGRID No. 6137	⁸ Operator Name DEVON ENERGY PRODUCTION COMPANY, L.P.	⁹ Elevation 3979.7

¹⁰ Surface Location

UL or lot no.	Section	Township	Range	Lot Idn	Feet from the	North/South line	Feet from the	East/West line	County
N	2	19 S	34 E		330	SOUTH	2190	WEST	LEA

¹¹ Bottom Hole Location If Different From Surface

UL or lot no.	Section	Township	Range	Lot Idn	Feet from the	North/South line	Feet from the	East/West line	County
C	2	19 S	34 E		330	NORTH	2190	WEST	LEA

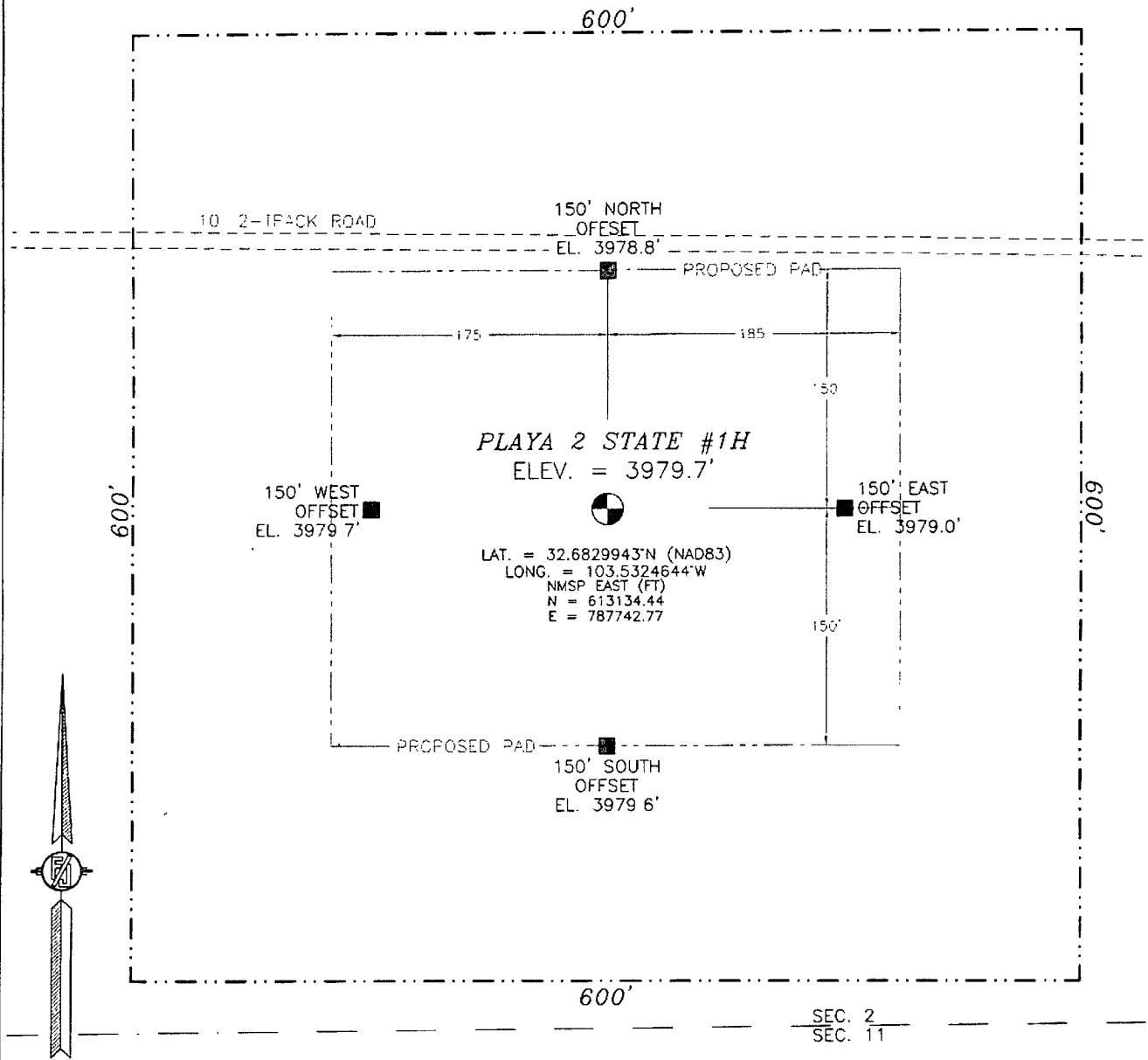
¹² Dedicated Acres 164.02	¹³ Joint or Infill	¹⁴ Consolidation Code	¹⁵ Order No.
--	-------------------------------	----------------------------------	-------------------------

No allowable will be assigned to this completion until all interests have been consolidated or a non-standard unit has been approved by the division.

	<p>NE CORNER SEC. 2 LAT. = 32.6969575°N LONG. = 103.5223797°W NMSP EAST (FT) N = 618241.79 E = 790806.78</p> <p>RECEIVED NOV -7 2011 NMOCD ARTESIA</p>	<p>¹⁷ OPERATOR CERTIFICATION I hereby certify that the information contained herein is true and complete to the best of my knowledge and belief, and that this organization either owns a working interest or released mineral interest in the land including the proposed bottom hole location or has a right to drill this well at this location pursuant to a contract with an owner of such a mineral or working interest, or to a voluntary pooling agreement or a compulsory pooling order heretofore entered by the division.</p> <p>Signature: <i>Judy A. Barnett</i> Date: 11/09/11 Printed Name: Judy A. Barnett Regulatory Specialist</p> <p>¹⁸ SURVEYOR CERTIFICATION I hereby certify that the well location shown on this plat was plotted from field notes of actual surveys made by me or under my supervision, and that the same is true and correct to the best of my belief.</p> <p>Date of Survey: OCTOBER 1, 2011 Signature and Seal of Professional Surveyor: <i>FILMION F. JARVIS</i> Certificate Number: FILMION F. JARVIS, PLS 12797 REGISTERED LAND SURVEYOR NO. 564</p>
--	--	--

JAN 23 2012

SECTION 2, TOWNSHIP 19 SOUTH, RANGE 34 EAST, N.M.P.M.
LEA COUNTY, STATE OF NEW MEXICO



010 50 100 200

SCALE 1" = 100'

DIRECTIONS TO LOCATION

FROM MILE MARKER 23 ON STATE ROAD 529 GO EAST ABOUT 200 FT
ON SR 529 TO TURN SOUTH ON CALACHE ROAD ACROSS FROM VAN
NOY ROAD GO SOUTH ON CALICHE ROAD 1 MILE TO A 2 TRACK
ROAD ON RIGHT (WEST) GO WEST ON 2 TRACK ROAD 0.13 MILES
SITE IS 150 FT ON LEFT (SOUTH)

DEVON ENERGY PRODUCTION COMPANY, L.P.
PLAYA 2 STATE #1H

LOCATED 330 FT. FROM THE SOUTH LINE
AND 2190 FT. FROM THE WEST LINE OF
SECTION 2, TOWNSHIP 19 SOUTH,
RANGE 34 EAST, N.M.P.M.
LEA COUNTY, STATE OF NEW MEXICO

OCTOBER, 5, 2011

SURVEY NO. 564

MADRON SURVEYING, INC. 701 SOUTH CANAL CARLSBAD, NEW MEXICO
(505) 887-5630

301 SOUTH CANAL
(57E) 887-5630

VICINITY MAP



DEVON ENERGY PRODUCTION COMPANY, L.P.

PLAYA 2 STATE #1H

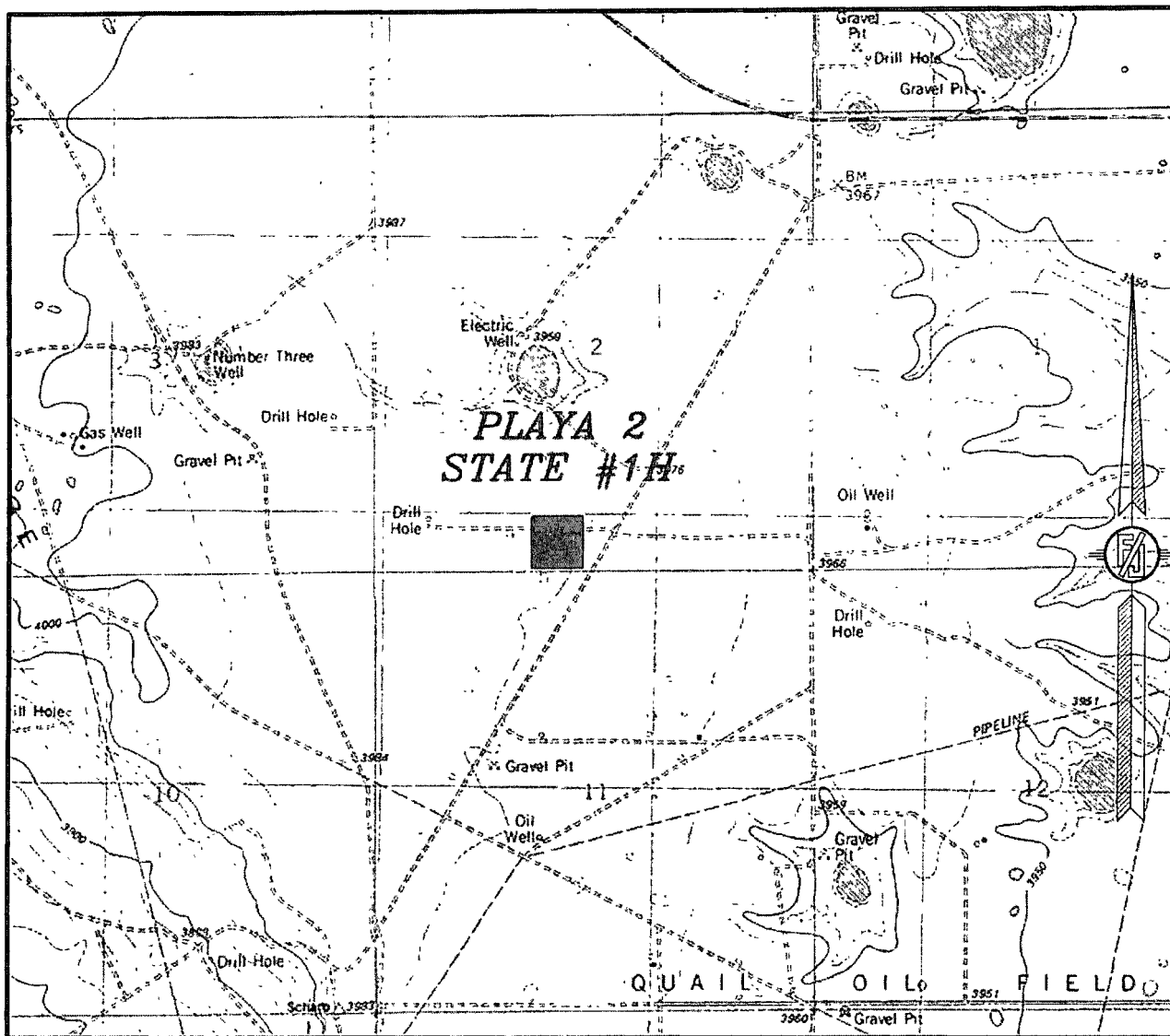
LOCATED 330 FT. FROM THE "SOUTH LINE
AND 2190 FT. FROM THE WEST LINE OF
SECTION 2, TOWNSHIP 19 SOUTH,
RANGE 34 EAST, N.M.P.M.
LEA COUNTY, STATE OF NEW MEXICO

OCTOBER, 5, 2011

SURVEY NO. 564

MADRON SURVEYING, INC. 301 SOUTH CANAL CARLSBAD, NEW MEXICO
(505) 887-5830

2, TOWNSHIP 19 SOUTH, RANGE 34 EAST, N.M.P.M.
LEA COUNTY, STATE OF NEW MEXICO
LOCATION VERIFICATION MAP



CONTOUR INTERVAL:
IRON HOUSE WELL

NOT TO SCALE

DEVON ENERGY PRODUCTION COMPANY, L.P.
PLAYA 2 STATE #1H

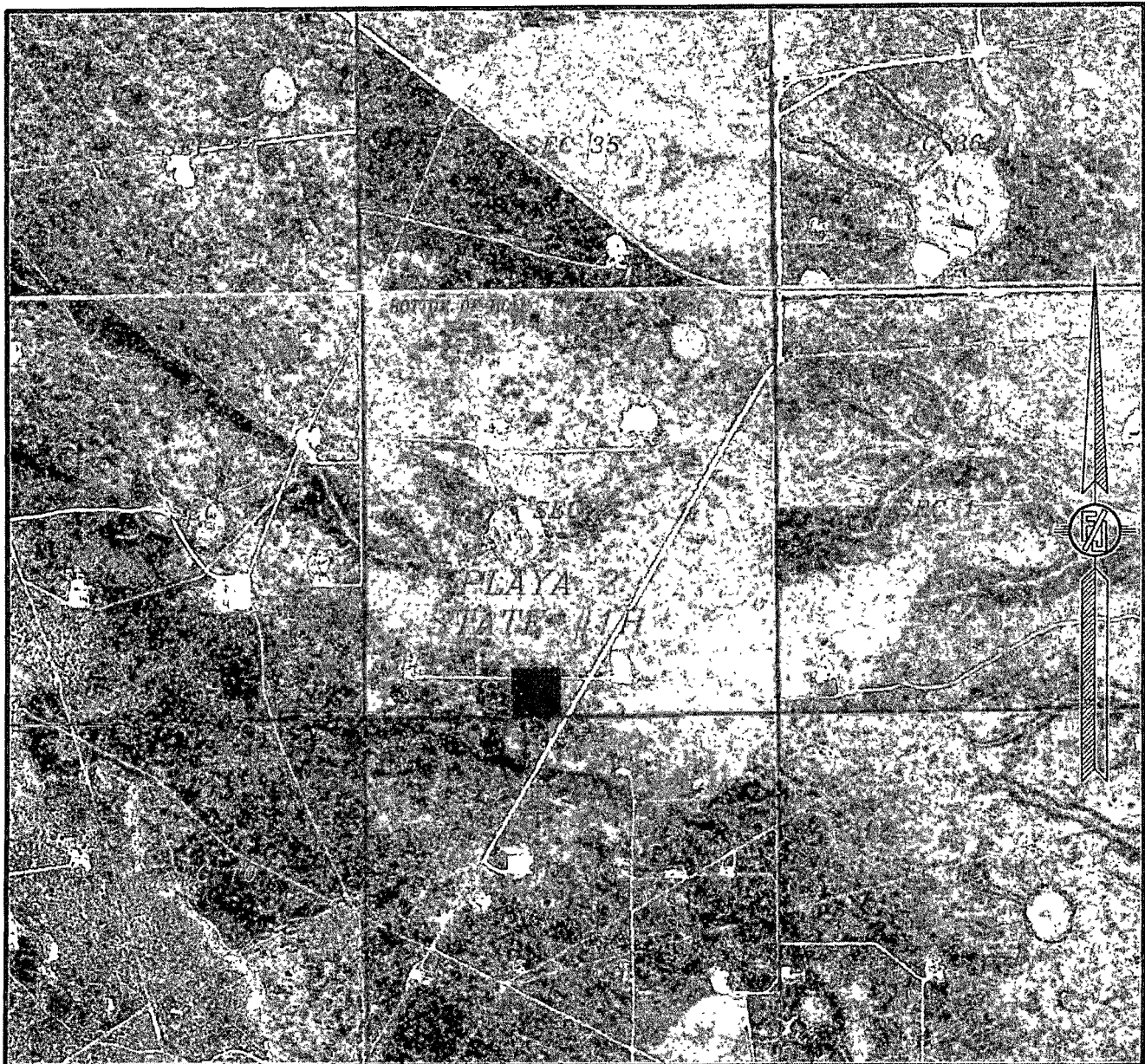
LOCATED 330 FT. FROM THE "SOUTH LINE
AND 2190 FT. FROM THE WEST LINE OF
SECTION 2, TOWNSHIP 19 SOUTH,
RANGE 34 EAST, N.M.P.M.
LEA COUNTY, STATE OF NEW MEXICO

OCTOBER, 5, 2011

SURVEY NO. 564

MADRON SURVEYING, INC. 621 SOUTH CANAL
(505) 867-5836 CARLSBAD, NEW MEXICO

SECTION 2, TOWNSHIP 19 SOUTH, RANGE 34 EAST, N.M.P.M.
LEA COUNTY, STATE OF NEW MEXICO
AERIAL PHOTO



NOT TO SCALE
AERIAL PHOTO:
GOOGLE EARTH
USDA - AUG, 2009

DEVON ENERGY PRODUCTION COMPANY, L.P.
PLAYA 2 STATE #1H

LOCATED 330 FT. FROM THE SOUTH LINE
AND 2190 FT. FROM THE WEST LINE OF
SECTION 2, TOWNSHIP 19 SOUTH,
RANGE 34 EAST, N.M.P.M.
LEA COUNTY, STATE OF NEW MEXICO

OCTOBER, 5, 2011

SURVEY NO. 564

MADRON SURVEYING, INC. 301 504TH CANAL (575) 287-5830 CARLSBAD, NEW MEXICO

