

DISTRICT I
1625 N. French Dr., Hobbs, NM 88240
Phone: (575) 393-6161 Fax: (575) 393-0720
DISTRICT II
811 S. First St., Artesia, NM 88210
Phone: (575) 748-1283 Fax: (575) 748-9720
DISTRICT III
1000 Rio Brazos Road, Aztec, NM 87410
Phone: (505) 334-6178 Fax: (505) 334-6170
DISTRICT IV
1220 S. St. Francis Dr., Santa Fe, NM 87505
Phone: (505) 476-3460 Fax: (505) 476-3462

State of New Mexico
Energy, Minerals & Natural Resources Department
OIL CONSERVATION DIVISION
1220 South St. Francis Dr.
Santa Fe, New Mexico 87505

HOBBS OCD

JAN 17 2012

Form C-102
Revised August 1, 2011
Submit one copy to appropriate
District Office

☐ AMENDED REPORT

WELL LOCATION AND ACREAGE DEDICATION

API Number 30-025-	Pool Code 44500	Pool Name Maljamar; Yeso West
Property Code 302508	Property Name JC FEDERAL	Well Number 54
OGRID No. 229137	Operator Name COG OPERATING, LLC	Elevation 4046'

Surface Location

UL or lot No.	Section	Township	Range	Lot Idn	Feet from the	North/South line	Feet from the	East/West line	County
M	22	17-S	32-E		700	SOUTH	445	WEST	LEA

Bottom Hole Location If Different From Surface

UL or lot No.	Section	Township	Range	Lot Idn	Feet from the	North/South line	Feet from the	East/West line	County
Dedicated Acres 40	Joint or Infill	Consolidation Code	Order No.						

NO ALLOWABLE WILL BE ASSIGNED TO THIS COMPLETION UNTIL ALL INTERESTS HAVE BEEN CONSOLIDATED OR A NON-STANDARD UNIT HAS BEEN APPROVED BY THE DIVISION

<p>DETAIL</p> <p>4049.6' 4048.2'</p> <p>600'</p> <p>600'</p> <p>4044.8' 4037.5'</p> <p>GEODETIC COORDINATES NAD 27 NME</p> <p>SURFACE LOCATION Y=660560.1 N X=675871.9 E</p> <p>LAT.=32.814659° N LONG.=103.760880° W</p> <p>445' SEE DETAIL</p> <p>700'</p>	<p>OPERATOR CERTIFICATION</p> <p>I hereby certify that the information herein is true and complete to the best of my knowledge and belief, and that this organization either owns a working interest or unleased mineral interest in the land including the proposed bottom hole location or has a right to drill this well at this location pursuant to a contract with an owner of such mineral or working interest, or to a voluntary pooling agreement or a compulsory pooling order heretofore entered by the division.</p> <p> 11/18/2011</p> <p>Signature Date</p> <p>Kelly J. Holly</p> <p>Printed Name</p> <p>kholly@gmail.com</p> <p>E-mail Address</p> <p>SURVEYOR CERTIFICATION</p> <p>I hereby certify that the well location shown on this plat was plotted from field notes of actual surveys made by me or under my supervision, and that the same is true and correct to the best of my belief.</p> <p>OCTOBER 31, 2011</p> <p>Date of Survey</p> <p>Signature & Seal of Professional Surveyor:</p> <p></p> <p>Certificate Number Gary G. Eidson 12641 Reb. No. 3239 AF JWSC W.O. 11.11.2324</p>
---	--

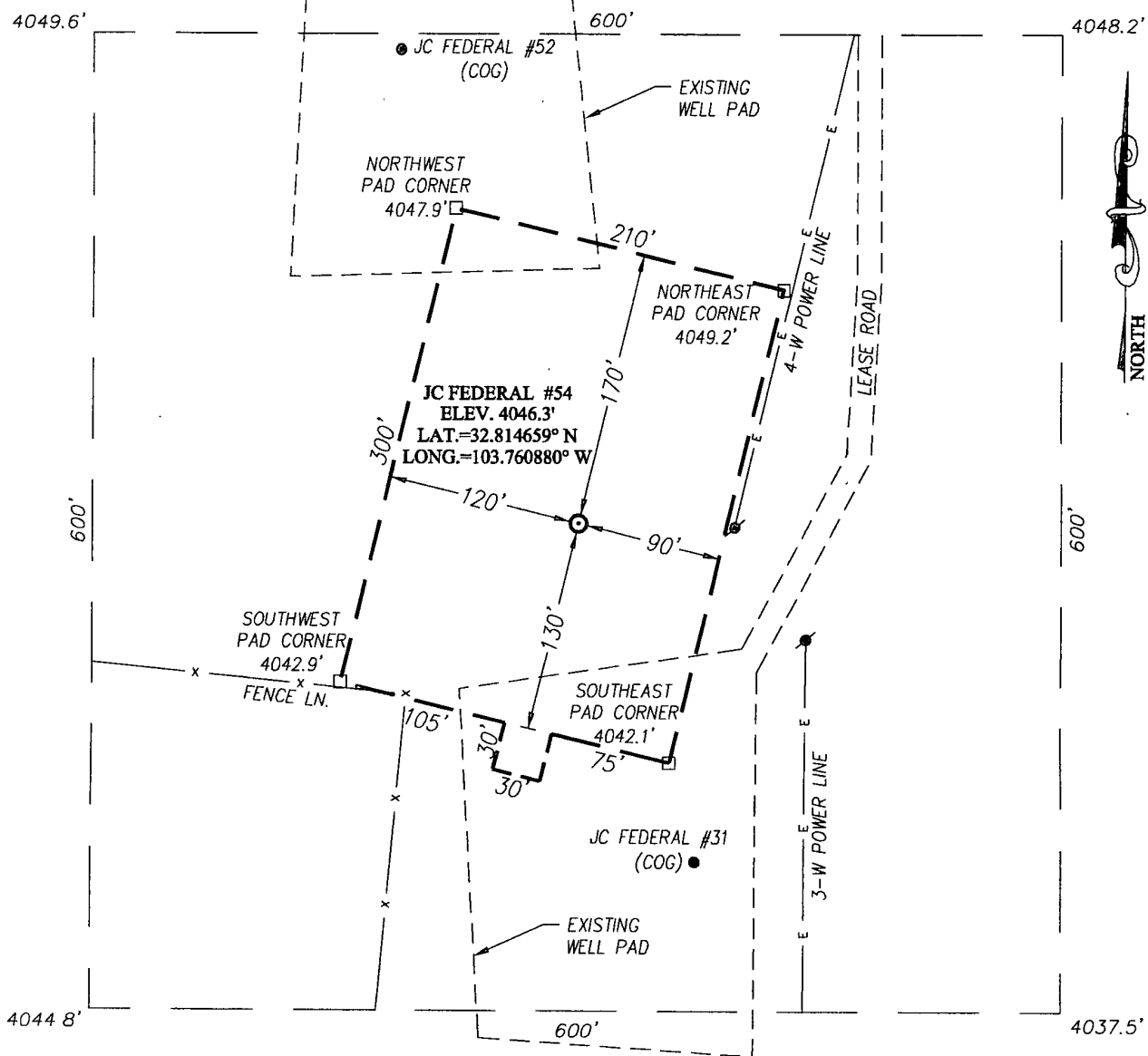
Amended Plat

JAN 24 2012

SECTION 22, TOWNSHIP 17 SOUTH, RANGE 32 EAST, N.M.P.M.

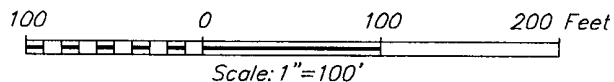
LEA COUNTY

NEW MEXICO



DIRECTIONS TO LOCATION

FROM THE INTERSECTION OF CONOCO ROAD AND MALJAMAR ROAD GO EAST ON A LEASE ROAD APPROX. 0.1 MILE. TURN RIGHT AND GO SOUTH APPROX. 0.1 MILE. THIS LOCATION IS APPROX. 150 FEET WEST OF THE LEASE ROAD.



PROVIDING SURVEYING SERVICES
SINCE 1946

JOHN WEST SURVEYING COMPANY

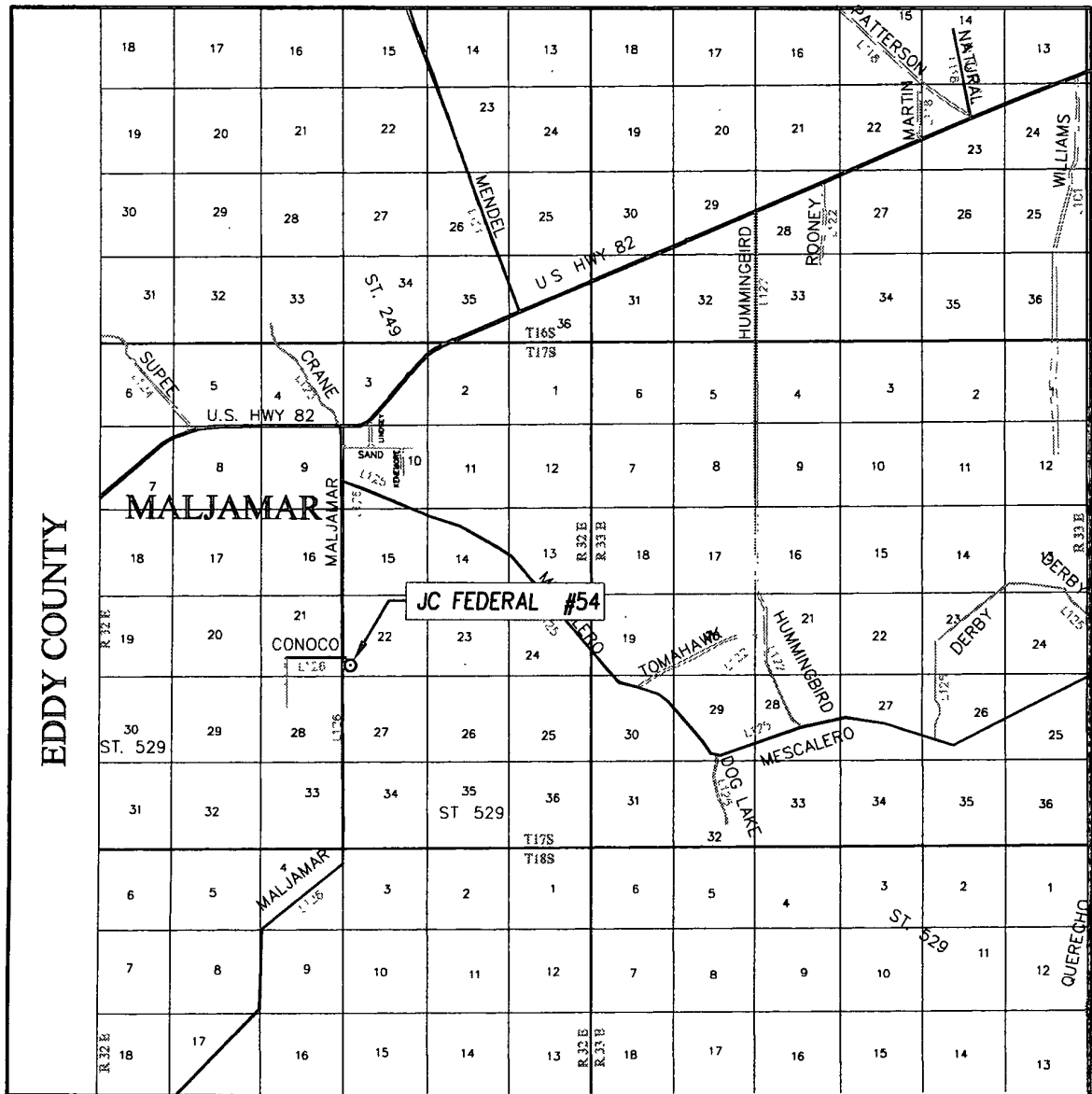
412 N. DAL PASO
HOBBS, N.M. 88240
(575) 393-3117

COG OPERATING, LLC

JC FEDERAL #54 WELL
LOCATED 700 FEET FROM THE SOUTH LINE
AND 445 FEET FROM THE WEST LINE OF SECTION 22,
TOWNSHIP 17 SOUTH, RANGE 32 EAST, N.M.P.M.,
LEA COUNTY, NEW MEXICO

Survey Date: 10/31/11	Sheet 1 of 1 Sheets
W.O. Number: 11.11.2324	Dr. By: AF Rev 1:
Date: 11/10/11	Rel. W.O.: 11112324 Scale: 1"=100'

VICINITY MAP



SCALE: 1" = 2 MILES

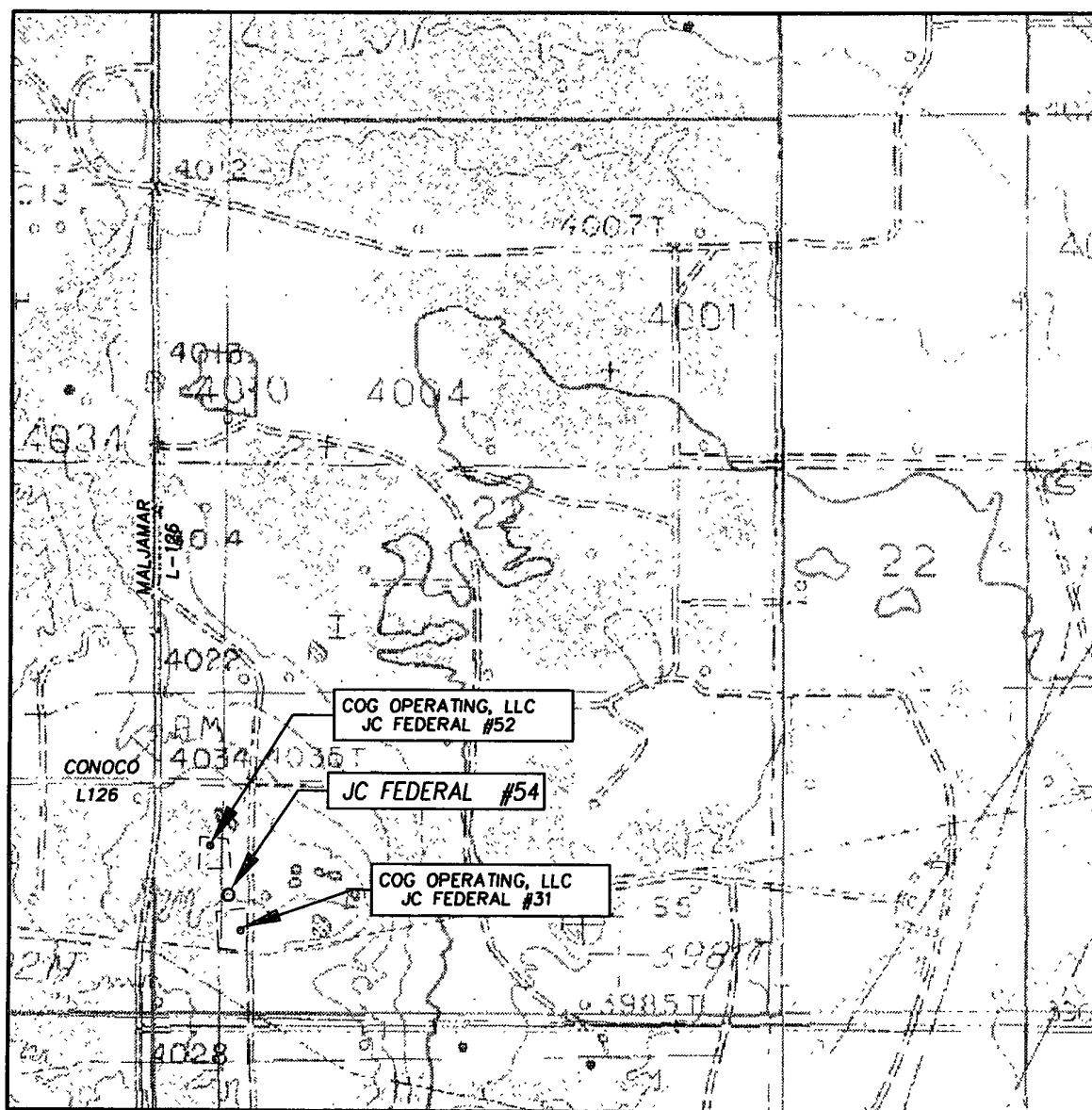
SEC. 22 TWP. 17-S RGE. 32-E
 SURVEY N.M.P.M.
 COUNTY LEA STATE NEW MEXICO
 DESCRIPTION 700' FSL & 445' FWL
 ELEVATION 4046'
 OPERATOR COG OPERATING, LLC
 LEASE JC FEDERAL

PROVIDING SURVEYING SERVICES
SINCE 1946

JOHN WEST SURVEYING COMPANY

412 N. DAL PASO
HOBBS, N.M. 88240
(575) 393-3117

LOCATION VERIFICATION MAP



SCALE: 1" = 1000'

CONTOUR INTERVAL:
MALJAMAR, N.M. - 10'
DOG LAKE, N.M. - 10'

SEC. 22 TWP. 17-S RGE 32-E

SURVEY N.M.P.M.

COUNTY LEA STATE NEW MEXICO

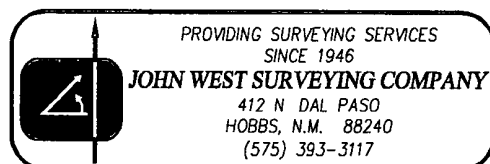
DESCRIPTION 700' FSL & 445' FWL

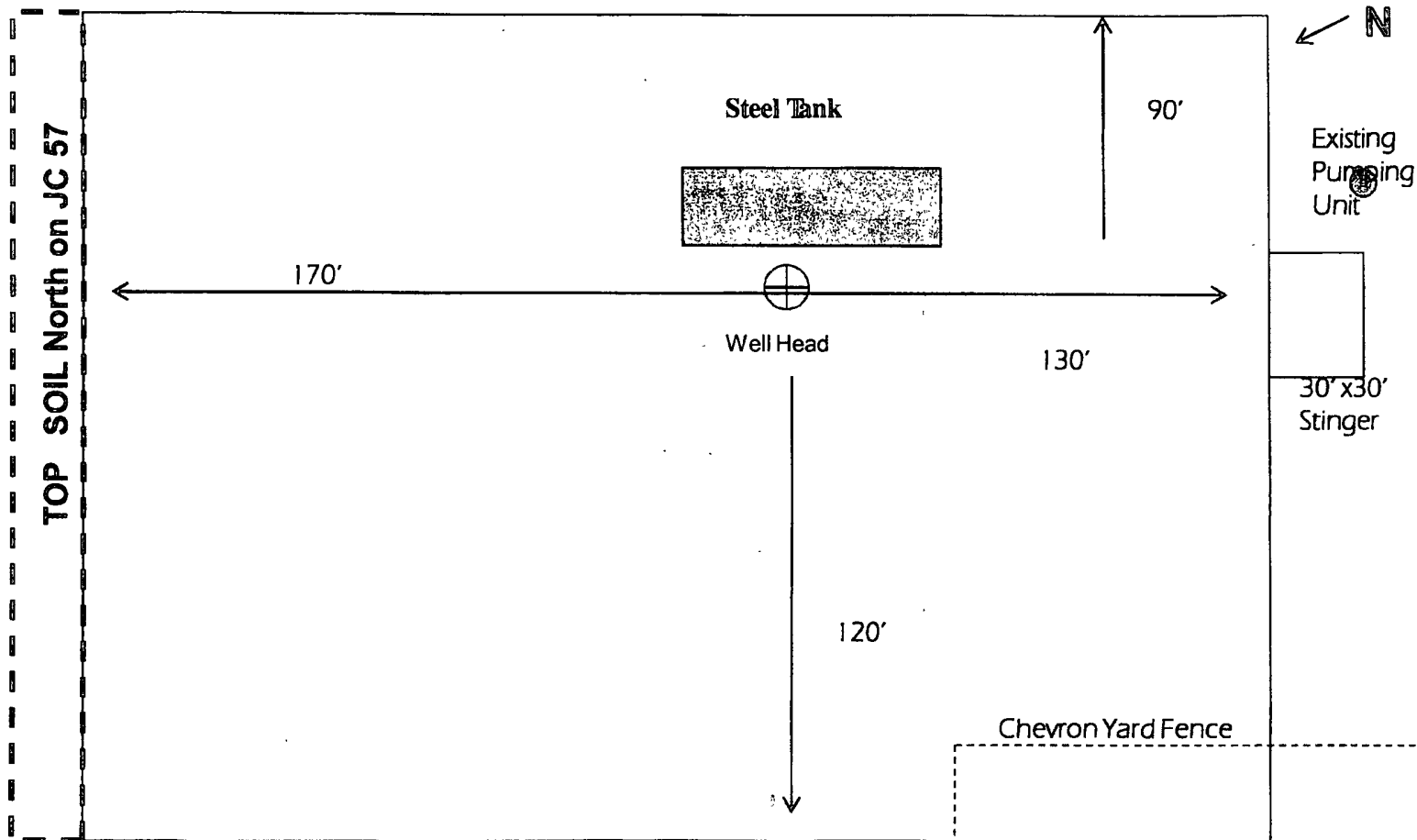
ELEVATION 4046'

OPERATOR COG OPERATING, LLC

LEASE JC FEDERAL

U.S.G.S. TOPOGRAPHIC MAP
MALJAMAR, N.M.





Not To Scale

COG OPERATING LLC
Right of Way Easement
System 9-10-2011 #51

