

DISTRICT I  
1625 N. French Dr., Hobbs, NM 88240  
Phone: (575) 393-6161 Fax: (575) 393-0720

DISTRICT II  
811 S. First St., Artesia, NM 88210  
Phone: (575) 748-1283 Fax: (575) 748-9720

DISTRICT III  
1000 Rio Brazos Road, Aztec, NM 87410  
Phone: (505) 334-6178 Fax: (505) 334-6170

DISTRICT IV  
1220 S. St. Francis Dr., Santa Fe, NM 87505  
Phone: (505) 476-3460 Fax: (505) 476-3462

State of New Mexico  
Energy, Minerals & Natural Resources Department  
OIL CONSERVATION DIVISION  
1220 South St. Francis Dr.  
Santa Fe, New Mexico 87505

HOBBS OCD

JAN 23 2012

Form C-102  
Revised August 1, 2011  
Submit one copy to appropriate  
District Office

RECEIVED

☐ AMENDED REPORT

WELL LOCATION AND ACREAGE DEDICATION PLAT

API Number 30-025	Pool Code 44500	Pool Name Maljamar; Yeso, West
Property Code 302498	Property Name GC FEDERAL	Well Number 57
OGRID No. 229137	Operator Name COG OPERATING, LLC	Elevation 3930'

Surface Location

UL or lot No.	Section	Township	Range	Lot Idn	Feet from the	North/South line	Feet from the	East/West line	County
K	19	17-S	32-E		1690	SOUTH	1895	WEST	LEA

Bottom Hole Location If Different From Surface

UL or lot No.	Section	Township	Range	Lot Idn	Feet from the	North/South line	Feet from the	East/West line	County
K	19	17-S	32-E		1650	SOUTH	1650	WEST	LEA

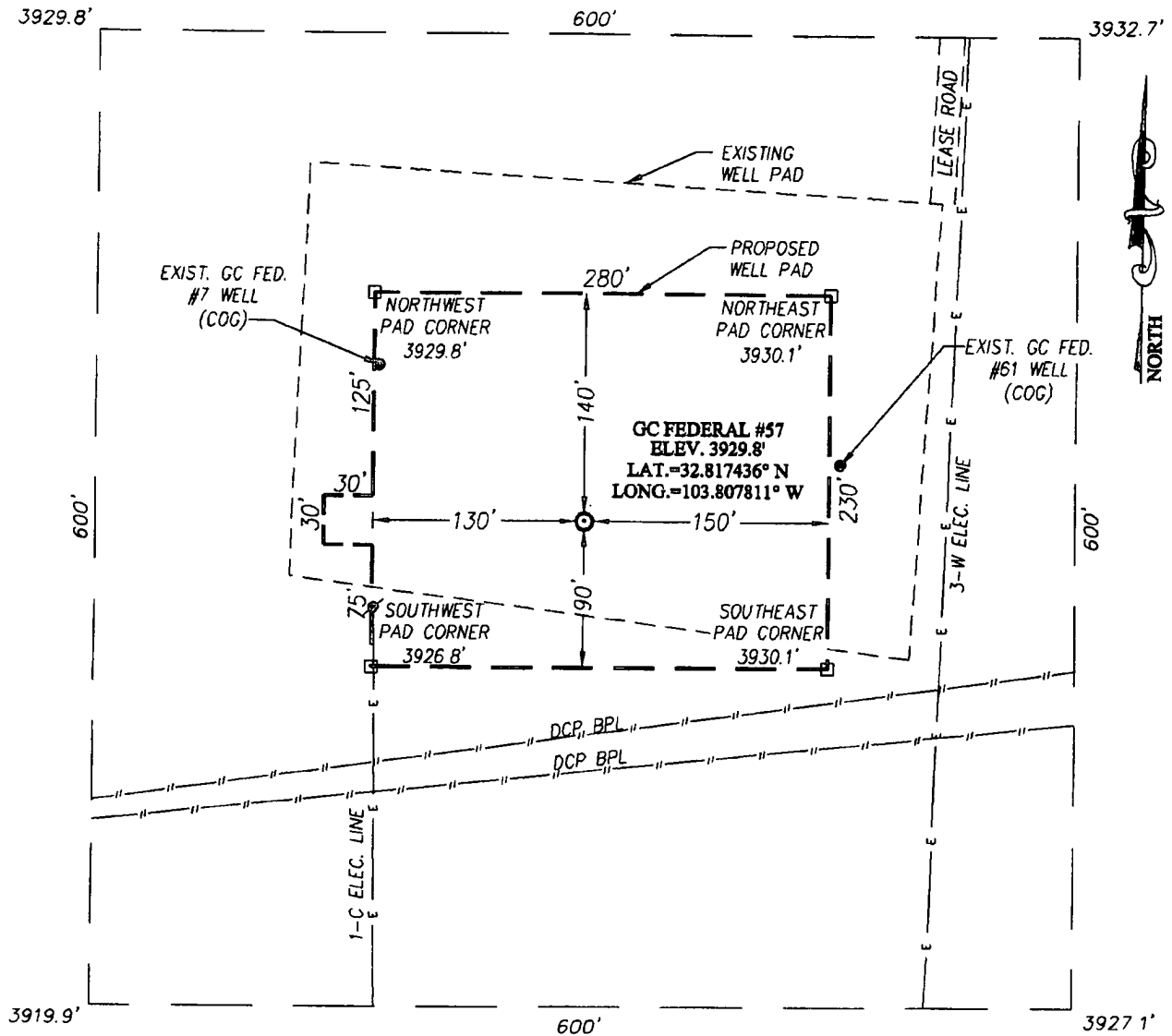
Dedicated Acres	Joint or Infill	Consolidation Code	Order No.
40			

NO ALLOWABLE WILL BE ASSIGNED TO THIS COMPLETION UNTIL ALL INTERESTS HAVE BEEN CONSOLIDATED OR A NON-STANDARD UNIT HAS BEEN APPROVED BY THE DIVISION

<p>LOT 1</p> <p>40.98 AC. LOT 2</p> <p>DETAIL</p> <p>3929.8' 3932.7'</p> <p>600'</p> <p>3919.9' 3927.1'</p> <p>40.98 AC. LOT 3</p> <p>GRID AZ. = 260°30'45"</p> <p>HORZ. DIST = 248.3'</p> <p>1895'</p> <p>1650'</p> <p>40.98 AC. LOT 4</p> <p>Penetration Point 1659 FBL + 1640 FWL</p> <p>40.98 AC.</p> <p>1650'</p> <p>1690'</p> <p>S.L. SEE DETAIL</p> <p>CORNER COORDINATES TABLE</p> <p>① - Y=662444.2 N, X=660880.1 E</p> <p>② - Y=662449.3 N, X=662211.9 E</p> <p>③ - Y=661129.2 N, X=622215.1 E</p> <p>④ - Y=661124.2 N, X=660885.4 E</p> <p>GEODETIC COORDINATES NAD 27 NME</p> <p>SURFACE LOCATION Y=661495.7 N X=661448.4 E</p> <p>LAT. = 32.817436° N LONG. = 103.807811° W</p> <p>BOTTOM HOLE LOCATION Y=661454.8 N X=661203.6 E</p>	<p>OPERATOR CERTIFICATION</p> <p>I hereby certify that the information herein is true and complete to the best of my knowledge and belief, and that this organization either owns a working interest or unleased mineral interest in the land including the proposed bottom hole location or has a right to drill this well at this location pursuant to a contract with an owner of such mineral or working interest, or to a voluntary pooling agreement or a compulsory pooling order heretofore entered by the division.</p> <p><i>Kelly J. Holly</i> 12-13-11 Signature Date</p> <p>Kelly J. Holly Printed Name</p> <p>kholly@concho.com E-mail Address</p> <p>SURVEYOR CERTIFICATION</p> <p>I hereby certify that the well location shown on this plat was plotted from field notes of actual surveys made by me or under my supervision, and that the same is true and correct to the best of my belief</p> <p>NOVEMBER 18, 2011</p> <p>Date of Survey</p> <p>Signature of Professional Surveyor:</p> <p>RONALD J. EIDSON NEW MEXICO 3239</p> <p>12/18/2011</p> <p>Certified by: Ronald J. Eidson 12641 Professional Surveyor: Ronald J. Eidson 3239</p> <p>AF REV: 12/8/11 JWSC W.O.: 11.11.2507</p>
--	--

JAN 25 2012

**SECTION 19, TOWNSHIP 17 SOUTH, RANGE 32 EAST, N.M.P.M.**  
LEA COUNTY NEW MEXICO

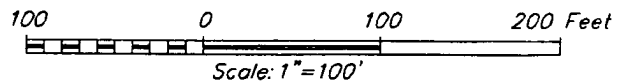


**DIRECTIONS TO LOCATION**

FROM THE INTERSECTION OF U.S. HIGHWAY #82 AND C.R. #224 (RIPPLE) GO SOUTHEAST THEN SOUTH ON C.R. #224 APPROX. 1.4 MILES. TURN LEFT AND GO EAST APPROX. 0.4 MILES. TURN RIGHT AND GO SOUTH APPROX. 0.2 MILES TO THE GC FEDERAL #61. THIS LOCATION STAKE IS APPROX 161 FEET SOUTHWEST OF THE EXISTING COG PUMPING UNIT.



PROVIDING SURVEYING SERVICES  
SINCE 1946  
**JOHN WEST SURVEYING COMPANY**  
412 N. DAL PASO  
HOBBS, N.M. 88240  
(575) 393-3117

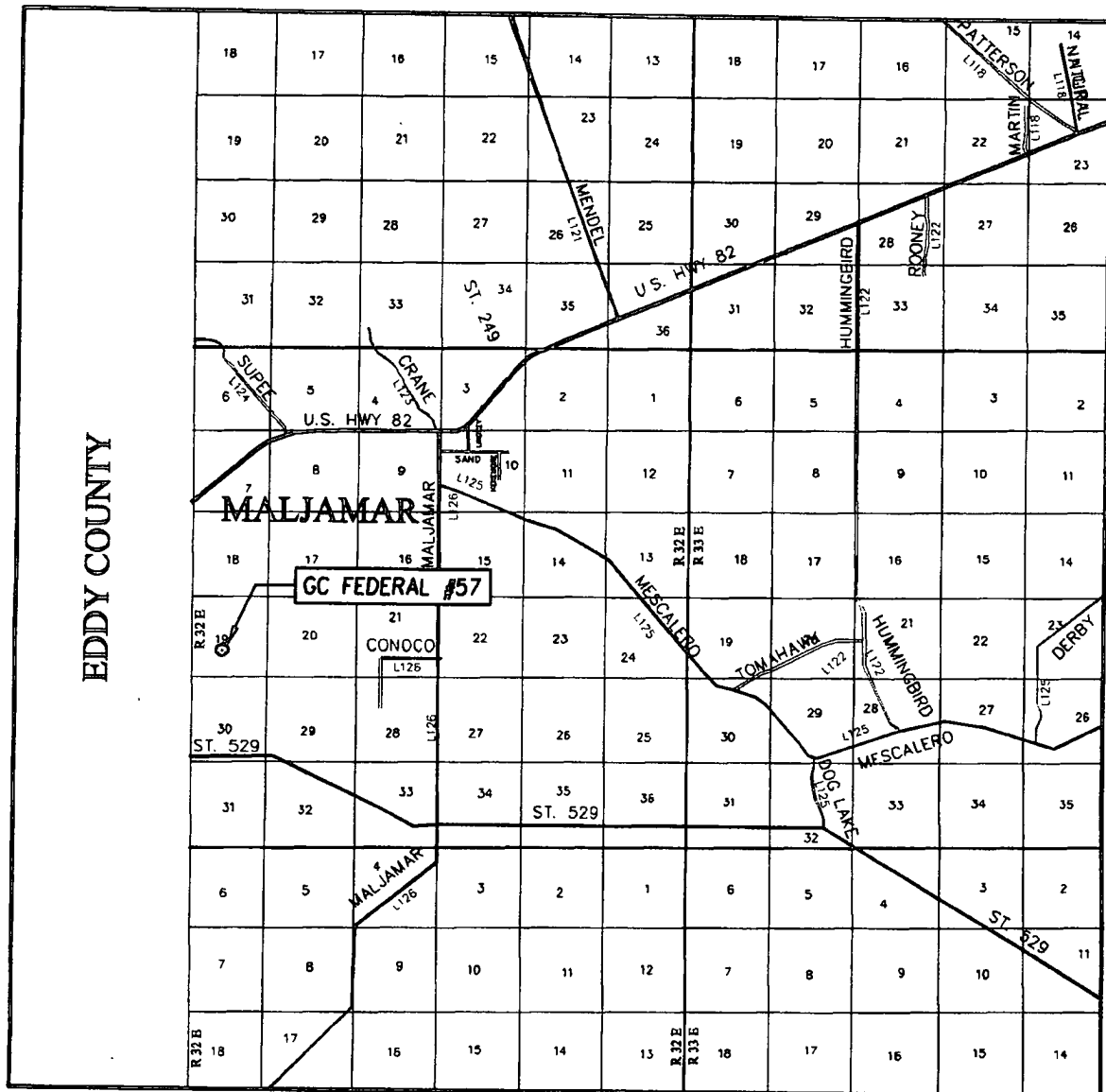


**COG OPERATING, LLC**

GC FEDERAL #57 WELL  
LOCATED 1690 FEET FROM THE SOUTH LINE  
AND 1895 FEET FROM THE WEST LINE OF SECTION 19,  
TOWNSHIP 17 SOUTH, RANGE 32 EAST, N.M.P.M.,  
LEA COUNTY, NEW MEXICO

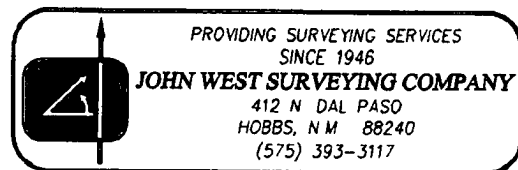
Survey Date: 11/18/11	Sheet 1 of 1 Sheets
W.O. Number: 11.11.2507	Dr. By: AF Rev 1:
Date: 11/22/11	Rel. W.O.: 11112507 Scale: 1"=100'

# VICINITY MAP

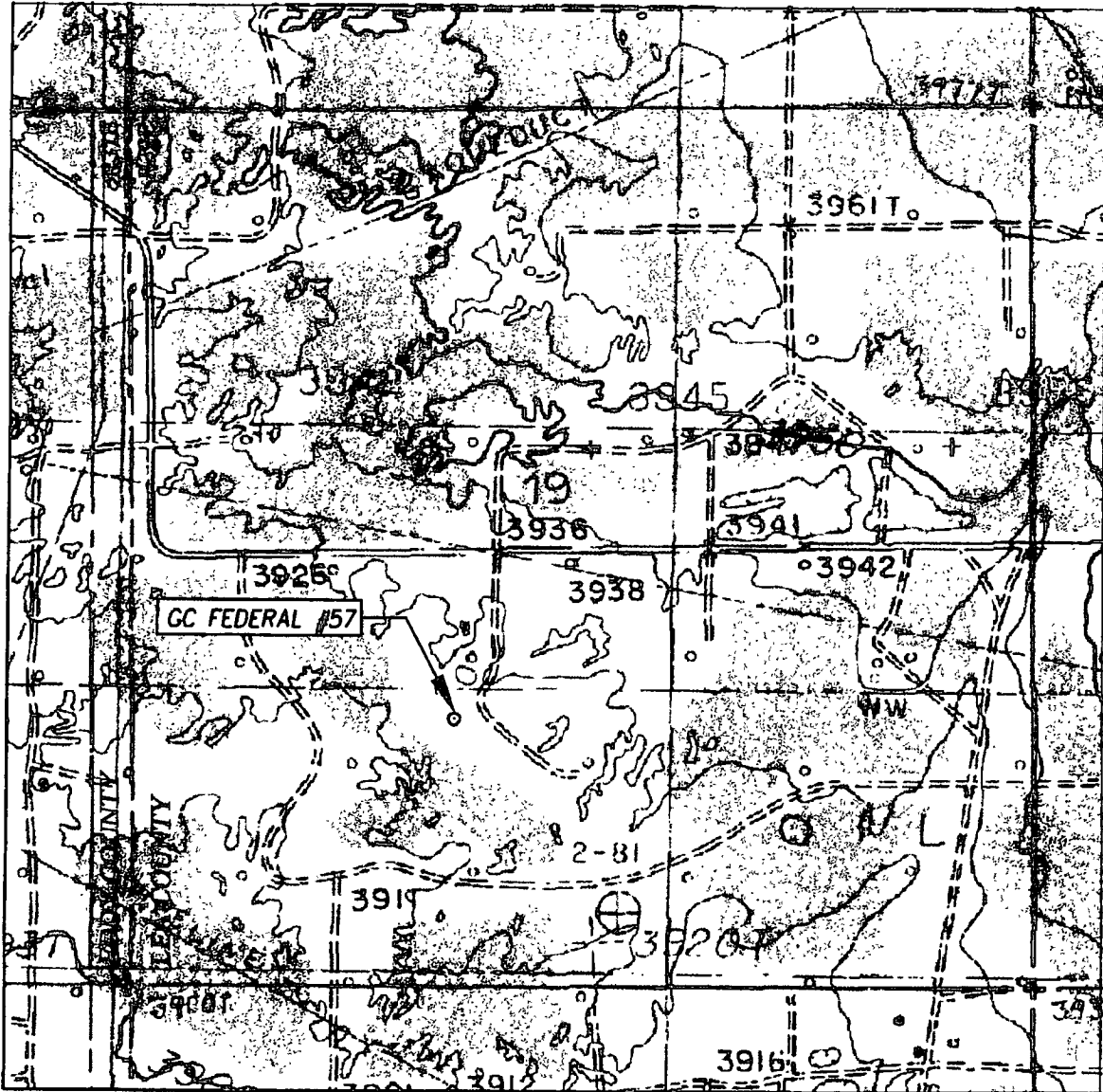


SCALE: 1" = 2 MILES

SEC. 19 TWP 17-S RGE. 32-E  
 SURVEY N.M.P.M.  
 COUNTY LEA STATE NEW MEXICO  
 DESCRIPTION 1690' FSL & 1895' FWL  
 ELEVATION 3930'  
 OPERATOR COG OPERATING, LLC  
 LEASE GC FEDERAL



# LOCATION VERIFICATION MAP



SCALE: 1" = 1000'

CONTOUR INTERVAL:  
MALJAMAR, N.M. - 10'

SEC. 19 TWP. 17-S RGE 32-E

SURVEY \_\_\_\_\_ N.M.P.M. \_\_\_\_\_

COUNTY LEA STATE NEW MEXICO

DESCRIPTION 1625' FSL & 1907' FWL

ELEVATION 3928'

OPERATOR COG OPERATING, LLC

LEASE GC FEDERAL

U.S.G.S. TOPOGRAPHIC MAP  
MALJAMAR, N.M.

