

DISTRICT I  
1020 N. FRENCH DR., HOBBS, NM 88240

DISTRICT II  
1301 W. GRAND AVENUE, ARTESIA, NM 88210

DISTRICT III  
1000 Rio Brazos Rd., Aztec, NM 87410

DISTRICT IV  
1220 S. ST. FRANCIS DR., SANTA FE, NM 87505

State of New Mexico  
Energy, Minerals and Natural Resources Department

OIL CONSERVATION DIVISION  
1220 SOUTH ST. FRANCIS DR.  
Santa Fe, New Mexico 87505

HOBBS OCD

FEB 07 2012

RECEIVED

Form C-102  
Revised October 12, 2005  
Submit to Appropriate District Office  
State Lease - 4 Copies  
Fee Lease - 3 Copies

WELL LOCATION AND ACREAGE DEDICATION PLAT

☐ AMENDED REPORT

API Number 30-025-39581	Pool Code 907164	Pool Name monument; Abo, Southeast
Property Code 302314	Property Name V. LAUGHLIN	Well Number 007
OGRID No. 813	Operator Name APACHE CORPORATION	Elevation 3558'

Surface Location

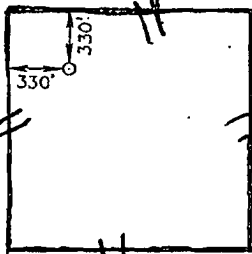
UL or lot No. D	Section 9	Township 20-S	Range 37-E	Lot Idn	Feet from the 330	North/South line NORTH	Feet from the 330	East/West line WEST	County LEA.
--------------------	--------------	------------------	---------------	---------	----------------------	---------------------------	----------------------	------------------------	----------------

Bottom Hole Location If Different From Surface

UL or lot No.	Section	Township	Range	Lot Idn	Feet from the	North/South line	Feet from the	East/West line	County
---------------	---------	----------	-------	---------	---------------	------------------	---------------	----------------	--------

Dedicated Acres 40.0	Joint or Infill	Consolidation Code	Order No. DHC 4322
-------------------------	-----------------	--------------------	-----------------------

NO ALLOWABLE WILL BE ASSIGNED TO THIS COMPLETION UNTIL ALL INTERESTS HAVE BEEN CONSOLIDATED  
OR A NON-STANDARD UNIT HAS BEEN APPROVED BY THE DIVISION

	<p>GEODETIC COORDINATES NAD 27 NME</p> <p>Y=581441.2 N X=829502.2 E</p> <p>LAT.=32.593931° N LONG.=103.263477° W LAT.=32°35'38.15" N LONG.=103°15'48.52" W</p>	<p>OPERATOR CERTIFICATION</p> <p>I hereby certify that the information herein is true and complete to the best of my knowledge and belief, and that this organization either owns a working interest or unleased mineral interest in the land including the proposed bottom hole location or has a right to drill this well at this location pursuant to a contract with an owner of such mineral or working interest, or to a voluntary pooling agreement or a compulsory pooling order heretofore entered by the division.</p> <p><i>Bev Hatfield</i> 2-6-12 Signature Date Bev Hatfield Printed Name</p> <p>SURVEYOR CERTIFICATION</p> <p>I hereby certify that the well location shown on this plat was plotted from field notes of actual surveys made by me or under my supervision, and that the same is true and correct to the best of my belief.</p> <p>RONALD EIDSON NOVEMBER 4, 2009 Date Surveyed 3224 REV: 12/7/09 Signature &amp; Seal of Professional Surveyor <i>Ronald Eidson</i> 12-07-09 09.11.0984 Certificate No. RONALD EIDSON 3239</p>
---	--	--

DISTRICT I  
1625 N. FRENCH DR., HOBBS, NM 88240

DISTRICT II  
1301 W. GRAND AVENUE, ARTESIA, NM 88210

DISTRICT III  
1000 Rio Brazos Rd., Aztec, NM 87410

DISTRICT IV  
1220 S. ST. FRANCIS DR., SANTA FE, NM 87505

State of New Mexico

**HOBBS OGD** Energy, Minerals and Natural Resources Department

Form C-102

Revised October 12, 2005

Submit to Appropriate District Office

State Lease - 4 Copies

Fee Lease - 3 Copies

**OIL CONSERVATION DIVISION**  
FEB 07 2012  
2220 SOUTH ST. FRANCIS DR.  
Santa Fe, New Mexico 87505

**RECEIVED**

**WELL LOCATION AND ACREAGE DEDICATION PLAT**

☐ AMENDED REPORT

API Number <b>30-025-39587</b>	Pool Code <b>47090</b>	Pool Name <b>monument; Tubbs</b>
Property Code <b>302374</b>	Property Name <b>V. LAUGHLIN</b>	Well Number <b>007</b>
GRID No. <b>873</b>	Operator Name <b>APACHE CORPORATION</b>	Elevation <b>3558'</b>

**Surface Location**

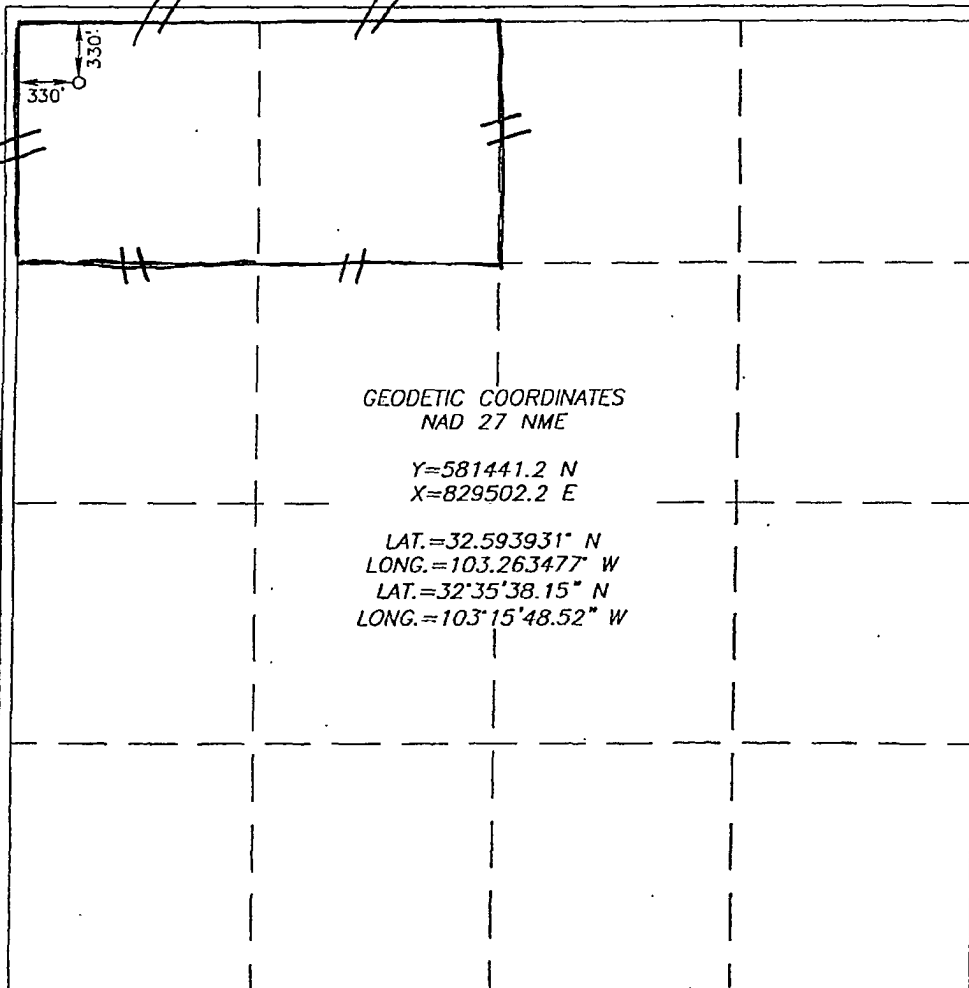
UL or lot No.	Section	Township	Range	Lot Idn	Feet from the	North/South line	Feet from the	East/West line	County
D	9	20-S	37-E		330	NORTH	330	WEST	LEA

**Bottom Hole Location If Different From Surface**

UL or lot No.	Section	Township	Range	Lot Idn	Feet from the	North/South line	Feet from the	East/West line	County

Dedicated Acres	Joint or Infill	Consolidation Code	Order No.
<b>80.0</b>			<b>DHC 4322</b>

**NO ALLOWABLE WILL BE ASSIGNED TO THIS COMPLETION UNTIL ALL INTERESTS HAVE BEEN CONSOLIDATED OR A NON-STANDARD UNIT HAS BEEN APPROVED BY THE DIVISION**



**OPERATOR CERTIFICATION**

I hereby certify that the information herein is true and complete to the best of my knowledge and belief, and that this organization either owns a working interest or unleased mineral interest in the land including the proposed bottom hole location or has a right to drill this well at this location pursuant to a contract with an owner of such mineral or working interest, or to a voluntary pooling agreement or a compulsory pooling order heretofore entered by the division.

Signature: *Bert Hatfield*  
Printed Name: **Bert Hatfield**  
Date: **2-6-12**

**SURVEYOR CERTIFICATION**

I hereby certify that the well location shown on this plat was plotted from field notes of actual survey made by me or under my supervision, and that the same is true and correct to the best of my belief.

Date Surveyed: **3/2/09** REV: **12/7/09**  
Signature & Seal of Professional Surveyor

*Ronald E. Eidsen*  
12-07-09  
09.11.0984

Certificate No. **RONALD EIDSON** 3239

## DISTRICT I

1625 N. FRENCH DR., HOBBBS, NM 87401

HOBBS OCD

## State of New Mexico

Energy, Minerals and Natural Resources Department

Form C-102

Revised October 12, 2005

Submit to Appropriate District Office

State Lease - 4 Copies

Fee Lease - 3 Copies

## DISTRICT II

1301 W. GRAND AVENUE, ARTESIA, NM 88210

## OIL CONSERVATION DIVISION

1220 SOUTH ST. FRANCIS DR.

Santa Fe, New Mexico 87505

## DISTRICT III

1000 Rio Brazos Rd., Aztec, NM 87410

FEB 07 2012

## DISTRICT IV

1220 S. ST. FRANCIS DR., SANTA FE, NM 87505

RECEIVED

## WELL LOCATION AND ACREAGE DEDICATION PLAT

☐ AMENDED REPORT

API Number 30-025-31587	Pool Code 57000	Pool Name Skaggs, Drinkard
Property Code 302314	Property Name V. LAUGHLIN	Well Number 7
OGRID No. 8713	Operator Name APACHE CORPORATION	Elevation 3558'

## Surface Location

UL or Lot No.	Section	Township	Range	Lot Ida	Feet from the	North/South line	Feet from the	East/West line	County
D	9	20-S	37-E		330	NORTH	330	WEST	LEA

## Bottom Hole Location If Different From Surface

UL or Lot No.	Section	Township	Range	Lot Ida	Feet from the	North/South line	Feet from the	East/West line	County

Dedicated Acres	Joint or Infill	Consolidation Code	Order No.
40.0			DHC 4322

NO ALLOWABLE WILL BE ASSIGNED TO THIS COMPLETION UNTIL ALL INTERESTS HAVE BEEN CONSOLIDATED  
OR A NON-STANDARD UNIT HAS BEEN APPROVED BY THE DIVISION

	<p>GEODETIC COORDINATES NAD 27 NME</p> <p>Y=581441.2 N X=829502.2 E</p> <p>LAT.=32.593931° N LONG.=103.263477° W LAT.=32°35'38.15" N LONG.=103°15'48.52" W</p>	<p><b>OPERATOR CERTIFICATION</b></p> <p>I hereby certify that the information herein is true and complete to the best of my knowledge and belief, and that this organization either owns a working interest or unleased mineral interest in the land including the proposed bottom hole location or has a right to drill this well at this location pursuant to a contract with an owner of such mineral or working interest, or to a voluntary pooling agreement or a compulsory pooling order heretofore entered by the division.</p> <p><i>[Signature]</i> Signature Bert Hatfield Printed Name Date 2-6-12</p>
		<p><b>SURVEYOR CERTIFICATION</b></p> <p>I hereby certify that the well location shown on this plat was plotted from field notes of actual surveys made by me or under my supervision, and that the same is true and correct to the best of my belief.</p> <p>RONALD EIDSON NOVEMBER 4, 2009</p> <p>Date Surveyed 3-2-09 REV: 12/7/09 Signature &amp; Seal of Professional Surveyor <i>[Signature]</i> 12-07-09 09.11.0984</p>
		<p>Certificate No. RONALD EIDSON 3239</p>