

DISTRICT I
1625 N. French Dr., Hobbs, NM 88240
Phone: (575) 393-6161 Fax: (575) 393-0728

DISTRICT II
811 S. First St., Artesia, NM 88210
Phone: (575) 748-1283 Fax: (575) 748-9720

DISTRICT III
1000 Rio Brazos Road, Aztec, NM 87410
Phone: (505) 334-6178 Fax: (505) 334-6170

DISTRICT IV
1220 S. St. Francis Dr., Santa Fe, NM 87505
Phone: (505) 476-3460 Fax: (505) 476-3462

State of New Mexico
Energy, Minerals & Natural Resources Department
OIL CONSERVATION DIVISION
1220 South St. Francis Dr.
Santa Fe, New Mexico 87505

Form C-102
Revised August 1, 2011
Submit one copy to appropriate
District Office

☐ AMENDED REPORT

RECEIVED

WELL LOCATION AND ACREAGE DEDICATION PLAT

API Number 30-025-39883	Pool Code 96674	Pool Name Triple X; Bone Spring, West
Property Code 39018	Property Name MACHO NACHO STATE	Well Number 2H
OGRID No. 229137	Operator Name COG OPERATING, LLC	Elevation 3614'

Surface Location

UL or lot No.	Section	Township	Range	Lot Idn	Feet from the	North/South line	Feet from the	East/West line	County
H	7	24-S	33-E		1870	NORTH	330	EAST	LEA

Bottom Hole Location If Different From Surface

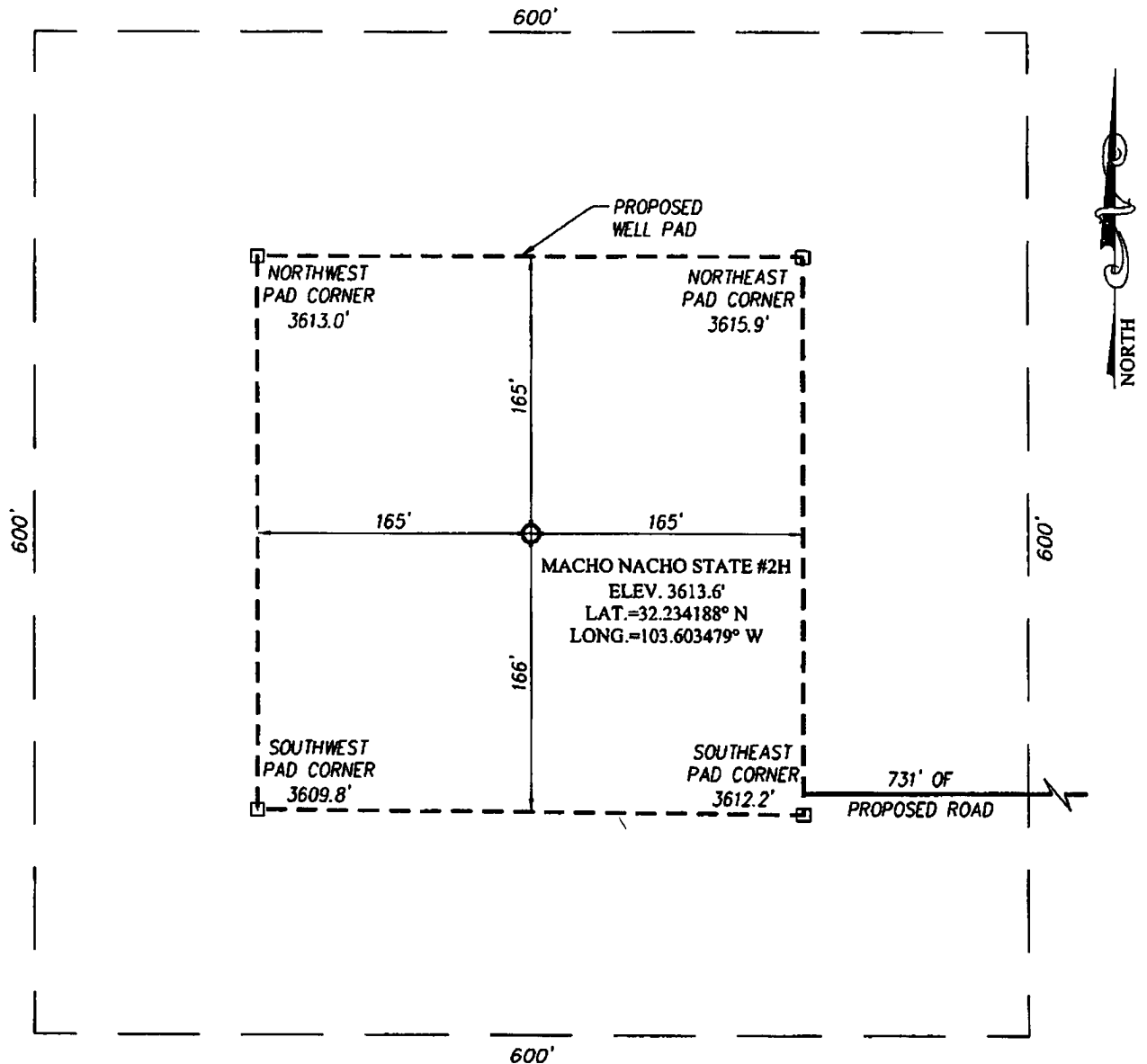
UL or lot No.	Section	Township	Range	Lot Idn	Feet from the	North/South line	Feet from the	East/West line	County
2	7	24-S	33-E		1870	NORTH	330	WEST	LEA
Dedicated Acres 160	Joint or Infill	Consolidation Code	Order No.						

NO ALLOWABLE WILL BE ASSIGNED TO THIS COMPLETION UNTIL ALL INTERESTS HAVE BEEN CONSOLIDATED OR A NON-STANDARD UNIT HAS BEEN APPROVED BY THE DIVISION

		<p>OPERATOR CERTIFICATION</p> <p>I hereby certify that the information herein is true and complete to the best of my knowledge and belief, and that this organization either owns a working interest or unleased mineral interest in the land including the proposed bottom hole location or has a right to drill this well at this location pursuant to a contract with an owner of such mineral or working interest, or to a voluntary pooling agreement or a compulsory pooling order heretofore entered by the division.</p> <p>Signature: <i>Melanie Parker</i> Date: <i>2/17/12</i></p> <p>Printed Name: <i>Melanie J. Parker</i></p> <p>E-mail Address: _____</p>
<p>GEODETIC COORDINATES NAD 27 NME</p> <p>SURFACE LOCATION Y=449683.1 N X=725676.6 E LAT.=32.234188° N LONG.=103.603479° W</p> <p>BOTTOM HOLE LOCATION Y=449656.3 N X=721110.9 E</p>		<p>SURVEYOR CERTIFICATION</p> <p>I hereby certify that the well location shown on this plat was plotted from field notes of actual surveys made by me or under my supervision, and that the same is true and correct to the best of my belief.</p> <p>FEBRUARY 6, 2012</p> <p>Date of Survey: _____ Signature and Seal of Professional Surveyor: _____</p>
<p>CORNER COORDINATES TABLE</p> <p>Ⓐ - Y=450203.8 N, X=720777.8 E Ⓑ - Y=450235.2 N, X=726002.6 E Ⓒ - Y=448883.8 N, X=720985.4 E Ⓓ - Y=448915.0 N, X=726012.1 E</p>		<p>Professional Surveyor Seal: RONALD J. EIDSON, NEW MEXICO, REG. NO. 3239, EXPIRATION DATE 09/2012</p> <p>Certificate Number: _____ DSS: _____ JWSC W.O.: 12.11.0191</p>

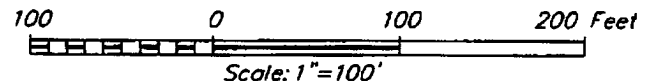
FEB 23 2012

SECTION 7, TOWNSHIP 24 SOUTH, RANGE 33 EAST, N.M.P.M.
LEA COUNTY **NEW MEXICO**



DIRECTIONS TO LOCATION

AT MILE MARKER #27 ON HIGHWAY 128, TURN RIGHT AND GO NORTH APPROX. 1.1 MILES. TURN RIGHT AND GO NORTHEAST APPROX. 0.7 MILES. TURN LEFT AND FOLLOW PROPOSED ROAD SURVEY STAKES WEST APPROX. 731 FEET TO THIS LOCATION.



COG OPERATING, LLC

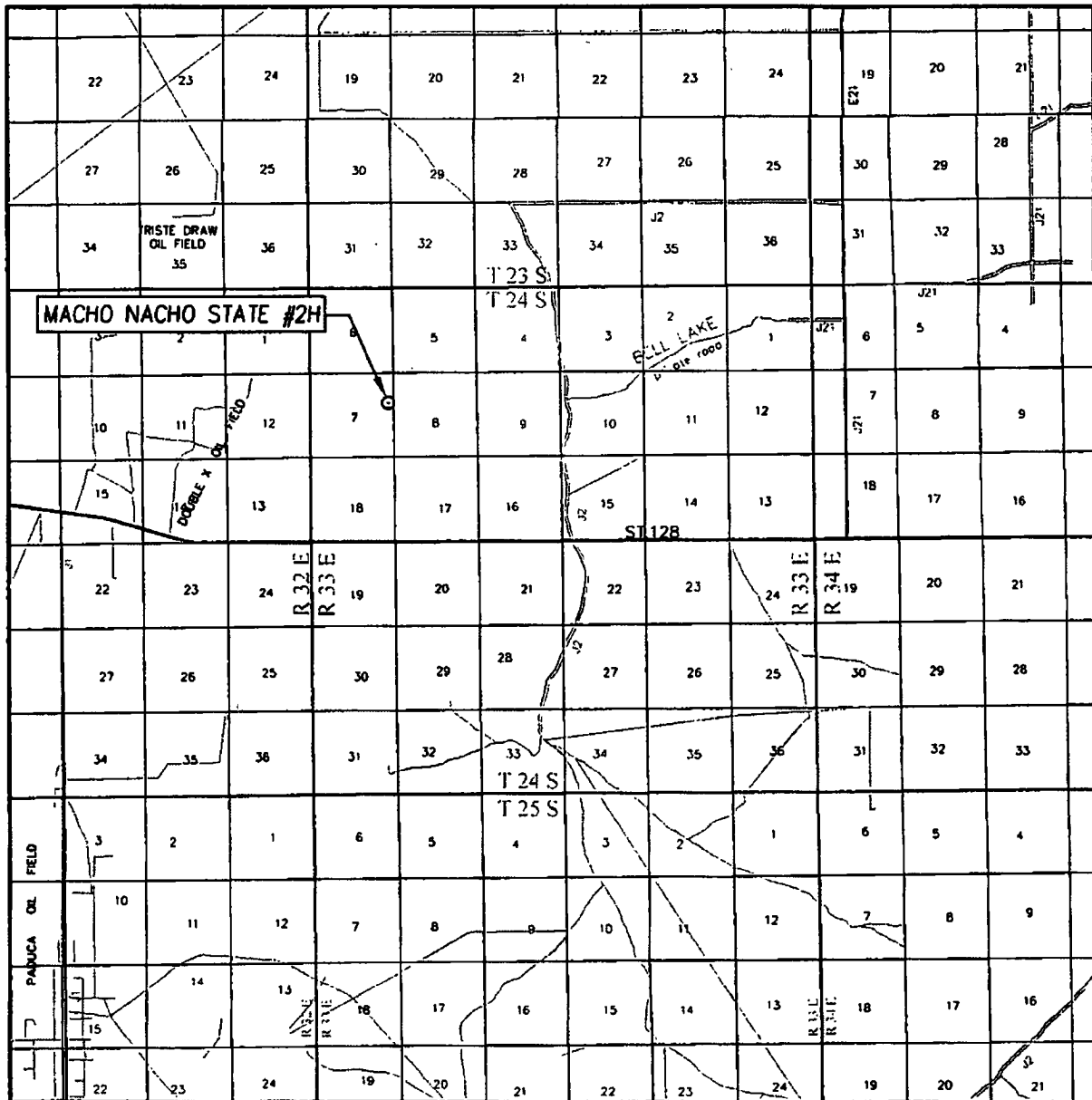
MACHO NACHO STATE #2H WELL
 LOCATED 1870 FEET FROM THE NORTH LINE
 AND 330 FEET FROM THE EAST LINE OF SECTION 7,
 TOWNSHIP 24 SOUTH, RANGE 33 EAST, N.M.P.M.,
 LEA COUNTY, NEW MEXICO

PROVIDING SURVEYING SERVICES
 SINCE 1946
JOHN WEST SURVEYING COMPANY
 412 N. DAL PASO
 HOBBS, N.M. 88240
 (575) 393-3117 www.jwsc.biz

Survey Date: 2/6/12	CAD Date: 2/8/12	Drawn By: DSS
W.O. No.: 12110191	Rev. .	Rel. W.O.:

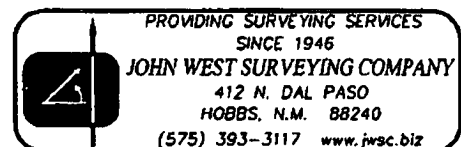
Sheet 1 of 1

VICINITY MAP

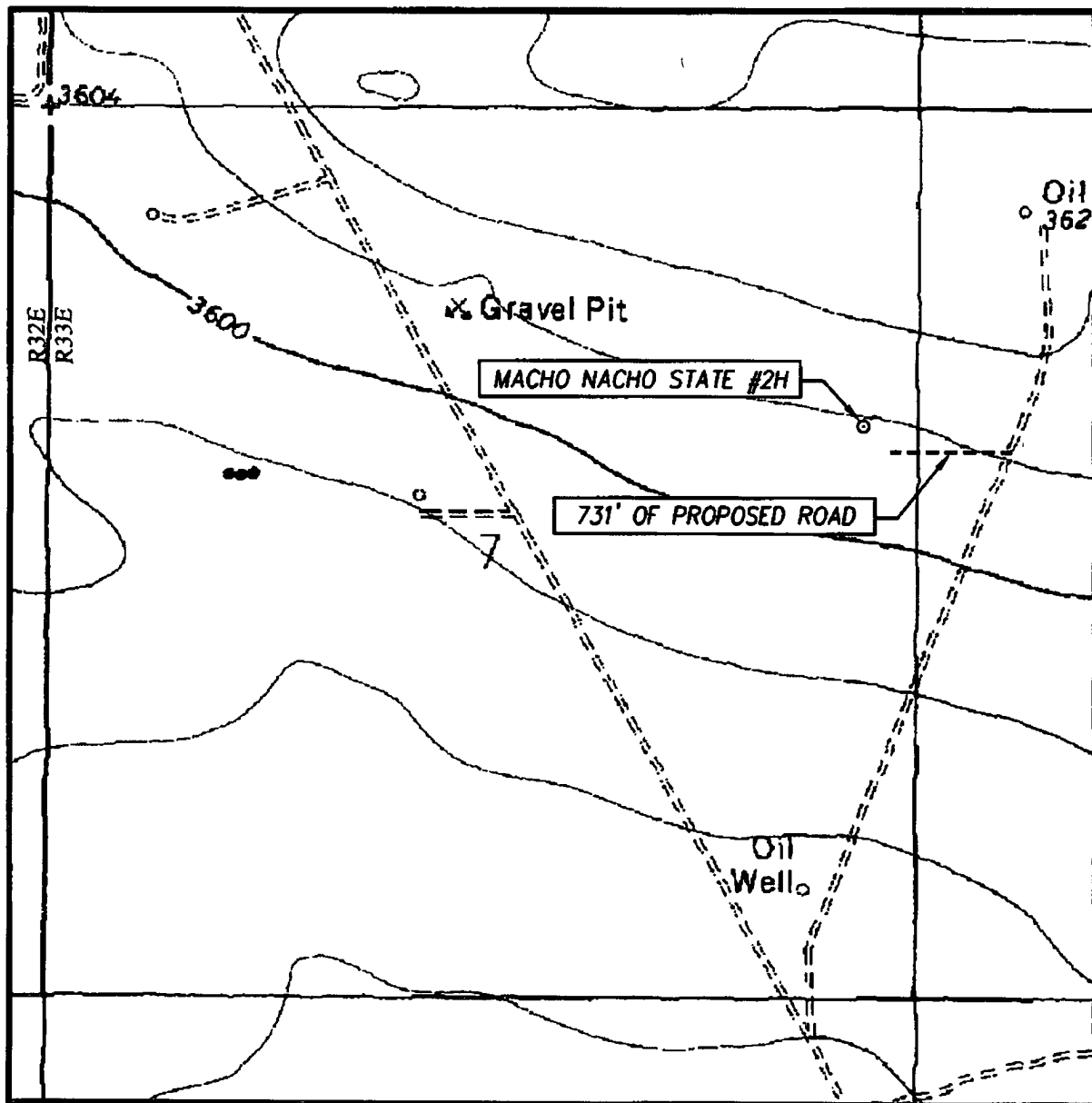


SCALE: 1" = 2 MILES

SEC. 7 TWP. 24-S RGE. 33-E
 SURVEY N.M.P.M.
 COUNTY LEA STATE NEW MEXICO
 DESCRIPTION 1870' FNL & 330' FEL
 ELEVATION 3614'
 OPERATOR COG OPERATING, LLC
 LEASE MACHO NACHO STATE



LOCATION VERIFICATION MAP



SCALE: 1" = 1000'

CONTOUR INTERVAL:
BELL LAKE, N.M. - 10'

SEC. 7 TWP. 24-S RGE. 33-E

SURVEY N.M.P.M.

COUNTY LEA STATE NEW MEXICO

DESCRIPTION 1870' FNL & 330' FEL

ELEVATION 3614'

OPERATOR COG OPERATING, LLC

LEASE MACHO NACHO STATE

U.S.G.S. TOPOGRAPHIC MAP
BELL LAKE, N.M.

