

DISTRICT I
1625 N. FRENCH DR., HOBBS, NM 88240
DISTRICT II
1301 W. GRAND AVENUE, ARTESIA, NM 88210
DISTRICT III
1000 RIO BRAZOS RD., AZTEC, NM 87410
DISTRICT IV
11885 S. ST. FRANCIS DR., SANTA FE, NM 87505

State of New Mexico
Energy, Minerals & Natural Resources Department
OIL CONSERVATION DIVISION
1220 South St. Francis Dr.
Santa Fe, New Mexico 87505

HOBBS OCD

FEB 29 2012

RECEIVED

Form C-102
Revised July 16, 2010
Submit to Appropriate
District Office

☐ AMENDED REPORT

WELL LOCATION AND ACREAGE DEDICATION PLAT

API Number 30-025-40465	Pool Code 61280	Pool Name VACUUM GRAYBORG SAN ALDRES
Property Code 29923	Property Name C.V.U.	Well Number 273
OGRID No 1323	Operator Name CHEVRON USA INC.	Elevation 3990'

Surface Location

UL or lot No.	Section	Township	Range	Lot Idn	Feet from the	North/South line	Feet from the	East/West line	County
H	36	17-S	34-E		2346	NORTH	481	EAST	LEA

Bottom Hole Location If Different From Surface

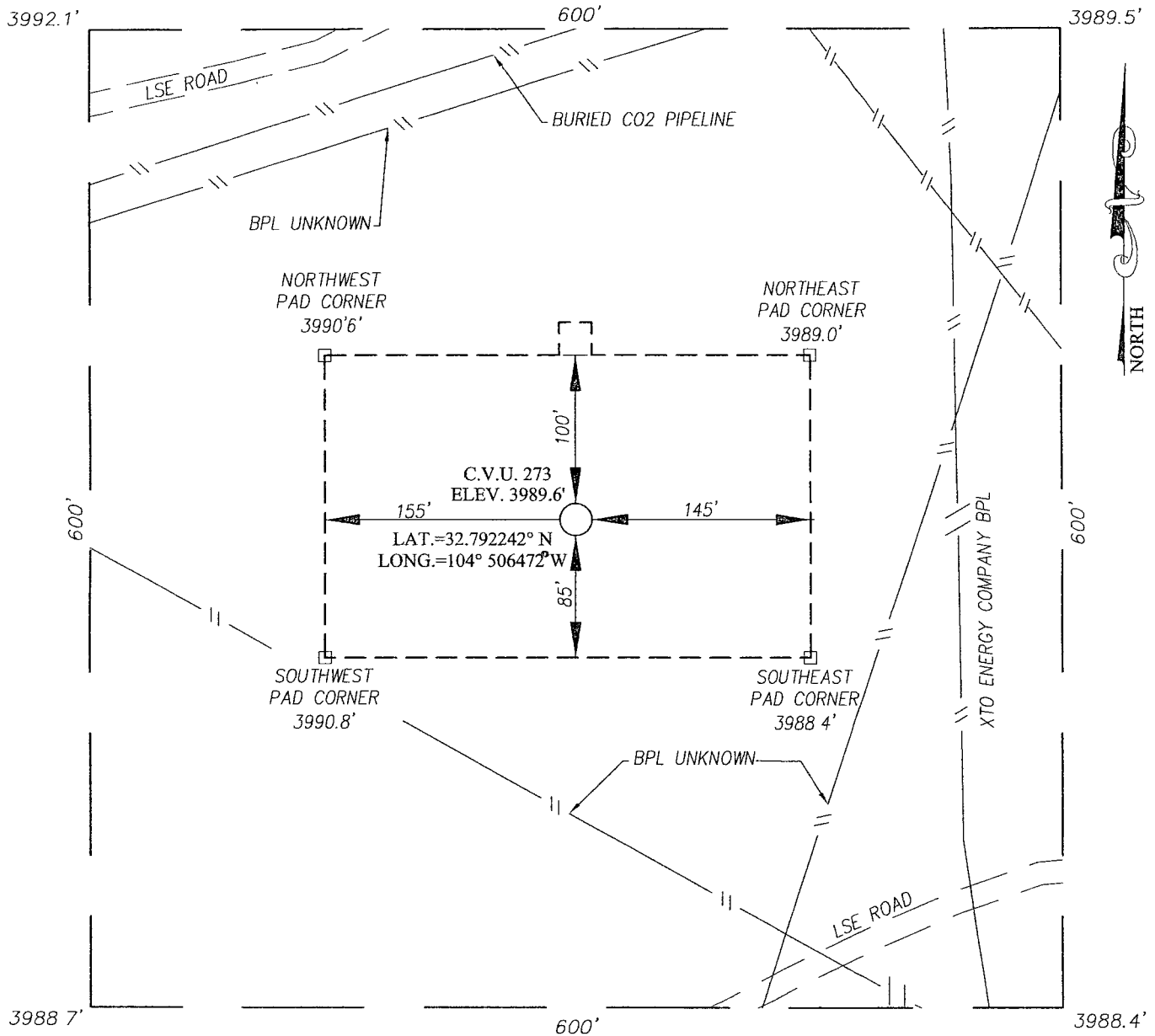
UL or lot No.	Section	Township	Range	Lot Idn	Feet from the	North/South line	Feet from the	East/West line	County
Dedicated Acres 40		Joint or Infill		Consolidation Code		Order No.			

NO ALLOWABLE WILL BE ASSIGNED TO THIS COMPLETION UNTIL ALL INTERESTS HAVE BEEN CONSOLIDATED OR A NON-STANDARD UNIT HAS BEEN APPROVED BY THE DIVISION

<p>GEODETIC COORDINATES NAD 27 NME</p> <p>SURFACE LOCATION Y=652921.8 N X=754098.0 E LAT=32.792242° N LONG.=103° 50' 47.1 W</p> <p>SEE DETAIL</p> <p>2346'</p> <p>481'</p> <p>DETAIL</p> <p>3992 1' 3989 5'</p> <p>600'</p> <p>3988 7' 3988 4'</p>	<p>OPERATOR CERTIFICATION</p> <p>I hereby certify that the information herein is true and complete to the best of my knowledge and belief, and that this organization either owns a working interest or unleased mineral interest in the land including the proposed bottom hole location or has a right to drill this well at this location pursuant to a contract with an owner of such mineral or working interest, or to a voluntary pooling agreement or a compulsory pooling order heretofore entered by the division</p> <p>Signature: <i>Anise Pinkerton</i> Date: <i>2-24-12</i></p> <p>Printed Name: <i>Anise Pinkerton</i></p> <p>E-mail Address: <i>Leakeid@chevron.com</i></p>
	<p>SURVEYOR CERTIFICATION</p> <p>I hereby certify that the well location shown on this plat was plotted from field notes of actual surveys made by me or under my supervision, and that the same is true and correct to the best of my belief</p> <p>Date of Survey: <i>JULY 23, 2011</i></p> <p>Signature & Seal of Professional Surveyor:</p> <p><i>Ronald J. Eidson</i></p> <p>3239</p> <p><i>Ronald J. Eidson</i> 8/18/2011</p> <p>Certificate Number: <i>12641</i></p> <p>CMH JWSC W.O.: 11 11 1243</p>

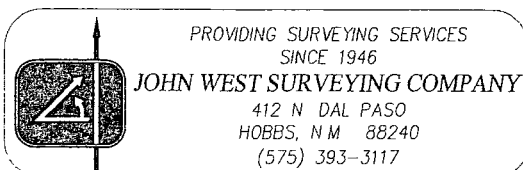
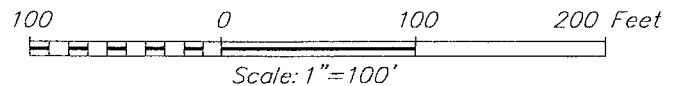
MAR 05 2012

SECTION 36, TOWNSHIP 17 SOUTH, RANGE 34 EAST, N.M.P.M.
LEA COUNTY NEW MEXICO



DIRECTIONS TO LOCATION

FROM THE INTERSECTION OF HIGHWAY CR #50
(BUCKEYE ROAD) AND US HWY #238, GO SOUTH ON
US HWY. #238 0.7 MILE. TURN RIGHT AND GO WEST
200 FEET THE WELL MARKER IS APPROX. 200'
SOUTH

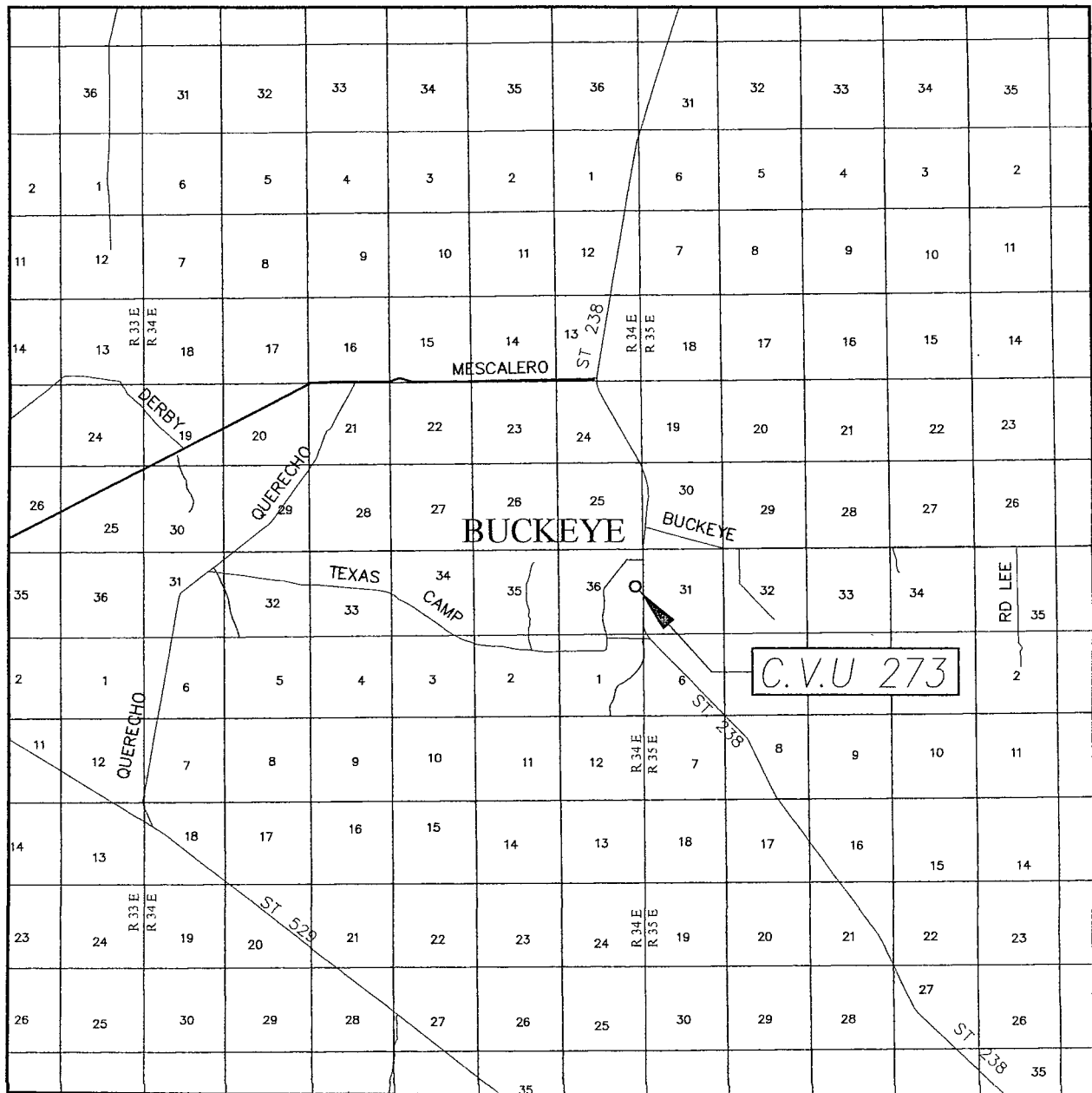


CHEVRON USA INC.

C.V.U. 273
LOCATED 2346 FEET FROM THE NORTH LINE
AND 481 FEET FROM THE EAST LINE OF SECTION 36,
TOWNSHIP 17 SOUTH, RANGE 34 EAST, N.M.P.M.,
LEA COUNTY, NEW MEXICO

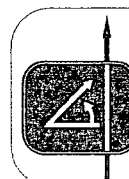
Survey Date: 07/23/11	Sheet 1 of 1 Sheets
W O Number: 11 11.1243	CMH Rev
Date: 08/12/11	Rel W.O.: 11111243 Scale: 1"=100'

VICINITY MAP



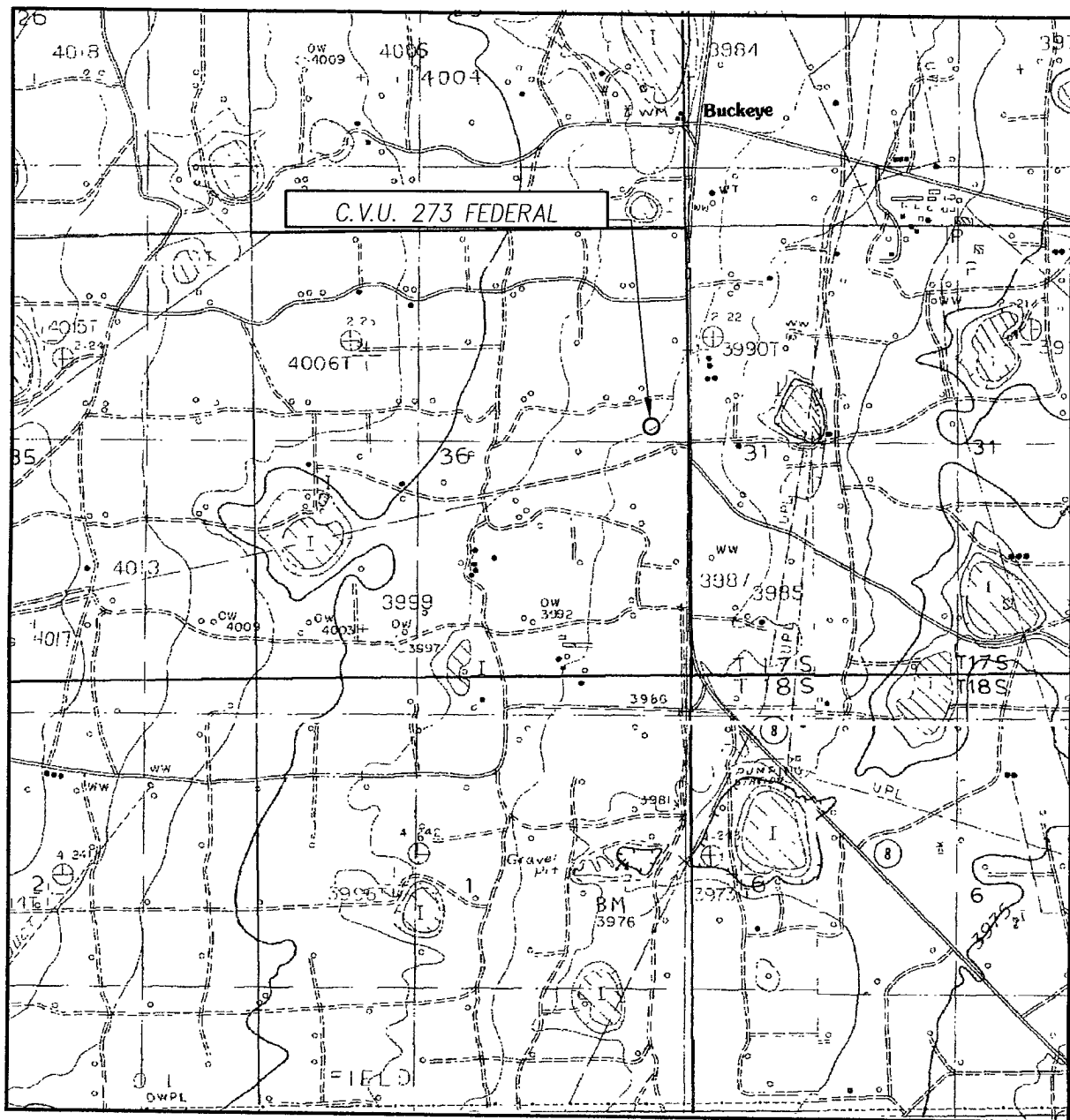
SCALE: 1" = 2 MILES

SEC. 36 TWP. 17-S RGE. 34-E
 SURVEY N.M.P.M.
 COUNTY LEA STATE NEW MEXICO
 DESCRIPTION 2346' FNL & 481' FEL
 ELEVATION 3990'
 OPERATOR CHEVRON U.S.A., INC
 LEASE C.V.U



PROVIDING SURVEYING SERVICES
 SINCE 1946
JOHN WEST SURVEYING COMPANY
 412 N DAL PASO
 HOBBS, N.M. 88240
 (575) 393-3117

LOCATION VERIFICATION MAP



SCALE: 1" = 2000'

CONTOUR INTERVAL:
BUCKEYE, N.M.=10'
SW LOVINGTON, N.M.=10'

SEC. 36 TWP. 17-S RGE. 34-E

SURVEY _____ N.M.P.M.

COUNTY LEA STATE NEW MEXICO

DESCRIPTION 2346' FNL & 481' FEL

ELEVATION 3990'

OPERATOR CHEVRON U.S.A., INC.

LEASE C.V.U. 273 FEDERAL

U.S.G.S. TOPOGRAPHIC MAP
BUCKEYE, NM AND SW LOVINGTON, NM

