

DISTRICT I
1625 N. FRENCH DR., HOBBS, NM 88240
DISTRICT II
1301 W. GRAND AVENUE, ARTESIA, NM 88210
DISTRICT III
1000 RIO BRAZOS RD., AZTEC, NM 87410
DISTRICT IV
11885 S. ST. FRANCIS DR., SANTA FE, NM 87505

State of New Mexico
Energy, Minerals & Natural Resources Department
OIL CONSERVATION DIVISION
1220 South St. Francis Dr.
Santa Fe, New Mexico 87505

Form C-102
Revised July 16, 2010
Submit to Appropriate
District Office

☐ AMENDED REPORT

WELL LOCATION AND ACREAGE DEDICATION PLAT

API Number 30-025-40470	Pool Code 61280	Pool Name VACUUM GRAYBURG SAN ANDRES
Property Code 29923	Property Name CVU	Well Number 366
OGRID No. 4323	Operator Name CHEVRON USA INC	Elevation 3992'

Surface Location

UL or lot No.	Section	Township	Range	Lot Idn	Feet from the	North/South line	Feet from the	East/West line	County
H	36	17-S	34-E		1855	NORTH	855	EAST	LEA

Bottom Hole Location If Different From Surface

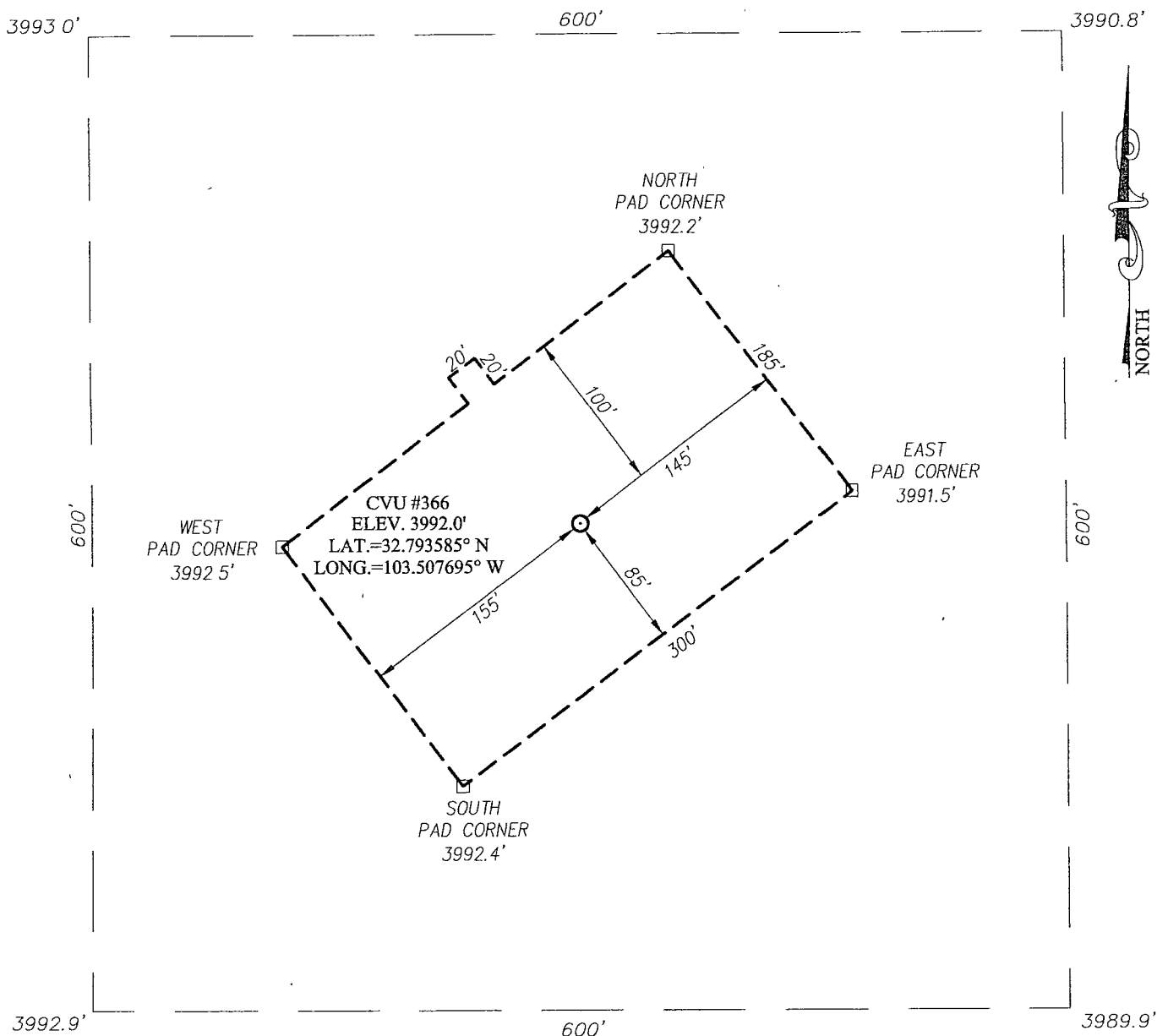
UL or lot No.	Section	Township	Range	Lot Idn	Feet from the	North/South line	Feet from the	East/West line	County
Dedicated Acres 40	Joint or Infill	Consolidation Code	Order No.						

NO ALLOWABLE WILL BE ASSIGNED TO THIS COMPLETION UNTIL ALL INTERESTS HAVE BEEN CONSOLIDATED OR A NON-STANDARD UNIT HAS BEEN APPROVED BY THE DIVISION

<p>GEODETIC COORDINATES NAD 27 NME</p> <p>SURFACE LOCATION Y=653407.5 N X=753718.4 E LAT = 32.793585° N LONG. = 103.507695° W</p> <p>3993.0' 3990.8' 600' 600' 3992.9' 3989.9' DETAIL</p>	<p>1855'</p> <p>855'</p> <p>SEE DETAIL</p>	<p>OPERATOR CERTIFICATION</p> <p>I hereby certify that the information herein is true and complete to the best of my knowledge and belief, and that this organization either owns a working interest or unleased mineral interest in the land including the proposed bottom hole location or has a right to drill this well at this location pursuant to a contract with an owner of such mineral or working interest, or to a voluntary pooling agreement or a compulsory pooling order heretofore entered by the division.</p> <p><i>Denise Pinkerton</i> 2-24-12 Signature Date <i>Denise Pinkerton</i> Printed Name <i>Leakejd@Chevron.com</i> E-mail Address</p>
		<p>SURVEYOR CERTIFICATION</p> <p>I hereby certify that the well location shown on this plat was plotted from field notes of actual surveys made by me or under my supervision, and that the same is true and correct to the best of my belief</p> <p>JUNE 16, 2011</p> <p>Date of Survey</p> <p>Signature & Seal of Professional Surveyor:</p> <p><i>Ronald J. Eidson</i> RONALD J. EIDSON NEW MEXICO 3239 JUN 16 2011 Certificate Number: Gary G. Eidson 12641 Ronald J. Eidson 3239 LA TWSC W.O.: 11.11.1242</p>

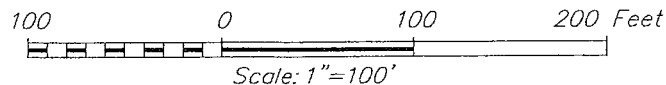
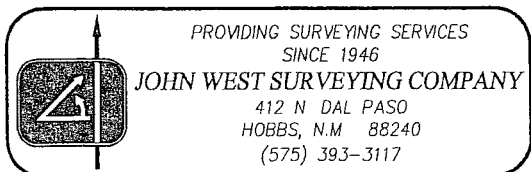
MAR 05 2012

SECTION 36, TOWNSHIP 17 SOUTH, RANGE 34 EAST, N.M.P.M.
LEA COUNTY NEW MEXICO



DIRECTIONS TO LOCATION

FROM THE INTERSECTION OF BUCKEYE ROAD AND HWY. #238, GO SOUTH ON HWY #238 APPROX. 0.6 MILES. TURN RIGHT AND GO WEST APPROX. 0.1 MILE. THE LOCATION STAKE IS APPROX. 250 FEET NORTH OF LEASE ROAD.

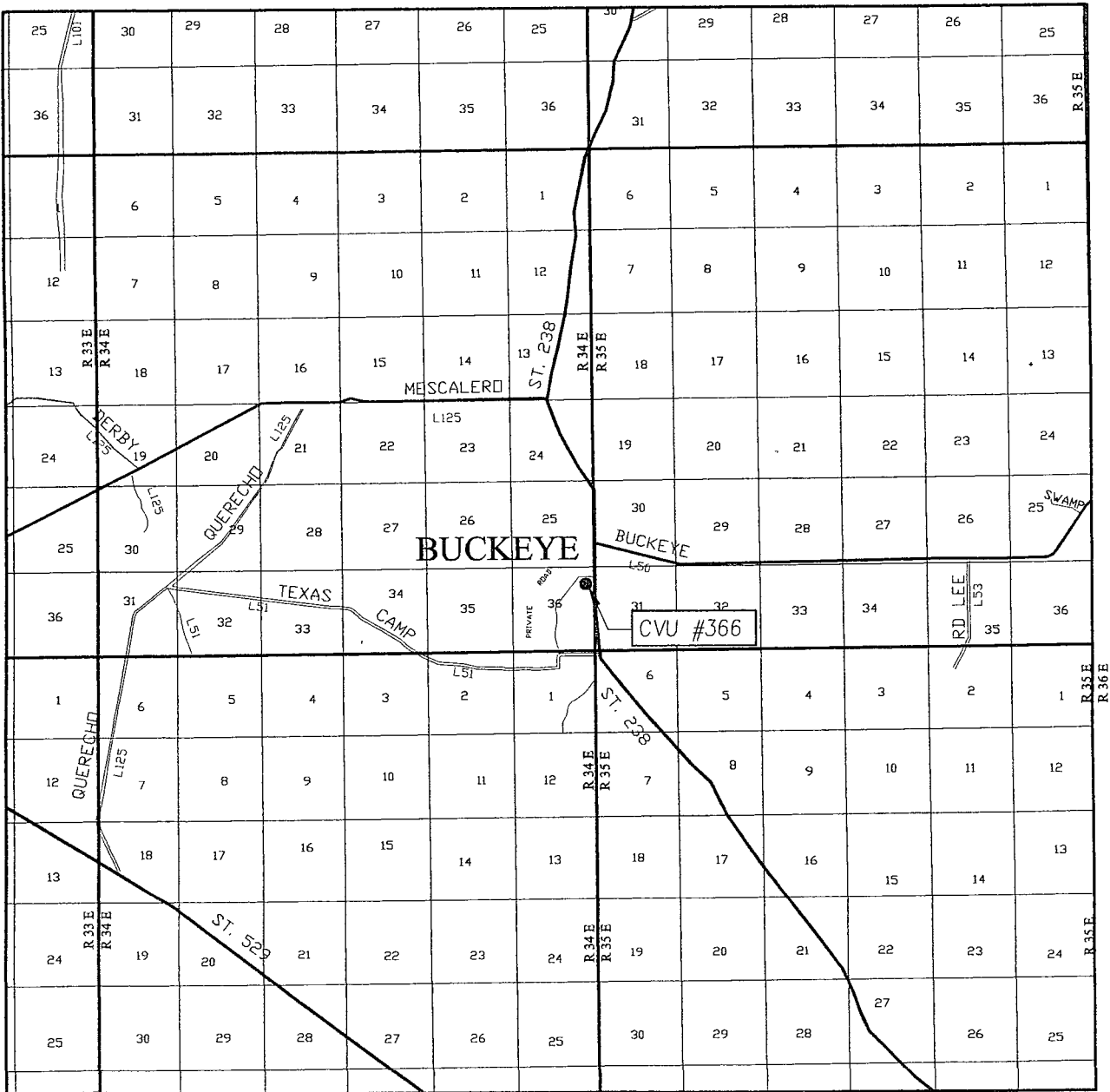


CHEVRON USA INC

CVU #366 WELL
LOCATED 1855 FEET FROM THE NORTH LINE
AND 855 FEET FROM THE EAST LINE OF SECTION 36,
TOWNSHIP 17 SOUTH, RANGE 34 EAST, N.M.P.M.,
LEA COUNTY, NEW MEXICO

Survey Date: 6/16/11	Sheet 1 of 1 Sheets
W.O. Number: 11.11.1242	Dr. By: LA Rev 1:
Date: 7/1/11	Rel W.O.: 11111242 Scale: 1"=100'

VICINITY MAP



SCALE: 1" = 2 MILES

SEC. 36 TWP. 17-S RGE. 34-E

SURVEY N M P.M.

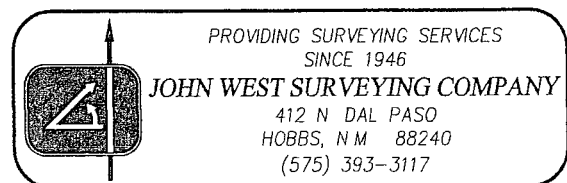
COUNTY LEA STATE NEW MEXICO

DESCRIPTION 1855' FNL & 855' FEL

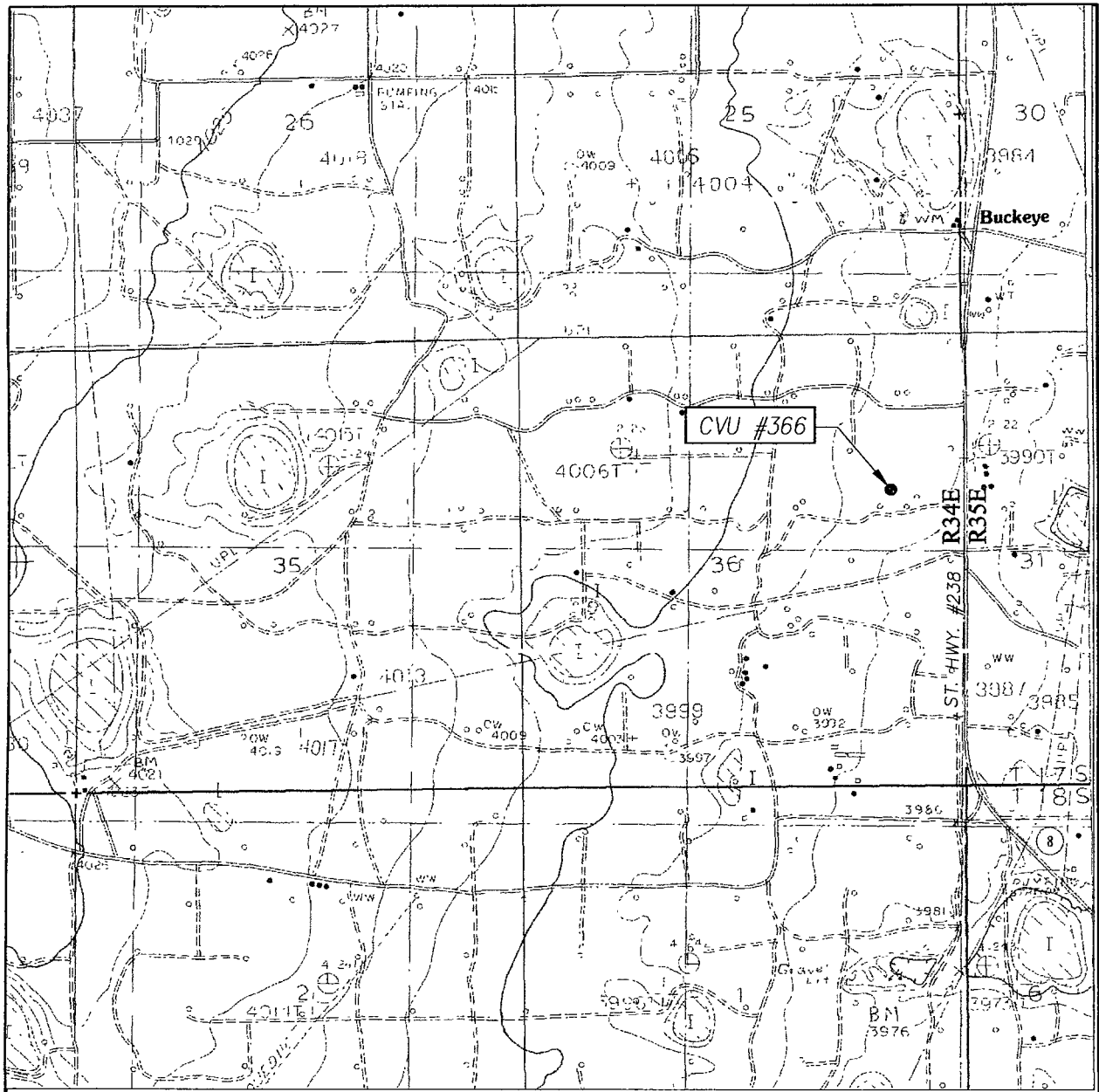
ELEVATION 3992'

OPERATOR CHEVRON USA INC

LEASE CVU



LOCATION VERIFICATION MAP



SCALE: 1" = 2000'

CONTOUR INTERVAL:
BUCKEYE, N.M. - 5'

SEC. 36 TWP. 17-S RGE. 34-E

SURVEY N.M.P.M.

COUNTY LEA STATE NEW MEXICO

DESCRIPTION 1855' FNL & 855' FEL

ELEVATION 3992'

OPERATOR CHEVRON USA INC

LEASE CVU

U.S.G.S. TOPOGRAPHIC MAP
BUCKEYE, N.M.

