

30-025-0

Hydrogen Sulfide Drilling Operations Plan  
Hallertau 4 Federal No. 4H  
Cimarex Energy Co. of Colorado  
Unit A, Section 4  
T26S-R32E; Lea County, NM

- 1 All Company and Contract personnel admitted on location must be trained by a qualified H<sub>2</sub>S safety instructor to the following:
  - A. Characteristics of H<sub>2</sub>S
  - B. Physical effects and hazards
  - C. Proper use of safety equipment and life support systems.
  - D. Principle and operation of H<sub>2</sub>S detectors, warning system and briefing areas.
  - E. Evacuation procedure, routes and first aid.
  - F. Proper use of 30 minute pressure demand air pack.
- 2 H<sub>2</sub>S Detection and Alarm Systems:
  - A. H<sub>2</sub>S detectors and audio alarm system to be located at bell nipple, end of flow line (mud pit) and on derrick floor or doghouse.
- 3 Windsock and/or wind streamers:
  - A. Windsock at mudpit area should be high enough to be visible.
  - B. Windsock at briefing area should be high enough to be visible.
- 4 Condition Flags and Signs:
  - A. Warning sign on access road to location.
  - B. Flags to be displayed on sign at entrance to location. Green flag indicates normal safe condition. Yellow flag indicates potential pressure and danger. Red flag indicates danger (H<sub>2</sub>S present in dangerous concentration). Only emergency personnel admitted to location.
- 5 Well control equipment:
  - A. See exhibit "E"
- 6 Communication:
  - A. While working under masks chalkboards will be used for communication.
  - B. Hand signals will be used where chalk board is inappropriate.
  - C. Two way radio will be used to communicate off location in case of emergency help is required. In most cases cellular telephones will be available at most drilling foreman's trailer or living quarters.
- 7 Drillstem Testing:

No DSTs or cores are planned at this time.
- 8 Drilling contractor supervisor will be required to be familiar with the effects H<sub>2</sub>S has on tubular goods and other mechanical equipment.
- 9 If H<sub>2</sub>S is encountered, mud system will be altered if necessary to maintain control of formation. A mud gas separator will be brought into service along with H<sub>2</sub>S scavengers if necessary.

H<sub>2</sub>S Contingency Plan  
Hallertau 4 Federal No. 4H  
Cimarex Energy Co. of Colorado  
Unit A, Section 4  
T26S-R32E; Lea County, NM

HOBBS OCD

FEB 29 2012

RECEIVED

### Emergency Procedures

In the event of a release of gas containing H<sub>2</sub>S, the first responder(s) must:

- ★ Isolate the area and prevent entry by other persons into the 100 ppm ROE.
- ★ Evacuate any public places encompassed by the 100 ppm ROE.
- ★ Be equipped with H<sub>2</sub>S monitors and air packs in order to control the release.
- ★ Use the "buddy system" to ensure no injuries occur during the response.
- ★ Take precautions to avoid personal injury during this operation.
- ★ Contact operator and/or local officials to aid in operation. See list of phone numbers attached.
- ★ Have received training in the:
  - ◆ Detection of H<sub>2</sub>S, and
  - ◆ Measures for protection against the gas,
  - ◆ Equipment used for protection and emergency response.

### Ignition of Gas Source

Should control of the well be considered lost and ignition considered, take care to protect against exposure to Sulfur Dioxide (SO<sub>2</sub>). Intentional ignition must be coordinated with the NMOCDC and local officials. Additionally, the NM State Police may become involved. NM State Police shall be the Incident Command on scene of any major release. Take care to protect downwind whenever there is an ignition of the gas.

### Characteristics of H<sub>2</sub>S and SO<sub>2</sub>

Common Name	Chemical Formula	Specific Gravity	Threshold Limit	Hazardous Limit	Lethal Concentration
Hydrogen Sulfide	H <sub>2</sub> S	1.189 Air=1	10 ppm	100 ppm/hr	600 ppm
Sulfur Dioxide	SO <sub>2</sub>	2.21 Air=1	2 ppm	N/A	1000 ppm

### Contacting Authorities

Cimarex Energy Co. of Colorado's personnel must liaise with local and state agencies to ensure a proper response to a major release. Additionally, the OCD must be notified of the release as soon as possible but no later than 4 hours. Agencies will ask for information such as type and volume of release, wind direction, location of release, etc. Be prepared with all information available including directions to site. The following call list of essential and potential responders has been prepared for use during a release. Cimarex Energy Co. of Colorado's response must be in coordination with the State of New Mexico's "Hazardous Materials Emergency Response Plan" (HMER).

H<sub>2</sub>S Contingency Plan Emergency Contacts  
**Hallertau 4 Federal No. 4H**  
 Cimarex Energy Co. of Colorado  
 Unit A, Section 4  
 T26S-R32E; Lea County, NM

**Company Office**

Cimarex Energy Co. of Colorado	800-969-4789
Co. Office and After-Hours Menu	

**Key Personnel**

Name	Title	Office	Mobile
Doug Park	Drilling Manager	432-620-1934	972-333-1407
Dee Smith	Drilling Super	432-620-1933	972-882-1010
Jim Evans	Drilling Super	432-620-1929	972-465-0564
Roy Shirley	Field Super		432-634-2136

**Artesia**

Ambulance	911
State Police	575-746-2703
City Police	575-746-2703
Sheriff's Office	575-746-9888
<b>Fire Department</b>	<b>575-746-2701</b>
Local Emergency Planning Committee	575-746-2122
New Mexico Oil Conservation Division	575-748-1283

**Carlsbad**

Ambulance	911
State Police	575-885-3137
City Police	575-885-2111
Sheriff's Office	575-887-7551
<b>Fire Department</b>	<b>575-887-3798</b>
Local Emergency Planning Committee	575-887-6544
US Bureau of Land Management	575-887-6544

**Santa Fe**

New Mexico Emergency Response Commission (Santa Fe)	505-476-9600
New Mexico Emergency Response Commission (Santa Fe) 24 Hrs	505-827-9126
New Mexico State Emergency Operations Center	505-476-9635

**National**

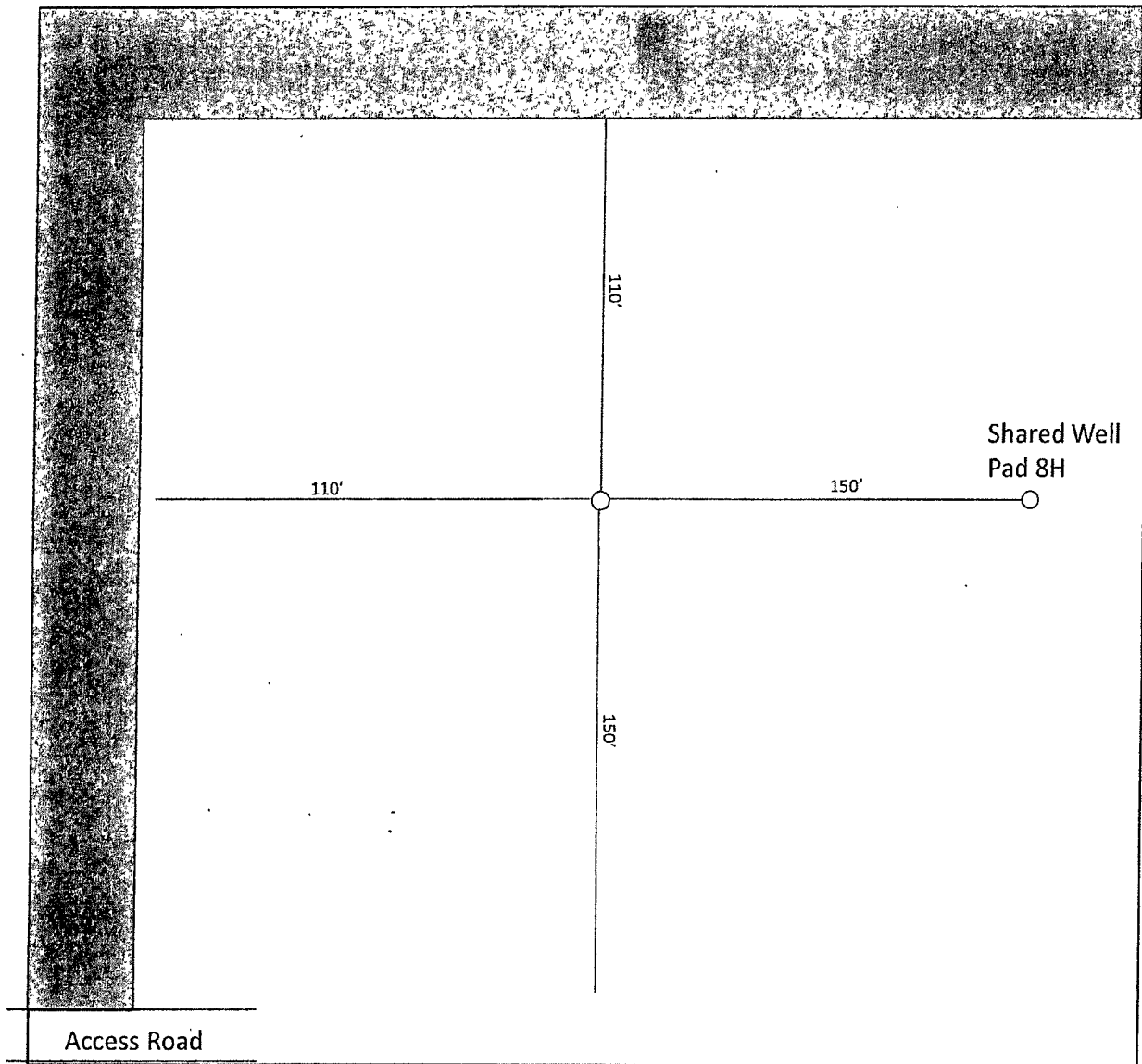
National Emergency Response Center (Washington, D.C.)	800-424-8802
---	--------------

**Medical**

Flight for Life - 4000 24th St.; Lubbock, TX	806-743-9911
Aerocare - R3, Box 49F; Lubbock, TX	806-747-8923
Med Flight Air Amb - 2301 Yale Blvd S.E., #D3; Albuquerque, NM	505-842-4433
SB Air Med Service - 2505 Clark Carr Loop S.E.; Albuquerque, NM	505-842-4949

**Other**

Boots & Coots IWC	800-256-9688	or	281-931-8884
Cudd Pressure Control	432-699-0139	or	432-563-3356
Halliburton	575-746-2757		
B.J. Services	575-746-3569		



1" = 50'

Exhibit D-1  
 Production Facilities Layout Diagram  
**Hallertau 4 Federal No. 4H**  
 Cimarex Energy Co. of Colorado  
 4-26S-32E  
 SHL 330 FNL & 660 FEL  
 BHL 330 FSL & 970 FEL  
 Lea County, NM

