

HOBBS OCD

12-19

MAR 06 2012

OCD-HOBBS

Form 3160-3
(April 2004)

RECEIVED

UNITED STATES
DEPARTMENT OF THE INTERIOR
BUREAU OF LAND MANAGEMENT

Split Estate

FORM APPROVED
OMB No. 1004-0137
Expires March 31, 2007

APPLICATION FOR PERMIT TO DRILL OR REENTER

1a. Type of work: <input checked="" type="checkbox"/> DRILL <input type="checkbox"/> REENTER		15. Lease Serial No. NAMEC-0031741A	
1b. Type of Well: <input checked="" type="checkbox"/> Oil Well <input type="checkbox"/> Gas Well <input type="checkbox"/> Other <input type="checkbox"/> Single Zone <input type="checkbox"/> Multiple Zone		6. If Indian, Allottee or Tribe Name	
2. Name of Operator APACHE CORPORATION		7. If Unit or CA Agreement, Name and No. WBDU NM120042X	
3a. Address 303 VETERANS AIRPARK LN #3000 MIDLAND, TX 79705		8. Lease Name and Well No. <37346> WEST BLINEBRY DRINKARD UNIT #105	
3b. Phone No. (include area code) 432-818-1167		9. API Well No. 30-025-40480	
4. Location of Well (Report location clearly and in accordance with any State requirements.) At surface 330' FNL & 2550' FWL At proposed prod. zone SAME		10. Field and Pool, or Exploratory EUNICE; BLI-TU-DRI, N. <22900>	
14. Distance in miles and direction from nearest town or post office* APPROX 3 MILES NORTH OF EUNICE, NM		11. Sec, T. R. M. or Blk. and Survey or Area UL: C SEC: 8 T21S R37E	
15. Distance from proposed* location to nearest property or lease line, ft. (Also to nearest drig. unit line, if any) 300'	16. No. of acres in lease 958 ACRES	17. Spacing Unit dedicated to this well 40 ACRES	
18. Distance from proposed location* to nearest well, drilling, completed, applied for, on this lease, ft. ~350'	19. Proposed Depth 7200'	20. BLM/BIA Bond No. on file BLM-CO-1463 NATIONWIDE / NMB000736	
21. Elevations (Show whether DF, KDB, RT, GL, etc.) 3520'	22. Approximate date work will start* As soon as APD Approved	23. Estimated duration 8 - 10 DAYS	
24. Attachments			

The following, completed in accordance with the requirements of Onshore Oil and Gas Order No.1, shall be attached to this form:

- | | |
|---|--|
| 1. Well plat certified by a registered surveyor. | 4. Bond to cover the operations unless covered by an existing bond on file (see Item 20 above). |
| 2. A Drilling Plan. | 5. Operator certification |
| 3. A Surface Use Plan (if the location is on National Forest System Lands, the SUPO shall be filed with the appropriate Forest Service Office). | 6. Such other site specific information and/or plans as may be required by the authorized officer. |

25. Signature <i>Sorina L. Flores</i>	Name (Printed/Typed) SORINA L. FLORES	Date 9/29/11
Title SPV. DRLG. SERVICES		

Approved by (Signature) /s/ Don Peterson	Name (Printed/Typed) MAR 01 2012
Title FIELD MANAGER	Office CARLSBAD FIELD OFFICE

Application approval does not warrant or certify that the applicant holds legal or equitable title to those rights in the subject lease which would entitle the applicant to conduct operations thereon.

Conditions of approval, if any, are attached.

APPROVAL FOR TWO YEARS

Title 18 U.S.C. Section 1001 and Title 43 U.S.C. Section 1212, make it a crime for any person knowingly and willfully to make to any department or agency of the United States any false, fictitious or fraudulent statements or representations as to any matter within its jurisdiction.

*(Instructions on page 2)

Capitan Controlled Water Basin

K8 3/01/12

SEE ATTACHED
CONDITIONApproval Subject to General Requirements
& Special Stipulations Attached

MAR 08 2012

DRILLING PLAN: BLM COMPLIANCE

(Supplement to BLM 3160-3)

HOBBS OCD**APACHE CORPORATION (OGRID: 873)****MAR 06 2012**

West Blinbry Drinkard Unit #105 Lease #: NMLC-0031741A Projected TD: 7200' GL: 3520'
 330' FNL & 2550' FWL, UL: C SEC: 8 T21S R37E LEA COUNTY, NM

RECEIVED

- GEOLOGIC NAME OF SURFACE FORMATION:** Permian w/quaternary alluvium & other superficial deposits.
- ESTIMATED TOPS OF GEOLOGICAL MARKERS & DEPTHS OF ANTICIPATED FRESH WATER, OIL OR GAS:**

FORMATION	WELL DEPTH	WATER/OIL/GAS
Quaternary Alluvials	Surf	
Rustler	1307'	
Salt Top	1340'	
Salt Bottom	2550'	
Yates	2683'	
Queen	3479'	
Grayburg	3763'	
San Andres	4055'	
Glorieta	5299'	
Yeso	5730'	Oil
ABO	6859'	
TD	7200'	
Avg Depth to Ground Water:	~75'	

All fresh water & prospectively valuable minerals, as described by BLM, encountered during drilling, will be recorded by depth and adequately protected. All oil & gas shows within zones of correlative rights will be tested to determine commercial potential.

- CASING PROGRAM:** All casing is new & API approved

See col 4

HOLE SIZE	DEPTH	OD CSG	WEIGHT	COLLAR	GRADE	COLLAPSE	BURST	TENSION
12-1/4"	0' - 1325' / 1380'	8-5/8"	24#	STC	J-55	2.3	4.9	7.4
7-7/8"	0' - 1000'	5-1/2"	17#	LTC	L-80	12.1	3.2	2.8
7-7/8"	1000' - 7200'	5-1/2"	17#	LTC	J-55	1.3	1.4	2.3

- CEMENT PROGRAM:**

- 8-5/8" Surface:** Run & set 8-5/8" 24# J-55 STC csg to 1325'. Cement with:

Lead: 400 sx Class C w/2% CaCl, 0.25% CF, 3#/sx LCM-1, 0.005 gps FP-6L, 4% Bentonite (13.5 ppg, 1.75 yld)
 Comp Strengths: **12 hr** - 417 psi **24 hr** - 700 psi **72 hr** - 1278 psi

Tail: 300 sx Class C w/1% CaCl, 0.13 #/sx CF, 0.005 gps FP-6L (14.8 ppg, 1.34 yld)
 Compressive Strengths: **12 hr** - 875psi **72hr** - 1466 psi

***100% excess cmt; Cmt to surf ***

- 5-1/2" Production:** Run & set 5-1/2" 17# L-80/J-55 LTC csg to 7200'. Cement with:

Lead: 650 sx (50:50) Poz (Fly ash): Class C w/5% NaCl, 0.13 #/sx CF, 3 #/sx LCM-1, 0.5% FL-52, 0.005 gps FP-6L, 10% Bentonite, 0.2% Sodium Metasilicate (11.8 ppg, 2.46 yld)
 Compressive Strengths: **12 hr** - 100 psi **24 hr** - 200 psi **72 hr** - 550 psi

Tail: 360 sx (50:50) Poz (Fly ash): Class C w/5% NaCl, 0.13#/sx CF, 0.2% CD-32, 3 #/sx LCM-1, 0.45% FL-52, 0.005 gps FP-6L, 2% Bentonite, 0.1% Sodium Metasilicate (14.2 ppg, 1.3 yld)
 Compressive Strengths: **12 hr** - 500 psi **24 hr** - 1600 psi **72hr** - 2250 psi

*** 55% excess cmt; Cmt to surf ***

**** The above cmt volumes could be revised pending caliper measurement from open hole logs. TOC is designed to reach surface on Surface and Production. The above slurry design may change, but will meet BLM specifications. All slurries will be tested prior to loading to confirm thickening times & a lab report furnished to Apache. Fluid loss will be tested & reported on slurries with fluid loss additives. Lab test report will be furnished prior to pumping cement.**

5. PROPOSED CONTROL EQUIPMENT

"EXHIBIT 3" shows an 11" 3M psi WP BOP consisting of an annular bag type preventer, middle blind rams, bottom pipe rams. The BOP will be nipped up on the 8-5/8" csg and utilized continuously until total depth is reached. The BOP will be tested at 2000 psi, maximum surface pressure is not expected to exceed 2M psi, BHP is calculated to be approximately 3124 psi. *All BOP's and associated equipment will be tested as per BLM *Drilling Operations Order #2*. The BOP will be operated and checked each 24 hr period & the blind rams will be operated & checked when the drill pipe is out of the hole. Functional tests will be documented on the daily driller's log. "EXHIBIT 3/3A" also shows a 3M psi choke manifold with a 4" panic line. Full opening stabbing valve & Kelly cock will be on derrick floor in case of need. No abnormal pressures or temperatures are expected in this well. No nearby wells have encountered any problems.

6. PROPOSED MUD CIRCULATION SYSTEM: (Closed Loop System)

INTERVAL	MW (ppg)	VISC (sec/qt)	FLUID LOSS (cc)	MUD TYPE
0' - 1325' / 360	8.4 - 8.6	28 - 30	NC	Water
1325' to 5600'	10	29 - 32	NC	Brine
5600' - TD	10	29 - 32	NC	Cut Brine

**** The necessary mud products for weight addition and fluid loss control will be on location at all times. In order to run open hole logs & casing, the above mud properties may have to be altered to meet these needs.**

7. AUXILIARY WELL CONTROL EQUIPMENT / MONITORING EQUIPMENT:

11" x 3000 psi Double BOP/Blind & pipe ram (2M BOP if available)
4-1/2" x 3000 psi Kelly valve
11" x 3000 psi mud cross - H2S detector on production hole
Gate-type safety valve 3" choke line from BOP to manifold
2" adjustable chokes - 4" panic line

8. LOGGING, CORING & TESTING PROGRAM: *See COA*

- A. Open hole logs: Dual Laterolog, MSFL, CNL, Litho-Density, Gamma Ray, Caliper & Sonic from TD back to 8-5/8" csg shoe.
- B. Run CNL, Gamma Ray from 8-5/8" csg shoe back to surface.
- C. No cores, DST's or mud logger are planned at this time.

9. POTENTIAL HAZARDS:

No abnormal pressures or temperatures are anticipated. In the event abnormal pressures are encountered, however, the proposed mud program will be modified to increase the mud-weight. There is known presence of H₂S in this area. If H₂S is encountered the operator will comply with the provisions of *Onshore Oil & Gas Order No. 6*. No lost circulation is expected to occur. All personnel will be familiar with all aspects of safe operation of equipment being used to drill this well. Estimated BHP: 3124 psi and estimated BHT: 115°.

10. ANTICIPATED STARTING DATE AND DURATION OF OPERATIONS:

Road and location construction will begin after Santa Fe & BLM has approved APD. Anticipated spud date will be as soon after Santa Fe and BLM approval and as soon as rig will be available. Move in operations and drilling is expected to take 8 - 10 days. If production casing is run then an additional 90 days will be needed to complete well and construct surface facilities and/or lay flow lines in order to place well on production.

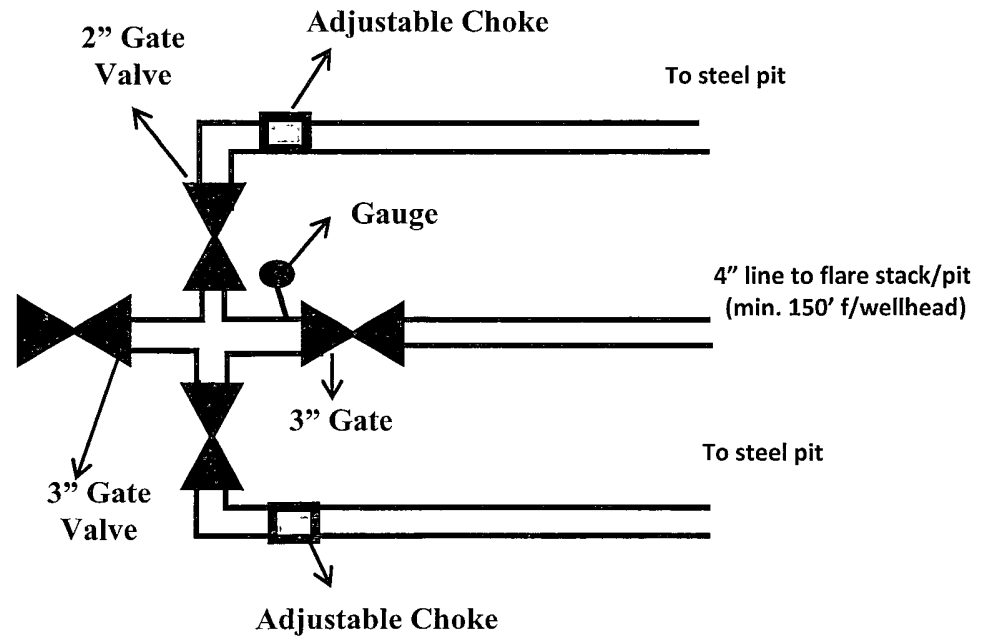
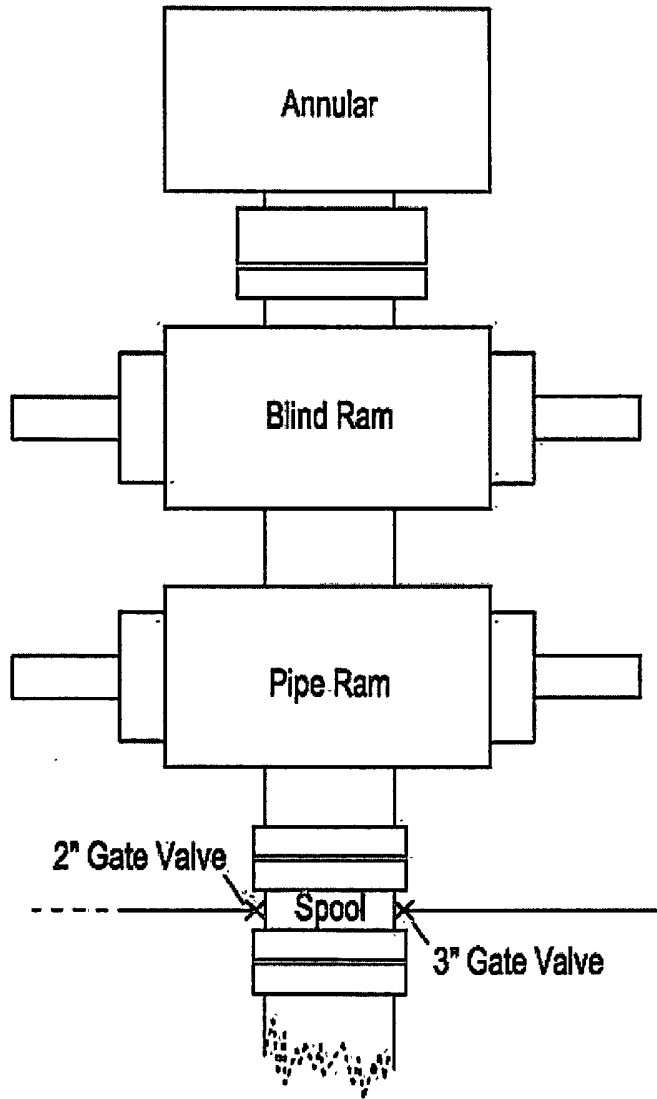
11. OTHER FACETS OF OPERATION:

After running csg, cased hole Gamma Ray, Neutron Collar logs will be run from TD back to all possible productive zones. The Eunice; Blin-Tu-Dri, North formation will be perforated and stimulated in order to establish production. The well will be swab tested & potentialized as an oil well.

3M psi BOPE & Choke Manifold

Exhibit 3

All valve & lines on choke manifold are 2" unless noted.
Exact manifold configuration may vary



WELLSITE / RIG LAYOUT
EBDU #105
Exhibit 5

