

District I  
1625 N. French Dr., Hobbs, NM 88240  
District II  
1301 W. Grand Avenue, Artesia, NM 88210  
District III  
1000 Rio Brozos Rd., Aztec, NM 87410  
District IV  
1220 S. St. Francis Dr., Santa Fe, NM 87505

State of New Mexico  
Energy, Minerals & Natural Resources Department  
OIL CONSERVATION DIVISION  
1220 South St. Francis Dr.  
Santa Fe, NM 87505

Form C-402  
Revised October 12, 2005  
Submit to Appropriate District Office  
State Lease- 4 Copies  
Fee Lease- 3 Copies

☐ AMENDED REPORT

WELL LOCATION AND ACREAGE DEDICATION RECEIVED

|                                    |   |  |                                 |
|------------------------------------|---|--|---------------------------------|
| API Number<br>30-025- <b>40484</b> | Pool Code<br><b>97900</b>                     | Well Name<br><b>UC, Red Hills; Bone Spring</b> | Well Type<br><b>UPPER SHALE</b> |
| Property Code                      | Property Name<br><b>DIAMOND "31" FED. COM</b> |  | Well Number<br><b>2H</b>        |
| OGRID No<br>7377                   | Operator Name<br><b>EOG RESOURCES, INC.</b>   |  | Elevation<br><b>3500.6'</b>     |

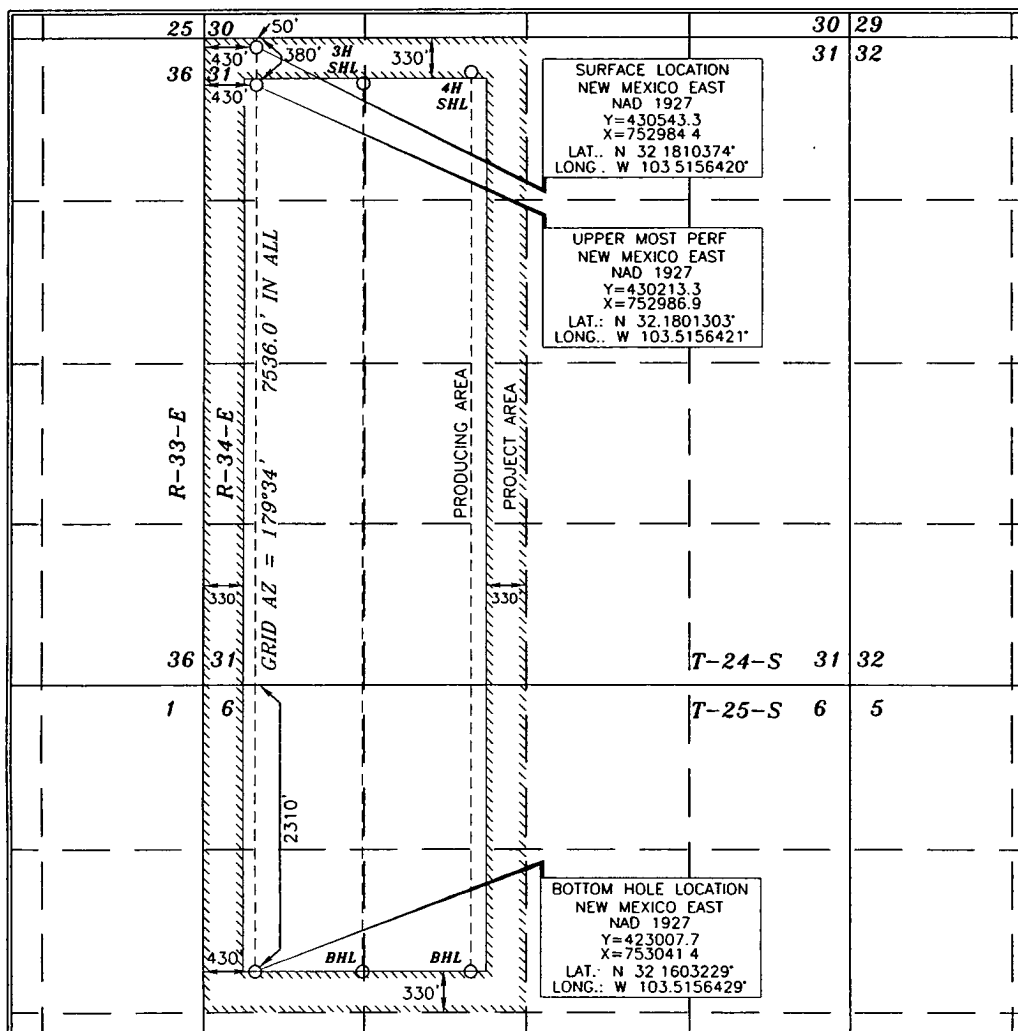
Surface Location

| UL or lot no. | Section   | Township        | Range                    | Lot Idn  | Feet from the | North/South line | Feet from the | East/West line | County     |
|---------------|-----------|-----------------|--------------------------|----------|---------------|------------------|---------------|----------------|------------|
| <b>D</b>      | <b>31</b> | <b>24 SOUTH</b> | <b>34 EAST, N.M.P.M.</b> | <b>1</b> | <b>50'</b>    | <b>NORTH</b>     | <b>430'</b>   | <b>WEST</b>    | <b>LEA</b> |

Bottom Hole Location If Different From Surface

| UL or lot no.                 | Section  | Township        | Range                    | Lot Idn  | Feet from the | North/South line | Feet from the | East/West line | County     |
|-------------------------------|----------|-----------------|--------------------------|----------|---------------|------------------|---------------|----------------|------------|
| <b>E</b>                      | <b>6</b> | <b>25 SOUTH</b> | <b>34 EAST, N.M.P.M.</b> |          | <b>2310'</b>  | <b>NORTH</b>     | <b>430'</b>   | <b>WEST</b>    | <b>LEA</b> |
| Dedicated Acres<br><b>240</b> |          | Joint or Infill | Consolidation Code       | Order No |               |                  |               |                |            |

No allowable will be assigned to this completion until all interests have been consolidated or a non-standard unit has been approved by the division.



OPERATOR CERTIFICATION

I hereby certify that the information contained herein is true and complete to the best of my knowledge and belief, and that this organization either owns a working interest or unleased mineral interest in the land including the proposed bottom hole location or has a right to drill this well at this location pursuant to a contract with an owner of such a mineral or working interest, or to a voluntary pooling agreement or a compulsory pooling order heretofore entered by the division.

*Roger Motley* 10-31-2011  
Signature Date

*Roger Motley*  
Printed Name

SURVEYOR CERTIFICATION

I hereby certify that the well location shown on this plat was plotted from field notes of a recent survey made by me or under my supervision, and that the same is true and correct to the best of my belief.

*Jerry Alford* 9/30/2011  
Date of Survey

Signature and Seal of Professional Surveyor

*Jerry Alford* 9/30/2011  
Certificate Number 15079

WO# 110919WL-a (KA)

MAR 19 2012