

State of New Mexico  
Energy, Minerals and Natural Resources

Form C-103

October 13, 2009

## OIL CONSERVATION DIVISION

1220 South St. Francis Dr.

Santa Fe, NM 87505

WELL API NO. ☒  
30-025-09057

5. Indicate Type of Lease

STATE ☐ FEE ☒

6. State Oil &amp; Gas Lease No.

7. Lease Name or Unit Agreement Name

SEVEN RIVERS QUEEN UNIT

8. Well Number: 009

9. OGRID Number 269324

10. Pool name or Wildcat

EUNICE; SEVEN RIVERS-QUEEN,  
SOUTH

## SUNDRY NOTICES AND REPORTS ON WELLS

(DO NOT USE THIS FORM FOR PROPOSALS TO DRILL OR TO DEEPEN OR PLUG BACK TO A DIFFERENT RESERVOIR. USE "APPLICATION FOR PERMIT" (FORM C-101) FOR SUCH PROPOSALS)

1. Type of Well: Oil Well ☐ Gas Well ☒ Other INJECTION ☒

2. Name of Operator

LINN OPERATING, INC.

3. Address of Operator

600 TRAVIS, SUITE 5100, HOUSTON, TEXAS 77002

4. Well Location

Unit Letter I: 1980 feet from the S line and 660 feet from the E lineSection 27 Township 22S Range 36E NMPM LEA County ✓

11. Elevation (Show whether DR, RKB, RT, GR, etc.)

3517 GR

## 12. Check Appropriate Box to Indicate Nature of Notice, Report or Other Data

## NOTICE OF INTENTION TO:

PERFORM REMEDIAL WORK ☐ PLUG AND ABANDON ☐TEMPORARILY ABANDON ☐ CHANGE PLANS ☐PULL OR ALTER CASING ☐ MULTIPLE COMPL ☐DOWNHOLE COMMINGLE ☐

## SUBSEQUENT REPORT OF:

REMEDIAL WORK ☒ ALTERING CASING ☐COMMENCE DRILLING OPNS. ☐ P AND A ☐CASING/CEMENT JOB ☐OTHER: ☐OTHER: RTI ☒

13. Describe proposed or completed operations. (Clearly state all pertinent details, and give pertinent dates, including estimated date of starting any proposed work). SEE RULE 19.15.7.14 NMAC. For Multiple Completions: Attach wellbore diagram of proposed completion or recompletion.

PLEASE SEE ATTACHMENT

Spud Date:

Rig Release Date:

I hereby certify that the information above is true and complete to the best of my knowledge and belief.

SIGNATURE Terry B. Callahan TITLE: REGULATORY SPECIALIST III DATE MARCH 19, 2012Type or print name TERRY B. CALLAHAN E-mail address: tcallahan@linenergy.com PHONE: 281-840-4272

## For State Use Only

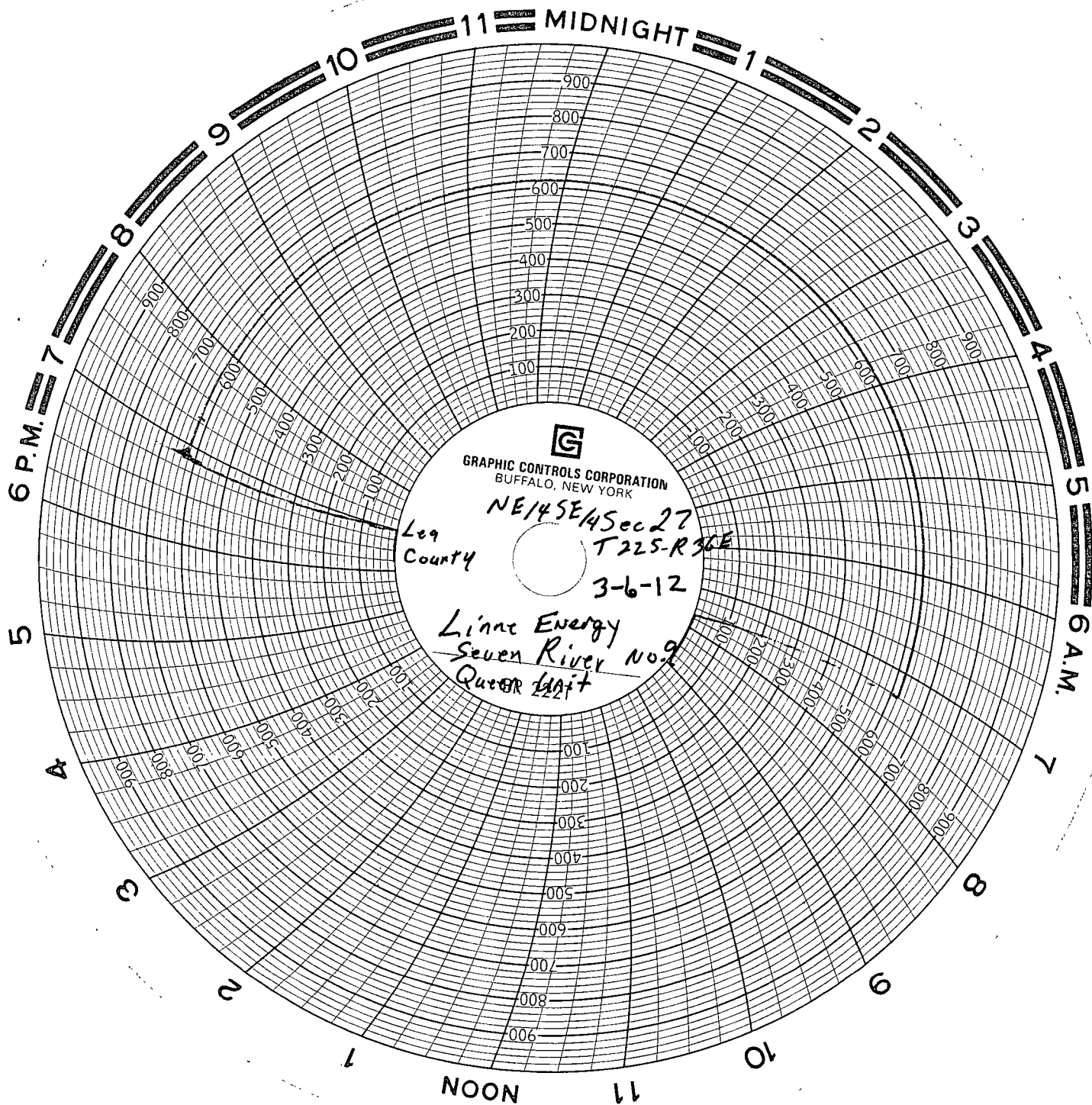
APPROVED BY: [Signature] TITLE STATE MGR DATE 3-22-2012

Conditions of Approval (if any):

MAR 22 2012

SEVEN RIVERS QUEEN UNIT #9  
API #30-025-09057  
ITEM #13 FROM C-103 SUBSEQUENT

- 2/21/2012 RU W/L, mix 1 sx cement for 5 1/2 14# =9' cement,RIH tag @ 3630' GL plug supposed to be @ 3653'. Dumped cement, POOH RD W/L & release. Wrong flange. SWI.
- 2/22/2012 Flange is 8 1/4 National 8 rd modified. NDWH, NUBOP, RU Floor & tongs. PU 5 1/2 packer, start PU 2 3/8 W/S PU 111 jts tagged cement @ 3636' procedure says to set end of liner @ 3641' the composite plug was set to high. Circ well clean, call engineer and advised. Broke circ, tried washing down made 4' to 3640 which still wasn't low enough. TOO H W/11 jts, LD packer. PU 2 7/8 notch collar, TIH W/110 jts PU swivel & jt 111 tag @ 3640' break circulation drilled 1' to 3642 started getting back pieces of the composite plug, drilled 1' to 3642' and fell through went on down to 3644'. PU jt 112 went down to 3676'. Composite plug was actually set @ 3640' not 3653' so when we dump bailed cement we lost more than half out the hole in casing. LD swivel, LD 2 jts SWI.
- 2/23/2012 Bleed down well, TOO H W/110 jts LD notch collar. RU W/L RIH W/4.50 gauge ring to 3676' to make sure old plug was out of the way. POOH, PU plug, RIH correlate logs had to make 5' adjustment. Set plug @ 3660'. POOH PU Dump bailer, mix 1 sx of cement, RIH tag plug dump cement POOH. Wait 2 hrs. PU 4.50 gauge ring RIH tag TOC @ 3651'. POOH RD W/L. PU 5 1/2 packer TIH W/11 jts jts set packer @ 3645'. Pump down tbq to test plug & packer wasn't holding. Release packer, set @ 3649', pressure test and packer still leaking must have bad casing. Pull 4 jts set packer @ 3529'. Pressure test down tbq 500 psi, went to 0 in 3 min. Test again with same results. SWI
- 2/24/2012 TOO H W/107 jts tbq, LD packer. RU casing crew, PU casing shoe & Float collar and it wouldn't make up got to looking and float equipment was for 11.6# not 10.7. Wait on Float equipment. PU float equip, PU 82 jts 4" Flush jt Liner, RD casing crew end of liner @ 3645'. Spot in RU Cementers, Load hole W/5 bbls, pump more FW ahead start cement, Pump 275 sxs (65 bbls) 100 % excess was seeing high pressure. Dropped plug pump 28 bbls F/W started seeing cement back to pit @ 1600 psi. Pumped 15 more bbls @ 1900 psi, bumped plug @ 2500 psi, bleed of float equipment holding good total of 15 bbls of cement back to pit. RD cementers & release. RD floor & tongs, NDBOP land casing. Install WH. SWI.
- 2/27/2012 NUBOP, change out pipe rams. RU Floor & tongs. PU bit sub, 3 1/4 bit TIH W/108 jts tag cement @ 3545'. PU swivel PU jt 109, 110, 111, 4' of jt 112 drill out float equipment, drill out cement tag plug @ 3660'. Circulate hole clean SWI
- 2/28/2012 Break circ, cont drlg to 3676', PU jt 113 push plug on down to 3709'. PU jt 114, cont drilling, trouble plugging off, tried reversing, cont drill in jt 114 down to 3742'. Pull up circulate hole clean LD swivel SWI.
- 2/29/2012 TOO H W/113 jts, LD bit, all 3 cones & shanks were gone. PU 3 1/4 cone buster, TIH W/113 jts. PU swivel & jt 114 break circ, cont. drilling
- 3/1/2012 TIH w/4 jts, PU swivel & jt 116 tag @ 3776'. Circulate clean. LD swivel TOO H LD 116 jts 2 3/8 W/S. SWI
- 3/2/2012 RU tbq tester PU 2 jts tail pipe, PU 4" Arrow set 1 packer W/1 50 profile nipple & T2 on/off tool. Start PU 2 3/8 IPC tbq, PU total of 108 jts. RD floor & tongs, NDBOP land tbq. Circulate 42 bbls packer fluid, set packer @ 3611' KB, EOT @ 3672'. MOCK MIT 580 psi for 30 min, lost 20 psi good test. RDWSU
- 3/6/2012 Witnessed MIT @ 620 psi.



GRAPHIC CONTROLS CORPORATION  
BUFFALO, NEW YORK

NE 1/4 SE 1/4 Sec 27

T 225-R 36E

3-6-12

Lea  
County

Linne Energy  
Seven River No. 9  
Quarter Unit

March 6, 2012

Crain Hot Oil

Home Studio

