

District I
1625 N. French Dr., Hobbs, NM 88240
District II
1301 W. Grand Avenue, Artesia, NM 88210
District III
1000 Rio Brazos Rd., Aztec, NM 87410
District IV
1220 S. St. Francis Dr., Santa Fe, NM 87505

State of New Mexico
Energy, Minerals & Natural Resources Department
OIL CONSERVATION DIVISION
1220 South St. Francis Dr.
Santa Fe, NM 87505

Form C-102
Revised October 12, 2005
Submit to Appropriate District Office
State Lease- 4 Copies
Fee Lease- 3 Copies
☐ AMENDED REPORT

WELL LOCATION AND ACREAGE DEDICATION PLAT

API Number 30-025-05492	Pool Code 31920	Pool Name HOBBS; GRAYBURG-SAN ANDRES
Property Code 19520	Property Name NORTH HOBBS G/SA UNIT	Well Number 431
OGRID No. 157984	Operator Name OCCIDENTAL PERMIAN LTD.	Elevation 3658.6'

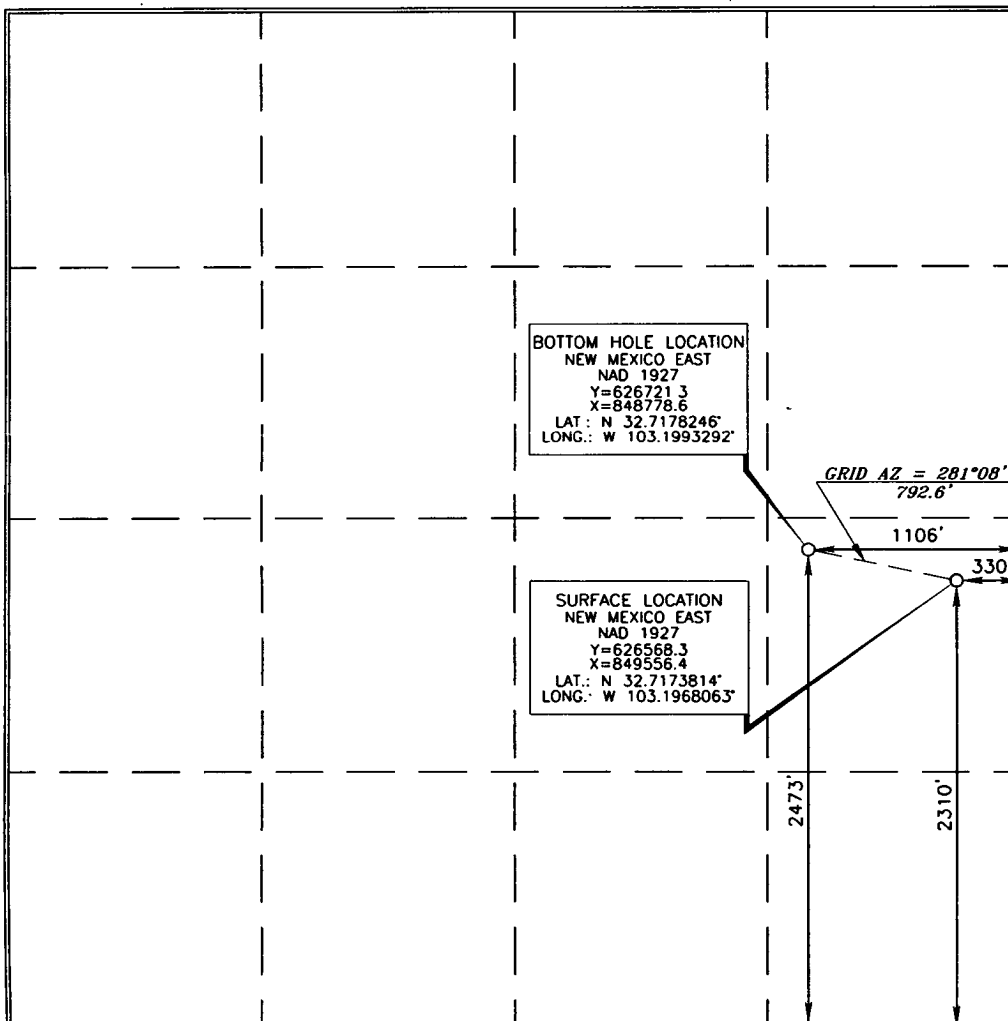
Surface Location

UL or lot no. I	Section 25	Township 18 SOUTH	Range 37 EAST, N.M.P.M.	Lot Idn	Feet from the 2310'	North/South line SOUTH	Feet from the 330'	East/West line EAST	County LEA
---------------------------	----------------------	-----------------------------	-----------------------------------	---------	-------------------------------	----------------------------------	------------------------------	-------------------------------	----------------------

Bottom Hole Location If Different From Surface

UL or lot no. I	Section 25	Township 18 SOUTH	Range 37 EAST, N.M.P.M.	Lot Idn	Feet from the 2473'	North/South line SOUTH	Feet from the 1106'	East/West line EAST	County LEA
Dedicated Acres 40	Joint or Infill	Consolidation Code	Order No. 2463				1108		

No allowable will be assigned to this completion until all interests have been consolidated or a non-standard unit has been approved by the division.



OPERATOR CERTIFICATION

I hereby certify that the information contained herein is true and complete to the best of my knowledge and belief, and that this organization either owns a working interest or unleased mineral interest in the land including the proposed bottom hole location or has a right to drill this well at this location pursuant to a contract with an owner of such a mineral or working interest, or to a voluntary pooling agreement or a compulsory pooling order heretofore entered by the division.

Mark Stephen 11/31/12
Signature Date

Printed Name

SURVEYOR CERTIFICATION

I hereby certify that the well location shown on this plat was plotted from field notes of a local survey made by me or under my supervision, and that the same is true and correct to the best of my belief.

OCTOBER 4, 2010
Date of Survey

Signature and Seal of Professional Surveyor

Terry J. Paul 9/26/2011
Certificate Number 15079

WO# 101004WL (Rev. A) (KA)

APR 11 2012