

DISTRICT I
1625 N. French Dr., Hobbs, NM 88240

DISTRICT II
1301 W. Grand Avenue, Artesia, NM 88210

DISTRICT III
1000 Rio Brazos Rd., Aztec, NM 87410

DISTRICT IV
1220 S. St. Francis Dr., Santa Fe, NM 87505

State of New Mexico
Energy, Minerals and Natural Resources Department

OIL CONSERVATION DIVISION
1220 South St. Francis Dr.
Santa Fe, New Mexico 87505

Form C-102
Revised July 18, 2010
Submit one copy to appropriate
District Office

WELL LOCATION AND ACREAGE DEDICATION

☐ AMENDED REPORT

API Number 30-025-40230	Pool Code 53565	Pool Name Salt Lake Delaware
Property Code 38749	Property Name QUEENIE "15" FEDERAL	Well Number 1 A
OGRID No. 231429	Operator Name MANZANO, LLC	Elevation 3532'

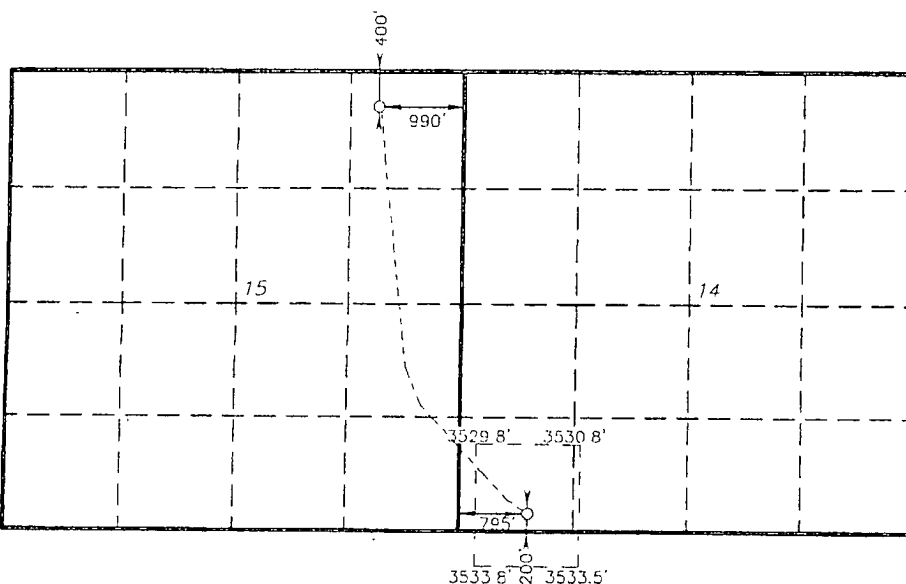
Surface Location

UL or lot No.	Section	Township	Range	Lot Idn	Feet from the	North/South line	Feet from the	East/West line	County
M	14	20 S	32 E		200	SOUTH	795	WEST	LEA

Bottom Hole Location If Different From Surface

UL or lot No.	Section	Township	Range	Lot Idn	Feet from the	North/South line	Feet from the	East/West line	County
A	15	20 S	32 E		400 4691	NORTH S	990 988	EAST	LEA
Dedicated Acres 120	Joint or Infill	Consolidation Code	Order No.						

NO ALLOWABLE WILL BE ASSIGNED TO THIS COMPLETION UNTIL ALL INTERESTS HAVE BEEN CONSOLIDATED
OR A NON-STANDARD UNIT HAS BEEN APPROVED BY THE DIVISION



PROPOSED BOTTOM
HOLE LOCATION

Lat - N 32°34'45.67"
Long - W 103°44'55.28"
NMSPC - N 574994.03
E 721422.47
(NAD-83)

SURFACE LOCATION

Lat - N 32°33'59.34"
Long - W 103°44'34.39"
NMSPC - N 570322.054
E 723235.890
(NAD-83)

OPERATOR CERTIFICATION

I hereby certify that the information contained herein is true and complete to the best of my knowledge and belief, and that this organization either owns a working interest or unleased mineral interest in the land including the proposed bottom hole location or has a right to drill this well at this location pursuant to a contract with an owner of such a mineral or working interest, or to a voluntary pooling agreement or a compulsory pooling order heretofore entered by the division.

Paul Raggsdale 7-7-11
Signature Date

PAUL RAGSDALE
Printed Name

Dragsdale Request Office, et
Email Address

SURVEYOR CERTIFICATION

I hereby certify that the well location shown on this plat was plotted from field notes of actual surveys made by me or under my supervision, and that the same is true and correct to the best of my belief.

Date Surveyed
Signature & Seal of Professional Surveyor

Certificate No. Gory L. Jones 7977

BASIN SURVEYS 24070

APR 18 2012