

Submit 1 Copy To Appropriate District Office
District I - (575) 393-6161
1625 N French Dr, Hobbs, NM 88240
District II - (575) 748-1283
811 S First St, Artesia, NM 88210
District III - (505) 334-6178
1000 Rio Brazos Rd, Aztec, NM 87410
District IV - (505) 476-3460
1220 S St Francis Dr, Santa Fe, NM 87505

State of New Mexico
Energy, Minerals and Natural Resources

Form C-103

Revised August 1, 2011

HOBBS OGD
RECEIVED
APR 19 2012
WATER CONSERVATION DIVISION
1220 South St. Francis Dr.
Santa Fe, NM 87505

SUNDRY NOTICES AND REPORTS ON WELLS (DO NOT USE THIS FORM FOR PROPOSALS TO DRILL OR TO DEEPEN OR PLUG BACK TO A DIFFERENT RESERVOIR USE "APPLICATION FOR PERMIT" (FORM C-101) FOR SUCH PROPOSALS.)		WELL API NO. 30-025-11506
1. Type of Well: Oil Well <input type="checkbox"/> Gas Well <input checked="" type="checkbox"/> Other <input type="checkbox"/> Injector <input type="checkbox"/>		5. Indicate Type of Lease STATE <input type="checkbox"/> FEE <input checked="" type="checkbox"/>
2. Name of Operator Resaca Operating Company		6. State Oil & Gas Lease No. 309574
3. Address of Operator 1331 Lamar Street, Suite 1450 Houston, TX 77010		7. Lease Name or Unit Agreement Name Langlie Jal Unit
4. Well Location Unit Letter <u>C</u> : <u>660</u> feet from the <u>North</u> line and <u>2310</u> feet from the <u>West</u> line Section <u>8</u> Township <u>25S</u> Range <u>37E</u> NMPM Lea County		8. Well Number <u>72W</u>
11. Elevation (Show whether DR, RKB, RT, GR, etc.) 3181' GL		9. OGRID Number 263848
		10. Pool name or Wildcat Langlie Mattix: 7Rivers-Queen-Grayburg

12. Check Appropriate Box to Indicate Nature of Notice, Report or Other Data

NOTICE OF INTENTION TO:

PERFORM REMEDIAL WORK ☐ PLUG AND ABANDON ☐
TEMPORARILY ABANDON ☐ CHANGE PLANS ☐
PULL OR ALTER CASING ☐ MULTIPLE COMPL ☐
DOWNHOLE COMMINGLE ☐

SUBSEQUENT REPORT OF:

REMEDIAL WORK ☒ ALTERING CASING ☐
COMMENCE DRILLING OPNS. ☐ P AND A ☐
CASING/CEMENT JOB ☐

OTHER: ☐

OTHER: ☐

13. Describe proposed or completed operations. (Clearly state all pertinent details, and give pertinent dates, including estimated date of starting any proposed work). SEE RULE 19.15.7.14 NMAC. For Multiple Completions: Attach wellbore diagram of proposed completion or recompletion.

- 1.) MIRU Pulling Unit & Above Ground Steel Pit; RU Tubing Tools. 3/14/12
- 2.) Opened well, bled off casing, NDWH, NU BOP.
- 3.) Picked up 15 jts 2 3/8" Super Max Special Clearance Tubing & 88 jts 2 3/8" EUE tubing
- 4.) Tagged top of liner; worked down into liner; tagged up at 3225' to screw onto packer.
- 5.) Went through motions to unset AD-1, dragging up hole 6'; POOH, no recovery.
- 6.) Picked up cross over to 2 3/8" EUE, RIH & attempted to screw onto packer.
- 7.) PU 5 1/2" Packer, RIH to 3125', loaded & tested casing to 500 psi, test good; (Notify NMOCD- Hobbs 24 hrs. prior to MIT)
- 8.) PU 3 1/2" AD-1 Packer, RIH to 3252' & Set (Top Perf- 3348'); ND BOP, NUWH.
- 9.) Circulated Packer Fluid; Ran Mechanical Integrity Test, test good. 3/18/12
- 10.) RDMO Pulling Unit, clean location, clean & dispose of pit fluids. 3/19/12
- 11.) Ran Post Workover MIT, test good, pulled chart for NMOCD. Placed well on injection. 3/20/12

Spud Date:

3/14/12

Rig Release Date:

3/19/12

I hereby certify that the information above is true and complete to the best of my knowledge and belief.

SIGNATURE

TITLE

Engineer Assistant

DATE

4/13/2012

Type or print name

Melanie Reyes

E-mail address: melanie.reyes@resacaexploitation.com

PHONE: (432) 580-8500

For State Use Only

APPROVED BY:

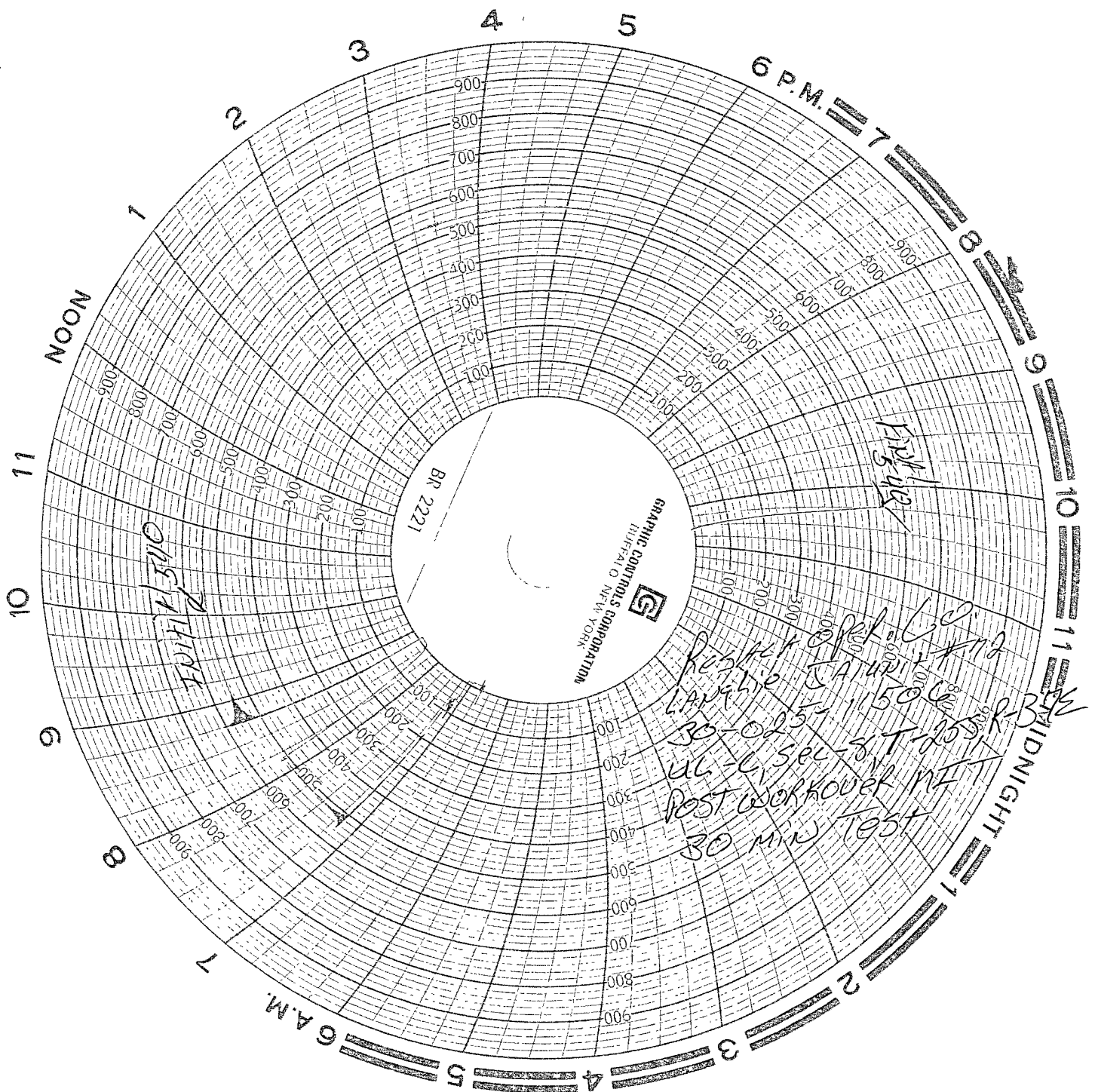
TITLE

STATE ENGINEER

DATE

4-19-2012

Conditions of Approval (if any):



WELLBORE SCHEMATIC AND HISTORY

CURRENT COMPLETION SCHEMATIC

LEASE NAME

Langlie Jal Unit

WELL NO

72 WIW

STATUS

Inj

Injection

Oil

API#

30-025-11506

LOCATION

660 FNL & 2310 FWL, Sec 8, T - 25 S, R - 37E, Lee County, New Mexico

SPUD DATE

11/13/37

TD

3748

KB

3,190'

DF

3,189'

INT COMP DATE

12/27/37

PBTD

3704

GL

3,181'

Surface Csg

Hole Size 17"
CSG Size: 13"
Set @ 226'
Circ to Surf

Hole Size 17 1/2 in
Csg Size: 8 5/8 in
Set @ 2767 ft
Sxs Cmt 900
TOC @ Surface

TOL @ 3145'

Cmt SQ

Csg Lk @ 2,873'

Yates @ 2895'

Cmt Sq

3,000'-3012'

Cmt Sq

3112'

7-R @ 3150'

3160'

Shoe @ 3242'

Production Csg

Hole Size 7 7/8" in
Csg. Size: 5 1/2 in
Set @ 3850 ft
Sxs Cmt 1300
TOC @ 285'

3348', 3344'
3358', 3362'
3396' 3400'
3411',
3440', 3444'
3475'-3482'
3495'-3497'
3516'-3520'
3542'-3546'
3550'-3560'
3573'-3579'
3589'
3593'-3595'
3651'-3653'
3665'-3673'
3686'-3690'
3696'-3697'
3702'-3704'

Liner

Hole Size 4 3/4 in
LNR Size: 3 1/2 in
Set From 3145 ft
Set To 3704 ft
Sxs Cmt 200
Circ Yes

Shoe @ 3145'

PBTD 3704 ft
TD 3748 ft

OH ID 4 3/4 in

ELECTRIC LOGS

GEOLOGICAL DATA

CORES, DST'S or MUD LOGS

HYDROCARBON BEARING ZONE DEPTH TOPS

Yates @ 2895'

7-Rivers @ 3150'

Queen @ 3512'

CASING PROFILE

Surface 13" - 48#, J-55 set @ 266' Cmt'd w/175 sxs - TOC @ Circulated

Inter 8 5/8" 28 & 32 # H 40 set @ 2,767' Cemented with 800 sx Common & 100 sx Incor w/ 2% salt, Circulated

PROD 5 1/2" 17# Grade C Set @ 3242' Cemented with 25 sx

Liner 3 1/2" 10# TOL @ 3145', BOL @ 3704' Cemented 200 sx

CURRENT PERFORATION DATA

CSG. PERFS

OPEN HOLE

27-Dec-37 Treated Open Hole f/ 3,226'-3,476' with 300 quarts Nitro

1-Sep-74 Perf'd Queen from 3651'-53', 3665'-73', 3686'-90', 3696'-95', & 3702'-04', 2 JHPF

1/1/75 Perf'd Queen/7-R from 3348'-3595', 2 JHPF

1/1/75 Perf'd Queen/7-R from 3348', 54', 58', 62', 96', 3400', 11', 40', 44', 3475'-82', 95'-97', 3516'-20', 42'-46', 50'-60', 73'-79', 89', & 3593'-95', 2 JHPF 54 holes

WELL HISTORY SUMMARY

27-Dec-37 Treated Open Hole f/ 3,226'-3,476' with 300 quarts Nitro IP: Flowing 155 bopd & 260 mcfpd.

Note: Gas Flowed while drilling (2,938'- 2990'), Flowed @ a rate of 1140 mcfpd.

1-Dec-47 Set BP @ 3,200' with 16' of cement on top Perf'd 3,112'-3,160', 94 holes. Swabbed Test: 1500 mcfpd, no oil.

Set BP @ 3,100' with 16' of cement on top Perf'd 3,000'-3,012', 23 holes Flowed Test: 126 bopd.

1-Aug-74 Squeezed perfs 3,000' to 3,012' with 350 Class C cement Clean out to 3,476' Logged well to 3,466'

Deepen to 3,748' with 4 3/4" hole Set 3 1/2" Liner from 3,145' to 3,748' Cemented with 200 sx Class C

Perf'd Queen from 3651'-53', 3665'-73', 3686'-90', 3696'-95', & 3702'-04', 2 JHPF Acidized with 3,000 gals 15% Sand frac'd with 44,000# sand IP: Pumping Test 28 bopd & 31 bwpd.

1/1/75 Squeezed TOL @ 3,145' with 100 Class C cement and Casing Leak @ 2,873' with 50 sx Class C cement

Perf'd Queen/7-R from 3348', 54', 58', 62', 96', 3400', 11', 40', 44', 3475'-82', 95'-97', 3516'-20', 42'-46', 50'-60',

73'-79', 89', & 3593'-95', 2 JHPF, 54 holes Acidized 2,500 gals 15% HCl Frac'd with 42,000 gals 2% KCl + 42,000# sand IP: 30 bopd & 85 bwpd. TSTM Gas.

10-Jan-86 Pull production string RIH with 3 1/2" Guiberson Uni-VI PKR on 2 3/8" IPC, set @ 3,250' IP: 490 BWPD @ Vacuum.

17-May-90 Cleaned fill from 3,436' to 3,710'

21-Dec-92 RIH with 1 25" OD CT. Washed to 3,591' - could not get below 3,591'

12-Dec-01 T/A

07-Sep-04 Failed pressure test!

16-Jun-06 Failed pressure test!

PREPARED BY

Domingo Carrizales

UPDATED

28-Feb-12