

Submit 1 Copy To Appropriate District Office

District I - (575) 393-6161

1625 N. French Dr., Hobbs, NM 88240

District II - (575) 748-1283

811 S. First St., Artesia, NM 88210

District III - (505) 334-6178

1000 Rio Brazos Rd., Aztec, NM 87410

District IV - (505) 476-3460

1220 S. St. Francis Dr., Santa Fe, NM 87505

State of New Mexico
Energy, Minerals and Natural Resources

HOBBS OCD

OIL CONSERVATION DIVISION

APR 19 2012

1220 South St. Francis Dr.
Santa Fe, NM 87505

Form C-103
Revised August 1, 2011

SUNDRY NOTICES AND REPORTS ON WELLS (DO NOT USE THIS FORM FOR PROPOSALS TO DRILL OR TO DEEPEN OR PLUG BACK TO A DIFFERENT RESERVOIR. USE "APPLICATION FOR PERMIT" (FORM C-101) FOR SUCH PROPOSALS.)		WELL API NO. 30-025-27642 ✓
1. Type of Well: Oil Well <input checked="" type="checkbox"/> Gas Well <input type="checkbox"/> Other <input type="checkbox"/>		5. Indicate Type of Lease STATE <input type="checkbox"/> FEE <input checked="" type="checkbox"/>
2. Name of Operator Chesapeake Operating, Inc.		6. State Oil & Gas Lease No.
3. Address of Operator P.O. Box 18496 Oklahoma City, OK 73154		7. Lease Name or Unit Agreement Name MONTIETH 20 ✓
4. Well Location Unit Letter F : 1980' feet from the North line and 2310' feet from the West line Section 20 Township 16 S Range 37 E NMPM County Lea		8. Well Number 1 ✓
11. Elevation (Show whether DR, RKB, RT, GR, etc.) 3819' GR		9. OGRID Number 147715 147719 ✓
		10. Pool name or Wildcat LOVINGTON; UPPER PENN, NE ✓

12. Check Appropriate Box to Indicate Nature of Notice, Report or Other Data

NOTICE OF INTENTION TO:

PERFORM REMEDIAL WORK ☐ PLUG AND ABANDON ☐
TEMPORARILY ABANDON ☐ CHANGE PLANS ☐
PULL OR ALTER CASING ☐ MULTIPLE COMPL. ☐
DOWNHOLE COMMINGLE ☐

SUBSEQUENT REPORT OF:

REMEDIAL WORK ☐ ALTERING CASING ☐
COMMENCE DRILLING OPNS ☐ P AND A ☐
CASING/CEMENT JOB ☐

OTHER: Repair Casing ☒

OTHER: Repair Casing/ Run MIT for TA ☒

13. Describe proposed or completed operations: (Clearly state all pertinent details, and give pertinent dates, including estimated date of starting any proposed work). SEE RULE 19.15.7-14 NMAC. For Multiple Completions: Attach wellbore diagram of proposed completion or recompletion.

Please find work performed in the casing repair and record of performing a MIT for this well from 2/23/12 through 4/17/12. MIT chart is attached.

2/23/12:

HELD PJSM, HAD ANCHORS TESTED, MIRU BASIC ENERGY SERVICES. NOTIFIED MAXEY BROWN W/ THE NMOC THAT WE WILL TA THIS WELL. SDFN.

2/24/12:

HELD PJSM POH & LAID DOWN ALL RODS WITH NO PUMP - N/D WELLHEAD - RELEASED TAG N/U BOP - START POH LAYING DOWN 108 JOINTS 2 7/8' TBG - SECURED THE WELL & SDFWE.

(Cont. Page 2)

This Approval of Temporary
Abandonment Expires 4-17-2017

Spud Date:

Rig Release Date:

I hereby certify that the information above is true and complete to the best of my knowledge and belief.

SIGNATURE

Bryan Arrant

TITLE Regulatory Specialist II

DATE 04/18/2012

Type or print name Bryan Arrant

E-mail address: bryan.arrant@chk.com

PHONE: (405)935-3782

For State Use Only

APPROVED BY:

Elaine Gonzalez

TITLE

STAFF MGR

DATE

4-19-2012

Conditions of Approval (if any):

MONTIETH 20 1
UNIT F, SEC. 20, T-16-S R-37-E
LEA CO., NM
API # 30-025-27642
(CONT. PAGE 2)

2/27/2012

HELD PJSM POH W/ 2 7/8" TBG THEN SWITCHED TO 2 3/8" TBG. CHANGED OUT RAMS ON BOP, TOH W/ 88JTS TBG THEN GOT TO RODS. MADE SEVERAL FAILED ATTEMPTS TO UNSEAT PUMP, BACKED OFF RODS, POH LAYING DOWN RODS. POH W/ REST OF TBG & PUMP IN SN, TIH W/ 36JTS 2 3/8" TBG AS KILL STRING. SDFN

2/28/2012

HELD PJSM PUMPED 70BBLs 2% KCL DOWN TBG & POH LAYING DOWN REST OF TBG MIRU WIRELINE TRUCK RIH WITH J/B G/R TO 11,250' P/U & RIH WITH CIBP DID NOT SET @ 11,165' DUE TO CASING COLLAR P/U TO 11,155' - SET CIBP - MADE 2 DUMP BAILER RUNS TO DUMPCEMENT ON CIBP - ESTIMATED TOC @ 11,111' - RDMO WIRELINE LOAD/TEST CSG @ 500# WITH 256BBLs PACKER FLUID - HELD GOOD - SDFN

2/29/2012

HELD PJSM REPLACED VALVES ON WELL HEAD - LOAD & TESTED CSG TO 500# W/ 43BBLs PKR FLUID - LOST 20# IN 15MINS - WILL LET SIT OVERNIGHT RUN MIT IN AM - GOT OK FROM MAXEY BROWN (NMOCD) TO PERFORM TEST IF THEY ARE NOT AVAILABLE TO WITNESS. RDMOSU

3/1/2012

HELD PJSMR/U BASIC PUMP TRUCK W/ CHART - TBG WAS ON A SLIGHT VACUUM - PUMPED 46 BBLs PACKER FLUID TO LOAD CASINGS SLOWW TO PRESSURE UP TO 520# - LOST 60# IN 20MINS - FAILED MIT - RDMO PUMP TRUCK. W/O/O

4/3/2012

PJSM CONDUCT RIG INSPECTION - R/U SERVICE RIG - RECEIVE & RACK 2 7/8 L-80 WORK STRING

4/4/2012

PJSM - N/D WELL HEAD - N/U BOP - P/U 4.75 BIT AND SUB - TIH W/TBG - TAG TOP OF CEMENT @ 11,163' (354 JTS) POOH W/ 2 JTS TBG - PUMPED 45 BBLs DOWN CSG TO BREAK CIRCULATION - CIRCULATED AN ADDITIONAL 70 BBLs - SISDON

4/5/2012

HELD PJSM POOH W/TBG - BIT SUB AND 4 3/7" BIT - P/U PACKER & TIH TO 11,100' - SET PACKER - LOADED & PRESSURED UP TO 1,000# - HELD 1,000# FOR 30 MINUTES - BLED OFF PRESSURE - RELEASE PACKER (CIBP IS HOLDING GOOD) POOH TO 10,500' - SET PACKER - PUMPED DOWN THE TUBING BUT COULD NOT CATCH PRESSURE - PULLE UP THE HOLE TO 10,000' - SDFWE

MONTIETH 20 1
UNIT F, SEC. 20, T-16-S R-37-E
LEA CO., NM
API # 30-025-27642
(CONT. PAGE 3)

HELD PJSM CHECKED WELL CONDITIONS - TBG @ 10,500' & ON A VACUUM. PUH TO 8622, SET PKR. LOAD & TEST TBG TO 500#, HELD GOOD. RELEASED PKR. PUH TO 7360, SET PKR. LOAD & TEST TO 500#. HELD GOOD. RELEASED PKR. PUH TO 6000, SET PKR BUT COULD NOT GET TO LOAD. LOAD & TEST BACKSIDE TO MAKE SURE IT IS GOOD TO SURFACE. DETERMINED HOLE WAS BETWEEN 6,060'-6,091'. SDFN

4/10/2012

HELD PJSM CHECKED WELL CONDITIONS - TBG WAS ON A VACUUM - DUG AROUND CELLAR W/A HYDRO-VAC TO EXPOSE INTERMEDIATE CASING VALVE. LOAD TBG WITH 10 BBLS 2% KCL - PUMPED IN & ESTABLISHED A RATE OF 2.5 BPM - CIRCULATED BACK AROUND INTERMEDIATE CASING WITH 80 BBLS - RELEASED THE PACKER & POH WITH UBING & PACKER - P/U & TIH WITH CEMENT RETAINER & SET @ 6,007 (90 ABOVE LEAK) SECURED THE WELL & SDFN

4/11/2012

HELD PJSM CIRCULATED 90 BBLS FLUID FROM TBG BACK UP INTERMEDIATE CASING - MIRU CHIEF SERVICES (WATSON PACKER) - TESTED IRON TO 3000# PRESSURED UP ON THE CASING TO 750# - BREAK CIRCULATION & EST 2.5 BPM RATE @ 400# - PUMPED 300SX CLASS C CEMENT DISPLACED CEMENT WITH 25 BBLS FRESH WATER @ 1,500# - SHUT IN INTERMEDIATE - HOLDING 1500# - COMPLETED DISPLACEMENT OF CEMENT WITH A TOTAL OF 35 BBLS - PUH TO DISENGAGE STINGER FROM RETAINER - REVERSED OUT WITH 50 BBLS FLUSH TO CLEAN OUTRDMO CHIEF SERVICES - POH WITH TBG & STINGER - SECURED WELL, SDFN

4/12/2012

HELD PJSM TIH WITH 4 3/4" BIT - BIT SUB & (4) DC WITH 2 7/8" TBG - TAGGED TOC @ 6,004' (3' ABOVE RETAINER) - D/O CEMENT & RETAINER CONTINUED DRILLING CEMENT DOWN TO 6,068' - APPROX 25' ABOVE CSG HOLE - P/U & CIRCULATE - BOTTOMS UP - SECURED WELL - SDFN

4/13/2012

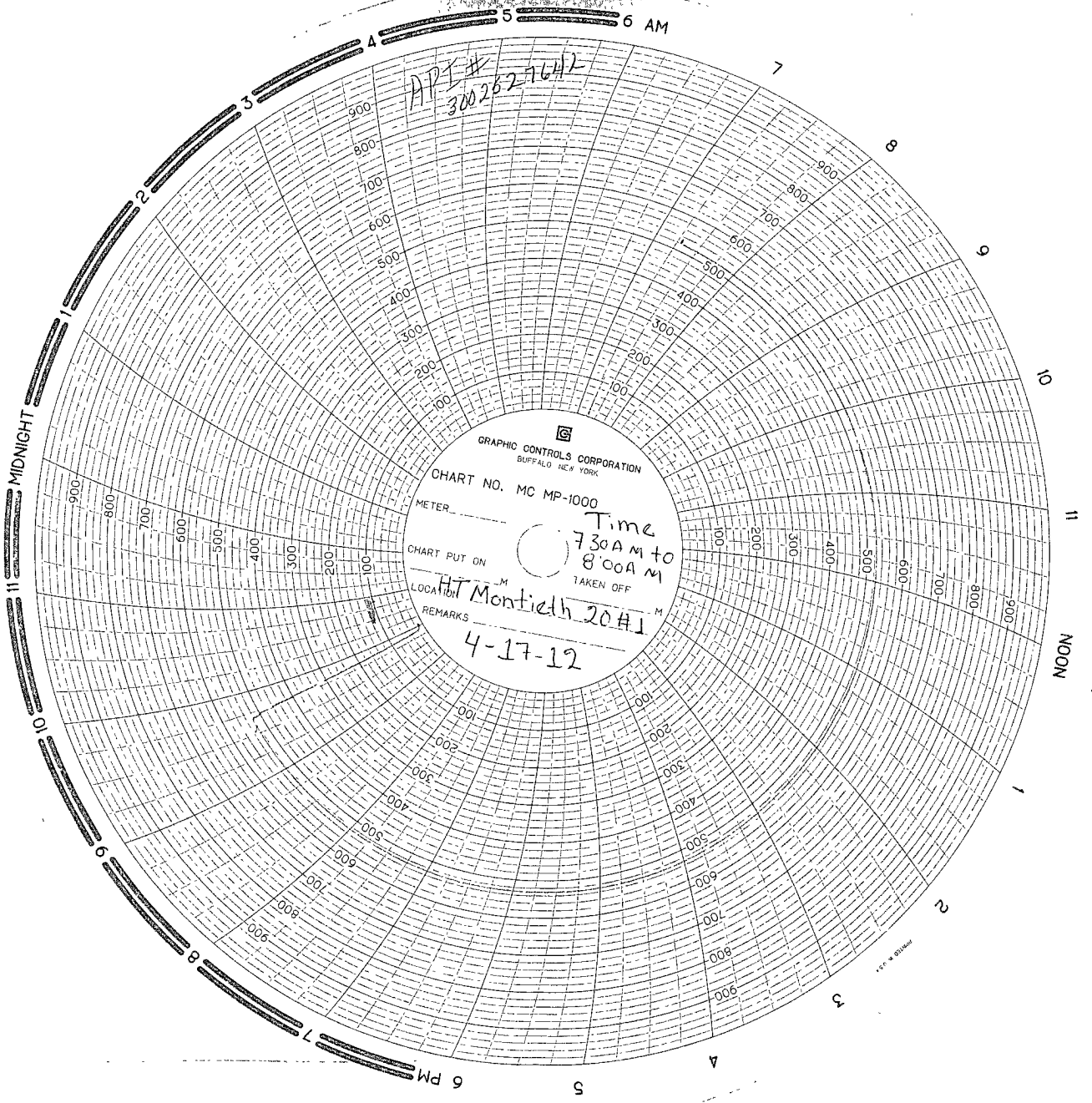
HELD PJSM, DRILLED OUT REST OF CMT TO 6149'. TEST CSG TO 500# FOR 30MINS. HELD GOOD - TIH W/ TBG TO 11,100', CIRCULATE HOLE W/ 200 BBLS PACKER FLUID TO CLEAN & STABILIZE THE WELLBORE FOR T/A - START POH LAYING DOWN 50 JTS 2 7/8" WS - SECURED WELL & SDFWE

4/16/2012

HELD PJSM COMPLETED LAYING DOWN WORK STRING - N/D BOP - N/U WELL HEAD WITH (4' 2 7/8" SUB IN SLIP FLANGE) NOTE PRESSURE UP WELL BORE AND RUN MIT CHART FOR NEW MEXICO OCD IN AM

4/17/2012

0'S102,900 HELD PJSM LOADED & PRESSURED UP CASING TO 500# - RUN MIT CHART FOR 30 MINUTES FOR NEW MEXICO OCD - PASSED TEST RDSUMO - FINAL



APT #
300252-7642

GRAPHIC CONTROLS CORPORATION
BUFFALO NEW YORK

CHART NO. MC MP-1000

METER _____
Time 7:30 AM to 8:00 AM
CHART PUT ON _____
TAKEN OFF _____
LOCATION HT Monticelli 2041 M

REMARKS
4-17-12