

DISTRICT I
2625 N. French Dr., Hobbs, NM 88240

HOBBS OCD

State of New Mexico
Energy, Minerals and Natural Resources Department

Form C-102
Revised July 16, 2010

DISTRICT II
1301 W. Grand Avenue, Artesia, NM 88210

DISTRICT III
1000 Rio Brazos Rd., Aztec, NM 87410

DISTRICT IV
1220 S. St. Francis Dr., Santa Fe, NM 87505

APR 19 2012

RECEIVED

OIL CONSERVATION DIVISION HOBBS OCD
1220 South St. Francis Dr.
Santa Fe, New Mexico 87505

Submit one copy to appropriate
District Office

APR 19 2012

☐ AMENDED REPORT

WELL LOCATION AND ACREAGE DEDICATION PLAT

API Number 30-025-40534	Pool Code 97933	Well Name WC 025-0752332048 Bone Spring Wildcat
Property Code 39179	Property Name RED TANK "4" FEDERAL	Well Number 1
OGRID No. 162683	Operator Name CIMAREX ENERGY CO. OF COLORADO	Elevation 3586'

Surface Location

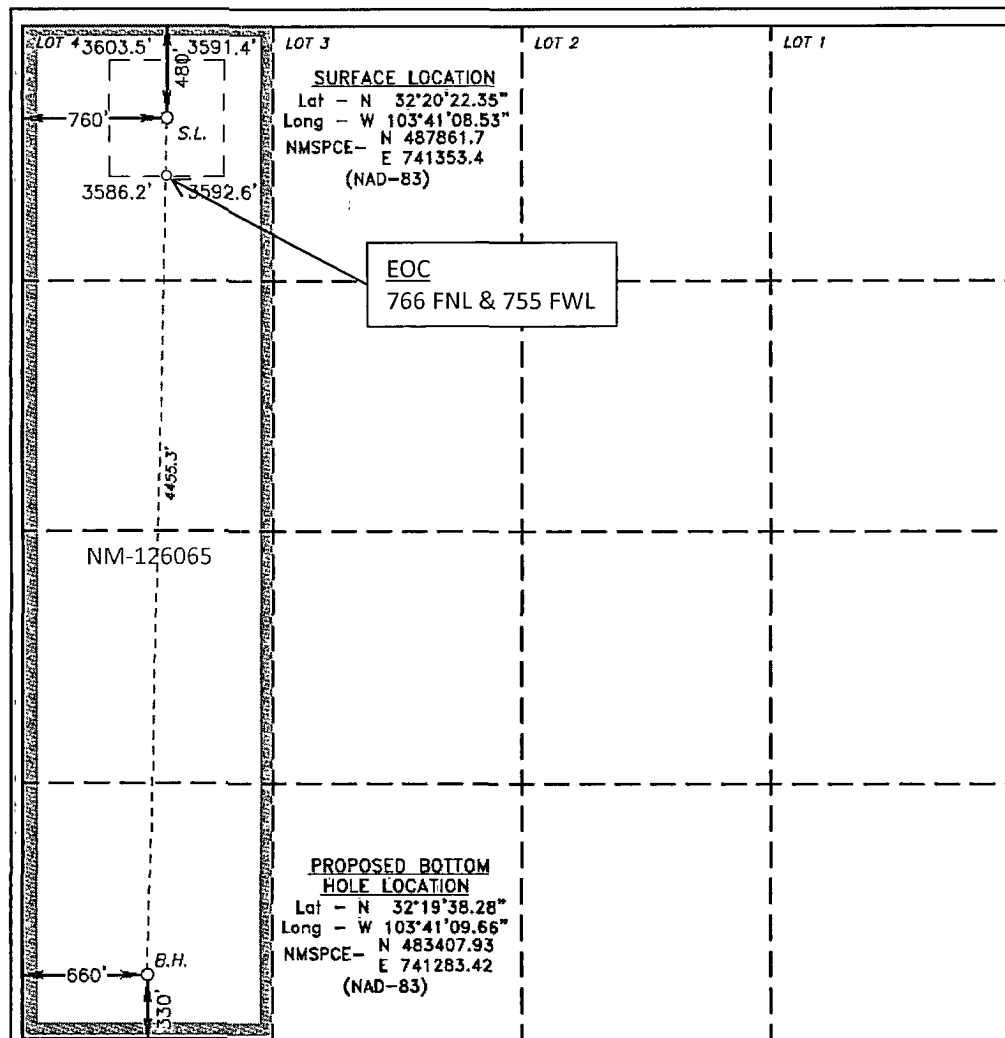
UL or lot No.	Section	Township	Range	Lot Idn	Feet from the	North/South line	Feet from the	East/West line	County
LOT 4	4	23 S	32 E		480	NORTH	760	WEST	LEA

Bottom Hole Location If Different From Surface

UL or lot No.	Section	Township	Range	Lot Idn	Feet from the	North/South line	Feet from the	East/West line	County
M	4	23 S	32 E		330	SOUTH	660	WEST	LEA

Dedicated Acres	Joint or Infill	Consolidation Code	Order No.
159.48			

NO ALLOWABLE WILL BE ASSIGNED TO THIS COMPLETION UNTIL ALL INTERESTS HAVE BEEN CONSOLIDATED
OR A NON-STANDARD UNIT HAS BEEN APPROVED BY THE DIVISION



OPERATOR CERTIFICATION

I hereby certify that the information contained herein is true and complete to the best of my knowledge and belief, and that this organization either owns a working interest or unleased mineral interest in the land including the proposed bottom hole location or has a right to drill this well at this location pursuant to a contract with an owner of such a mineral or working interest, or to a voluntary pooling agreement or a compulsory pooling order heretofore entered by the division.

Zeno Farris 6/6/2011
Signature Date

Zeno Farris

Printed Name
zfarris@cimarex.com

Email Address

SURVEYOR CERTIFICATION

I hereby certify that the well location shown on this plat was plotted from field notes of actual surveys made by me or under my supervision, and that the same is true and correct to the best of my belief.

DATE SURVEYED
SIGNATURE & SEAL OF PROFESSIONAL SURVEYOR
W.C. JONES

Certificate No. Gary L. Jones 7977

BASIN SURVEYS 24085

APR 25 2012