

30-025-40537

Form C-102

Revised October 12, 2005
 Submit to Appropriate District Office
 State Lease- 4 Copies
 Fee Lease- 3 Copies

District I
 1625 N. French Dr., Hobbs, NM 88240

District II
 1301 W. Grand Avenue, Artesia, NM 88210

District III
 1000 Rio Brazos Rd., Aztec, NM 87410

District IV
 1220 S. St. Francis Dr., Santa Fe, NM 87505

State of New Mexico
 Energy, Minerals & Natural Resources Department
 OIL CONSERVATION DIVISION
 1220 South St. Francis Dr.
 Santa Fe, NM 87505

APR 20 2012

☐ AMENDED REPORT

RECEIVED LOCATION AND ACREAGE DEDICATION PLAT

API Number 30-025-40537	Pool Code 51020-97900	Pool Name Red Hills; Bone Spring
Property Code 39180	Property Name VACA "24" FED. COM	Well Number 6H
OGRID No. 7377	Operator Name EOG RESOURCES, INC.	Elevation 3329.4'

Surface Location

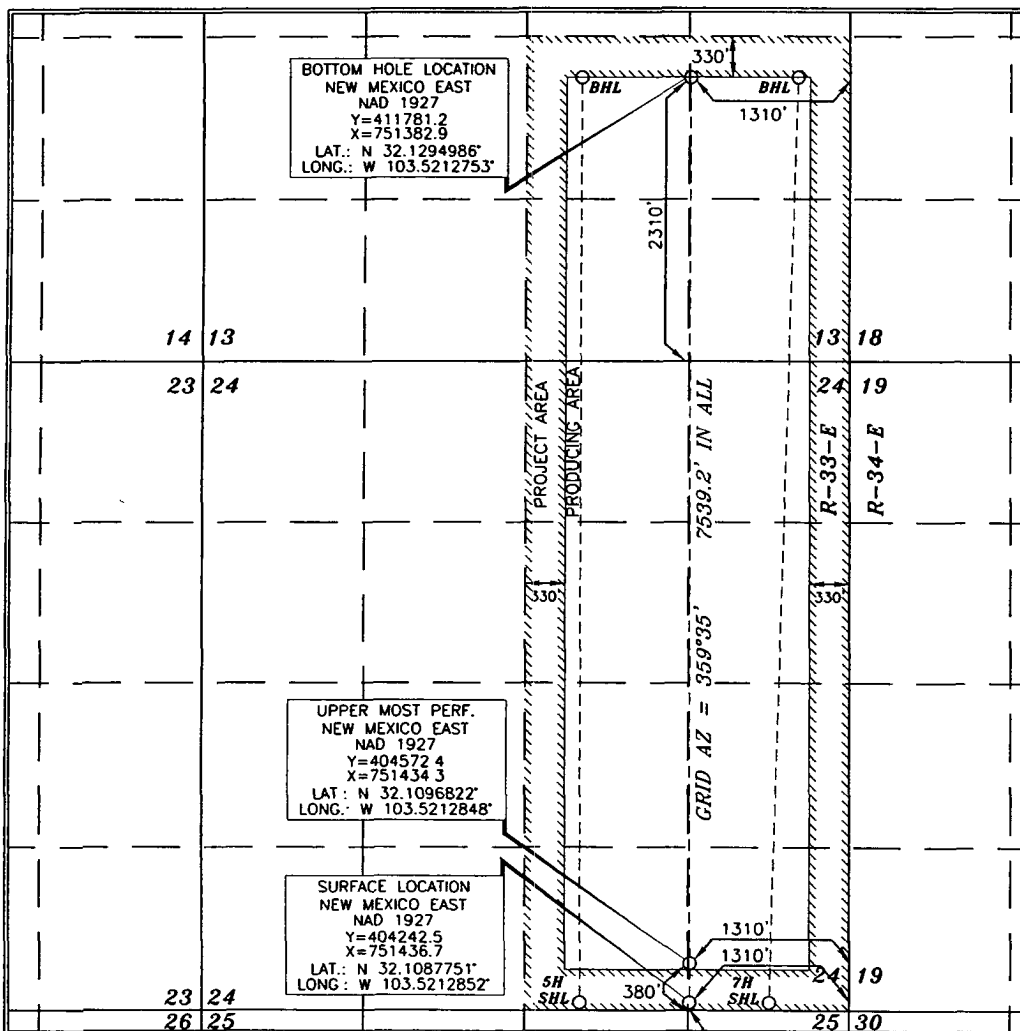
UL or lot no.	Section	Township	Range	Lot Idn	Feet from the	North/South line	Feet from the	East/West line	County
P	24	25 SOUTH	33 EAST, N.M.P.M.		50'	SOUTH	1310'	EAST	LEA

Bottom Hole Location If Different From Surface

UL or lot no.	Section	Township	Range	Lot Idn	Feet from the	North/South line	Feet from the	East/West line	County
I	13	25 SOUTH	33 EAST, N.M.P.M.		2310'	SOUTH	1310'	EAST	LEA

Dedicated Acres	Joint or Infill	Consolidation Code	Order No.
480			

No allowable will be assigned to this completion until all interests have been consolidated or a non-standard unit has been approved by the division.



OPERATOR CERTIFICATION

I hereby certify that the information contained herein is true and complete to the best of my knowledge and belief, and that this organization either owns a working interest or unleased mineral interest in the land including the proposed bottom hole location or has a right to drill this well at this location pursuant to a contract with an owner of such a mineral or working interest, or to a voluntary pooling agreement or a compulsory pooling order heretofore entered by the division.

Roger Motley 10-12-2011
 Signature Date

Roger Motley
 Printed Name

SURVEYOR CERTIFICATION

I hereby certify that the well location shown on this plat was plotted from field notes of actual surveys made by me or under my supervision, and that the same are true and correct to the best of my belief.

[Signature]
 Date of Survey
 SEPTEMBER 15, 2011

[Signature]
 Signature and Seal of Professional Surveyor

[Signature] 10/4/2011
 Certificate Number 15079

WO# 110915WL-b (KA)

APR 25 2012