

DISTRICT I
1825 N. French Dr., Hobbs, NM 88240
Phone (875) 393-8181 Fax (875) 393-8780

DISTRICT II
811 S. First St., Artesia, NM 88210
Phone (505) 748-1283 Fax (505) 748-8728

DISTRICT III
1000 Rio Brazos Rd., Aztec, NM 87410
Phone (505) 334-8170 Fax (505) 334-8170

DISTRICT IV
1220 S. St. Francis Dr., Santa Fe, NM 87505
Phone (505) 478-3400 Fax (505) 478-3402

State of New Mexico
Energy, Minerals and Natural Resources Department

Form C-102
Revised August 1, 2011

Submit one copy to appropriate
District Office

OIL CONSERVATION DIVISION
1220 South St. Francis Dr.
Santa Fe, New Mexico 87505

WELL LOCATION AND ACREAGE DEDICATION PLAT

☐ AMENDED REPORT

API Number 30-025-40541	Pool Code 49210	Pool Name Paddock
Property Code 26487	Property Name STATE PA	Well Number 8
OGRID No. 873	Operator Name APACHE CORPORATION	Elevation 3434'

Surface Location

UL or lot No.	Section	Township	Range	Lot Idn	Feet from the	North/South line	Feet from the	East/West line	County
N	18	22 S	37 E		330	SOUTH	1600	WEST	LEA

Bottom Hole Location If Different From Surface

UL or lot No.	Section	Township	Range	Lot Idn	Feet from the	North/South line	Feet from the	East/West line	County

Dedicated Acres 40	Joint or Infill	Consolidation Code	Order No.
------------------------------	-----------------	--------------------	-----------

**NO ALLOWABLE WILL BE ASSIGNED TO THIS COMPLETION UNTIL ALL INTERESTS HAVE BEEN CONSOLIDATED
OR A NON-STANDARD UNIT HAS BEEN APPROVED BY THE DIVISION**

	<p>SURFACE LOCATION Lat - N 32°23'07.86" Long - W 103°12'18.91" NMSPC- N 505818.530 E 889567.206 (NAD-83)</p>	<p>OPERATOR CERTIFICATION I hereby certify that the information contained herein is true and complete to the best of my knowledge and belief, and that this organization either owns a working interest or unleased mineral interest in the land including the proposed bottom hole location or has a right to drill this well at this location pursuant to a contract with an owner of such a mineral or working interest, or to a voluntary pooling agreement or a compulsory pooling order heretofore entered by the division.</p> <p><i>Susan Blakemore</i> 4/23/2012 Signature Date <i>Susan Blakemore</i> Printed Name <i>Susan.blakemore@apachecorp.com</i> Email Address</p> <p>SURVEYOR CERTIFICATION I hereby certify that the well location shown on this plat was plotted from field notes of actual surveys made by me or under my supervision, and that the same is true and correct to the best of my belief.</p> <p> Certificate No. Gary L. Jones 7977 BASIN SURVEYS 26499</p>
	<p>Lat - N 32°23'07.41" Long - W 103°12'17.23" NMSPC- N 505758.433 E 848382.152 (NAD-27)</p>	
	<p>32.385392 103.204786</p>	

APR 26 2012

DISTRICT I1625 N. French Dr., Hobbs, NM 88240
Phone (505) 503-8101 Fax: (505) 503-0720**DISTRICT II**811 S. First St., Artesia, NM 88210
Phone (505) 748-1283 Fax: (505) 748-8720**DISTRICT III**1000 Rio Brazos Rd., Aztec, NM 87410
Phone (505) 334-8178 Fax: (505) 334-8170**DISTRICT IV**1220 S. St. Francis Dr., Santa Fe, NM 87505
Phone (505) 478-3460 Fax: (505) 478-3482**State of New Mexico**
Energy, Minerals and Natural Resources Department**OIL CONSERVATION DIVISION**1220 South St. Francis Dr.
Santa Fe, New Mexico 87505

Form C-102

Revised August 1, 2011

Submit one copy to appropriate
District Office**WELL LOCATION AND ACREAGE DEDICATION PLAT**☐ AMENDED REPORT

API Number 30025-40541	Pool Code 6660	Pool Name Blinery Oil and Gas (Oil)
Property Code 26487	Property Name STATE PA	Well Number 8
OGRID No. 873	Operator Name APACHE CORPORATION	Elevation 3434'

Surface Location

UL or lot No.	Section	Township	Range	Lot Idn	Feet from the	North/South line	Feet from the	East/West line	County
N	18	22 S	37 E		330	SOUTH	1600	WEST	LEA

Bottom Hole Location If Different From Surface

UL or lot No.	Section	Township	Range	Lot Idn	Feet from the	North/South line	Feet from the	East/West line	County

Dedicated Acres	Joint or Infill	Consolidation Code	Order No.
40			

**NO ALLOWABLE WELL BE ASSIGNED TO THIS COMPLETION UNTIL ALL INTERESTS HAVE BEEN CONSOLIDATED
OR A NON-STANDARD UNIT HAS BEEN APPROVED BY THE DIVISION**

	SURFACE LOCATION Lat - N 32°23'07.86" Long - W 103°12'18.91" NMSPCE- N 505818.530 E 889567.206 (NAD-83) Lat - N 32°23'07.41" Long - W 103°12'17.23" NMSPCE- N 505758.433 E 848382.152 (NAD-27)	OPERATOR CERTIFICATION I hereby certify that the information contained herein is true and complete to the best of my knowledge and belief, and that this organization either owns a working interest or unleased mineral interest in the land including the proposed bottom hole location or has a right to drill this well at this location pursuant to a contract with an owner of such a mineral or working interest, or to a voluntary pooling agreement or a compulsory pooling order heretofore entered by the Division. Signature <u>Susan Blakemore</u> Date <u>4/23/2012</u> Printed Name <u>Susan Blakemore</u> Email Address <u>Susan.Blakemore@apachecorp.com</u>
		SURVEYOR CERTIFICATION I hereby certify that the well location shown on this plat was plotted from field notes of actual surveys made by me or under my supervision, and that the same is true and correct to the best of my belief.
		Certificate No. Gary L. Jones 7977 BASIN SURVEYS 26499
		32.385392 103.204786

DISTRICT I
1625 N. French Dr., Hobbs, NM 88240
Phone (505) 503-6101 Fax: (505) 503-0720

DISTRICT II
811 S. First St., Artesia, NM 88210
Phone (505) 740-1203 Fax: (505) 740-0720

DISTRICT III
1000 Rio Brazos Rd., Aztec, NM 87410
Phone (505) 334-6178 Fax: (505) 834-6170

DISTRICT IV
1220 S. St. Francis Dr., Santa Fe, NM 87505
Phone (505) 476-3450 Fax: (505) 476-3482

State of New Mexico
Energy, Minerals and Natural Resources Department

Form C-102
Revised August 1, 2011

Submit one copy to appropriate
District Office

OIL CONSERVATION DIVISION
1220 South St. Francis Dr.
Santa Fe, New Mexico 87505

WELL LOCATION AND ACREAGE DEDICATION PLAT

☐ AMENDED REPORT

API Number 30-025 - 40541	Pool Code 60240	Pool Name Tubb Oil and Gas (Oil)
Property Code 26487	Property Name STATE PA	Well Number 8
GRID No. 873	Operator Name APACHE CORPORATION	Elevation 3434'

Surface Location

UL or lot No.	Section	Township	Range	Lot Idn	Feet from the	North/South line	Feet from the	East/West line	County
N	18	22 S	37 E		330	SOUTH	1600	WEST	LEA

Bottom Hole Location If Different From Surface

UL or lot No.	Section	Township	Range	Lot Idn	Feet from the	North/South line	Feet from the	East/West line	County

Dedicated Acres 40	Joint or Infill	Consolidation Code	Order No.
-----------------------	-----------------	--------------------	-----------

NO ALLOWABLE WILL BE ASSIGNED TO THIS COMPLETION UNTIL ALL INTERESTS HAVE BEEN CONSOLIDATED
OR A NON-STANDARD UNIT HAS BEEN APPROVED BY THE DIVISION

	<p>OPERATOR CERTIFICATION</p> <p>I hereby certify that the information contained herein is true and complete to the best of my knowledge and belief, and that this organization either owns a working interest or unleased mineral interest in the land including the proposed bottom hole location or has a right to drill this well at this location pursuant to a contract with an owner of such a mineral or working interest, or to a voluntary pooling agreement or a compulsory pooling order heretofore entered by the division.</p> <p><i>Susan Blakemore</i> 4/23/2012 Signature Date</p> <p><i>Susan Blakemore</i> Printed Name</p> <p><i>Susan.blakemore@apachecorp.com</i> Email Address</p>
	<p>SURVEYOR CERTIFICATION</p> <p>I hereby certify that the well location shown on this plat was plotted from field notes of actual surveys made by me or under my supervision, and that the same is true and correct to the best of my belief.</p> <p></p> <p>Certificate No. Gary L. Jones 7977</p> <p>BASIN SURVEYS 26499</p>

DISTRICT I

1025 N. French Dr., Hobbs, NM 88240
Phone (505) 393-8181 Fax: (505) 393-0720

DISTRICT II

811 S. First St., Artesia, NM 88210
Phone (505) 748-1283 Fax: (505) 748-9720

DISTRICT III

1000 Rio Brazos Rd., Artec, NM 87410
Phone (505) 334-8178 Fax: (505) 334-8179

DISTRICT IV

1220 S. St. Francis Dr., Santa Fe, NM 87506
Phone (505) 476-3460 Fax: (505) 476-3462

State of New Mexico
Energy, Minerals and Natural Resources Department

OIL CONSERVATION DIVISION

1220 South St. Francis Dr.
Santa Fe, New Mexico 87505

Form C-102

Revised August 1, 2011

Submit one copy to appropriate
District Office

WELL LOCATION AND ACREAGE DEDICATION PLAT

☐ AMENDED REPORT

API Number 30-025- 40541	Pool Code 19190	Pool Name Drinkard
Property Code 26487	Property Name STATE PA	Well Number 8
OGRID No. 873	Operator Name APACHE CORPORATION	Elevation 3434'

Surface Location

UL or lot No.	Section	Township	Range	Lot Idn	Feet from the	North/South line	Feet from the	East/West line	County
N	18	22 S	37 E		330	SOUTH	1600	WEST	LEA

Bottom Hole Location If Different From Surface

UL or lot No.	Section	Township	Range	Lot Idn	Feet from the	North/South line	Feet from the	East/West line	County
Dedicated Acres 40	Joint or Infill	Consolidation Code	Order No.						

NO ALLOWABLE WILL BE ASSIGNED TO THIS COMPLETION UNTIL ALL INTERESTS HAVE BEEN CONSOLIDATED
OR A NON-STANDARD UNIT HAS BEEN APPROVED BY THE DIVISION

	<p>SURFACE LOCATION Lat - N 32°23'07.86" Long - W 103°12'18.91" NMSPC- N 505818.530 E 889567.206 (NAD-83)</p> <p>Lat - N 32°23'07.41" Long - W 103°12'17.23" NMSPC- N 505758.433 E 848382.152 (NAD-27)</p>	<p>OPERATOR CERTIFICATION I hereby certify that the information contained herein is true and complete to the best of my knowledge and belief, and that this organization either owns a working interest or unleased mineral interest in the land including the proposed bottom hole location or has a right to drill this well at this location pursuant to a contract with an owner of such a mineral or working interest, or to a voluntary pooling agreement or a compulsory pooling order heretofore entered by the division.</p> <p><i>Susan Blakemore</i> 4/23/2012 Signature Date</p> <p><i>Susan Blakemore</i> Printed Name</p> <p><i>susan.blakemore@apachecorp.com</i> Email Address</p>
		<p>SURVEYOR CERTIFICATION I hereby certify that the well location shown on this plat was plotted from field notes of actual surveys made by me or under my supervision and that the same is true and correct to the best of my belief.</p> <p><i>Gary L. Jones</i> 2012 Date Signature Gary L. Jones Registered Professional Surveyor 7977</p> <p>26499</p> <p>Certificate No. Gary L. Jones 7977</p> <p>BASIN SURVEYS 26499</p>

DISTRICT I

1825 N. French Dr., Hobbs, NM 88240
Phone (505) 393-8181 Fax: (505) 393-0720

DISTRICT II

811 S. First St., Artesia, NM 88210
Phone (505) 748-1288 Fax: (505) 748-8720

DISTRICT III

1000 Rio Brazos Rd., Aztec, NM 87410
Phone (505) 354-6178 Fax: (505) 354-6170

DISTRICT IV

1220 S. St. Francis Dr., Santa Fe, NM 87505
Phone (505) 476-3400 Fax: (505) 476-3482

State of New Mexico
Energy, Minerals and Natural Resources Department

OIL CONSERVATION DIVISION
1220 South St. Francis Dr.
Santa Fe, New Mexico 87505

Form C-102

Revised August 1, 2011

Submit one copy to appropriate
District Office

WELL LOCATION AND ACREAGE DEDICATION PLAT

☐ AMENDED REPORT

API Number 30-025- 40541	Pool Code 62700	Pool Name Wantz; H60
Property Code 26487	Property Name STATE PA	Well Number 8
OGRD No. 873	Operator Name APACHE CORPORATION	Elevation 3434'

Surface Location

UL or lot No.	Section	Township	Range	Lot Idn	Feet from the	North/South line	Feet from the	East/West line	County
N	18	22 S	37 E		330	SOUTH	1600	WEST	LEA

Bottom Hole Location If Different From Surface

UL or lot No.	Section	Township	Range	Lot Idn	Feet from the	North/South line	Feet from the	East/West line	County

Dedicated Acres 40	Joint or Infill	Consolidation Code	Order No.
-----------------------	-----------------	--------------------	-----------

NO ALLOWABLE WILL BE ASSIGNED TO THIS COMPLETION UNTIL ALL INTERESTS HAVE BEEN CONSOLIDATED
OR A NON-STANDARD UNIT HAS BEEN APPROVED BY THE DIVISION

	<p>SURFACE LOCATION Lat - N 32°23'07.86" Long - W 103°12'18.91" NMSPC- N 505818.530 E 889567.206 (NAD-83) Lat - N 32°23'07.41" Long - W 103°12'17.23" NMSPC- N 505758.433 E 848382.152 (NAD-27)</p>	<p>OPERATOR CERTIFICATION I hereby certify that the information contained herein is true and complete to the best of my knowledge and belief, and that this organization either owns a working interest or unleased mineral interest in the land including the proposed bottom hole location or has a right to drill this well at this location pursuant to a contract with an owner of such a mineral or working interest, or to a voluntary pooling agreement or a compulsory pooling order heretofore entered by the division.</p> <p><i>Susan Blakemore</i> 4/23/2012 Signature Date</p> <p><i>Susan Blakemore</i> Printed Name</p> <p><i>Susan.blakemore@apachecorp.com</i> Email Address</p>
		<p>SURVEYOR CERTIFICATION I hereby certify that the well location shown on this plat was plotted from field notes of actual surveys made by me or under my supervision and that the same is true and correct to the best of my belief.</p> <p><i>GARY L. JONES</i> 2012 Date Signed Professional Surveyor 26499</p> <p>Certificate No. Gary L. Jones 7977</p> <p>BASIN SURVEYS 26499</p>

SECTION 18, TOWNSHIP 22 SOUTH, RANGE 37 EAST, N.M.P.M.,
LEA COUNTY, NEW MEXICO.

APACHE CORPORATION
STATE PA #8
ELEV. - 3434'

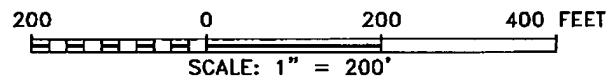
Lat - N 32°23'07.86"
Long - W 103°12'18.91"
NMSPCE- N 505818.530
E 889567.206
(NAD-83)

Lat - N 32°23'07.41"
Long - W 103°12'17.23"
NMSPCE- N 505758.433
E 848382.152
(NAD-27)

150' WEST
OFF SET □
3435.5'

150' EAST
□ OFF SET
3431.2'

150' SOUTH
OFF SET
3431.2'



Directions to Location:

FROM THE JUNCTION OF LEGION AND DELAWARE, GO WEST ON DELAWARE 1.3 MILES TO LEASE ROAD, ON LEASE ROAD GO SOUTH 0.6 MILES TO LEASE ROAD, ON LEASE ROAD GO WEST 0.2 MILES TURNING SOUTH ON LEASE ROAD FOR 0.3 MILES TO PROPOSED LOCATION.

APACHE CORPORATION

REF: STATE PA #8 / WELL PAD TOPO

THE STATE PA #8 LOCATED 330'

FROM THE SOUTH LINE AND 1600' FROM THE WEST LINE OF
SECTION 18, TOWNSHIP 22 SOUTH, RANGE 37 EAST,

N.M.P.M., LEA COUNTY, NEW MEXICO.

BASIN SURVEYS P.O. BOX 1786-HOBBS, NEW MEXICO

W.O. Number: 26499

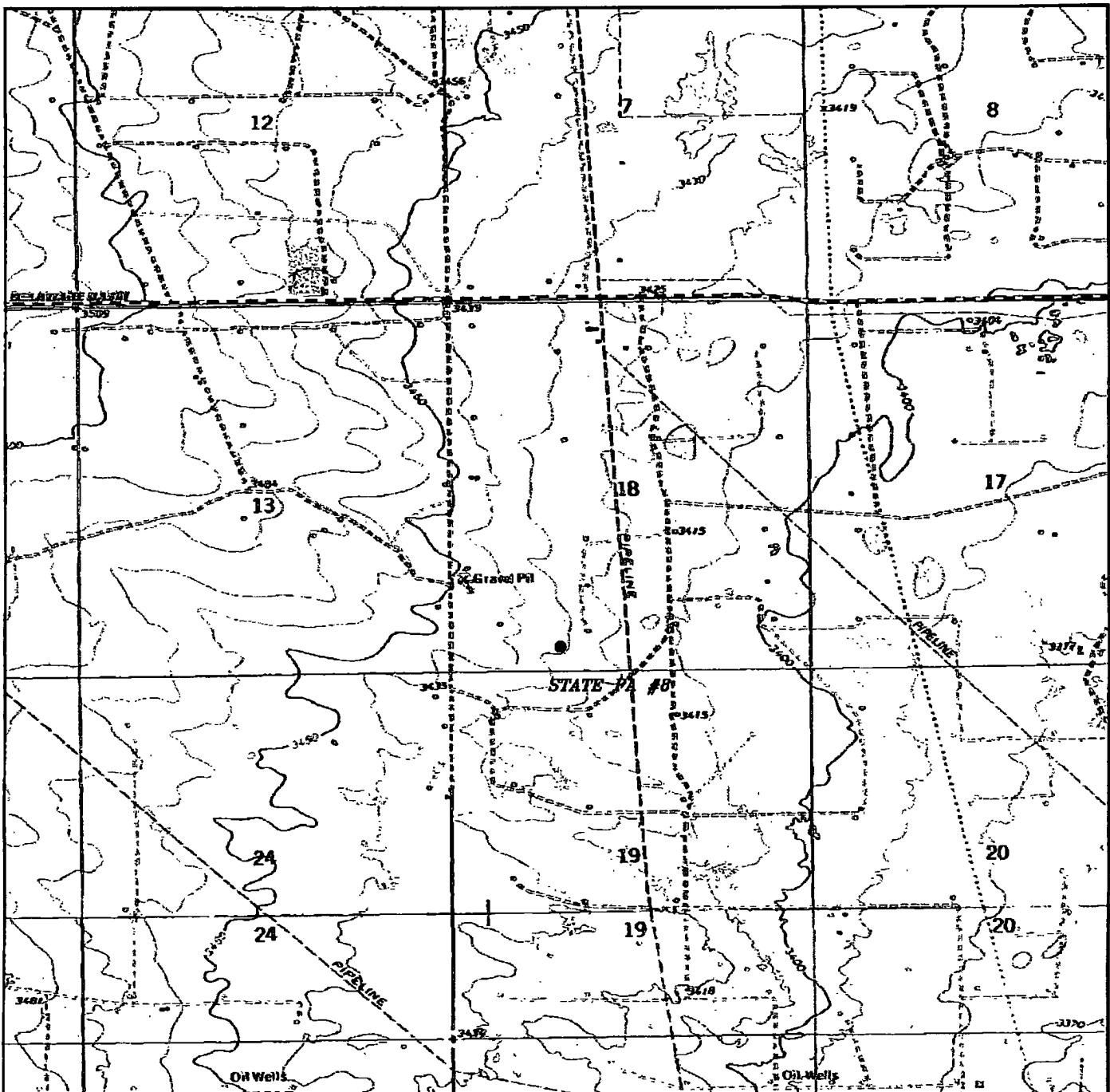
Drawn By: J. SMALL

Date: 04-13-2012

Disk: JMS 26499

Survey Date: 04-03-2012

Sheet 1 of 1 Sheets



STATE PA #8
 Located 330' FSL and 1600' FWL
 Section 18, Township 22 South, Range 37 East,
 N.M.P.M., Lea County, New Mexico.

basin
surveys

focused on excellence
 in the oilfield

P.O. Box 1786
 1120 N. West County Rd.
 Hobbs, New Mexico 88241
 (575) 393-7316 - Office
 (575) 392-2206 - Fax
 basinsurveys.com

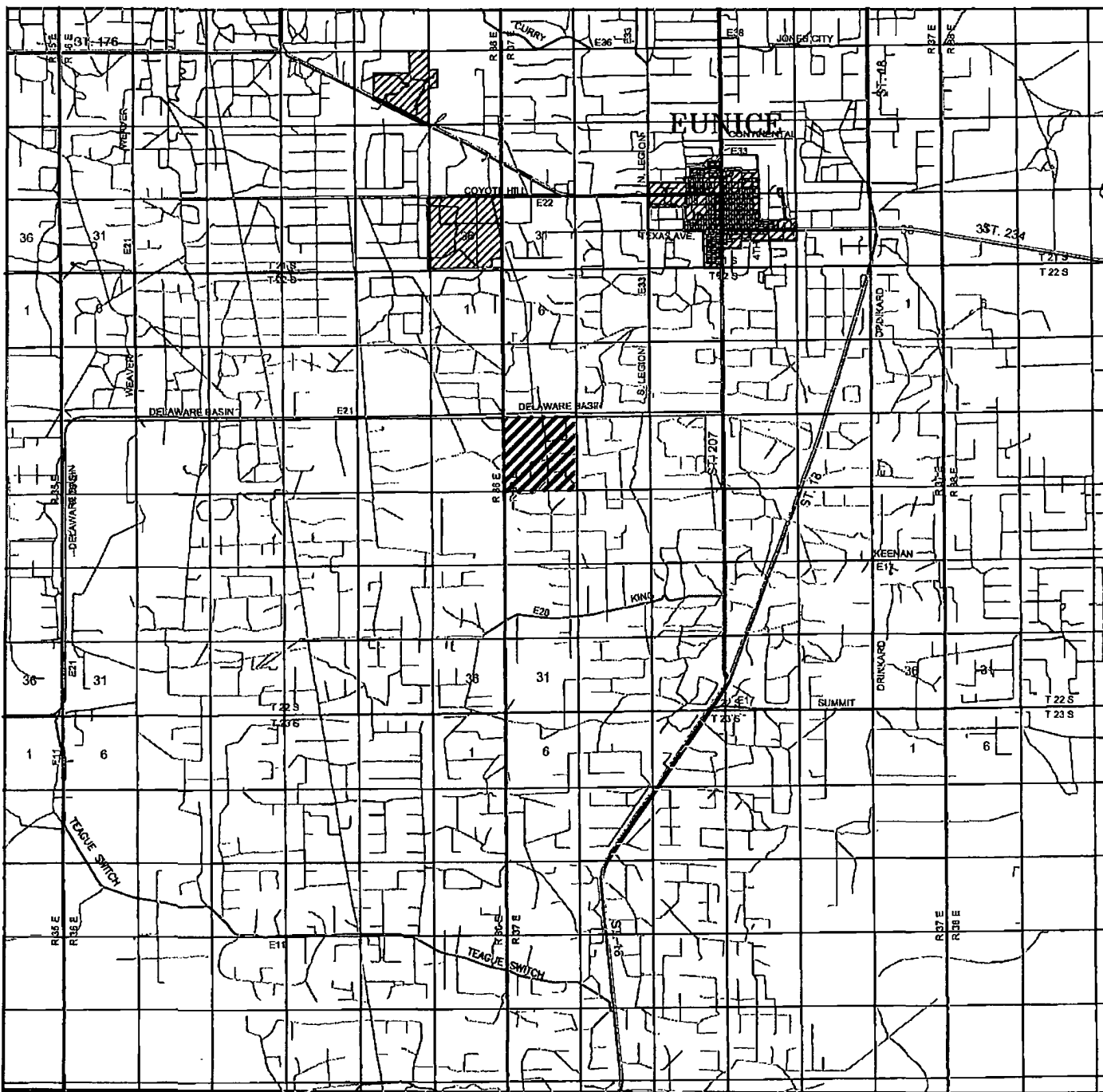
W.O. Number: JMS 26499

Survey Date: 04-03-2012

Scale: 1" = 2000'

Date: 04-13-2012

APACHE
 CORPORATION



STATE PA #8

Located 330' FSL and 1600' FWL

Section 18, Township 22 South, Range 37 East,
N.M.P.M., Lea County, New Mexico.

basin
surveys
focused on excellence
in the oilfield

P.O. Box 1786
1120 N. West County Rd.
Hobbs, New Mexico 88241
(575) 393-7315 - Office
(575) 392-2206 - Fax
basinsurveys.com

W.O. Number: JMS 26499

Survey Date: 04-03-2012

Scale: 1" = 2 Miles

Date: 04-13-2012

APACHE
CORPORATION



STATE PA #8

Located 330' FSL and 1600' FWL
Section 18, Township 22 South, Range 37 East,
N.M.P.M., Lea County, New Mexico.

basin
surveys

focused on excellence
in the oilfield

P.O. Box 1786
1120 N. West County Rd.
Hobbs, New Mexico 88241
(575) 393-7316 - Office
(575) 392-2206 - Fax
basinsurveys.com

W.O. Number: JMS 26499

Scale: 1" = 2000'

YELLOW TINT - USA LAND
BLUE TINT - STATE LAND
NATURAL COLOR - FEE LAND

APACHE
CORPORATION