

DISTRICT I

1626 N. French Dr., Hobbs, NM 88240
Phone (575) 393-8191 Fax: (575) 393-8720

DISTRICT II

611 S. First St., Artesia, NM 88210
Phone (505) 746-1283 Fax: (505) 746-0720

DISTRICT III

1000 Rio Brazos Rd., Aztec, NM 87410
Phone (505) 394-6178 Fax: (505) 634-6170

DISTRICT IV

1220 S. St. Francis Dr., Santa Fe, NM 87505
Phone (505) 476-3450 Fax: (505) 476-3452

State of New Mexico
Energy, Minerals and Natural Resources Department

OIL CONSERVATION DIVISION

1220 South St. Francis Dr.
Santa Fe, New Mexico 87505

Form C-102

Revised August 1, 2011

Submit one copy to appropriate
District Office

WELL LOCATION AND ACREAGE DEDICATION PLAT

☐ AMENDED REPORT

API Number 30-025-40543	Pool Code 49210	Pool Name Paddock
Property Code 26487	Property Name STATE PA	Well Number 9
OGRIID No. 873	Operator Name APACHE CORPORATION	Elevation 3426'

Surface Location

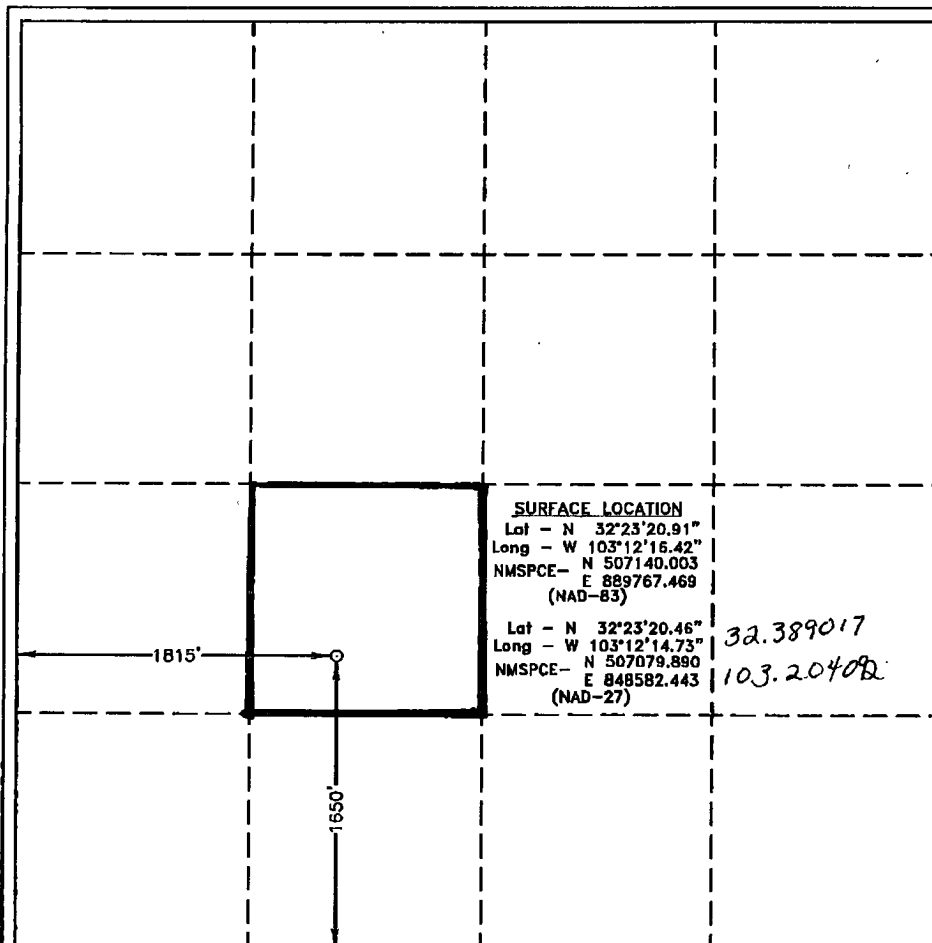
UL or lot No.	Section	Township	Range	Lot Idn	Feet from the	North/South line	Feet from the	East/West line	County
K	18	22 S	37 E		1650	SOUTH	1815	WEST	LEA

Bottom Hole Location If Different From Surface

UL or lot No.	Section	Township	Range	Lot Idn	Feet from the	North/South line	Feet from the	East/West line	County

Dedicated Acres 40	Joint or Infill	Consolidation Code	Order No.
-----------------------	-----------------	--------------------	-----------

NO ALLOWABLE WILL BE ASSIGNED TO THIS COMPLETION UNTIL ALL INTERESTS HAVE BEEN CONSOLIDATED
OR A NON-STANDARD UNIT HAS BEEN APPROVED BY THE DIVISION



OPERATOR CERTIFICATION

I hereby certify that the information contained herein is true and complete to the best of my knowledge and belief, and that this organization either owns a working interest or unleased mineral interest in the land including the proposed bottom hole location or has a right to drill this well at this location pursuant to a contract with an owner of such a mineral or working interest, or to a voluntary pooling agreement or a compulsory pooling order heretofore entered by the division.

Juan Blakemore 4/25/2012
Signature Date
Susan Blakemore
Printed Name
Susan.blakemore@apachecorp.com
Email Address

SURVEYOR CERTIFICATION

I hereby certify that the well location shown on this plat was plotted from field notes of actual surveys made by me or under my supervision, and that the same is true and correct to the best of my belief.

Date Surveyed
Signature & Seal of Professional Surveyor
Gary L. Jones
Professional Surveyor No. 26500

Certificate No. Gary L. Jones 7977

BASIN SURVEYS 26500

DISTRICT I

1625 N. French Dr., Hobbs, NM 88240
Phone (575) 892-8161 Fax: (575) 393-0720

DISTRICT II

811 S. First St., Artesia, NM 88210
Phone (575) 748-1263 Fax: (575) 748-0720

DISTRICT III

1000 Rio Brazos Rd., Aztec, NM 87410
Phone (505) 334-0175 Fax: (505) 334-0170

DISTRICT IV

1220 S. St. Francis Dr., Santa Fe, NM 87505
Phone (505) 476-3480 Fax: (505) 476-3482

State of New Mexico
Energy, Minerals and Natural Resources Department

OIL CONSERVATION DIVISION

1220 South St. Francis Dr.
Santa Fe, New Mexico 87505

Form C-102

Revised August 1, 2011

Submit one copy to appropriate
District Office

WELL LOCATION AND ACREAGE DEDICATION PLAT

☐ AMENDED REPORT

API Number 30-025-40543	Pool Code 6660	Pool Name Blinsbury Oil and Gas (Oil)
Property Code 26487	Property Name STATE PA	Well Number 9
OGRID No. 873	Operator Name APACHE CORPORATION	Elevation 3426'

Surface Location

UL or lot No.	Section	Township	Range	Lot Ida	Feet from the	North/South line	Feet from the	East/West line	County
K	18	22 S	37 E		1650	SOUTH	1815	WEST	LEA

Bottom Hole Location If Different From Surface

UL or lot No.	Section	Township	Range	Lot Ida	Feet from the	North/South line	Feet from the	East/West line	County
Dedicated Acres 40	Joint or Infill	Consolidation Code	Order No.						

NO ALLOWABLE WILL BE ASSIGNED TO THIS COMPLETION UNTIL ALL INTERESTS HAVE BEEN CONSOLIDATED
OR A NON-STANDARD UNIT HAS BEEN APPROVED BY THE DIVISION

	<p>OPERATOR CERTIFICATION</p> <p>I hereby certify that the information contained herein is true and complete to the best of my knowledge and belief, and that this organization either owns a working interest or undivided mineral interest in the land including the proposed bottom hole location or has a right to drill this well at this location pursuant to a contract with an owner of such a mineral or working interest, or to a voluntary pooling agreement or a compulsory pooling order heretofore entered by the division.</p> <p><i>Susan Blakemore</i> 4/25/2012 Signature Date</p> <p><i>Susan Blakemore</i> Printed Name</p> <p><i>susan.blakemore@apachecorp.com</i> Email Address</p>
	<p>SURVEYOR CERTIFICATION</p> <p>I hereby certify that the well location shown on this plat was plotted from field notes of actual surveys made by me or under my supervision and that the same is true and correct to the best of my belief.</p> <p><i>Gary L. Jones</i> Date Surveyed Signature & Seal of Professional Surveyor</p> <p>Certificate No. Gary L. Jones 7977</p> <p>BASIN SURVEYS 26500</p>

DISTRICT I

1625 N. French Dr., Hobbs, NM 88240
Phone (505) 893-8181 Fax: (505) 395-0720

DISTRICT II

611 S. First St., Artesia, NM 88210
Phone (505) 746-1283 Fax: (505) 746-0720

DISTRICT III

1000 Rio Brazos Rd., Aztec, NM 87410
Phone (505) 354-6178 Fax: (505) 354-6178

DISTRICT IV

1820 S. St. Francis Dr., Santa Fe, NM 87505
Phone (505) 470-3480 Fax: (505) 470-3482

State of New Mexico
Energy, Minerals and Natural Resources Department

OIL CONSERVATION DIVISION

1220 South St. Francis Dr.
Santa Fe, New Mexico 87505

Form C-102

Revised August 1, 2011

Submit one copy to appropriate
District Office

WELL LOCATION AND ACREAGE DEDICATION PLAT☐ AMENDED REPORT

API Number 30-025- 40543	Pool Code 60240	Pool Name Tulb Oil and Gas (Oil)
Property Code 26487	Property Name STATE PA	Well Number 9
OGRID No. 873	Operator Name APACHE CORPORATION	Elevation 3426'

Surface Location

UL or lot No.	Section	Township	Range	Lot Idn	Feet from the	North/South line	Feet from the	East/West line	County
K	18	22 S	37 E		1650	SOUTH	1815	WEST	LEA

Bottom Hole Location If Different From Surface

UL or lot No.	Section	Township	Range	Lot Idn	Feet from the	North/South line	Feet from the	East/West line	County

Dedicated Acres 40	Joint or Infill	Consolidation Code	Order No.
------------------------------	-----------------	--------------------	-----------

**NO ALLOWABLE WELL BE ASSIGNED TO THIS COMPLETION UNTIL ALL INTERESTS HAVE BEEN CONSOLIDATED
OR A NON-STANDARD UNIT HAS BEEN APPROVED BY THE DIVISION**

	SURFACE LOCATION Lat - N 32°23'20.91" Long - W 103°12'16.42" NAD83 NADSPCE- N 507140.003 E 889787.469 (NAD-83) Lat - N 32°23'20.48" Long - W 103°12'14.73" NADSPCE- N 507079.890 E 848582.443 (NAD-27)	OPERATOR CERTIFICATION I hereby certify that the information contained herein is true and complete to the best of my knowledge and belief, and that this organization either owns a working interest or unleased mineral interest in the land including the proposed bottom hole location or has a right to drill this well at this location pursuant to a contract with an owner of such a mineral or working interest, or to a voluntary pooling agreement or a compulsory pooling order heretofore entered by the division. Signature <u>Susan Blakemore</u> Date <u>4/25/2012</u> Printed Name <u>Susan Blakemore</u> Email Address <u>susan.blakemore@apache.com</u>
	SURVEYOR CERTIFICATION I hereby certify that the well location shown on this plat was plotted from field notes of actual surveys made by me or under my supervision, and that the same is true and correct to the best of my belief. Date Surveyed _____ Signature of Professional Surveyor _____ Certificate No. Gary L. Jones 7977 BASIN SURVEYS 26500	

DISTRICT I1625 N. French Dr., Hobbs, NM 88240
Phone (505) 593-8101 Fax (505) 593-0720**DISTRICT II**811 S. First St., Artesia, NM 88210
Phone (505) 746-1253 Fax (505) 746-0720**DISTRICT III**1000 Rio Brazos Rd., Aztec, NM 87410
Phone (505) 394-6178 Fax (505) 394-6178**DISTRICT IV**1220 S. St. Francis Dr., Santa Fe, NM 87505
Phone (505) 878-3460 Fax (505) 476-3482State of New Mexico
Energy, Minerals and Natural Resources DepartmentForm C-102
Revised August 1, 2011Submit one copy to appropriate
District Office**OIL CONSERVATION DIVISION**1220 South St. Francis Dr.
Santa Fe, New Mexico 87505**WELL LOCATION AND ACREAGE DEDICATION PLAT**☐ AMENDED REPORT

API Number 30-025-40543	Pool Code 19190	Pool Name Drinkard
Property Code 26487	Property Name STATE PA	Well Number 9
OGRID No. 873	Operator Name APACHE CORPORATION	Elevation 3426'

Surface Location

UL or lot No.	Section	Township	Range	Lot Idn	Feet from the	North/South line	Feet from the	East/West line	County
K	18	22 S	37 E		1650	SOUTH	1815	WEST	LEA

Bottom Hole Location If Different From Surface

UL or lot No.	Section	Township	Range	Lot Idn	Feet from the	North/South line	Feet from the	East/West line	County

Dedicated Acres 40	Joint or Infill	Consolidation Code	Order No.
-----------------------	-----------------	--------------------	-----------

NO ALLOWABLE WILL BE ASSIGNED TO THIS COMPLETION UNTIL ALL INTERESTS HAVE BEEN CONSOLIDATED
OR A NON-STANDARD UNIT HAS BEEN APPROVED BY THE DIVISION

	SURFACE LOCATION Lat - N 32°23'20.91" Long - W 103°12'16.42" NMSPCE- N 507140.003 E 889767.469 (NAD-83) Lat - N 32°23'20.46" Long - W 103°12'14.73" NMSPCE- N 507079.890 E 848582.443 (NAD-27)	OPERATOR CERTIFICATION I hereby certify that the information contained herein is true and complete to the best of my knowledge and belief, and that this organization either owns a working interest or unleased mineral interest in the land including the proposed bottom hole location or has a right to drill this well at this location pursuant to a contract with an owner of such a mineral or working interest, or to a voluntary pooling agreement or a compulsory pooling order heretofore entered by the division. Susan Blakemore 4/25/2012 Signature Date Susan Blakemore Printed Name Susan.Blakemore@apachecorp.com Email Address
	SURVEYOR CERTIFICATION I hereby certify that the well location shown on this plat was plotted from field notes of actual surveys made by me or under my supervision, and that the same is true and correct to the best of my belief.	
	Certificate No. Gary L. Jones 7977 BASIN SURVEYS 26500	

DISTRICT I1625 N. French Dr., Hobbs, NM 88240
Phone (505) 333-8181 Fax (505) 333-0720**DISTRICT II**811 S. First St., Artesia, NM 88210
Phone (505) 746-1223 Fax (505) 746-0720**DISTRICT III**1000 Rio Brazos Rd., Aztec, NM 87410
Phone (505) 334-6178 Fax (505) 334-6170**DISTRICT IV**1220 S. St. Francis Dr., Santa Fe, NM 87508
Phone (505) 496-3480 Fax (505) 476-3483**State of New Mexico**
Energy, Minerals and Natural Resources Department

Form C-102

Revised August 1, 2011

Submit one copy to appropriate
District Office**OIL CONSERVATION DIVISION**1220 South St. Francis Dr.
Santa Fe, New Mexico 87505**WELL LOCATION AND ACREAGE DEDICATION PLAT**☐ AMENDED REPORT

API Number 30-025-40543	Pool Code 62700	Pool Name Wantz; Abo
Property Code 26487	Property Name STATE PA	Well Number 9
OGRID No. 873	Operator Name APACHE CORPORATION	Elevation 3426'

Surface Location

UL or lot No.	Section	Township	Range	Lot Idn	Feet from the	North/South line	Feet from the	East/West line	County
K	18	22 S	37 E		1650	SOUTH	1815	WEST	LEA

Bottom Hole Location If Different From Surface

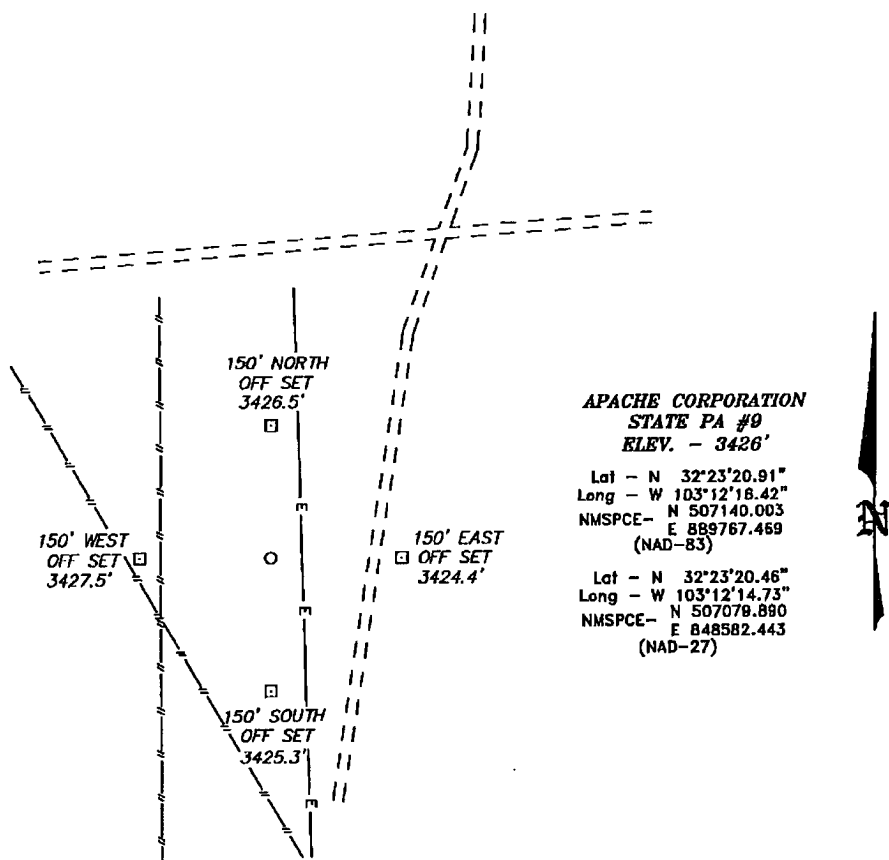
UL or lot No.	Section	Township	Range	Lot Idn	Feet from the	North/South line	Feet from the	East/West line	County

Dedicated Acres 40	Joint or Infill	Consolidation Code	Order No.
-----------------------	-----------------	--------------------	-----------

NO ALLOWABLE WELL BE ASSIGNED TO THIS COMPLETION UNTIL ALL INTERESTS HAVE BEEN CONSOLIDATED
OR A NON-STANDARD UNIT HAS BEEN APPROVED BY THE DIVISION

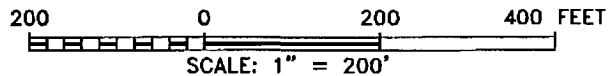
	SURFACE LOCATION Lat - N 32°23'20.91" Long - W 103°12'16.42" NAD83 NADSPCE - E 889767.469 (NAD-83) Lat - N 32°23'20.46" Long - W 103°12'14.73" NAD83 NADSPCE - E 848582.443 (NAD-27)	OPERATOR CERTIFICATION I hereby certify that the information contained herein is true and complete to the best of my knowledge and belief, and that this organization either owns a working interest or unleased mineral interest in the land including the proposed bottom hole location or has a right to drill this well at this location pursuant to a contract with an owner of such a mineral or working interest, or to a voluntary pooling agreement or a compulsory pooling order heretofore entered by the division. Susan Blakemore 4/25/2012 Signature Date Susan Blakemore Printed Name Susan.blakemore@apachecorp.com Email Address
	SURVEYOR CERTIFICATION I hereby certify that the well location shown on this plat was plotted from field notes of actual surveys made by me or under my supervision and that the same is true and correct to the best of my belief.	
	Certificate No. Gary L. Jones 7977 BASIN SURVEYS 26500	

**SECTION 18, TOWNSHIP 22 SOUTH, RANGE 37 EAST, N.M.P.M.,
LEA COUNTY, NEW MEXICO.**



Directions to Location:

FROM THE JUNCTION OF LEGION AND DELAWARE, GO WEST ON DELAWARE 1.3 MILES TO LEASE ROAD, ON LEASE ROAD GO SOUTH 0.6 MILES TO LEASE ROAD, ON LEASE ROAD GO WEST 0.2 MILES TO PROPOSED LOCATION.



APACHE CORPORATION

REF: STATE PA #9 / WELL PAD TOPO

THE STATE PA #9 LOCATED 1650'

FROM THE SOUTH LINE AND 1815' FROM THE WEST LINE OF
SECTION 18, TOWNSHIP 22 SOUTH, RANGE 37 EAST,

N.M.P.M., LEA COUNTY, NEW MEXICO.

BASIN SURVEYS P.O. BOX 1786 - HOBBS, NEW MEXICO

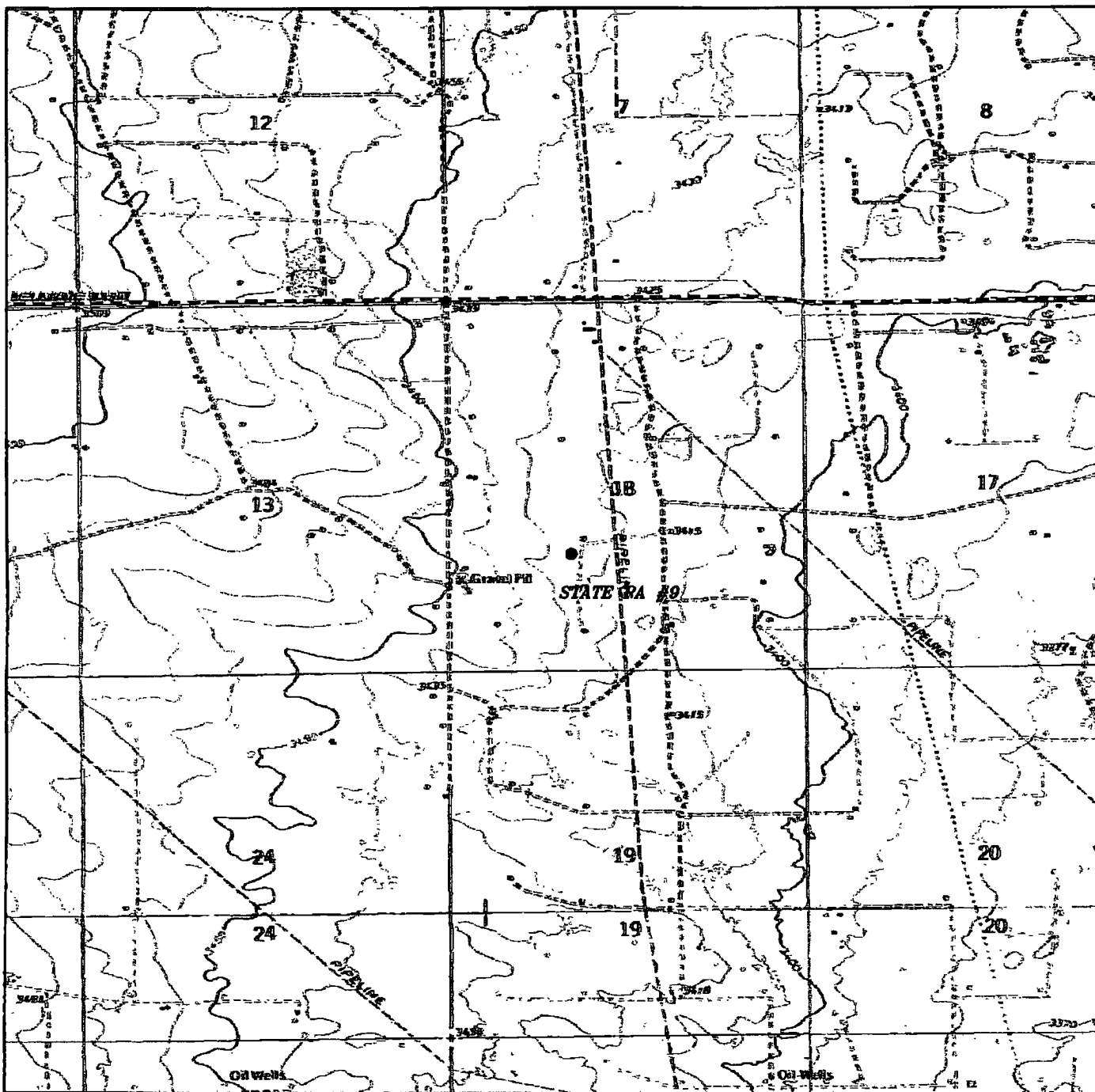
W.O. Number: 26500

Drawn By: J. SMALL

Date: 04-13-2012 Disk: JMS 26500

Survey Date: 04-03-2012

Sheet 1 of 1 Sheets



STATE PA #9
 Located 1650' FSL and 1815' FWL
 Section 18, Township 22 South, Range 37 East,
 N.M.P.M., Lea County, New Mexico.

basin
surveys

focused on excellence
 in the oilfield

P.O. Box 1786
 1120 N. West County Rd.
 Hobbs, New Mexico 88241
 (575) 393-7316 - Office
 (575) 392-2206 - Fax
 basinsurveys.com

W.O. Number: JMS 26500

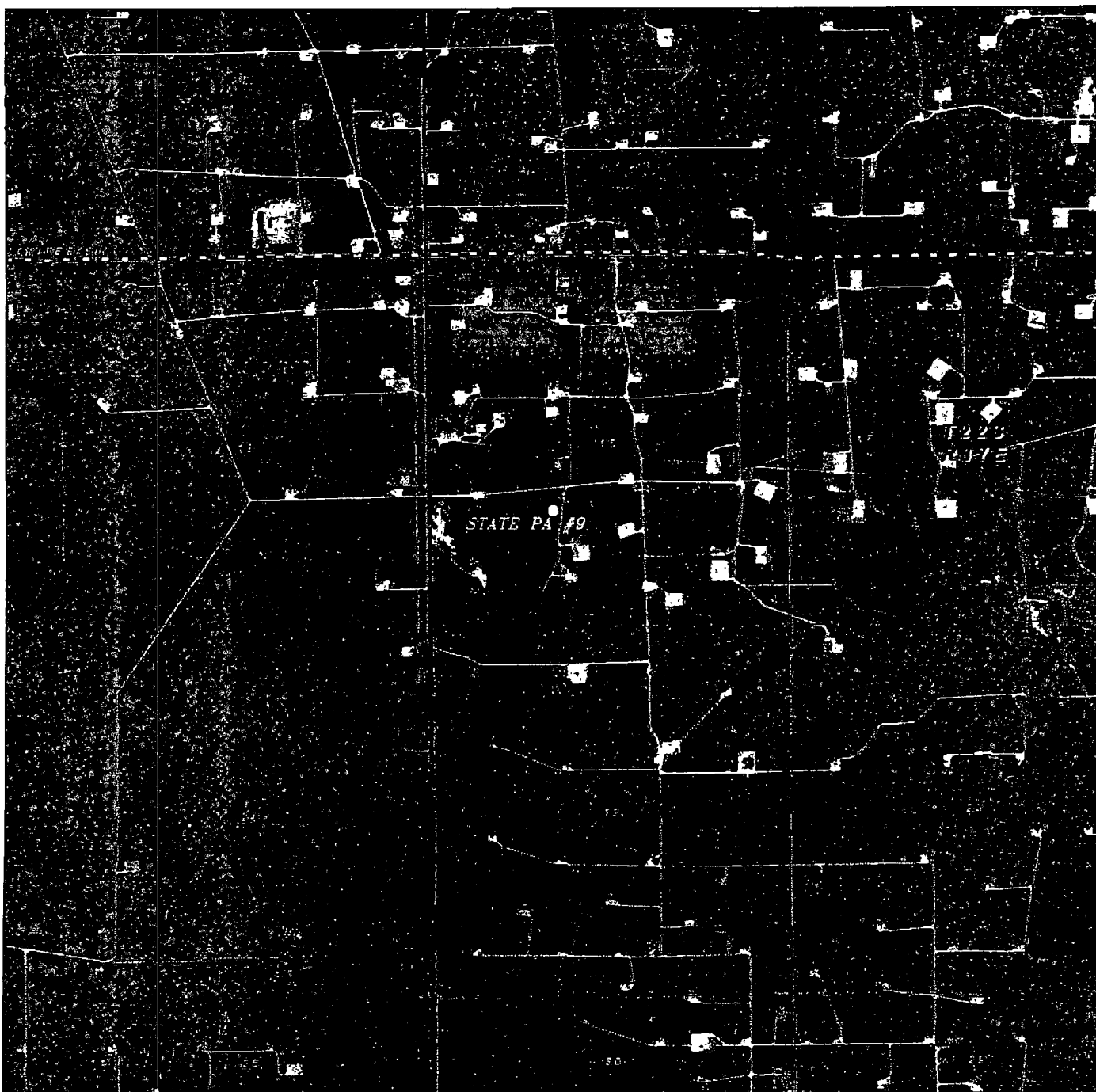
Survey Date: 04-03-2012

Scale: 1" = 2000'

Date: 04-13-2012

APACHE
 CORPORATION

APACHE
CORPORATION



STATE PA #9

Located 1650' FSL and 1815' FWL

Section 18, Township 22 South, Range 37 East,
N.M.P.M., Lea County, New Mexico.

basin
surveys

focused on excellence
in the oilfield

P.O. Box 1786
1120 N. West County Rd.
Hobbs, New Mexico 88241
(575) 393-7316 - Office
(575) 392-2206 - Fax
basinsurveys.com

W.O. Number: JMS 26500

Scale: 1" = 2000'

YELLOW TINT - USA LAND
BLUE TINT - STATE LAND
NATURAL COLOR - FEE LAND

APACHE
CORPORATION