

Submit 3 Copies To Appropriate District  
Office  
District I  
1625 N. French Dr., Hobbs, NM 88240  
District II  
1301 W. Grand Ave., Artesia, NM 88210  
District III  
1000 Rio Brazos Rd., Aztec, NM 87410  
District IV  
1220 S. St. Francis Dr., Santa Fe, NM 87505

State of New Mexico

Energy, Minerals and Natural Resources

HOBBS OCE

APR 23 2009

WELL CONSERVATION DIVISION

1220 South St. Francis Dr.

Santa Fe, NM 87505

RECEIVED

Form C-103

October 13, 2009

WELL API NO. 30-025-8404
5. Indicate Type of Lease STATE <input checked="" type="checkbox"/> FEE <input type="checkbox"/>
6. State Oil & Gas Lease No.
7. Lease Name or Unit Agreement Name State ECC
8. Well Number 1
9. OGRID Number 164070
10. Pool name or Wildcat Caprock: Wolfcamp, East

SUNDRY NOTICES AND REPORTS ON WELLS (DO NOT USE THIS FORM FOR PROPOSALS TO DRILL OR TO DEEPEN OR PLUG BACK TO A DIFFERENT RESERVOIR. USE "APPLICATION FOR PERMIT" (FORM C-101) FOR SUCH PROPOSALS.)	
1. Type of Well: Oil Well <input checked="" type="checkbox"/> Gas Well <input type="checkbox"/> Other - <del>SWD</del>	
2. Name of Operator PALADIN ENERGY CORP.	
3. Address of Operator 10290 Monroe Drive, Suite 301, Dallas, Texas 75229	
4. Well Location Unit Letter <u>G</u> : <u>1980</u> feet from the <u>North</u> line and <u>1980</u> feet from the <u>East</u> line Section <u>11</u> Township <u>12S</u> Range <u>32E</u> NMPM Lea County	
11. Elevation (Show whether DR, RKB, RT, GR, etc.) 4361' RKB	

12. Check Appropriate Box to Indicate Nature of Notice, Report or Other Data

NOTICE OF INTENTION TO:

PERFORM REMEDIAL WORK ☐ PLUG AND ABANDON ☒  
TEMPORARILY ABANDON ☐ CHANGE PLANS ☐  
PULL OR ALTER CASING ☐ MULTIPLE COMPL ☐  
DOWNHOLE COMMINGLE ☐

SUBSEQUENT REPORT OF:

REMEDIAL WORK ☐ ALTERING CASING ☐  
COMMENCE DRILLING OPNS. ☐ P AND A ☐  
CASING/CEMENT JOB ☐

OTHER: ☐

OTHER: ☐

13. Describe proposed or completed operations. (Clearly state all pertinent details, and give pertinent dates, including estimated date of starting any proposed work). SEE RULE 1103. For Multiple Completions: Attach wellbore diagram of proposed completion or recompletion.

- 1.) MIRU, GIH with 2-7/8" tubing and pump 1<sup>st</sup> plug with 100' of cement from 9,100-200'. CIBP at 9,500' with 36' of cement on top (Stuck tubing and bad casing at around 9,550'). WOC. Tag cement. Set 2<sup>nd</sup> plug with 100' cement from 6,500'-6,700', WOC, tag plug. (WOLFCAMP PERFS) SPOT 25 SX
- 2.) Cut 5-1/2" casing at 4,500' or deepest free point and pull. GIH w/ 2-7/8" tubing and set 3rd plug with 200' cement stub plug in and out of 5-1/2" casing, from 4,400' to 4,600' with 50 sacks class C cement. WOC. Tag plug at 4,400'. Set 4th plug with 200' cement stub plug in and out of 8-5/8" casing from 3,500-3,700' with 50 sacks class H cement. WOC. Tag plug at 3,500'. SPOT 25 SX
- 3.) Perforate 8-5/8" casing at 1,600' for squeeze. GBH with tubing and packer, squeeze perfs and set 5<sup>th</sup> w/ 40 SX plug, 100' cement plug from 1,500' to 1,600' in 5-1/2" casing. POOH with tubing and packer, WOC. SPOT 25 SX
- 4.) Perforate 8-5/8" casing at 250', set 6" pump plug with 50 sacks from 350-350'. TAG @ 150'
- 5.) Circulate cement to surface and fill casing from 60' to surface with class C cement. WOC. Tag plug. Peff
- 6.) Cut all casing 3' below mud line. Backfill, set P&A marker, clear location.

Spud Date:

Rig Release I

The Oil Conservation Division Must be notified 24 hours prior to the beginning of plugging operations.

I hereby certify that the information above is true and complete to the best of my knowledge and belief.

SIGNATURE

David Plaisance

TITLE

V.P. Exploration & Production

DATE

4/18/2012

Type or print name

E-mail address:

dplaisance@paladinenergy.com

PHONE:

214-654-0132

For State Use Only

APPROVED BY:

TITLE

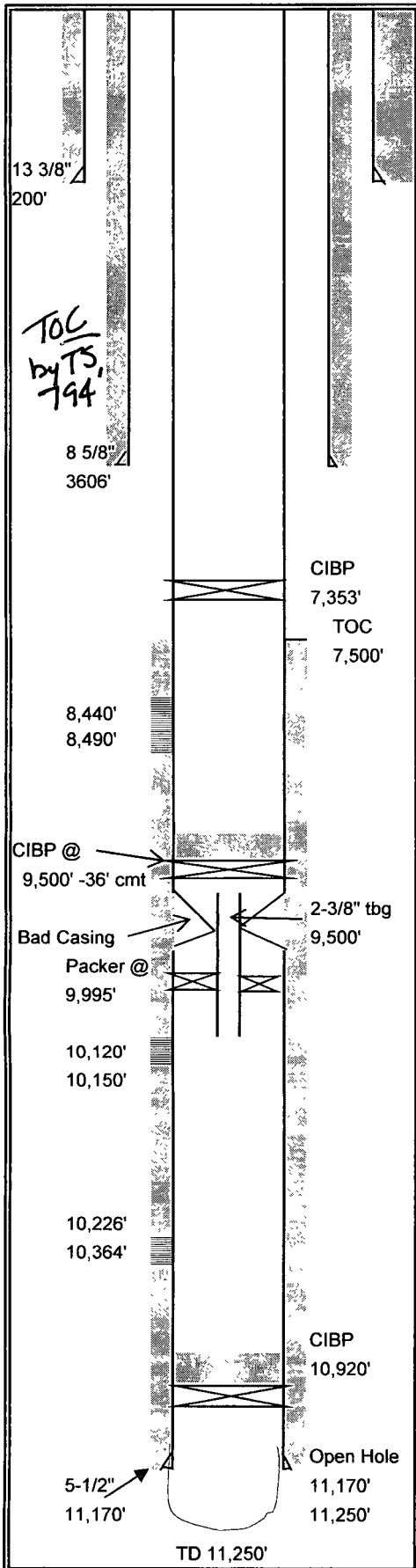
Compliance Officer

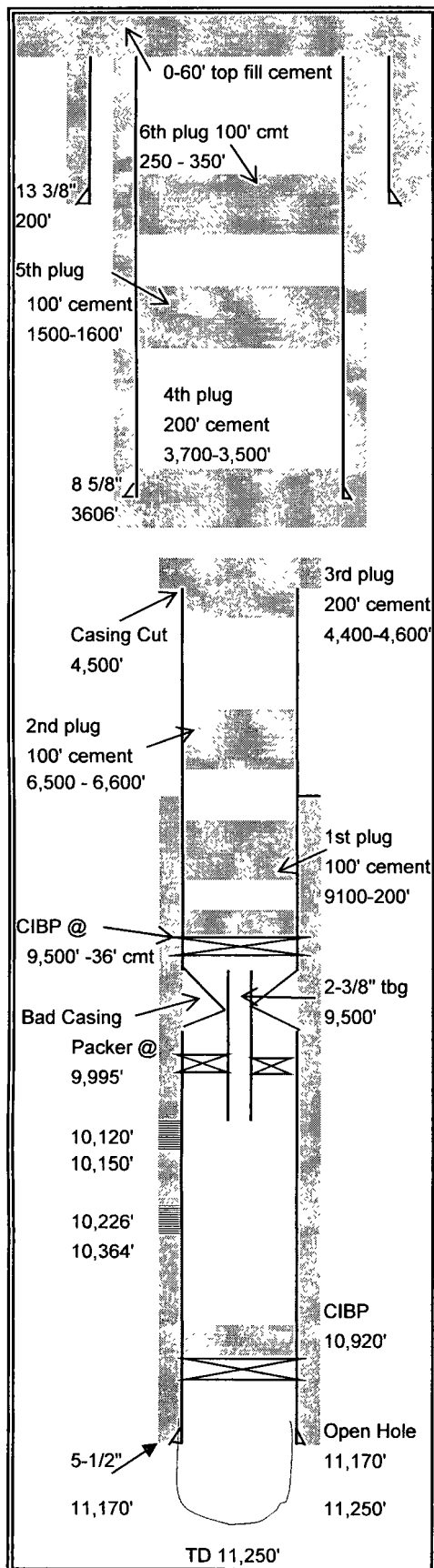
DATE

04-27-2012

Conditions of Approval (if any):

## Date:





**Lease:** State ECC      **Well:** #1      **API #** 30-025-00104  
**Field:** East Caprock      **County:** Lea      **State** New Mexico  
**Section** 11      **Township** 12-S      **Range** 32-E  
**Elev. GL** \_\_\_\_\_      **Elev DF** \_\_\_\_\_      **Elev. KB** 4361'  
**Spudded** 9/9/1951      **Completed** 12/27/1951      1980' FN&EL

Surface Casing	13 3/8" OD	48#	Grade	Armco SJ, SW
	Set @	200'	Hole Size	17 1/2"
	TOC	Sur.	Sacks	225
Intermediate Casing	8 5/8" OD	36#/Ft	Grade	J-55
	Set @	3606'	Hole Size	11"
	TOC		Sacks	1,500

Production Casing	5-1/2"	17 & 20#/Ft.	Grade	J-55, N-80
	Set @	11,170'	Hole Size	7-7/8"
	TOC	7,340'	Sacks	600

Liner Record	OD	#/Ft.	Grade	
	Top @		Bottom @	
	Screen		Hole Size	
	TOC		Sacks	

Tubing Detail		Grade/Trd.	
	Pkr. Set @	EOT	
	Nipples		
	Anchors		Rods

Perforation Record		
	8,440-490'	Wolfcamp
Current Perfs.	10,120-150'	Atoka
	10,226-364'	Mississippian
	Open hole 11,170-250'	Devonian

**Proposed Plugs**

1st - 100' cement	9,100-9,200'
2nd - 100' cement	6,500-6,600"
3rd - 200' cement	4,400-4,600'
4th- 200' cement	3,500'-3,700'
5th - 100' cement	1,500-1,600"
6th- 100' cement	250-350'
Surface - 60' cement	0-60'

Comments: \_\_\_\_\_

## PROPOSED PLUG & ABANDONMENT