

District I  
1625 N. French Dr., Hobbs, NM 88240  
District II  
1301 W. Grand Avenue, Artesia, NM 88210  
District III  
1000 Rio Brazos Rd., Aztec, NM 87410  
District IV  
1220 S. St. Francis Dr., Santa Fe, NM 87505

State of New Mexico  
Energy, Minerals & Natural Resources Department  
OIL CONSERVATION DIVISION  
1220 South St. Francis Dr.  
Santa Fe, NM 87505

Form C-102  
Revised October 15, 2009  
Submit one copy to appropriate  
District Office  
☐ AMENDED REPORT

WELL LOCATION AND ACREAGE DEDICATION PLAT

<sup>1</sup> API Number <b>30-025-40549</b>	<sup>2</sup> Pool Code <b>55610</b>	<sup>3</sup> Pool Name <b>Scharb ; CORBIN BONE SPRING</b>
<sup>4</sup> Property Code <b>38904</b>	<sup>5</sup> Property Name <b>PLAYA 2 STATE</b>	<sup>6</sup> Well Number <b>2H</b>
<sup>7</sup> OGRID No. <b>6137</b>	<sup>8</sup> Operator Name <b>DEVON ENERGY PRODUCTION COMPANY, L.P.</b>	<sup>9</sup> Elevation <b>3984.6</b>

<sup>10</sup> Surface Location

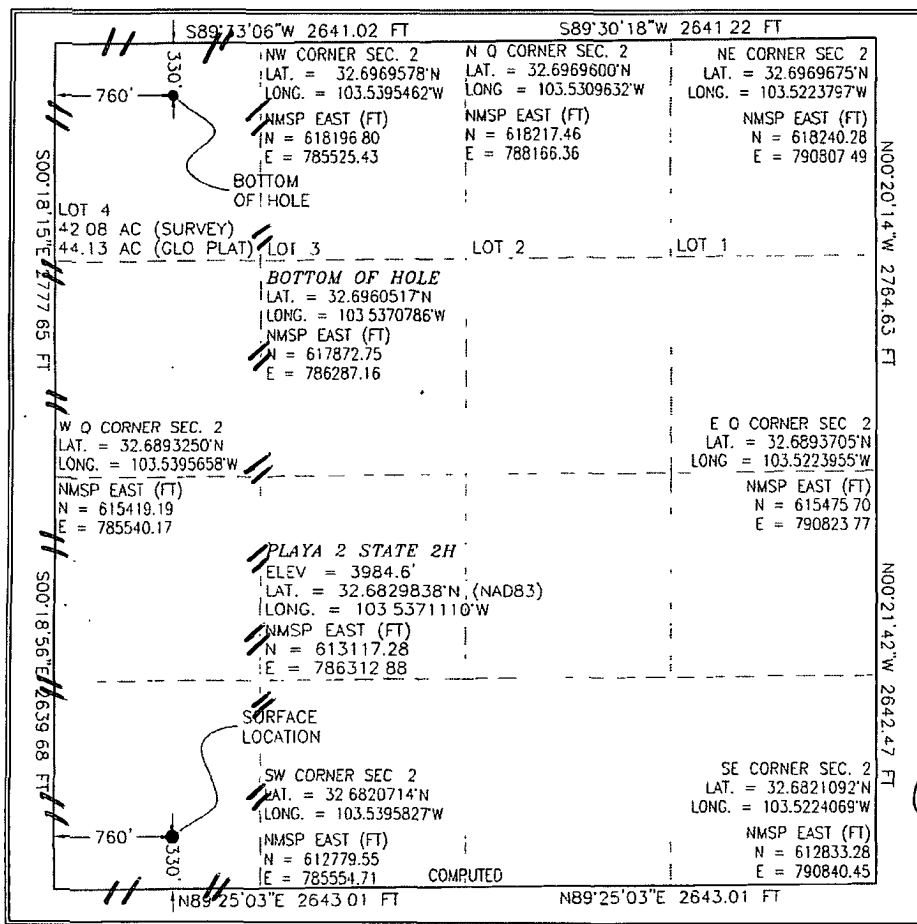
UL or lot no.	Section	Township	Range	Lot Idn	Feet from the	North/South line	Feet from the	East/West line	County
M	2	19 S	34 E		330	SOUTH	760	WEST	LEA

<sup>11</sup> Bottom Hole Location If Different From Surface

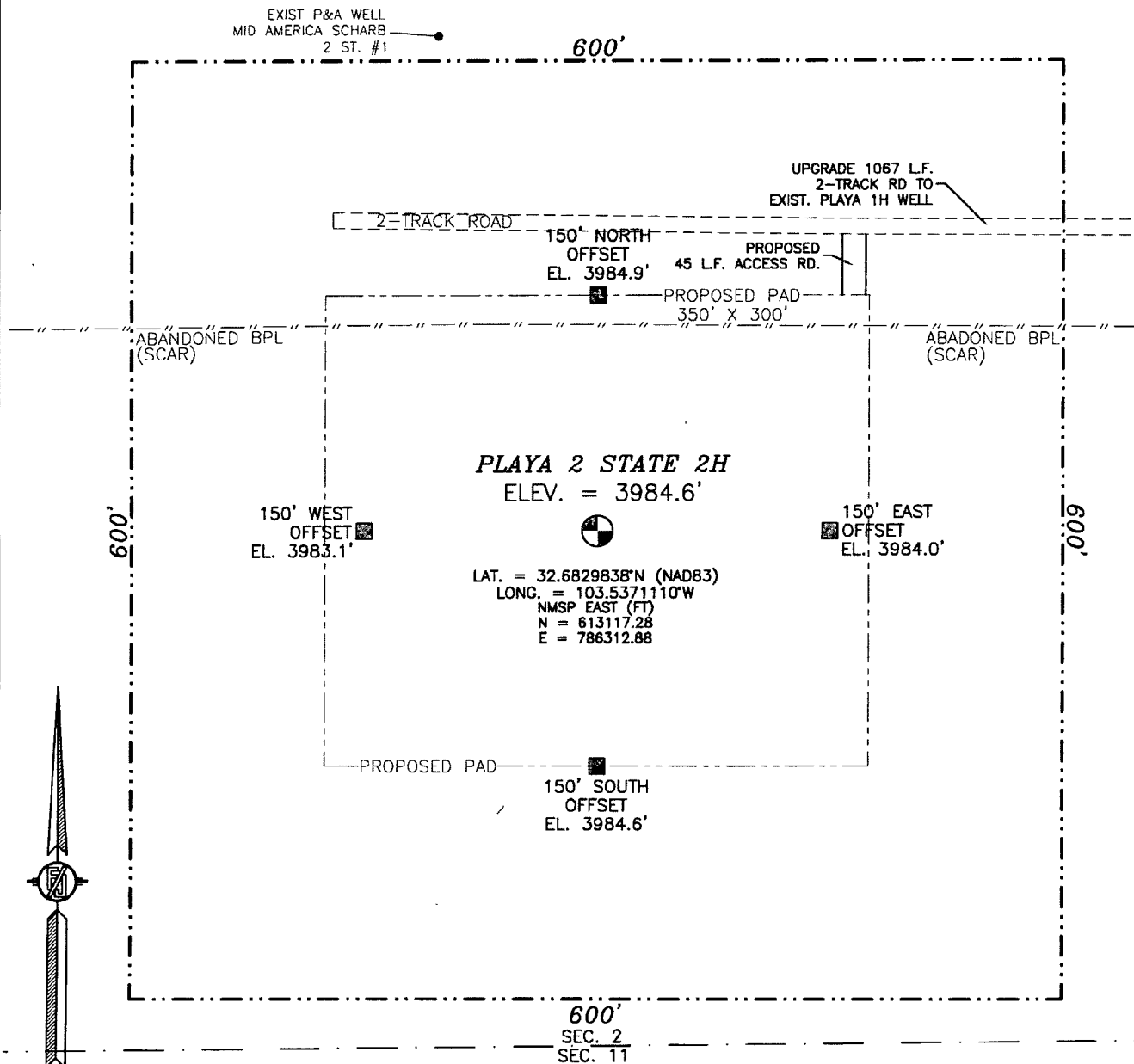
UL or lot no.	Section	Township	Range	Lot Idn	Feet from the	North/South line	Feet from the	East/West line	County
4	2	19 S	34 E		330	NORTH	760	WEST	LEA

<sup>12</sup> Dedicated Acres 164.13	<sup>13</sup> Joint or Infill	<sup>14</sup> Consolidation Code	<sup>15</sup> Order No.
---	-------------------------------	----------------------------------	-------------------------

No allowable will be assigned to this completion until all interests have been consolidated or a non-standard unit has been approved by the division.

	<p><b>17 OPERATOR CERTIFICATION</b></p> <p>I hereby certify that the information contained herein is true and complete to the best of my knowledge and belief, and that this organization either owns a working interest or unleased mineral interest in the land including the proposed bottom hole location or has a right to drill this well at this location pursuant to a contract with an owner of such a mineral or working interest or to a voluntary pooling agreement or a compulsory pooling order heretofore entered by the division</p> <p><i>[Signature]</i> 4/25/2012 Signature Date</p> <p>Printed Name DAVID H. COOK REGULATORY SPECIALIST</p> <p><b>18 SURVEYOR CERTIFICATION</b></p> <p>I hereby certify that the well location shown on this plat was plotted from field notes of actual surveys made by me or under my supervision and that the same is true and correct to the best of my belief</p> <p>ARRH/10. 2012 Date of Survey</p> <p><i>[Signature]</i> Signature and Seal of Professional Surveyor.</p> <p>Certificate Number 1411 MONY JARAMILLO, PLS 12797 SURVEY NO 874</p>
---	--

SECTION 2, TOWNSHIP 19 SOUTH, RANGE 34 EAST, N.M.P.M.  
LEA COUNTY, STATE OF NEW MEXICO



010 50 100 200

SCALE 1" = 100'

DIRECTIONS TO LOCATION

FROM MILE MARKER 23 ON STATE ROAD 529 GO EAST ABOUT 200 FT. ON SR 529 TO TURN SOUTH ON CALICHE ROAD ACROSS FROM VAN NOY ROAD GO SOUTH ON CALICHE ROAD 1 MILE TO A CALICHE RD ON RIGHT WEST GO 0.13 MILES TO PLAYA 2 STATE #1H PAD AT NORTHWEST CORNER OF PAD TAKE 2-TRACK RD. WEST 0.2 MILE SITE IS ABOUT 200 FT. ON LEFT (SOUTH)

DEVON ENERGY PRODUCTION COMPANY, L.P.  
PLAYA 2 STATE 2H

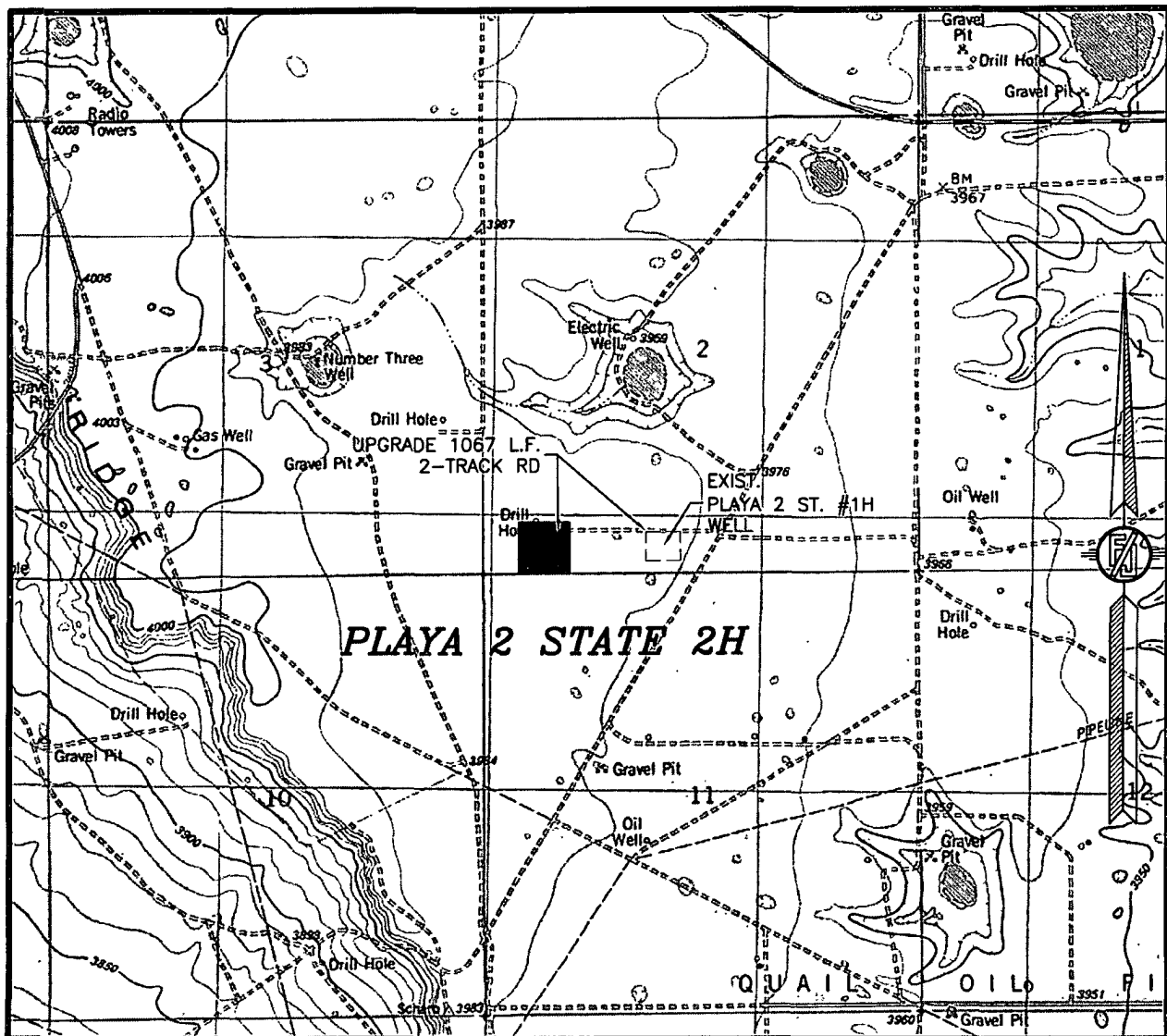
LOCATED 330 FT. FROM THE SOUTH LINE  
AND 760 FT. FROM THE WEST LINE OF  
SECTION 2, TOWNSHIP 19 SOUTH,  
RANGE 34 EAST, N.M.P.M.  
LEA COUNTY, STATE OF NEW MEXICO

APRIL 10, 2012

SURVEY NO. 874

MADRON SURVEYING, INC. 301 SOUTH CANAL (575) 234-3341 CARLSBAD, NEW MEXICO

SECTION 2, TOWNSHIP 19 SOUTH, RANGE 34 EAST, N.M.P.M.  
LEA COUNTY, STATE OF NEW MEXICO  
LOCATION VERIFICATION MAP



USGS QUAD MAP:  
IRON HOUSE WELL

NOT TO SCALE

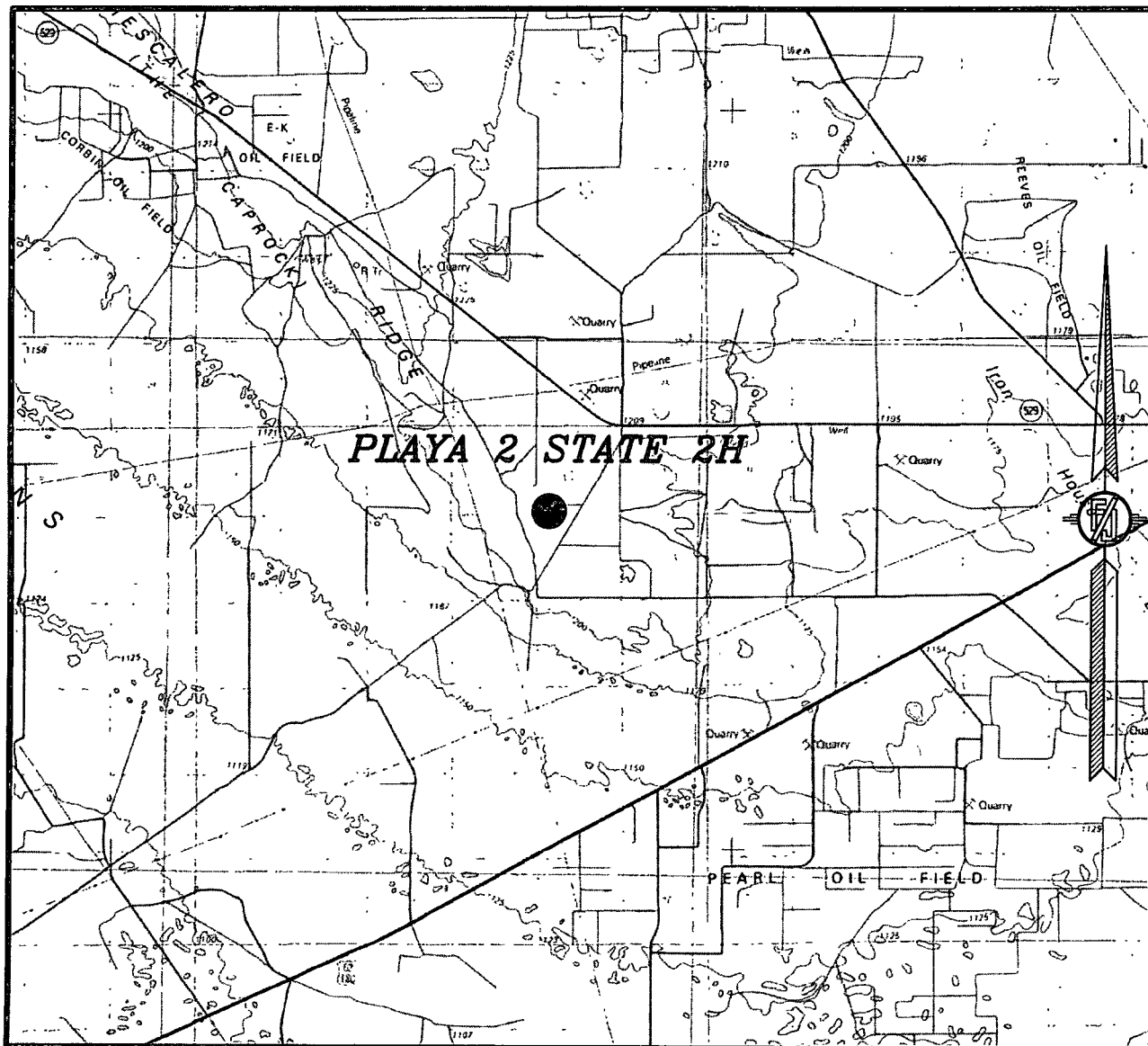
DEVON ENERGY PRODUCTION COMPANY, L.P.  
PLAYA 2 STATE 2H  
LOCATED 330 FT. FROM THE SOUTH LINE  
AND 760 FT. FROM THE WEST LINE OF  
SECTION 2, TOWNSHIP 19 SOUTH,  
RANGE 34 EAST, N.M.P.M.  
LEA COUNTY, STATE OF NEW MEXICO

APRIL 10, 2012

SURVEY NO. 874

MADRON SURVEYING, INC. 301 SOUTH CANAL CARLSBAD, NEW MEXICO  
(575) 234-3341

SECTION 2, TOWNSHIP 19 SOUTH, RANGE 34 EAST, N.M.P.M.  
LEA COUNTY, STATE OF NEW MEXICO  
VICINITY MAP



NOT TO SCALE

DEVON ENERGY PRODUCTION COMPANY, L.P.

PLAYA 2 STATE 2H

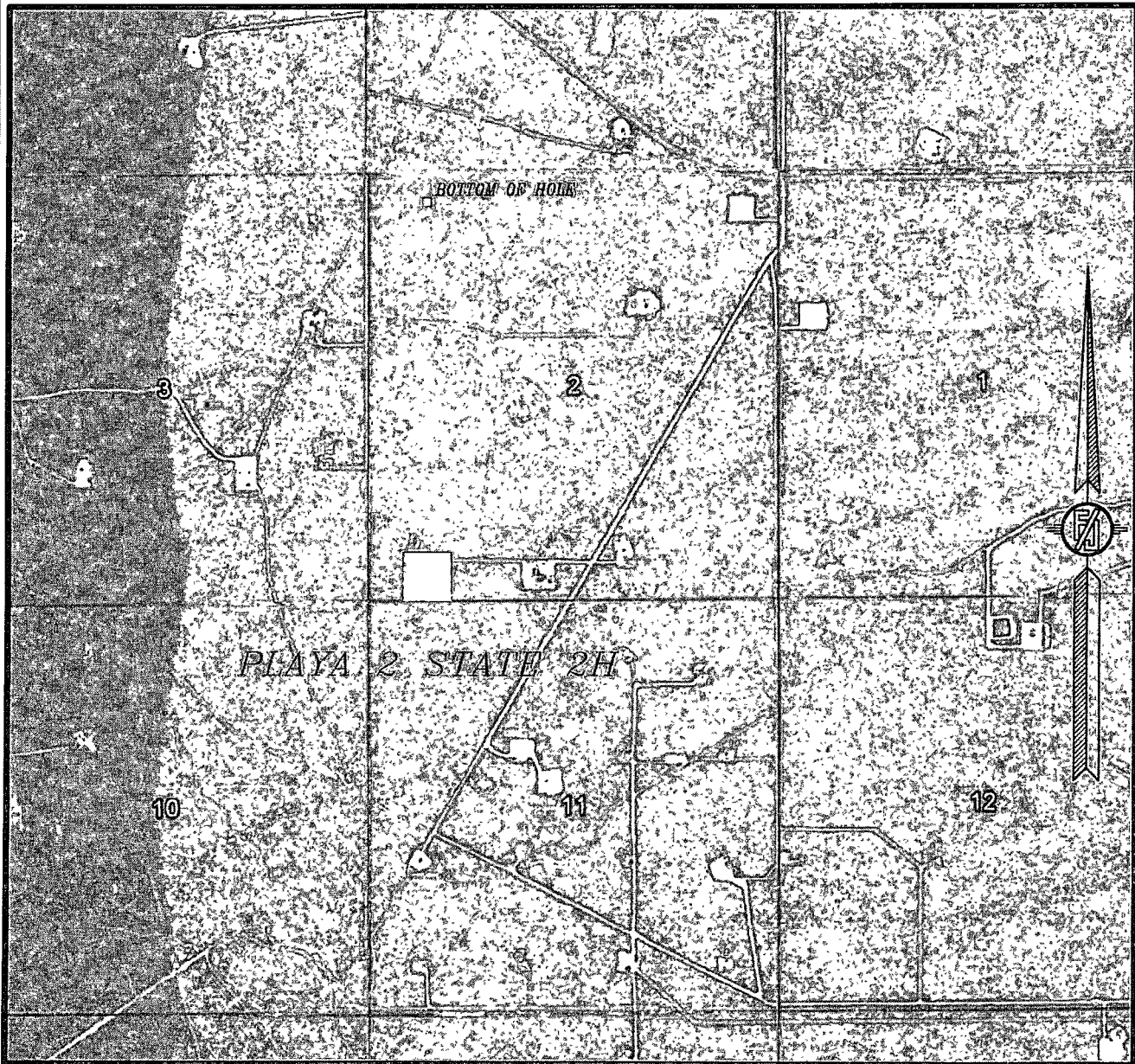
LOCATED 330 FT. FROM THE SOUTH LINE  
AND 760 FT. FROM THE WEST LINE OF  
SECTION 2, TOWNSHIP 19 SOUTH,  
RANGE 34 EAST, N.M.P.M.  
LEA COUNTY, STATE OF NEW MEXICO

APRIL 10, 2012

SURVEY NO. 874

MADRON SURVEYING, INC. 301 SOUTH CANAL (575) 234-3341 CARLSBAD, NEW MEXICO

SECTION 2, TOWNSHIP 19 SOUTH, RANGE 34 EAST, N.M.P.M.  
LEA COUNTY, STATE OF NEW MEXICO  
**AERIAL PHOTO**



NOT TO SCALE  
AERIAL PHOTO:  
GOOGLE EARTH  
MARCH 2012

**DEVON ENERGY PRODUCTION COMPANY, L.P.**  
**PLAYA 2 STATE 2H**

LOCATED 330 FT. FROM THE SOUTH LINE  
AND 760 FT. FROM THE WEST LINE OF  
SECTION 2, TOWNSHIP 19 SOUTH,  
RANGE 34 EAST, N.M.P.M.  
LEA COUNTY, STATE OF NEW MEXICO

APRIL 10, 2012

SURVEY NO. 874

MADRON SURVEYING, INC. 301 SOUTH CANAL (575) 234-3341 CARLSBAD, NEW MEXICO