

## DISTRICT I

1825 N. French Dr., Hobbs, NM 88240

## DISTRICT II

P.O. Drawer DD, Artesia, NM 88211-0719

## DISTRICT III

1000 Rio Brazos Rd., Aztec, NM 87410

## DISTRICT IV

2040 South Pacheco, Santa Fe, NM 87505

## State of New Mexico

Minerals &amp; Natural Resources Department

RECEIVED

JAN 11 2010

HOBBSCOCD

OIL CONSERVATION DIVISION

2040 South Pacheco

Santa Fe, NM 87505

Form C-102

Revised August 15, 2002

Submit to Appropriate District Office

State Lease - 4 Copies

Fee Lease - 3 Copies

HOBBSCOCD

FEB 13 2012

☐ AMENDED REPORT

## WELL LOCATION AND ACREAGE DEDICATION PLAT

RECEIVED

API Number 30-025-39640	Pool Code 62180	Pool Name VACUUM; GRAYBURG - SAN ANDRES
Property Code 31172	Property Name EAST VACUUM GBSA UNIT	Well Number -500E
OGRID No. 217817	Operator Name CONOCOPHILLIPS	Elevation 3945'

## Surface Location

UL or lot No.	Section	Township	Range	Lot Idn	Feet from the	North/South line	Feet from the	East/West line	County
K	33	17-S	35-E		2335	SOUTH	2275	WEST	LEA

## Bottom Hole Location If Different From Surface

UL or lot No.	Section	Township	Range	Lot Idn	Feet from the	North/South line	Feet from the	East/West line	County

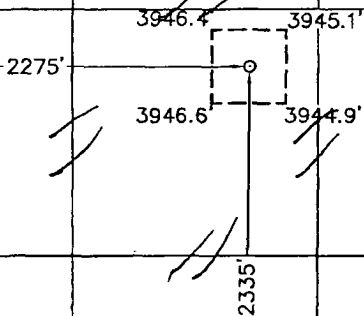
Dedicated Acres 40	Joint or Infill	Consolidation Code	Order No.
-----------------------	-----------------	--------------------	-----------

NO ALLOWABLE WILL BE ASSIGNED TO THIS COMPLETION UNTIL ALL INTERESTS HAVE BEEN CONSOLIDATED OR A NON-STANDARD UNIT HAS BEEN APPROVED BY THE DIVISION

## NOTE:

- 1) Plane Coordinates shown hereon are Transverse Mercator Grid and Conform to the "New Mexico Coordinate System", New Mexico East Zone, North American Datum of 1927. Distances shown hereon are mean horizontal surface values.

Plane Coordinate  
X = 767,355.1  
Y = 652,347.2



## OPERATOR CERTIFICATION

I hereby certify the the information contained herein is true and complete to the best of my knowledge and belief

Signature (1)  
Shonda Rogers  
Printed Name  
Shonda Rogers  
Title  
Staff Rec Tech  
Date  
2-9-12

## SURVEYOR CERTIFICATION

I hereby certify that the well location shown on this plat was plotted from field notes of actual surveys made by me or under my supervision and that the same is true and correct to the best of my belief

November 2, 2009

Date Surveyed

Signature &amp; Seal of Professional Surveyor

W.O. Num 2009-0745

Certificate No. MACON McDONALD 12185

APR 30 2012