

Submit 1 Copy To Appropriate District

Office

District I - (575) 393-6161
1625 N. French Dr., Hobbs, NM 88240

District II - (575) 748-1283

811 S. First St., Artesia, NM 88210
District III - (505) 334-6178

1000 Rio Brazos Rd., Aztec, NM 87410

District IV - (505) 476-3460

1220 S. St Francis Dr., Santa Fe, NM 87505

State of New Mexico

Energy, Minerals and Natural Resources

Form C-103

Revised August 1, 2011

HOBBS OGD

MAY 04 2012

OIL CONSERVATION DIVISION

1220 South St. Francis Dr.

Santa Fe, NM 87505

RECEIVED

WELL API NO.

30-025-40499

5. Indicate Type of Lease

STATE ☐ FEE ☒

6. State Oil & Gas Lease No.

7. Lease Name or Unit Agreement Name

NORTHEAST DRINKARD UNIT <22503>

8. Well Number 282

9. OGRID Number 873

10. Pool name or Wildcat

EUNICE;BLI-TU-DR, NORTH<22900>

SUNDRY NOTICES AND REPORTS ON WELLS

(DO NOT USE THIS FORM FOR PROPOSALS TO DRILL OR TO DEEPEN OR PLUG BACK TO A DIFFERENT RESERVOIR. USE "APPLICATION FOR PERMIT" (FORM C-101) FOR SUCH PROPOSALS.)

1. Type of Well: Oil Well ☒ Gas Well ☐ Other ☐ Oil with Gas ☒

2. Name of Operator

APACHE CORPORATION

3. Address of Operator

303 VETERANS AIRPARK LANE, STE 3000

MIDLAND, TX 79705

4. Well Location

Unit Letter E: 3850 feet from the SOUTH line and 660 feet from the WEST Line

Section 3 Township 21S Range 37E NMPM County LEA

11. Elevation (Show whether DR, RKB, RT, GR, etc.)

3443'

12. Check Appropriate Box to Indicate Nature of Notice, Report or Other Data

NOTICE OF INTENTION TO:

PERFORM REMEDIAL WORK ☐ PLUG AND ABANDON ☐

TEMPORARILY ABANDON ☐ CHANGE PLANS ☐

PULL OR ALTER CASING ☐ MULTIPLE COMPL ☐

DOWNHOLE COMMINGLE ☐

OTHER: CHANGE PROPOSED DEPTH ☒

SUBSEQUENT REPORT OF:

REMEDIAL WORK ☐ ALTERING CASING ☐

COMMENCE DRILLING OPNS. ☐ P AND A ☐

CASING/CEMENT JOB ☐

OTHER: ☐

13. Describe proposed or completed operations. (Clearly state all pertinent details, and give pertinent dates, including estimated date of starting any proposed work). SEE RULE 19.15.7.14 NMAC. For Multiple Completions: Attach wellbore diagram of proposed completion or recompletion.

05/03/2012: APACHE CORP REQUEST: To change the proposed depth of the NEDU #282 (30-025-40499) from 8050' to 7150'.

UL: E Sec.: 3 T-21-S R37E

Spud Date:

Rig Release Date:

I hereby certify that the information above is true and complete to the best of my knowledge and belief.

SIGNATURE

Susan Blakemore

TITLE

DRILLING TECH

DATE MAY 3, 2012

Type or print name SUSAN BLAKEMORE

E-mail address: susan.blakemore@apachecorp.com

PHONE: 432-818-1966

For State Use Only

APPROVED BY:

[Signature]

TITLE

PERMISSION GRANTOR

DATE

MAY 04 2012

Conditions of Approval (if any):

DISTRICT I
1625 N. French Dr., Hobbs, NM 88240
Phone (575) 393-6191 Fax: (575) 393-0720

DISTRICT II
811 S. First St., Artesia, NM 88210
Phone (575) 748-1253 Fax: (575) 748-0720

DISTRICT III
1000 Rio Brazos Rd., Aztec, NM 87410
Phone (505) 354-6178 Fax: (505) 354-6170

DISTRICT IV
1220 S. St. Francis Dr., Santa Fe, NM 87506
Phone (505) 476-3460 Fax: (505) 476-3462

State of New Mexico
Energy, Minerals and Natural Resources Department

OIL CONSERVATION DIVISION
1220 South St. Francis Dr.
Santa Fe, New Mexico 87505

Form C-102
Revised August 1, 2011

Submit one copy to appropriate
District Office

WELL LOCATION AND ACREAGE DEDICATION PLAT

☒ AMENDED REPORT

API Number 30-025-40499	Pool Code 22900	Pool Name Eunice; BLI-TU-DR North
Property Code 22503	Property Name NEDU	Well Number 282
OGRID No. 873	Operator Name APACHE CORPORATION	Elevation 3443'

Surface Location

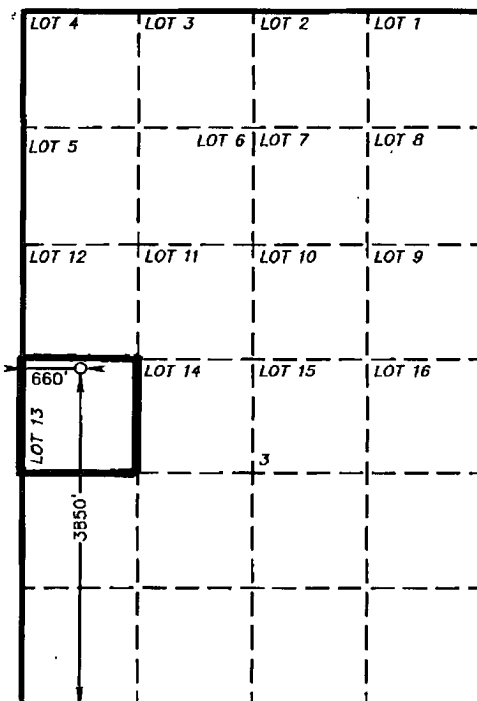
UL or lot No.	Section	Township	Range	Lot Idn	Feet from the	North/South line	Feet from the	East/West line	County
LOT 13	3	21 S	37 E		3850	SOUTH	660	WEST	LEA

Bottom Hole Location If Different From Surface

UL or lot No.	Section	Township	Range	Lot Idn	Feet from the	North/South line	Feet from the	East/West line	County
Dedicated Acres 40	Joint or Infill	Consolidation Code	Order No.						

NO ALLOWABLE WILL BE ASSIGNED TO THIS COMPLETION UNTIL ALL INTERESTS HAVE BEEN CONSOLIDATED
OR A NON-STANDARD UNIT HAS BEEN APPROVED BY THE DIVISION

SURFACE LOCATION
Lat - N 32°30'40.64"
Long - W 103°09'26.44"
NMSPCE - N 551737.045
E 903853.658
(NAD-83)
Lat - N 32°30'40.21"
Long - W 103°09'24.74"
NMSPCE - N 551676.995
E 862669.874
(NAD-27)



OPERATOR CERTIFICATION

I hereby certify that the information contained herein is true and complete to the best of my knowledge and belief, and that this organization either owns a working interest or unleased mineral interest in the land including the proposed bottom hole location, or has a right to drill this well at this location pursuant to a contract with an owner of such a mineral or working interest, or to a voluntary pooling agreement or a compulsory pooling order heretofore entered by the division.

Susan Blakemore 5/3/2012
Signature Date
Susan Blakemore
Printed Name
Susan.blakemore@apachecorp.com
Email Address

SURVEYOR CERTIFICATION

I hereby certify that the well location shown on this plat was plotted from field notes of actual surveys made by me or under my supervision, and that the same is true and correct to the best of my belief

Gary L. Jones 2012
Date Surveyed
Signature Seal of Professional Surveyor
Professional Surveyor
26292

Certificate No. Gary L. Jones 7977

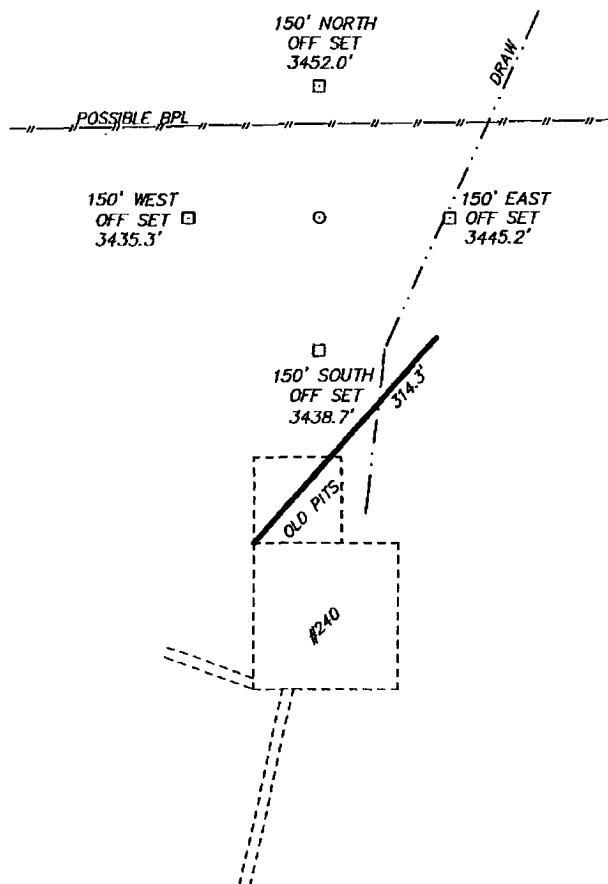
Basin Surveys 26292

SECTION 2, TOWNSHIP 21 SOUTH, RANGE 37 EAST, N.M.P.M.,
LEA COUNTY, NEW MEXICO.

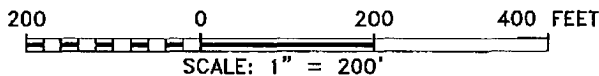
APACHE CORPORATION
NEDU #282
ELEV. - 3443'

Lat - N 32°30'40.64"
Long - W 103°09'26.44"
NMSPCE- N 551737.045
E 903853.658
(NAD-83)

Lat - N 32°30'40.21"
Long - W 103°09'24.74"
NMSPCE- N 551676.995
E 862669.874
(NAD-27)



N



Directions to Location:

FROM MILE MARKER 5 OF STATE HWY 207, GO WEST
0.6 MILES TO LEASE ROAD, ON LEASE ROAD GO
NORTH 0.2 MILES TO A "Y", TAKE LEFT FORK AND
GO 0.4 MILES TURNING NORTH 0.1 MILES TO
PROPOSED LEASE ROAD.

APACHE CORPORATION

REF: NEDU #5 / WELL PAD TOPO

THE NEDU #282 LOCATED 3850'

FROM THE SOUTH LINE AND 660' FROM THE WEST LINE OF

SECTION 2, TOWNSHIP 21 SOUTH, RANGE 37 EAST,

N.M.P.M., LEA COUNTY, NEW MEXICO.

BASIN SURVEYS P.O. BOX 1786-HOBBS, NEW MEXICO

W.O. Number: 26292

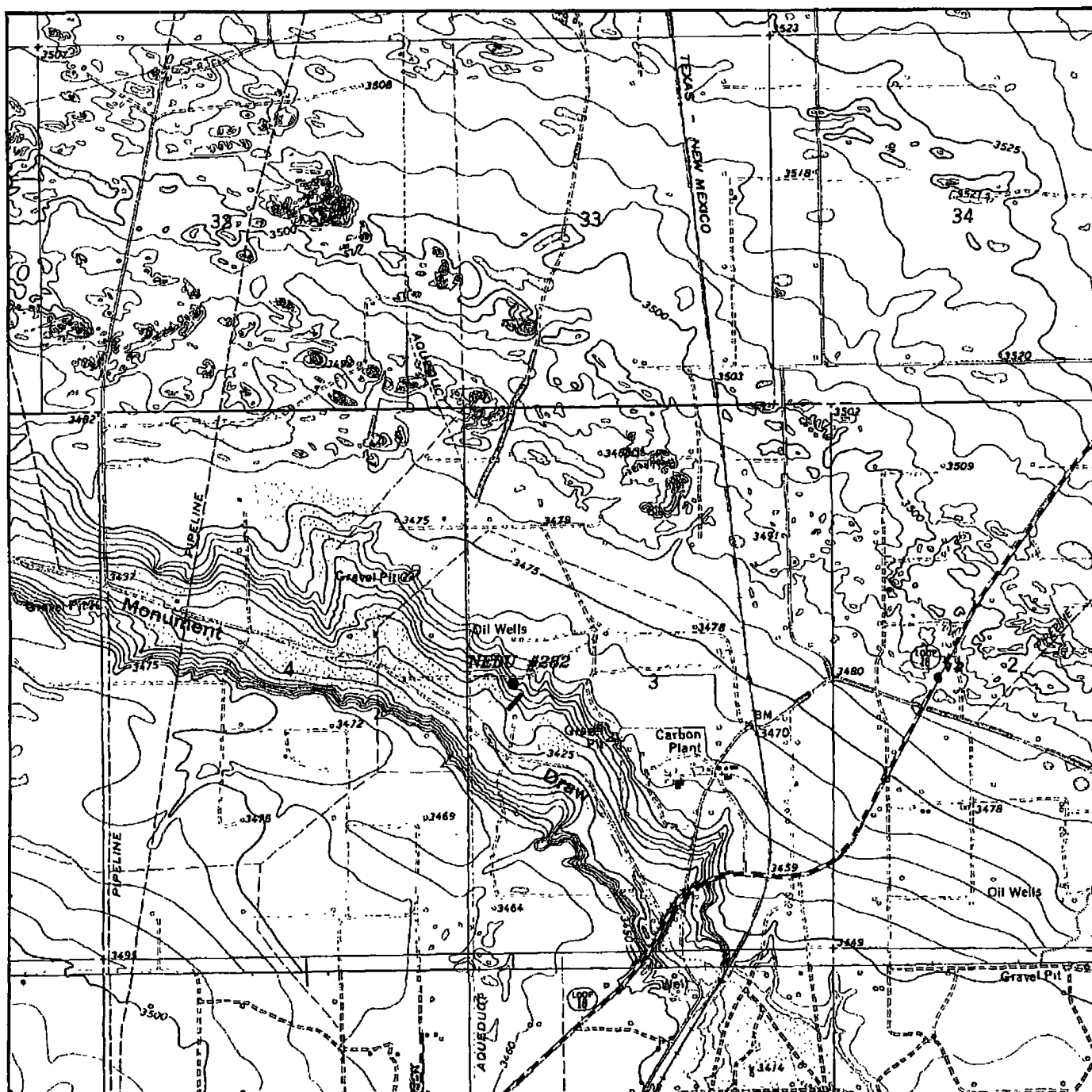
Drawn By: J. SMALL

Date: 03-15-2012

Disk: JMS 26292

Survey Date: 02-29-2012

Sheet 1 of 1 Sheets



NEDU #282

Located 3850' FSL and 660' FWL

Section 3, Township 21 South, Range 37 East,
N.M.P.M., Lea County, New Mexico.

**basin
surveys**

focused on excellence
in the oilfield

P.O. Box 1786
1120 N. West County Rd.
Hobbs, New Mexico 88241
(575) 393-7316 - Office
(575) 392-2206 - Fax
basinsurveys.com

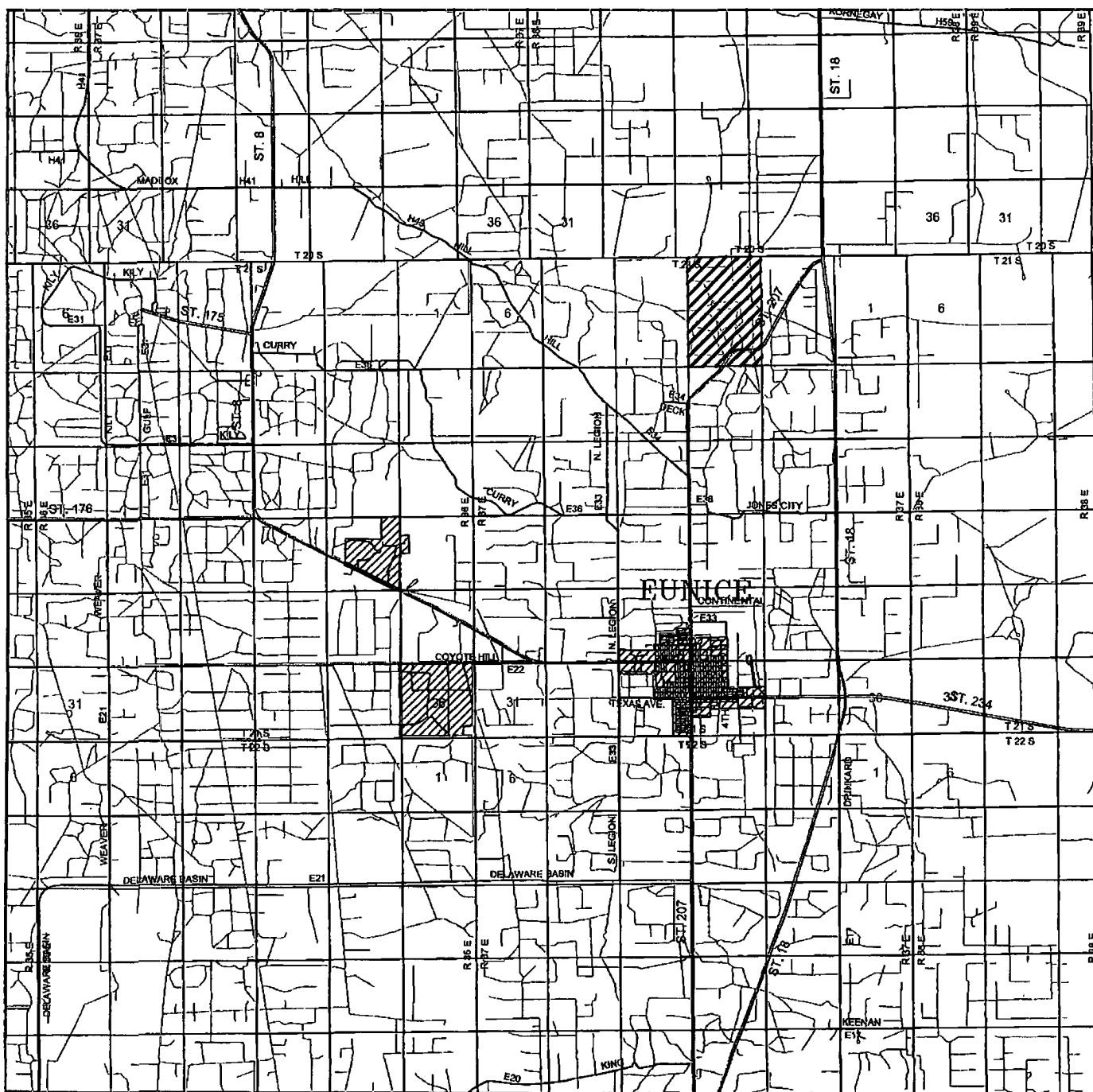
W.O. Number: JMS 26292

Survey Date: 02-29-2012

Scale: 1" = 2000'

Date: 03-15-2012

**APACHE
CORPORATION**



NEDU #282

Located 3850' FSL and 660' FWL

Section 3, Township 21 South, Range 37 East,
N.M.P.M., Lea County, New Mexico.

basin
surveys

focused on excellence
in the oilfield

P.O. Box 1786
1120 N. West County Rd.
Hobbs, New Mexico 88241
(575) 393-7316 - Office
(575) 392-2206 - Fax
basinsurveys.com

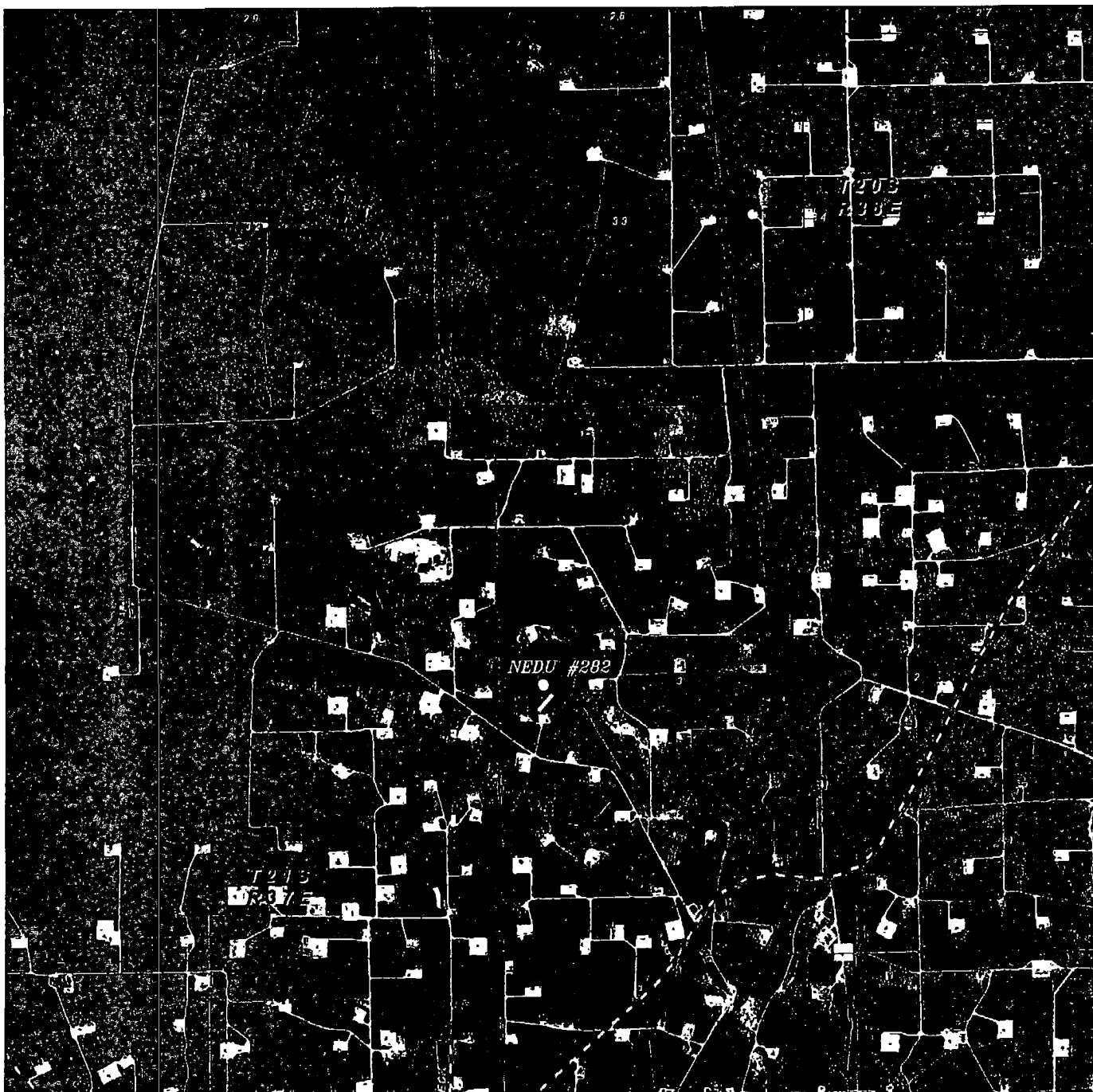
W.O. Number: JMS 26292

Survey Date: 02-29-2012

Scale: 1" = 2 Miles

Date: 03-15-2012

APACHE
CORPORATION



NEDU #282

Located 3850' FSL and 660' FWL

Section 3, Township 21 South, Range 37 East,
N.M.P.M., Lea County, New Mexico.

basin
surveys
focused on excellence
in the oilfield

P.O. Box 1786
1120 N. West County Rd.
Hobbs, New Mexico 88241
(575) 393-7316 - Office
(575) 392-2206 - Fax
basinsurveys.com

W.O. Number: JMS 26292

Scale: 1" = 2000'

YELLOW TINT - USA LAND
BLUE TINT - STATE LAND
NATURAL COLOR - FEE LAND

APACHE
CORPORATION