

District I
1625 N. French Dr., Hobbs, NM 88240
District II
1301 W. Grand Avenue, Artesia, NM 88210
District III
1000 Rio Brazos Rd., Aztec, NM 87410
District IV
1220 S. St. Francis Dr., Santa Fe, NM 87505

State of New Mexico
Energy, Minerals & Natural Resources Department
OIL CONSERVATION DIVISION
1220 South St. Francis Dr.
Santa Fe, NM 87505

Form C-402
Revised October 12, 2005
Submit to Appropriate District Office
State Lease- 4 Copies
Fee Lease- 3 Copies

APR 26 2012

☐ AMENDED REPORT

WELL LOCATION AND ACREAGE DEDICATION PLAN

API Number 30-025- 40257	Pool Code 13160	Pool Name Corbin; Bone Spring, South
Property Code	Property Name CHOLLA "18" FED. COM	Well Number 1H
OCRID No. 7377	Operator Name EOG RESOURCES, INC.	Elevation 3859.7'

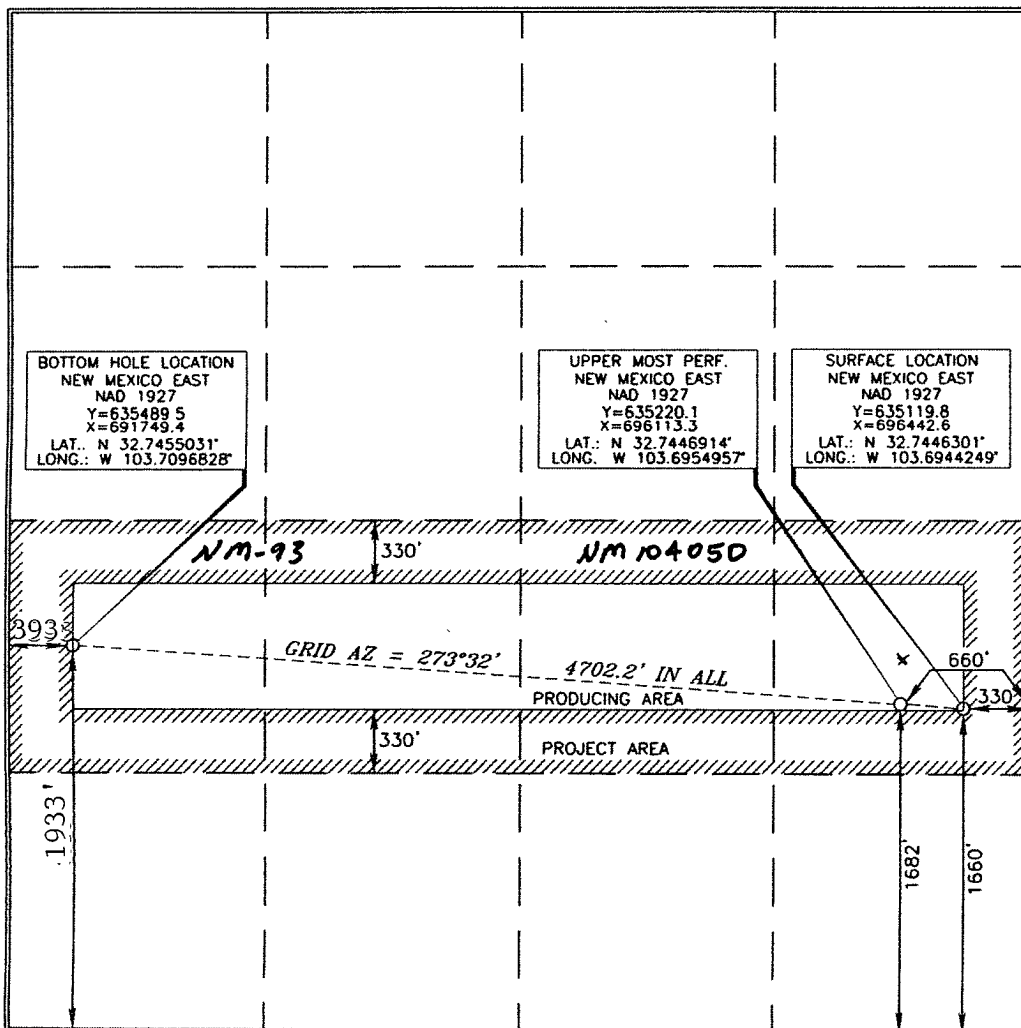
Surface Location

UL or lot no.	Section	Township	Range	Lot Idn	Feet from the	North/South line	Feet from the	East/West line	County
I	18	18 SOUTH	33 EAST, N.M.P.M.		1660'	SOUTH	330'	EAST	LEA

Bottom Hole Location If Different From Surface

UL or lot no.	Section	Township	Range	Lot Idn	Feet from the	North/South line	Feet from the	East/West line	County
L	18	18 SOUTH	33 EAST, N.M.P.M.		1933	SOUTH	393	WEST	LEA
Dedicated Acres 160	Joint or Infill	Consolidation Code	Order No.	1934	4968	E			

No allowable will be assigned to this completion until all interests have been consolidated or a non-standard unit has been approved by the division.



OPERATOR CERTIFICATION

I hereby certify that the information contained herein is true and complete to the best of my knowledge and belief, and that this organization either owns a working interest or unleased mineral interest in the land including the proposed bottom hole location or has a right to drill this well at this location pursuant to a contract with an owner of such a mineral or working interest, or to a voluntary pooling agreement or a compulsory pooling order heretofore entered by the division.

Signature: Don D. Mott Date: 3/31/11

Printed Name: Donny G. Glanton

SURVEYOR CERTIFICATION

I hereby certify that the well location shown on this plat was plotted from field notes and actual surveys made by me or under my supervision and that the same is true and correct to the best of my belief.

Date of Survey: MARCH 21, 2011

Signature and Seal of Professional Surveyor:

Signature: Terry Glanton Date: 3/31/2011
Certificate Number: 15079

WO# 110321WL (XA)

MAY 08 2012